

# Using the Medicare Enrollment File for the DA 2010 Estimates

Kirsten West  
Population Division, U.S. Census Bureau

Prepared for the Applied Demography Conference  
San Antonio, TX  
January 8-10, 2012

*This presentation is released to inform interested parties of ongoing research and to encourage discussion of work in progress. Any views expressed on statistical, methodological, technical, or operational issues are those of the author and not necessarily those of the U.S. Census Bureau.*

# Outline

- The population aged 65 years over
- The Medicare enrollment file
- Issues with the administrative records
- Assignment of race
- Corrections for underenrollment
- Assessment

# Introduction

- Two DA Estimates Subgroups:
  - Because the birth registration system in the United States did not include all states until 1933, the cohort component approach cannot be used to estimate the early cohorts.
  - Estimates for ages 65 and over are based on aggregate Medicare enrollment and estimates of those not enrolled.

# Methodological Challenges

- How to:
  - exclude records.
  - distribute the Medicare database by race.
  - account for people who will delay enrollment past the date of eligibility.
  - account for the people who will never enroll.

# Excluded Records

- We exclude:
  - those not residing in the United States.
  - those who qualify for Medicare, but are not aged 65 or older as of April 1, 2010.
  - those who are reported as age 115 or older.
  - those with no reported date of birth.
  - those with a date of death before April 1, 2010.
  - duplicate records.

# Race

- Because Hispanic origin is considered a race on the Medicare file, we need to distribute these cases to the DA race categories of Black and non-Black.
- To achieve that outcome, we merged the Medicare records and the Census Bureau's person-level characteristics file.
- The merge allowed us to use either the Census 2000 or a model to obtain race information for these Medicare records.

# Race

- Medicare records with a race category of “Other” and “Unknown” were distributed in a similar manner as Hispanics.
- A total of about 1.6 million records (about 4.25 percent of all records) were distributed.
- The category Black increased by about 46,000 increasing the percentage of all Black records from 8.25 percent to 8.35 percent.

# Underenrollment

- We used two data sources to estimate underenrollment:
  - The Medicare data.
  - The Current Population Survey (CPS) 2002-2008.
- We used two approaches to correct for never enrolled:
  - Set value based on 75+ retired population.
  - Set values for age groups 65-69, 70-74, 75+.
- We developed ranges around the estimates to reflect the uncertainty in assumptions.



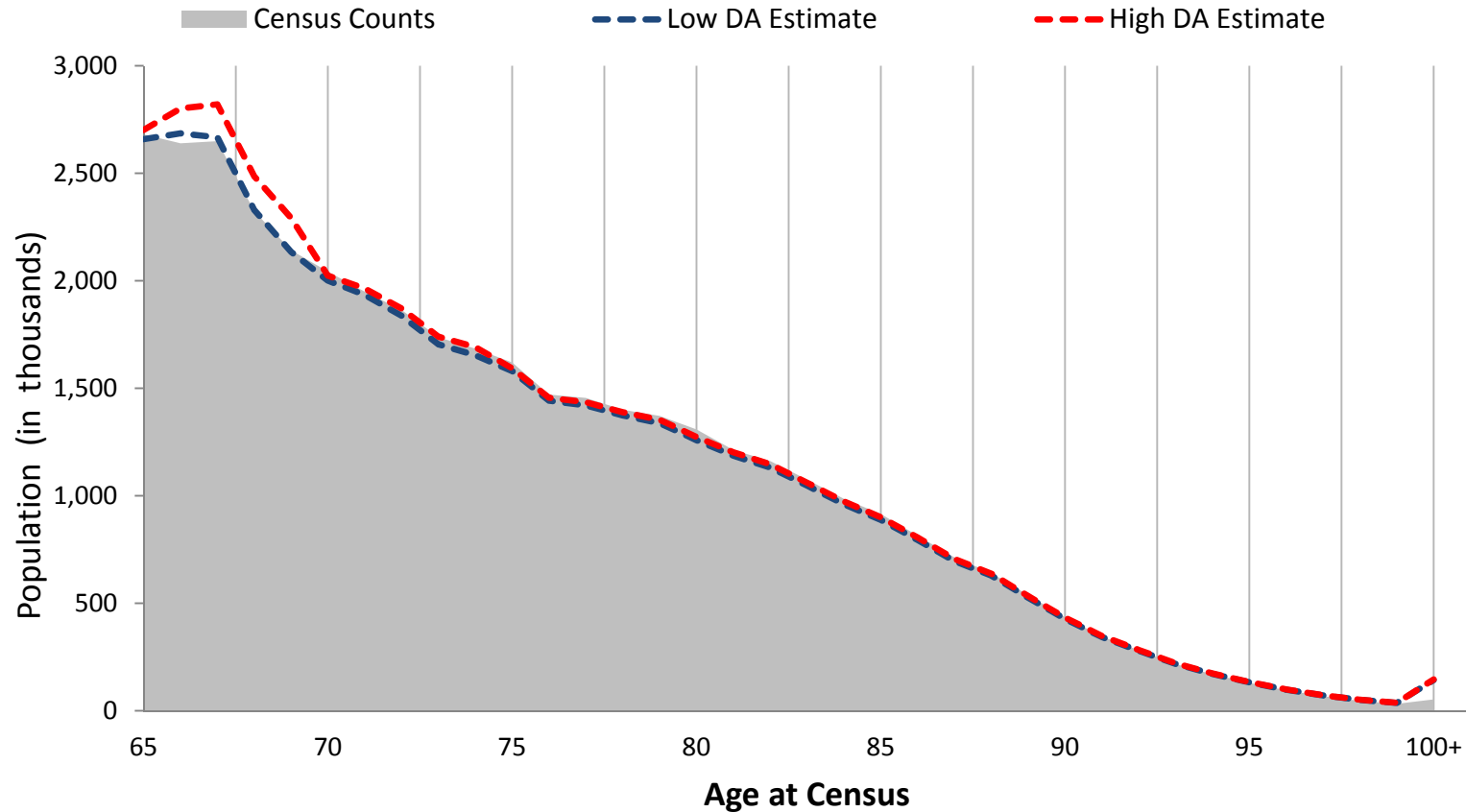
# Three Medicare Series

- Low
  - Lower bound of estimates using correction factors from the Medicare file and the CPS (2002-2008) for retired population.
- Middle
  - Estimates developed using correction factors from the Medicare file and the CPS (2002-2008) for retired population.
- High
  - Upper bound of the estimates using one correction factor derived from the CPS (2002-2008) for total population.

# Implementation Results

DA Estimates Series	Estimated Population Aged 65 and Older on April 1, 2010 by Race and Sex				
	Total	Black Male	Black Female	Non-Black Male	Non-Black Female
Low DA Series: Method 1 lower bound estimate (in thousands)					
Estimate	39,814	1,367	2,065	15,903	20,479
Low Middle, Middle and High Middle DA Series: Method 1 estimate (in thousands)					
Estimate	39,957	1,388	2,088	15,953	20,528
High DA Series: Method 2 upper bound estimate (in thousands)					
Estimate	40,876	1,439	2,151	16,379	20,907

# Census Population Counts and Demographic Analysis Estimates of the Population Aged 65-100+: 2010



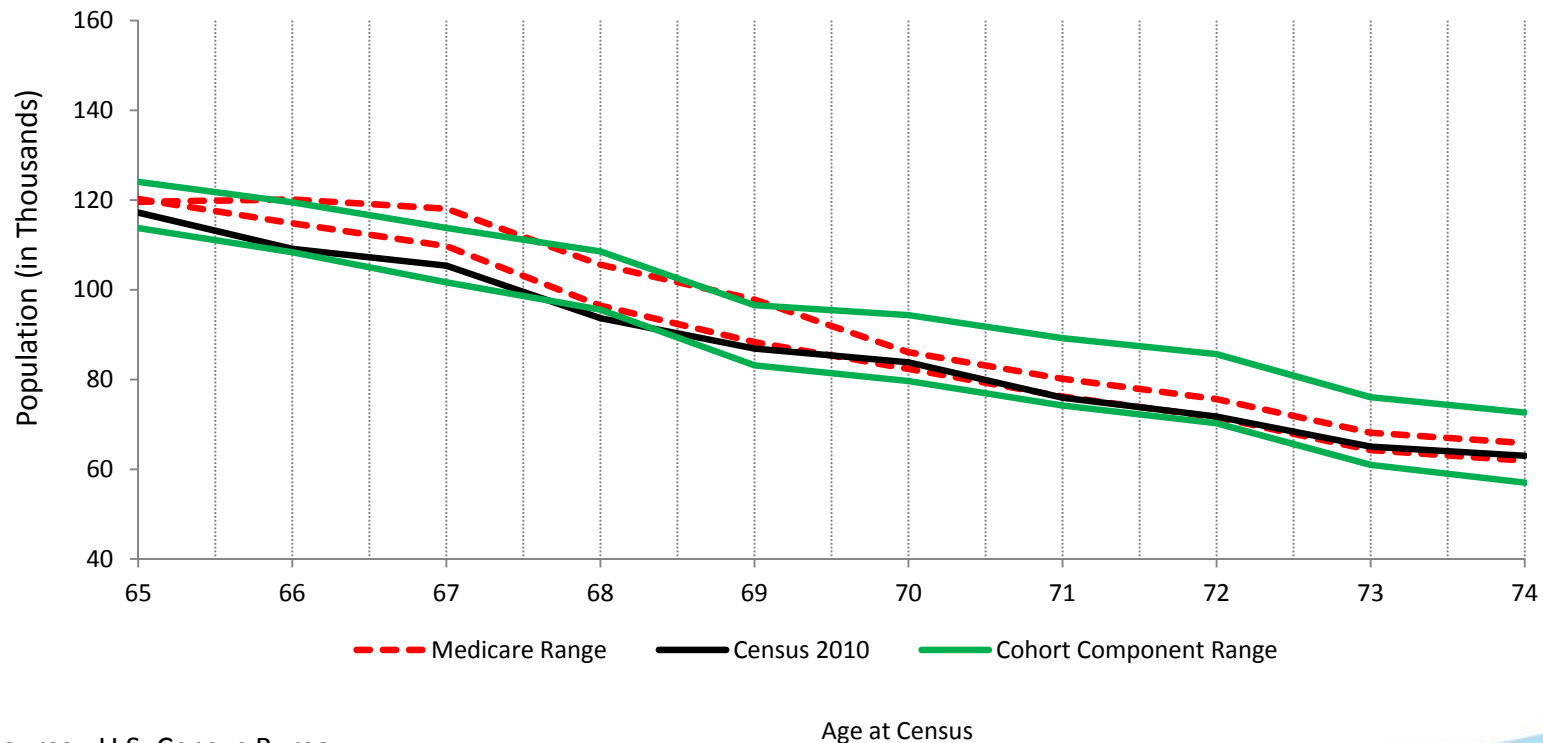
Source: U.S. Census Bureau

# Assessment

- In 2010, it is possible to produce DA estimates for the population aged 65 to 74 using the cohort-component approach.
- This allows us to assess the consistency between the Medicare- and the component-based estimates for these limited ages for the Black and non-Black populations by sex.
- We can compare both sets to the Census 2010 results.

# Comparison of the Census 2010, the Cohort-Component and the Medicare-Based Estimates: Black Males

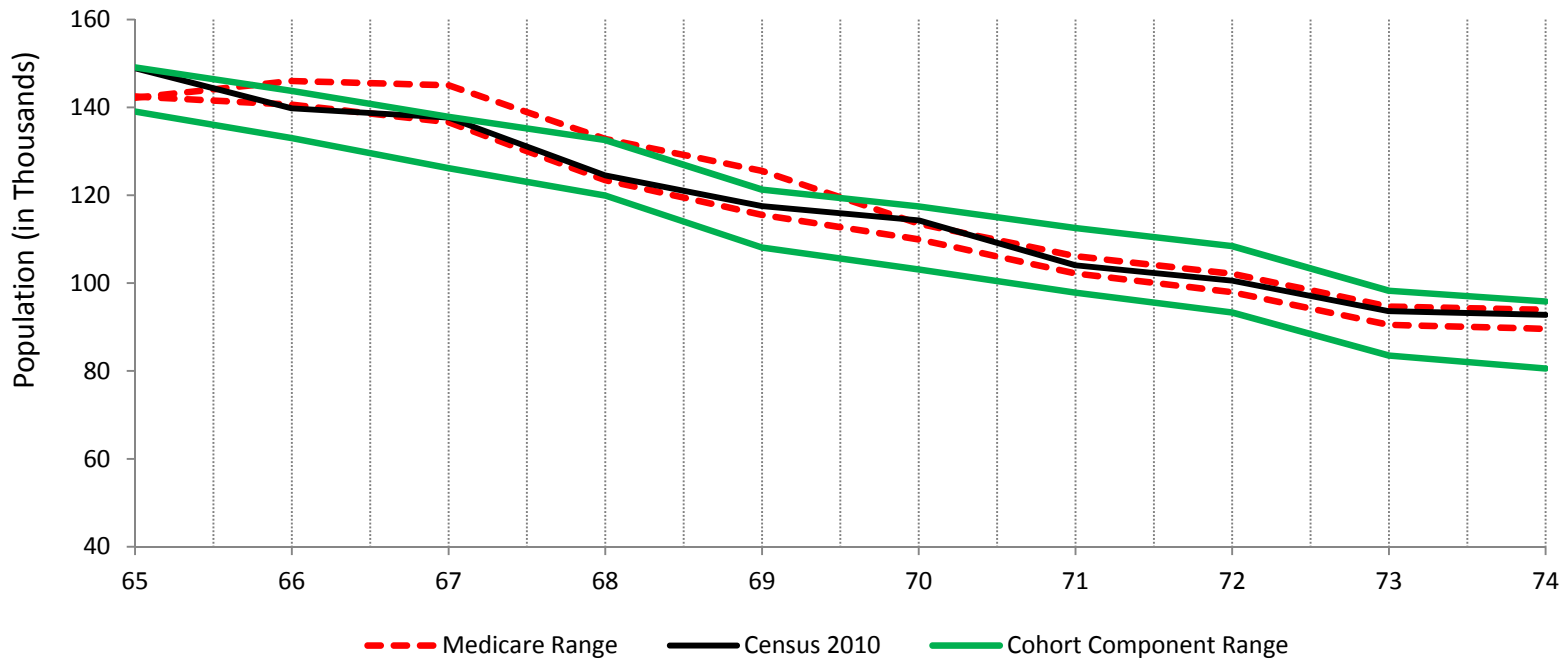
Source	65	66	67	68	69	70	71	72	73	74
Medicare	Below	Below	Below	Below	Below	Within	Below	Within	Within	Within
Component	Within	Within	Within	Below	Within	Within	Within	Within	Within	Within



Source: U.S. Census Bureau

# Comparison of the Census 2010, the Cohort-Component and the Medicare-Based Estimates: Black Females

Source	65	66	67	68	69	70	71	72	73	74
Medicare	Above	Below	Within	Within	Within	Above	Within	Within	Within	Within
Component	Within	Within	Within	Within	Within	Within	Within	Within	Within	Within

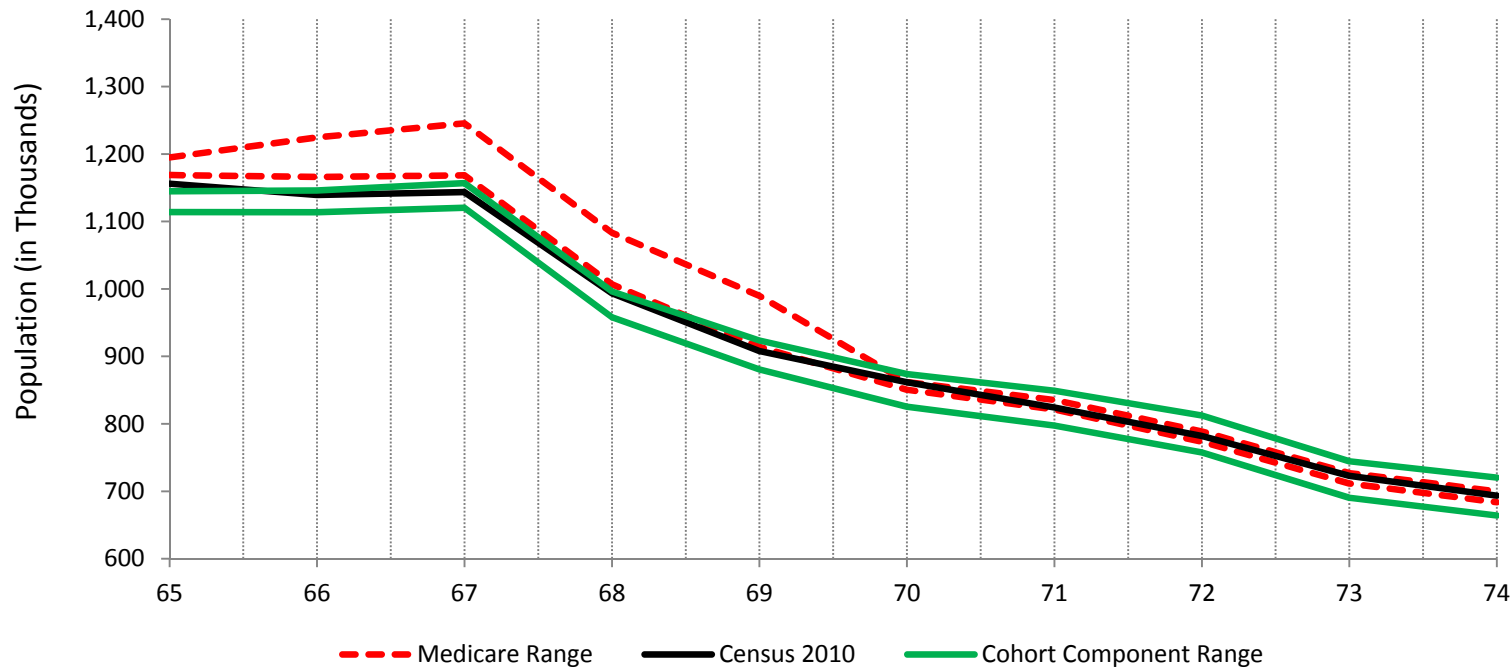


Source: U.S. Census Bureau

Age at Census

# Comparison of the Census 2010, the Cohort-Component and the Medicare-Based Estimates: Non-Black Males

Source	65	66	67	68	69	70	71	72	73	74
Medicare	Below	Below	Below	Below	Below	Within	Within	Within	Within	Within
Component	Above	Within	Within	Within	Within	Within	Within	Within	Within	Within

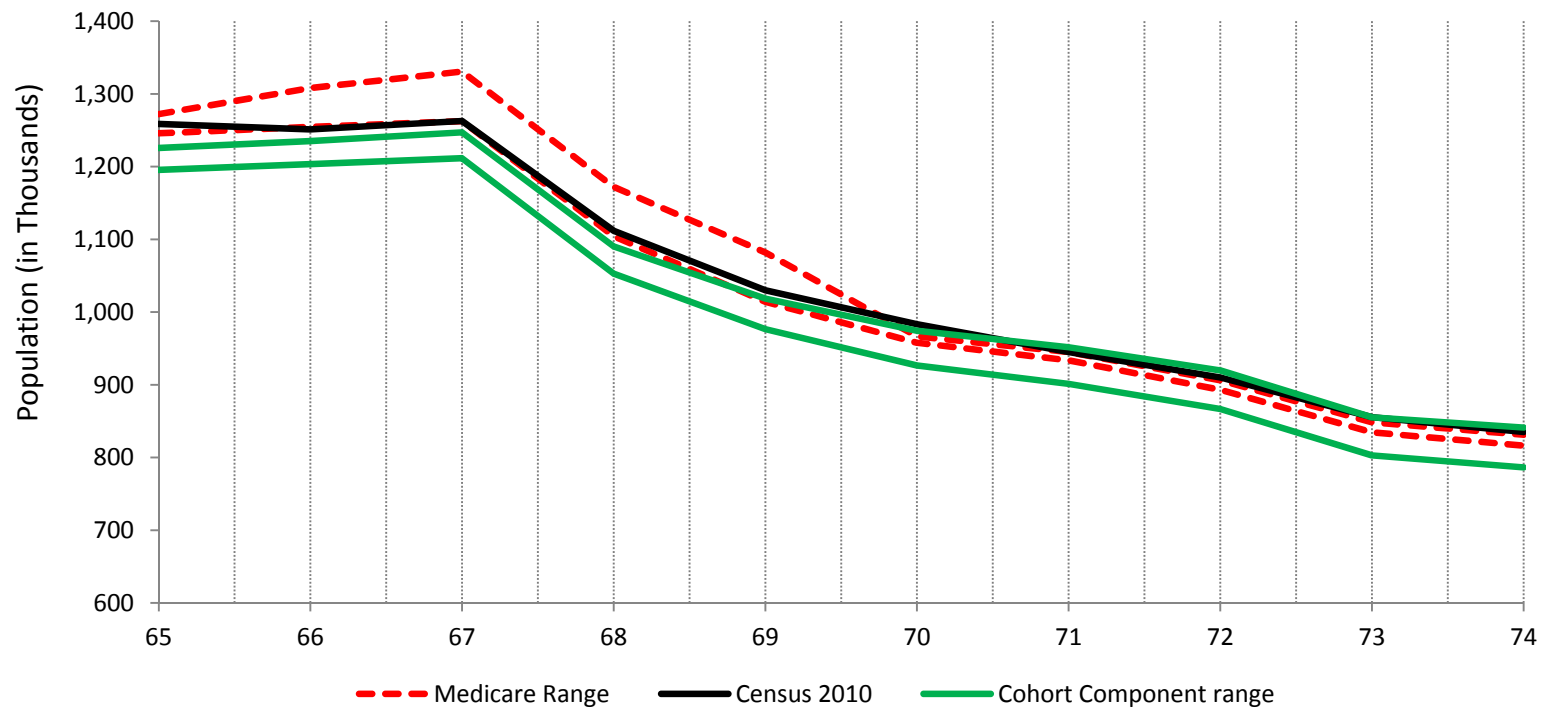


Source: U.S. Census Bureau

Age at Census

# Comparison of the Census 2010, the Cohort-Component and the Medicare-Based Estimates: Non-Black Females

Source	65	66	67	68	69	70	71	72	73	74
Medicare	Within	Below	Within	Within	Within	Above	Above	Above	Above	Above
Component	Above	Above	Above	Above	Above	Above	Within	Within	Above	Within



Source: U.S. Census Bureau

Age at Census



# Conclusion

Age	Black male		Black females		Non-Black males		Non-Black females	
	Medicare	Cohort Component	Medicare	Cohort Component	Medicare	Cohort Component	Medicare	Cohort Component
65	<b>Below</b>	<b>Within</b>	<b>Above</b>	<b>Within</b>	<b>Below</b>	<b>Above</b>	<b>Within</b>	<b>Above</b>
66	<b>Below</b>	<b>Within</b>	<b>Below</b>	<b>Within</b>	<b>Below</b>	<b>Within</b>	<b>Below</b>	<b>Above</b>
67	<b>Below</b>	<b>Within</b>	<b>Within</b>	<b>Within</b>	<b>Below</b>	<b>Within</b>	<b>Within</b>	<b>Above</b>
68	<b>Below</b>	<b>Below</b>	<b>Within</b>	<b>Within</b>	<b>Below</b>	<b>Within</b>	<b>Within</b>	<b>Above</b>
69	<b>Below</b>	<b>Within</b>	<b>Within</b>	<b>Within</b>	<b>Below</b>	<b>Within</b>	<b>Within</b>	<b>Above</b>
70	<b>Within</b>	<b>Within</b>	<b>Above</b>	<b>Within</b>	<b>Within</b>	<b>Within</b>	<b>Above</b>	<b>Above</b>
71	<b>Below</b>	<b>Within</b>	<b>Within</b>	<b>Within</b>	<b>Within</b>	<b>Within</b>	<b>Above</b>	<b>Within</b>
72	<b>Within</b>	<b>Within</b>	<b>Within</b>	<b>Within</b>	<b>Within</b>	<b>Within</b>	<b>Above</b>	<b>Within</b>
73	<b>Within</b>	<b>Within</b>	<b>Within</b>	<b>Within</b>	<b>Within</b>	<b>Within</b>	<b>Above</b>	<b>Above</b>
74	<b>Within</b>	<b>Within</b>	<b>Within</b>	<b>Within</b>	<b>Within</b>	<b>Within</b>	<b>Above</b>	<b>Within</b>

# Contact Information

Kirsten West

[Kirsten.K.West@census.gov](mailto:Kirsten.K.West@census.gov)

301-763-6131