

What Demographic Analysis Tells Us About Count of Children in the 2010 Census

by

William P. O'Hare

American Statistical Association/National Science
Foundation/Census Research Fellow

The Undercount of Children in the Census

- **Children have had high net undercount rates historically in the United States**
- **Children have had high net undercount rates in other countries**
- **There is very little systematic scientific evidence about this problem**

How Do We Know Who Is Missed In The Census?

- **Demographic Analysis (DA)**
 - **Compares census results to an independent estimate based largely on birth and death certificate data**
- **Dual-Systems Estimates (DSE)**
 - **Compares census results to a second survey conducted in selected areas done with more resources**

What is Demographic Analysis?

- Estimates for population under age 65 are based on historical components of change for cohorts

– [births, deaths, immigration, emigration]:

$$P = B - D + I - E$$

- Estimates for those aged 65 and over are based on aggregate Medicare enrollment for the latest available year, and estimates of those not enrolled.

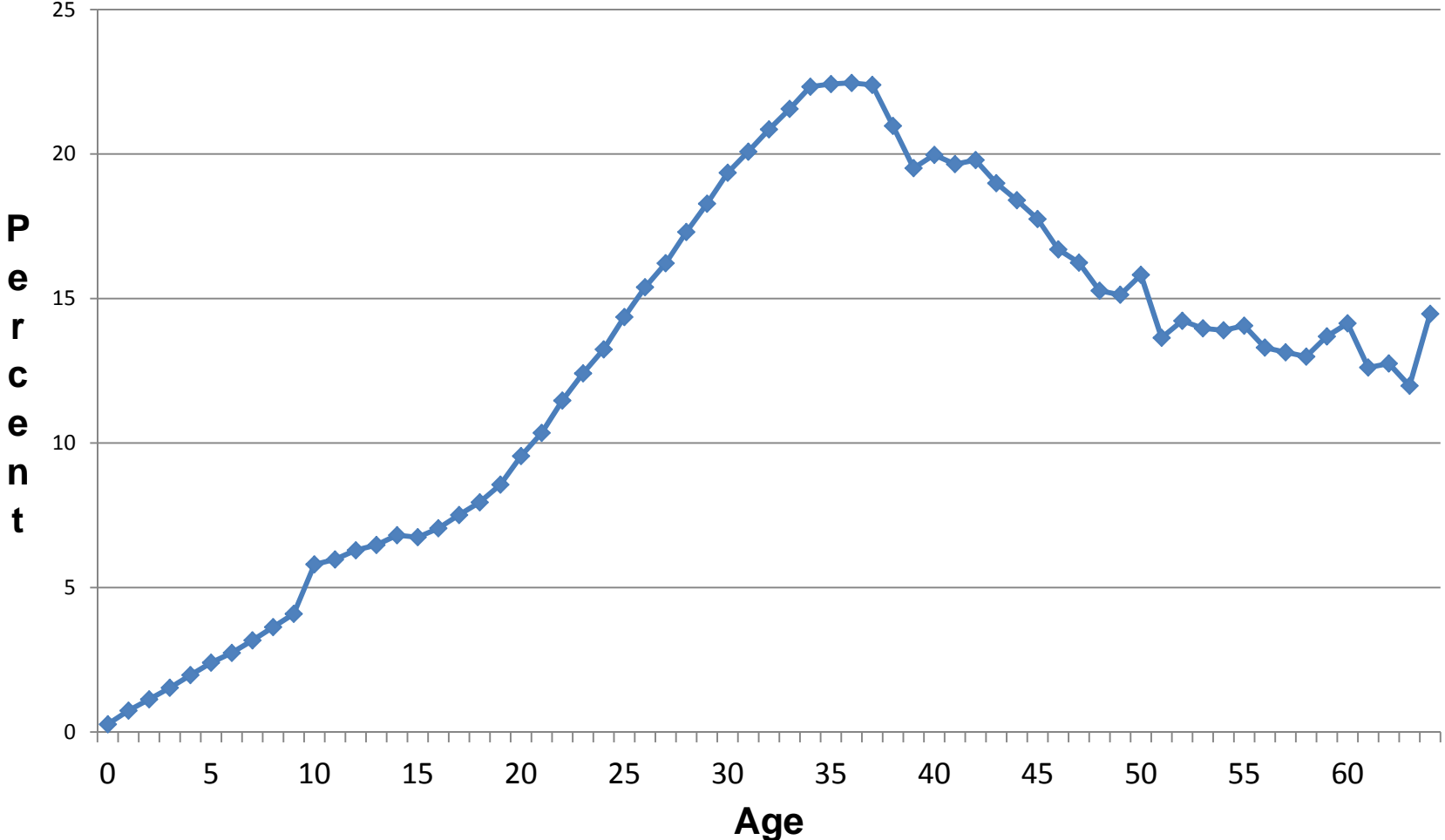
Limitations of Demographic Analysis

- Only available at the national level
- Only net figures are available
- Only Black/non-Black race groups are available (Hispanic children added in 2010)

Strengths of Demographic Analysis

- Long history of use and development
- Straight-forward and transparent
- Underlying data is generally strong
 - Births & deaths
 - Net international migration

Net International Migration as a Percent of DA Middle Series Population Estimate

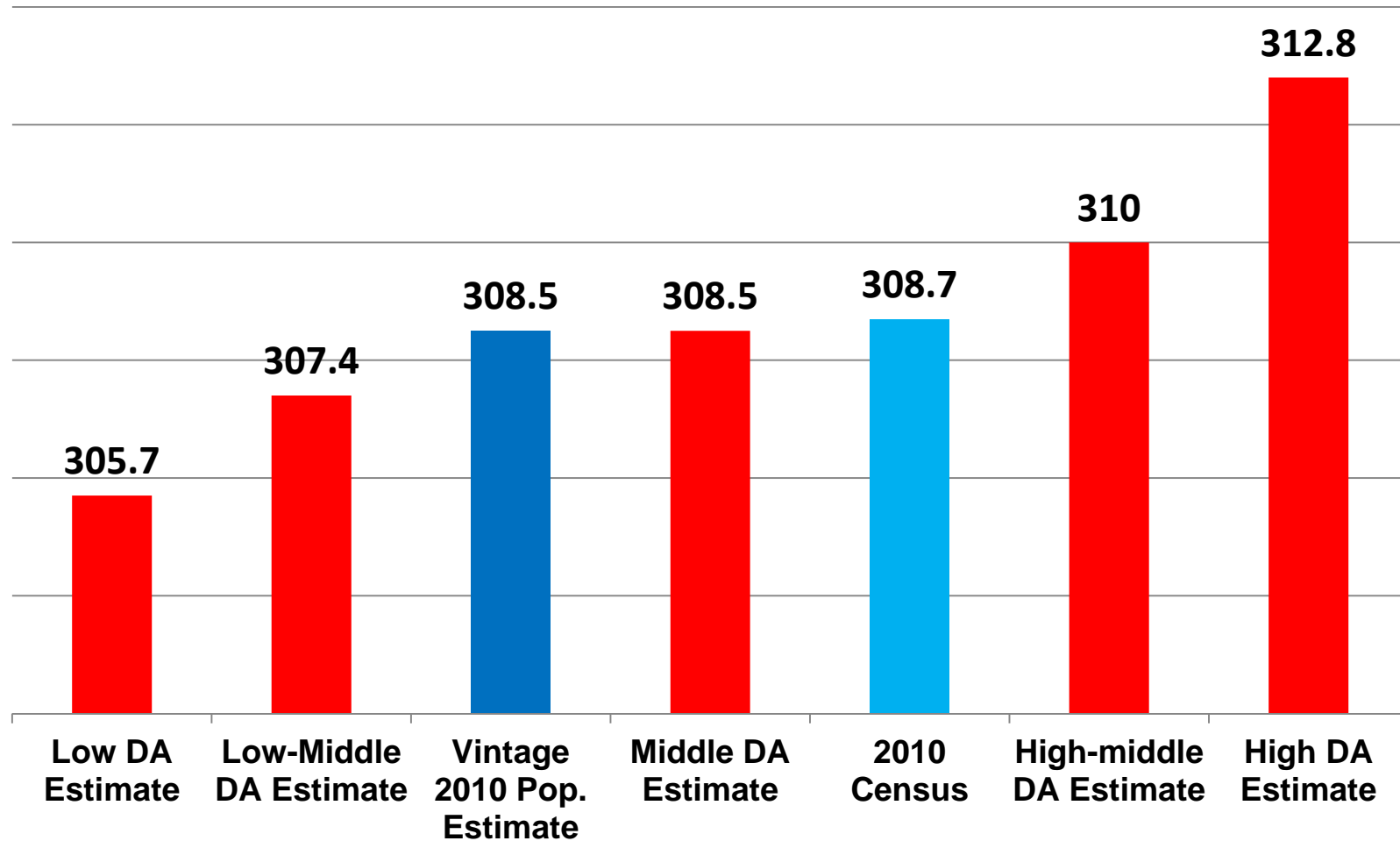


LABELING

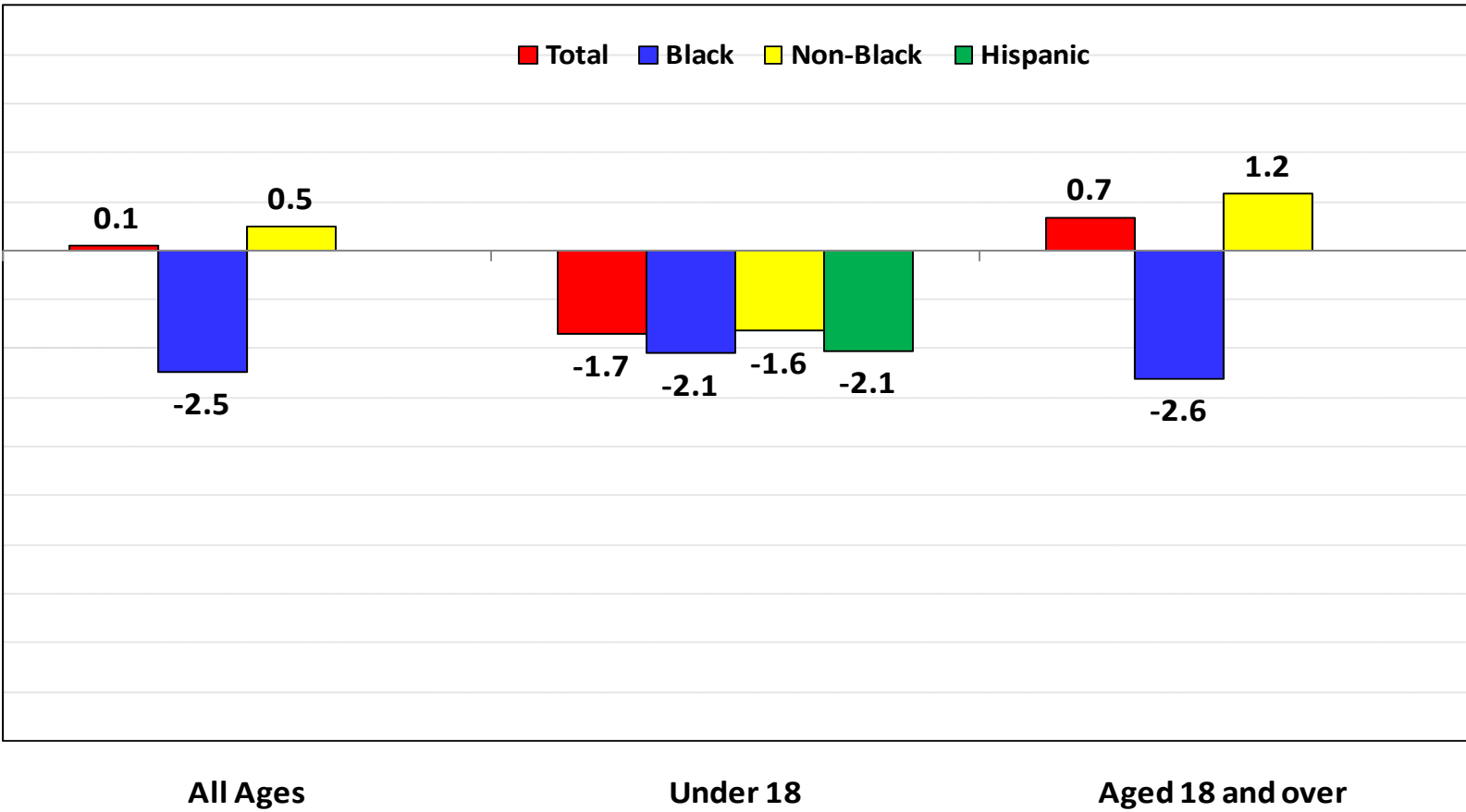
- Difference is Census figure MINUS DA estimate, so negative number implies undercount
- Percent difference is calculated on basis of DA estimate

Overall Results

Demographic Analysis Estimates, Census Count, and Population Estimate : April 1, 2010 (population in millions)

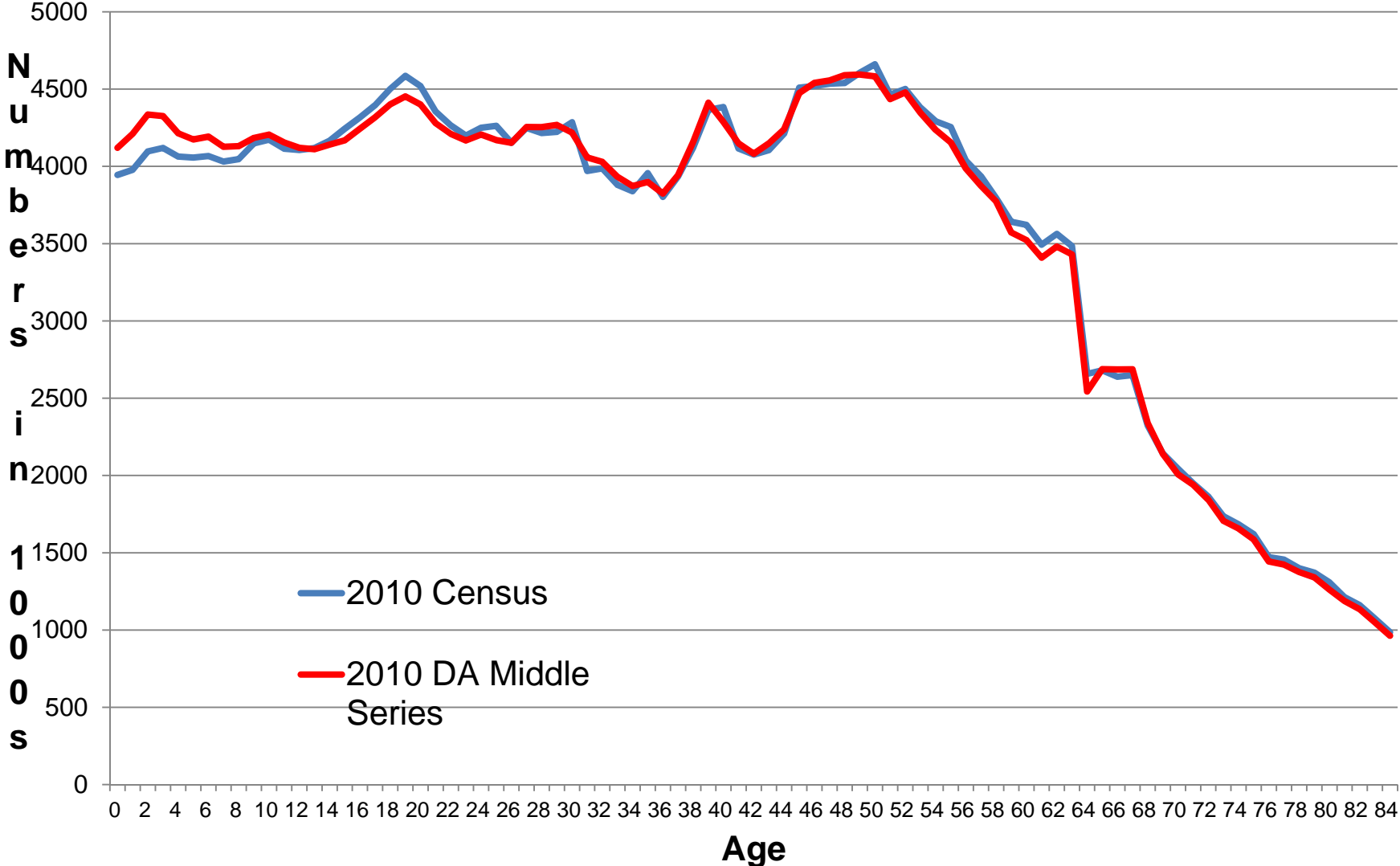


Percent Difference Between the Census and Demographic Analysis for Selected Race Groups and Hispanic Origin: 2010

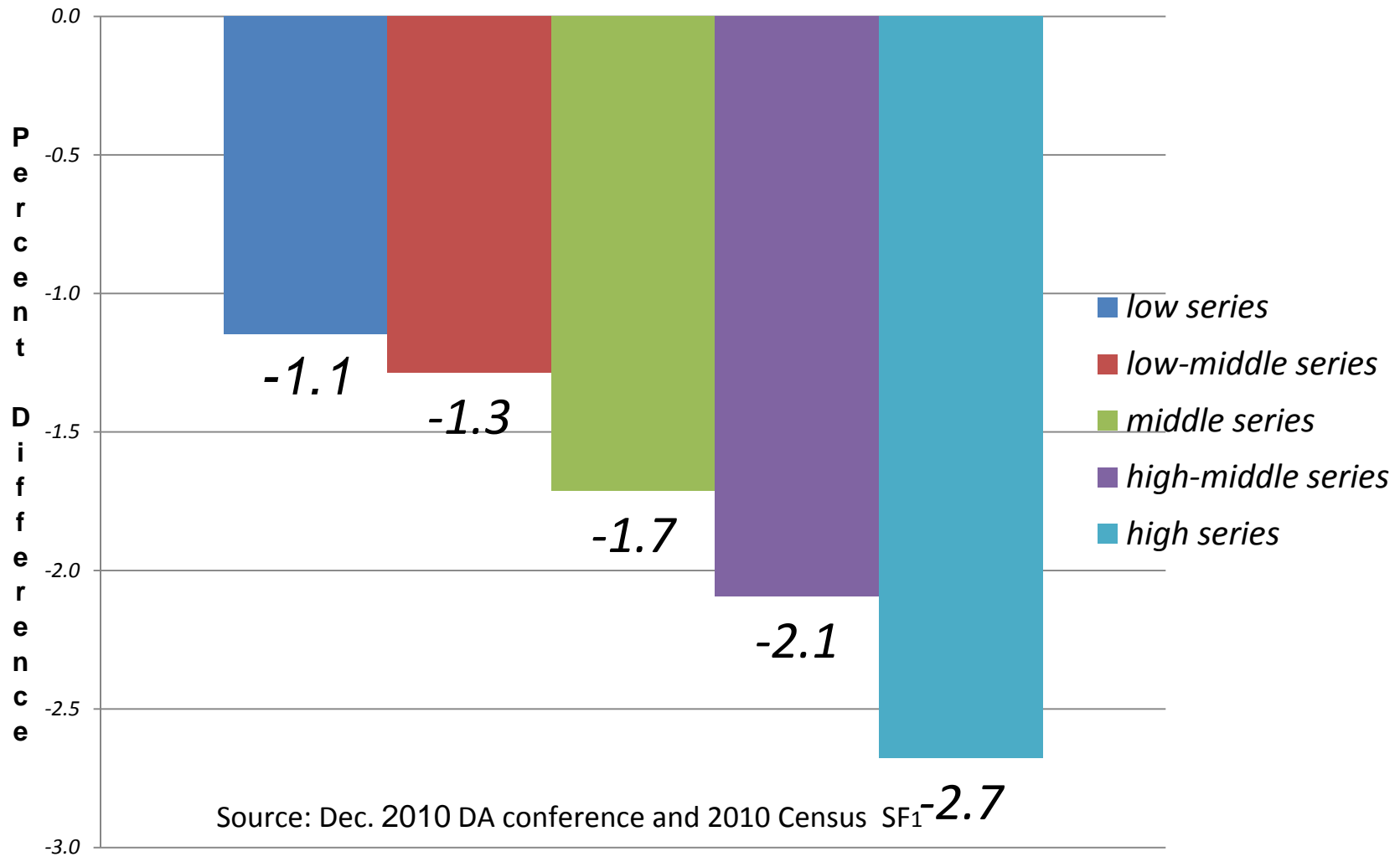


Note: Black refers to Black alone with Some Other Race recorded.

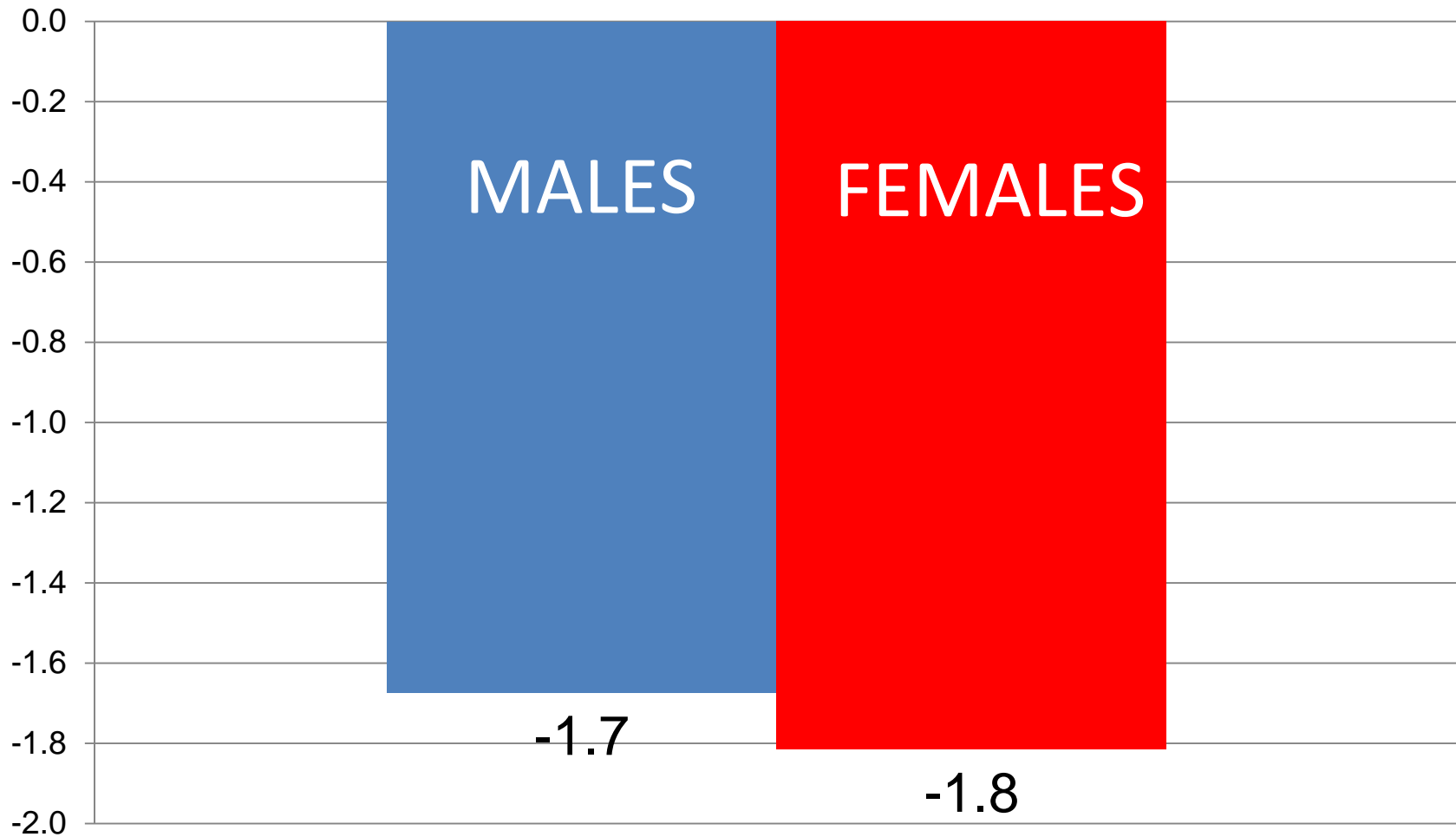
2010 Census and Middle DA Estimates by Single Year of Age



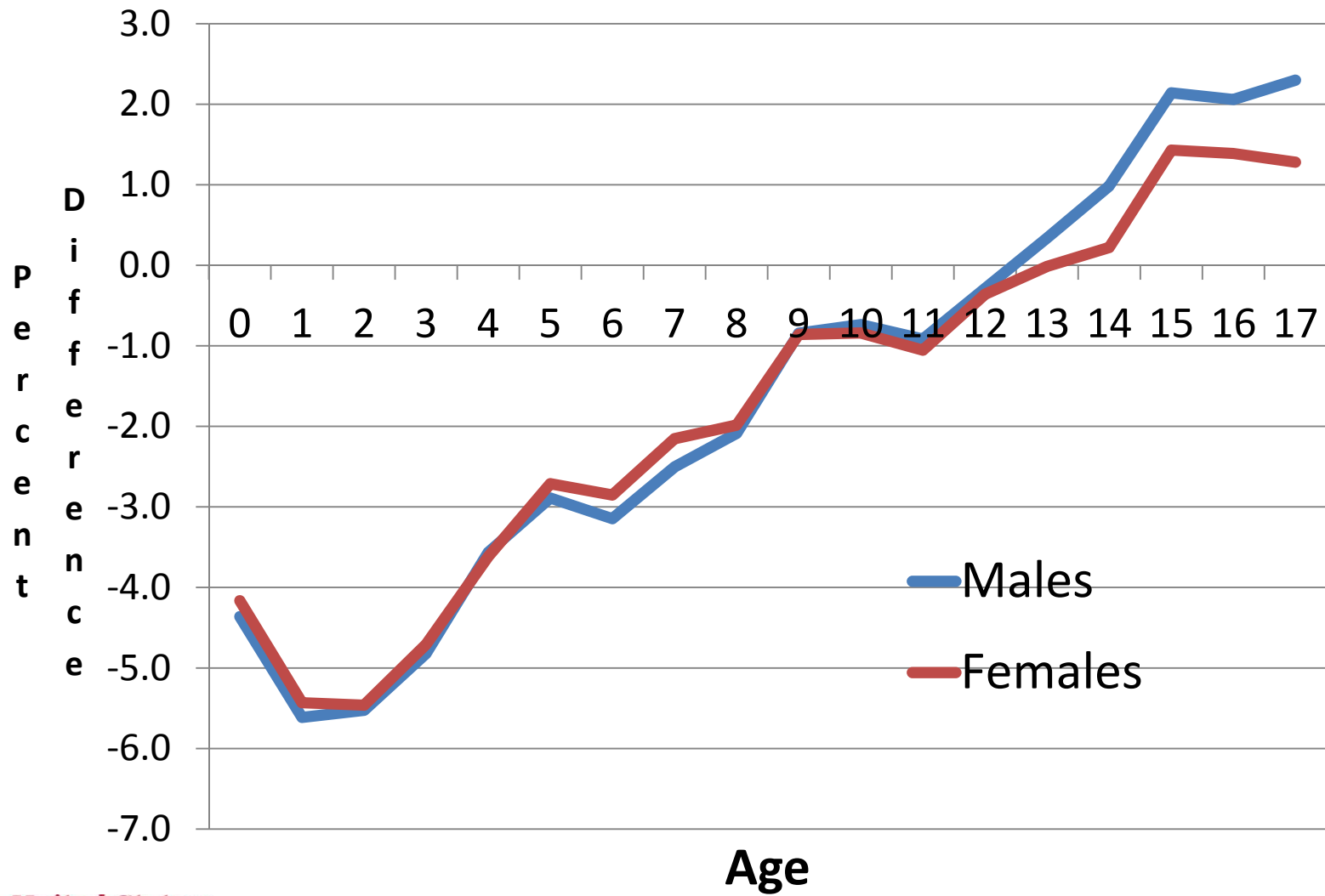
Percent Difference Between Census and Demographic Analysis for Children (age 0-17) for 5 DA Series



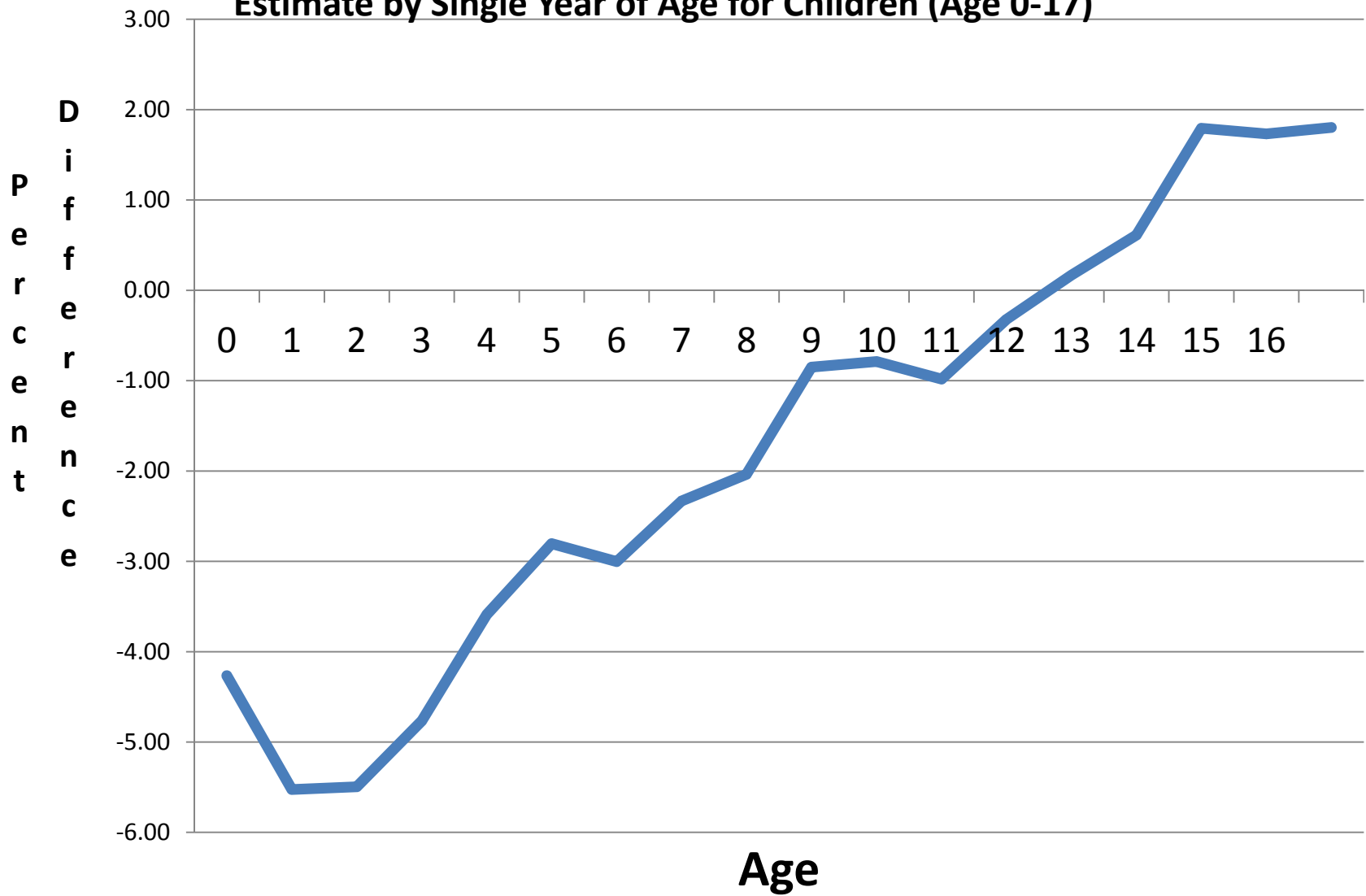
Percent Difference Between 2010 Census and Middle Series DA Estimates For Children (Age 0-17) by Sex



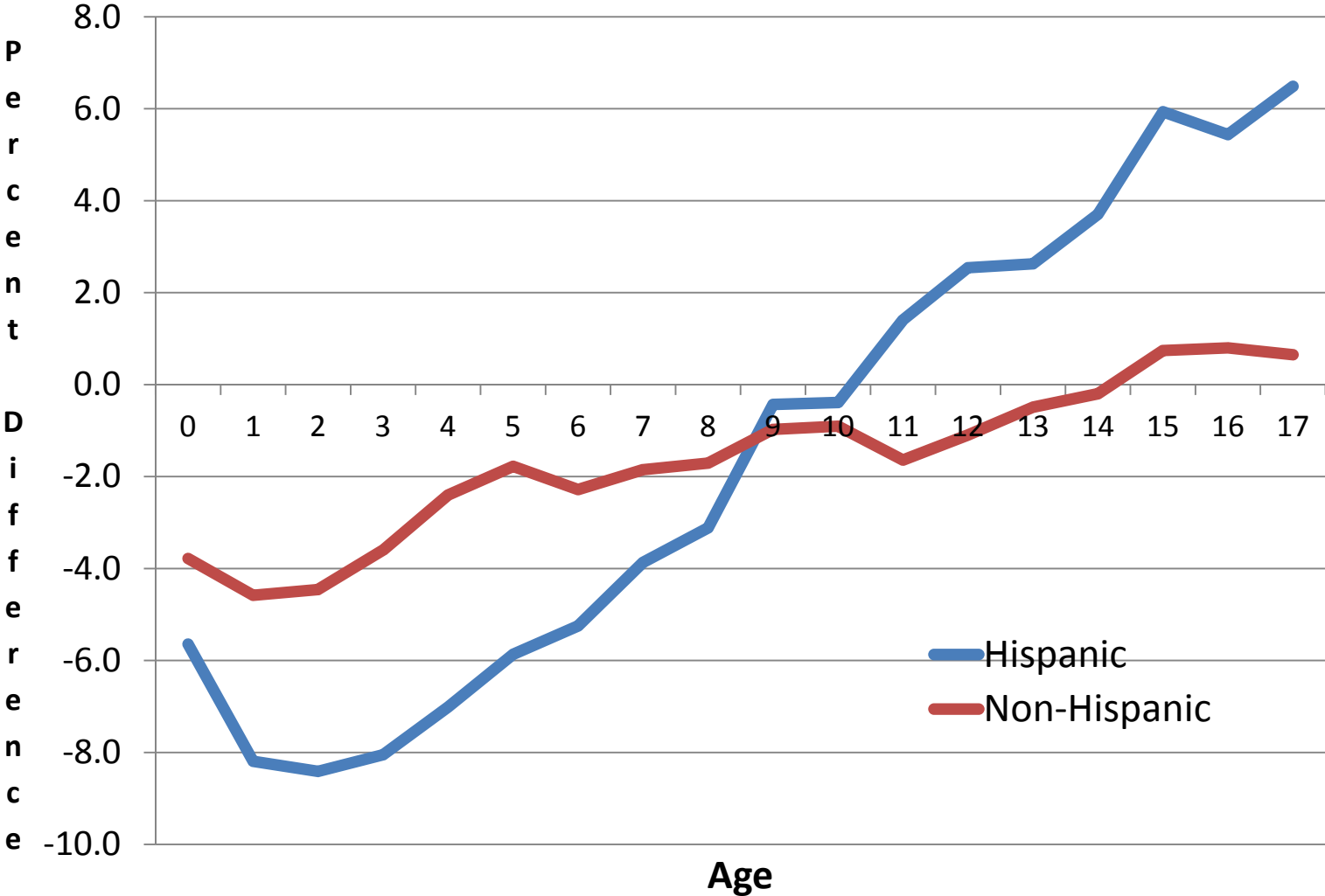
Percent Difference Between 2010 Census and Middle Series DA Estimates by Age and Sex for Children (age 0-17)



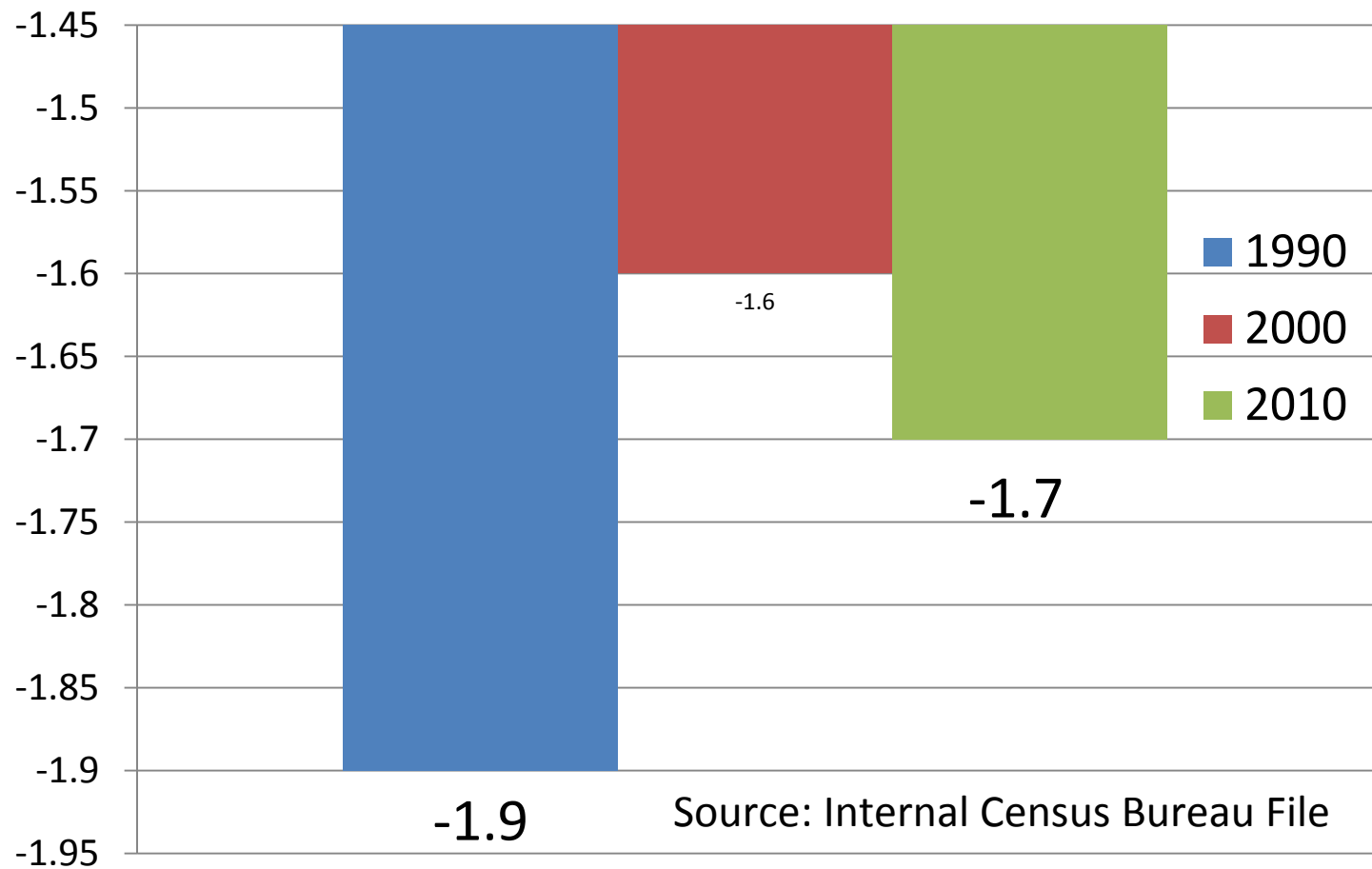
Percent Difference Between 2010 Census and Middle Series DA Estimate by Single Year of Age for Children (Age 0-17)



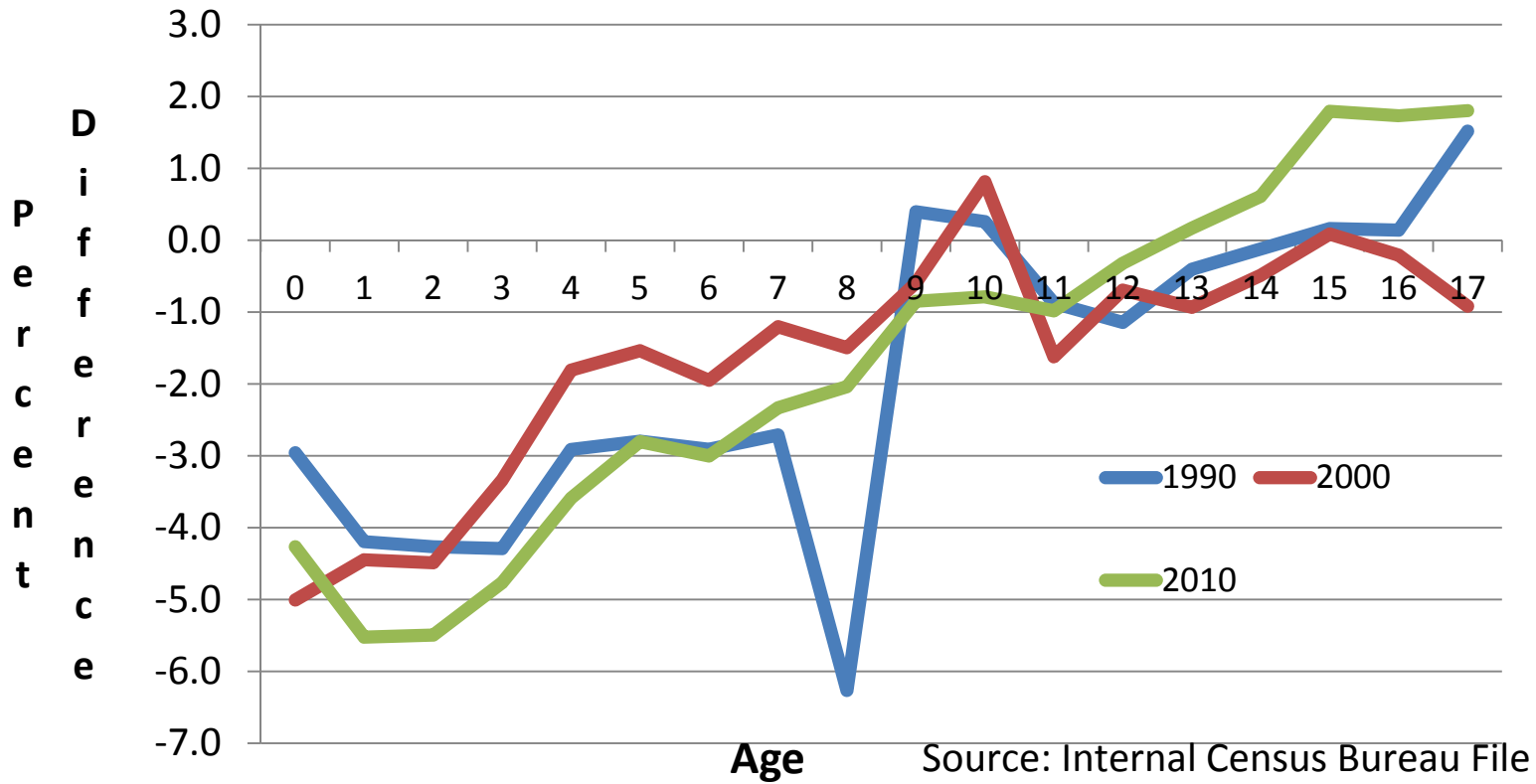
Percent Difference Between 2010 Census and Middle Series DA Estimates for Hispanic and Non-Hispanic Children by Single Year of Age



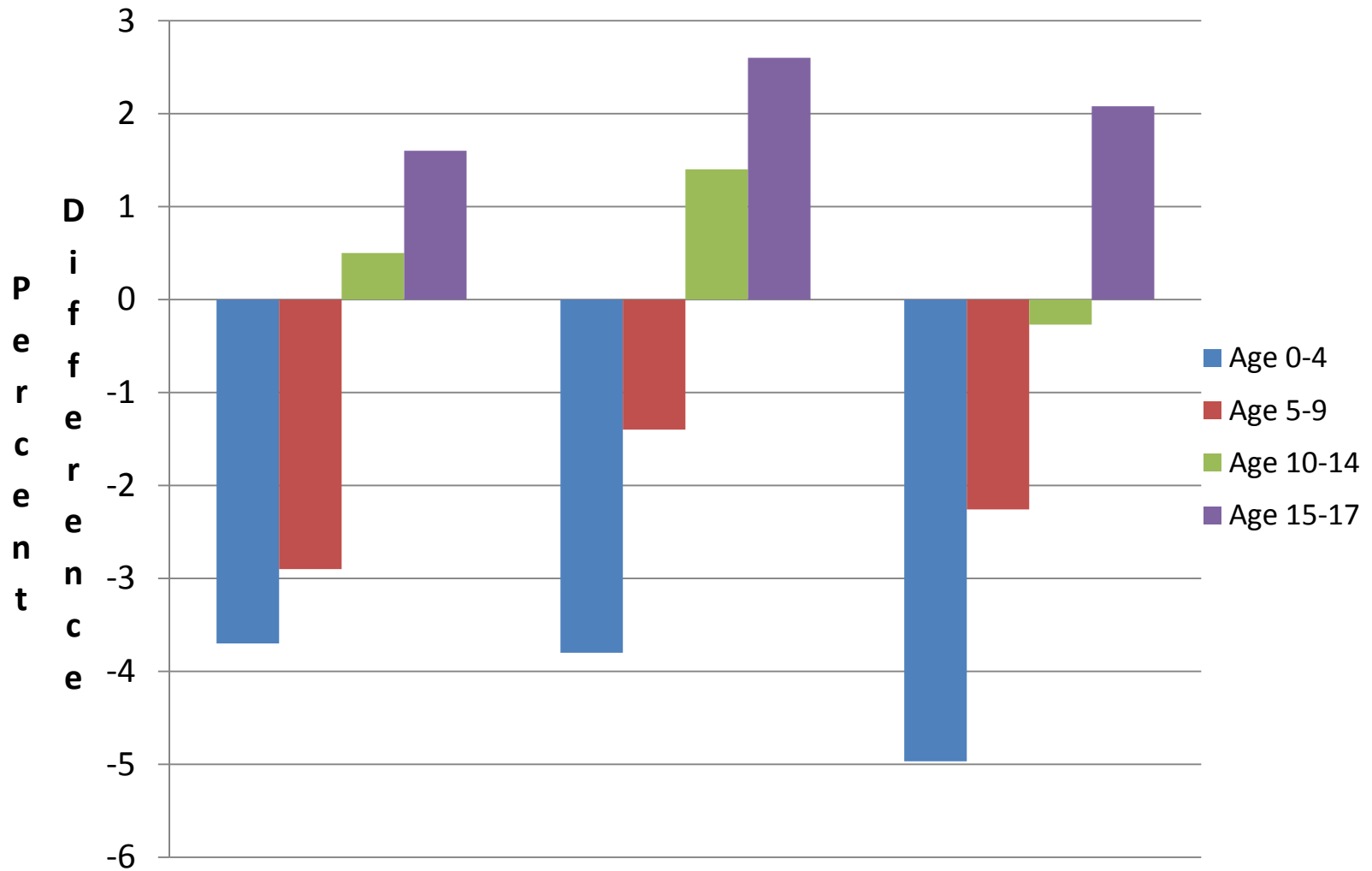
Percent Difference Between Census and DA Estimates for Age 0-17 for 1990, 2000, and 2010



Percent Difference Between Census and DA Estimates for Children (Age 0-17) for 1990, 2000, 2010



Percent Difference Between Census and DA Estimates by 5-Year Age Groups: 1990, 2000, and 2010



Key Findings

- Children have a net undercount & adults have a net overcount in 2010 Census
- Black and Hispanic Children have slightly higher undercount rates than non-Black Children
- No difference by sex
- Younger children (Under Age 5) have the highest net undercount rate
- There is a net overcount for persons age 14 to 18
- For children, 2010 higher undercount rate for every age compared to 2000
- The age structure of net undercounts for children is very consistent for 1990, 2000 and 2010

Future Plans

- Look at Black and Non-Black by single year of age for 2010.
 - Black Alone and Black Alone or in combination
- Produce tables for children by single-year of age (Black and Non-Black) for each census since 1950
- Explore reasons for net undercounts and overcounts of children in the census

THANKS

Contact Information

William O'Hare

U.S. Census Bureau

William.Peter.OHare@census.gov