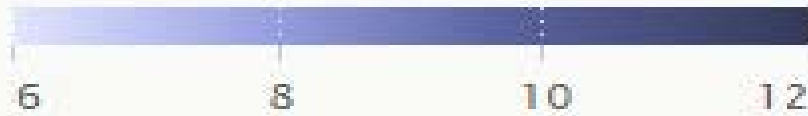
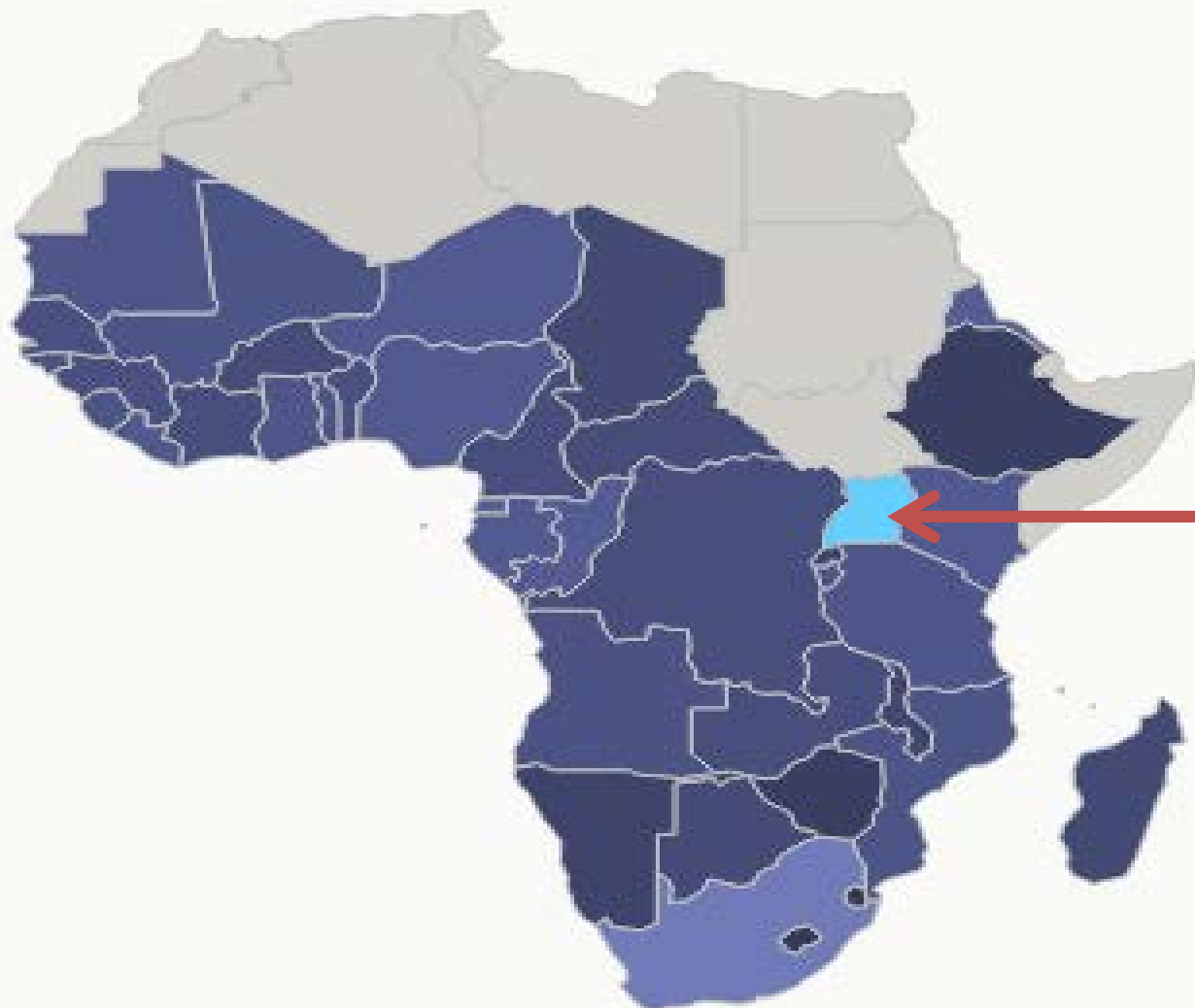


Characteristics, regional trends and determinants of teenage pregnancy in Uganda

Joseph Byonanebye, MPH
Doctoral Candidate, PhD in Public and Community Health

January 2017



Presentation Outline

- Introduction
- Significance
- Specific aims
- Approach
- Results
- Next steps

Teenage Pregnancy Situation

- Over 16 million births occur among teenagers globally
- 95% of those come from low and middle income countries
- Largest percentage come from Sub- Sahara Africa

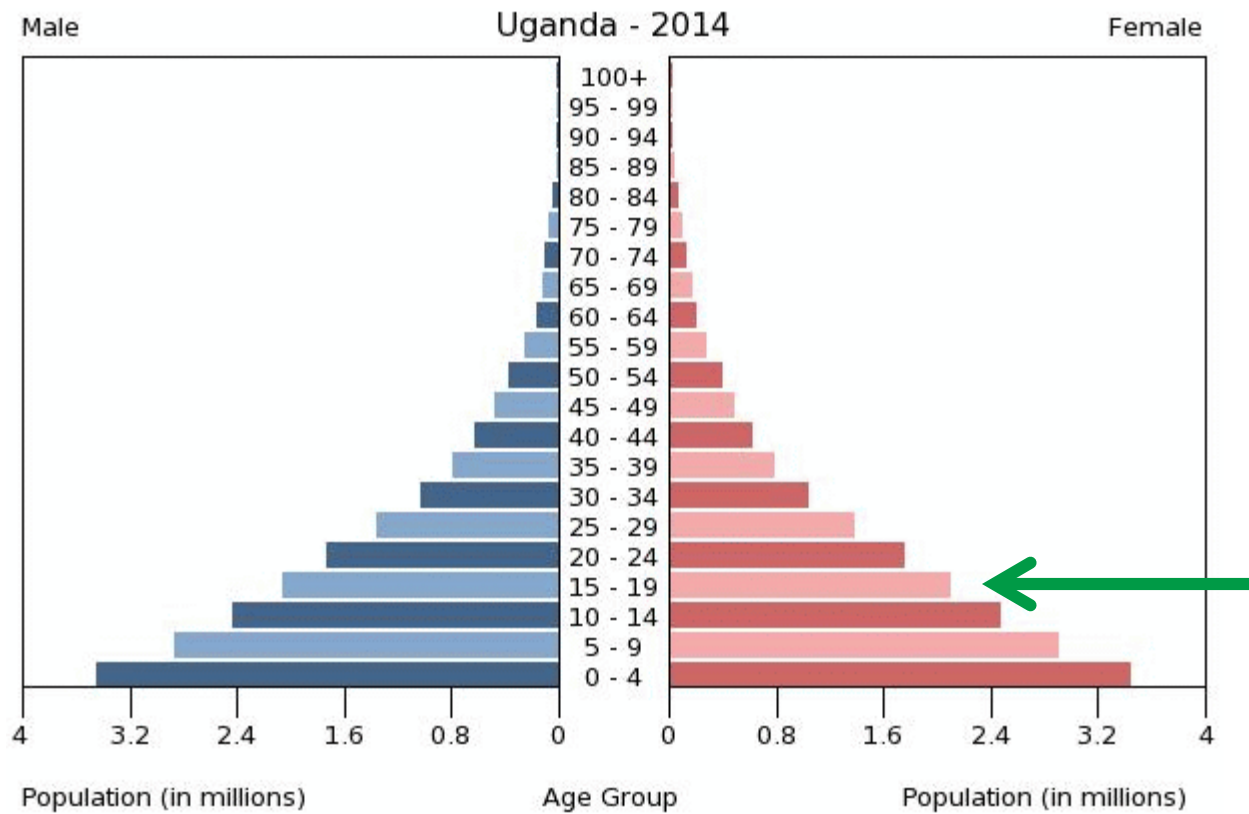
Teenage Pregnancy Situation



Teenage Pregnancy Uganda

- More than half of the population is below 18 years of age
- About $\frac{1}{4}$ of teenagers become pregnant
- Teenage birth rate of 122/1000

Demographic Profile of Uganda



Does it matter?



Health and Social Effects

- Higher rates of maternal and infant mortality
- Global burden of disability adjusted life years
- Abortion and associated medical complications
- Stigma
- Intimate partner violence
- School development
- Poverty and limited future financial capacity

How Uganda is intervening



**THE NATIONAL
STRATEGY TO END
CHILD MARRIAGE
AND TEENAGE
PREGNANCY**

2014/2015 – 2019/2020

*A society free from child marriage
and teenage pregnancy*

June 2015

Mixed Methods Approach

Aim

Method

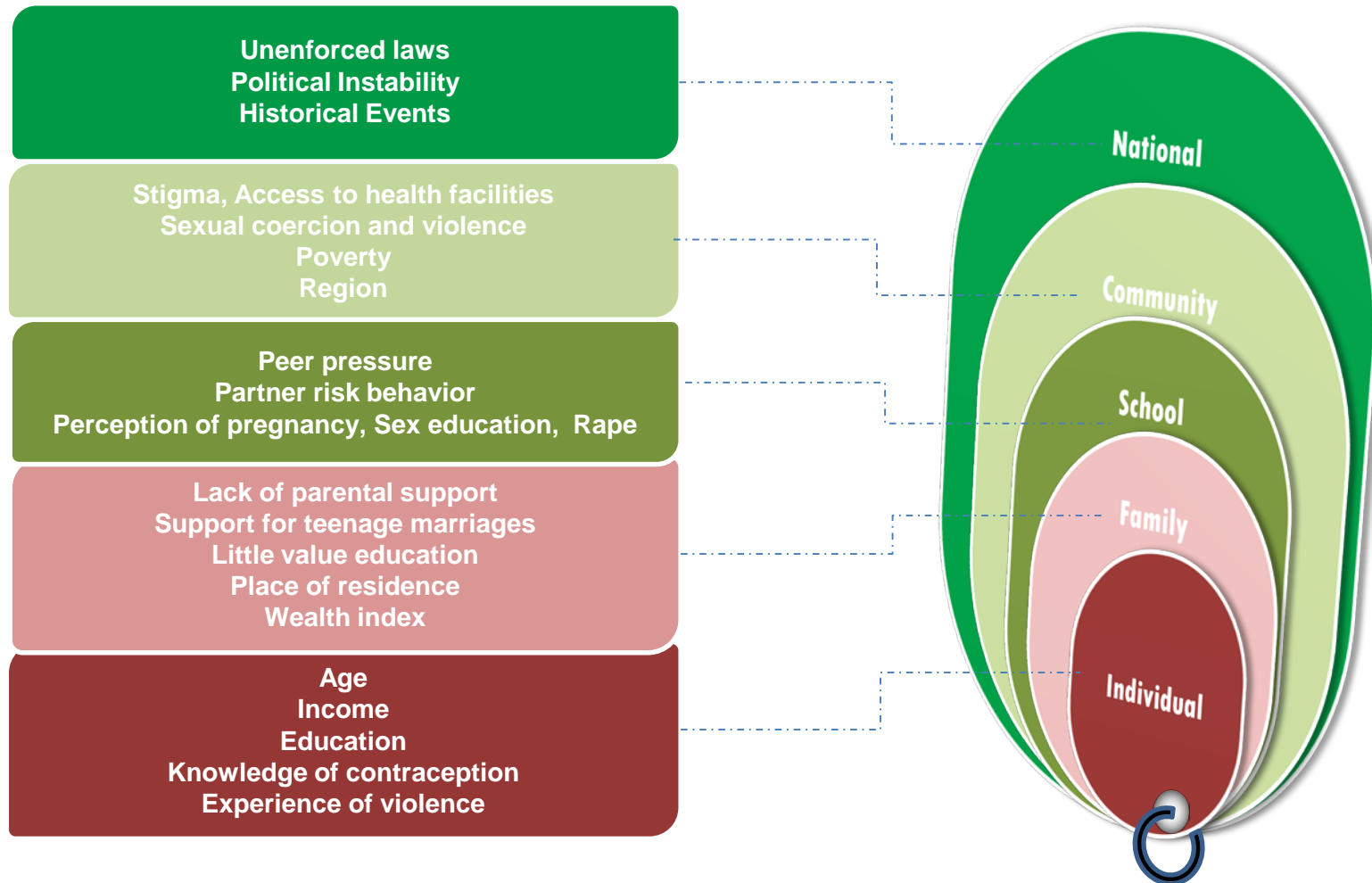
I. To examine the health, social and demographic factors associated with of teenage pregnancy, measured by the UDHS in the nine regions of Uganda

Quantitative
Methods

II. To explore risk and protective factors of teenage pregnancy in the two regions of Uganda with highest and lowest rates

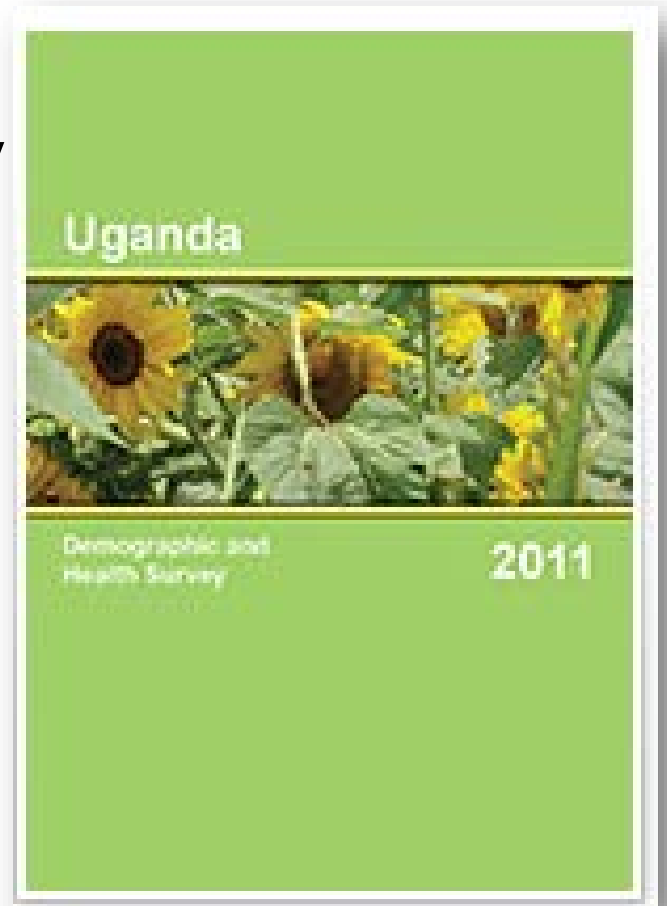
Qualitative
Methods

Ecological Model: Teenage Pregnancy

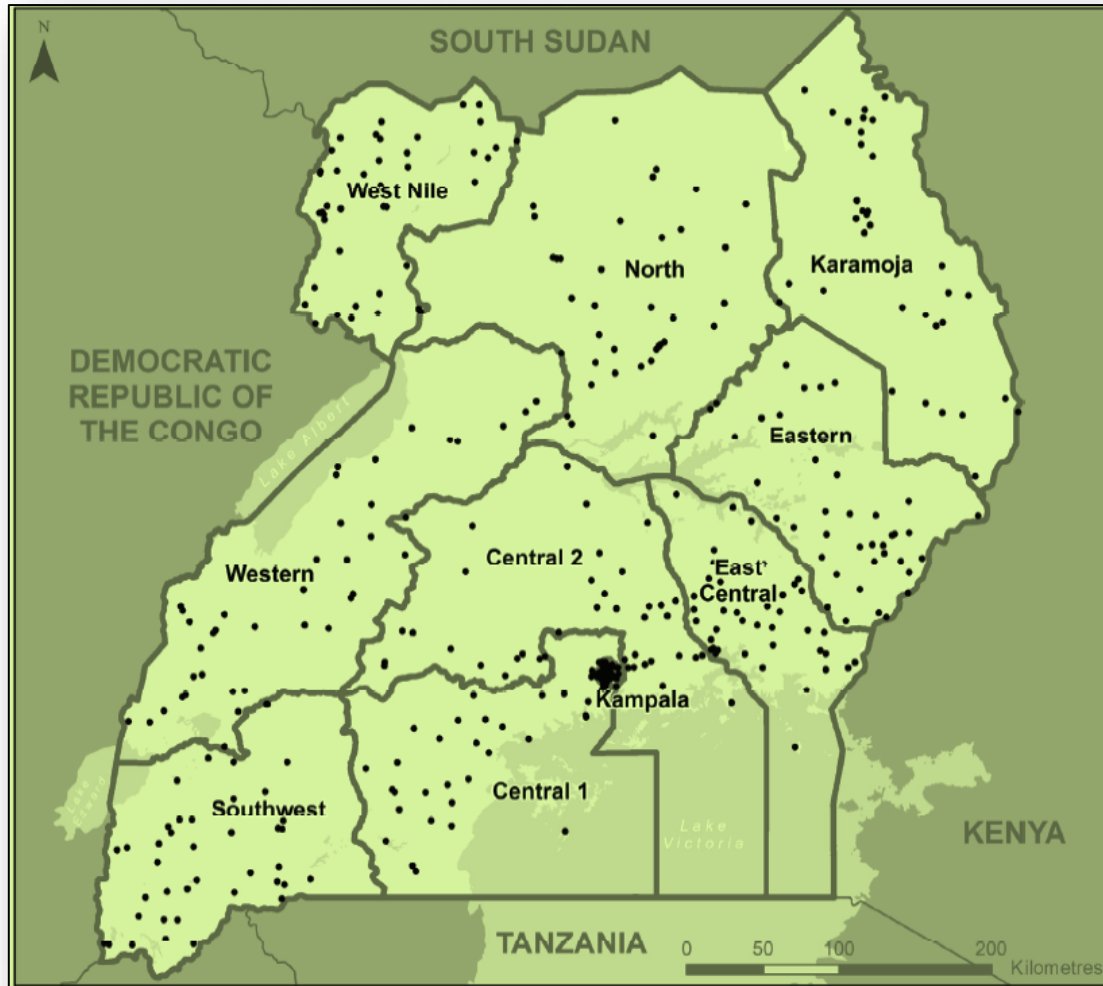


Source of Data

- Uganda Demographic and Health Survey
- UDHS 2006
- UDHS 2011



Regions of Uganda



Measures of Interest

- Outcome of interest: Current pregnancy
 - Women (15- 19) currently pregnant at the time of the survey
- Variables:
 - Age
 - Highest educational level
 - Type of place of residence
 - Wealth index Region
 - Religion
 - Union/ Marriage
 - Recent sexual exposure

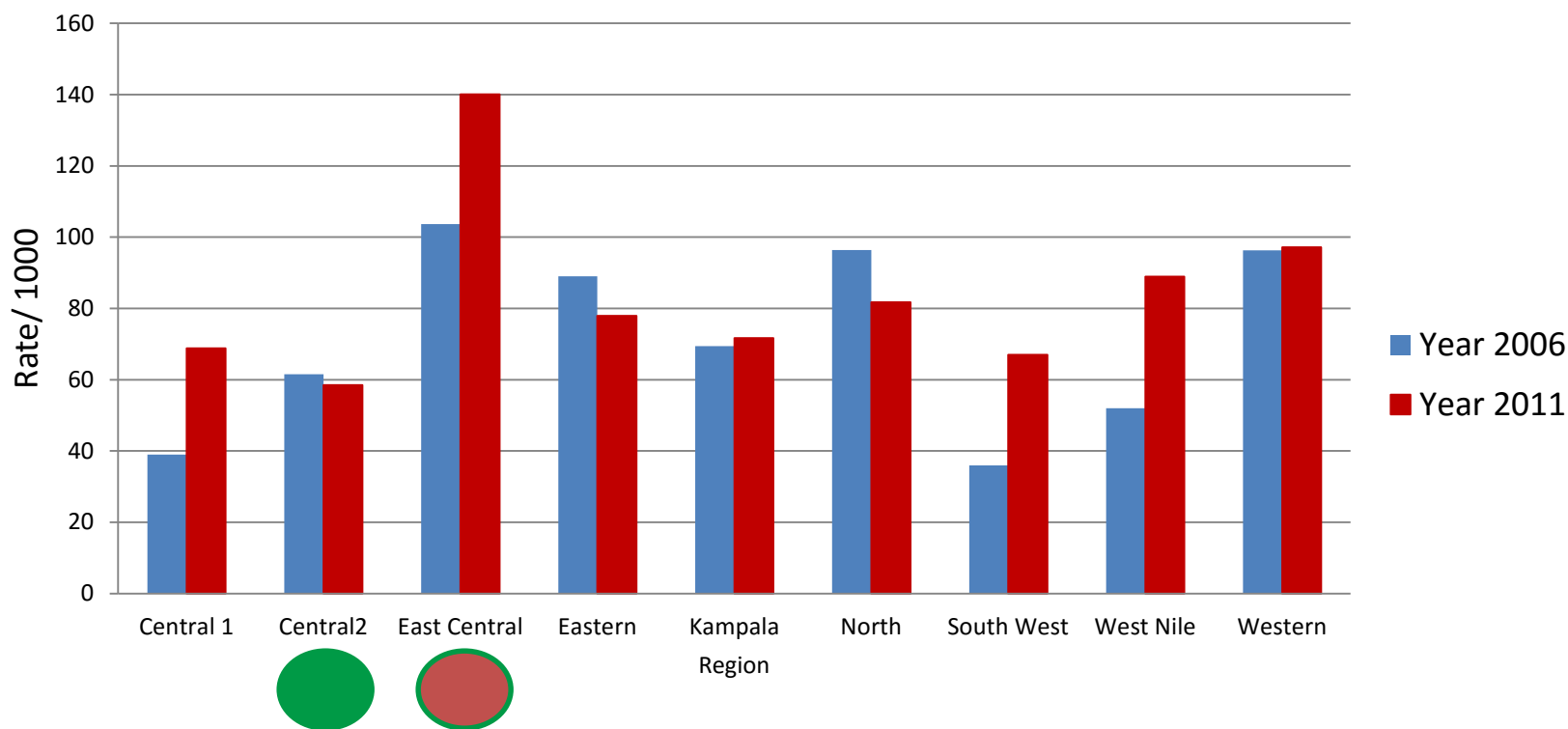
Analysis

- Describe the sample characteristics
- Proportion of teenagers- pregnant computed for each region
- Bivariate analysis to examine the rate of pregnancy by various demographic characteristics.
- Logistic regression- significant covariates

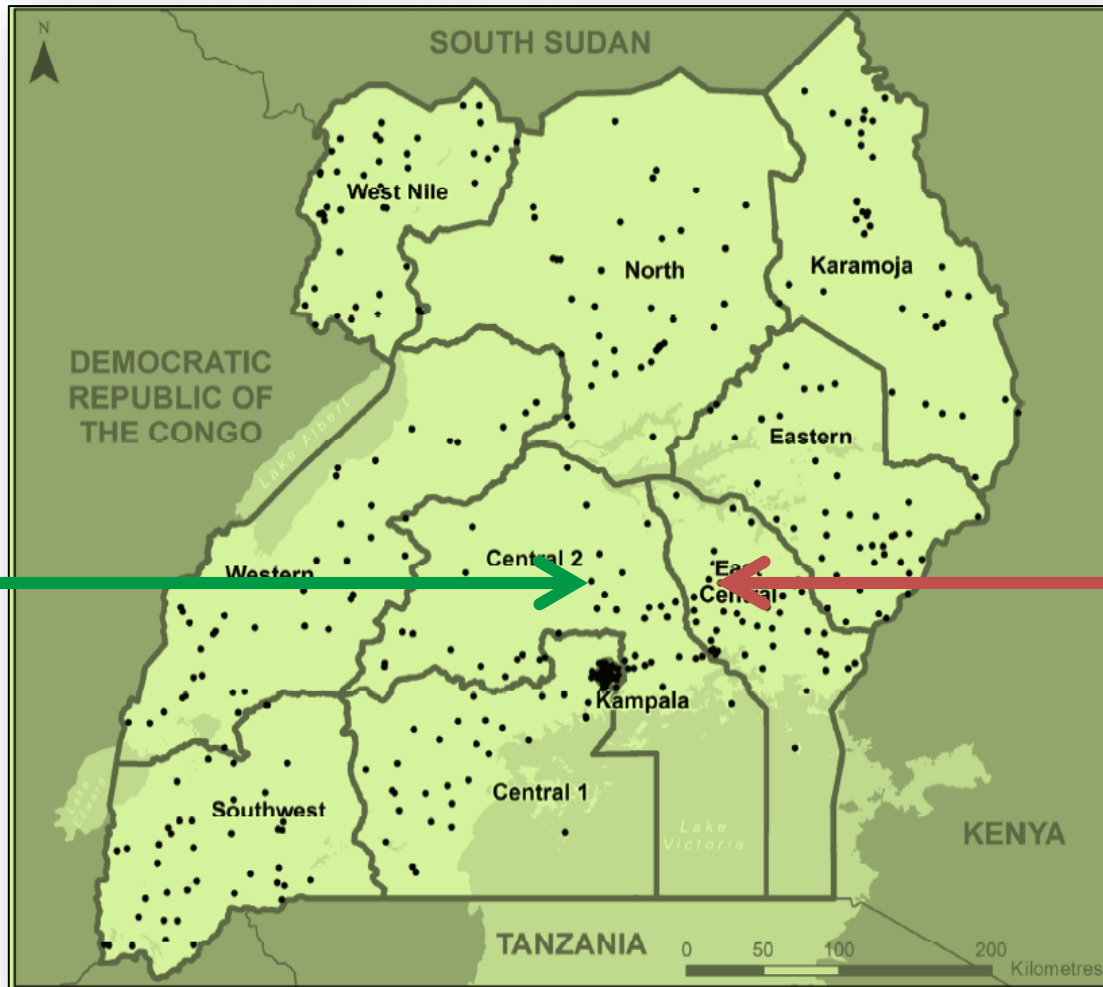
Results

- Year 2006 1,948 respondents 7.3% pregnant
- Year 2011 2,026 respondents 8.1% Pregnant
- Variability in socio demographic characteristics across regions which could not hint on the association with teenage pregnancy
- Teenage pregnancy was consistently higher and lower in some regions.

Rates of Teenage Pregnancy



Regions of Uganda



Multivariate analysis of factors associated with current pregnancy in Uganda

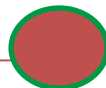
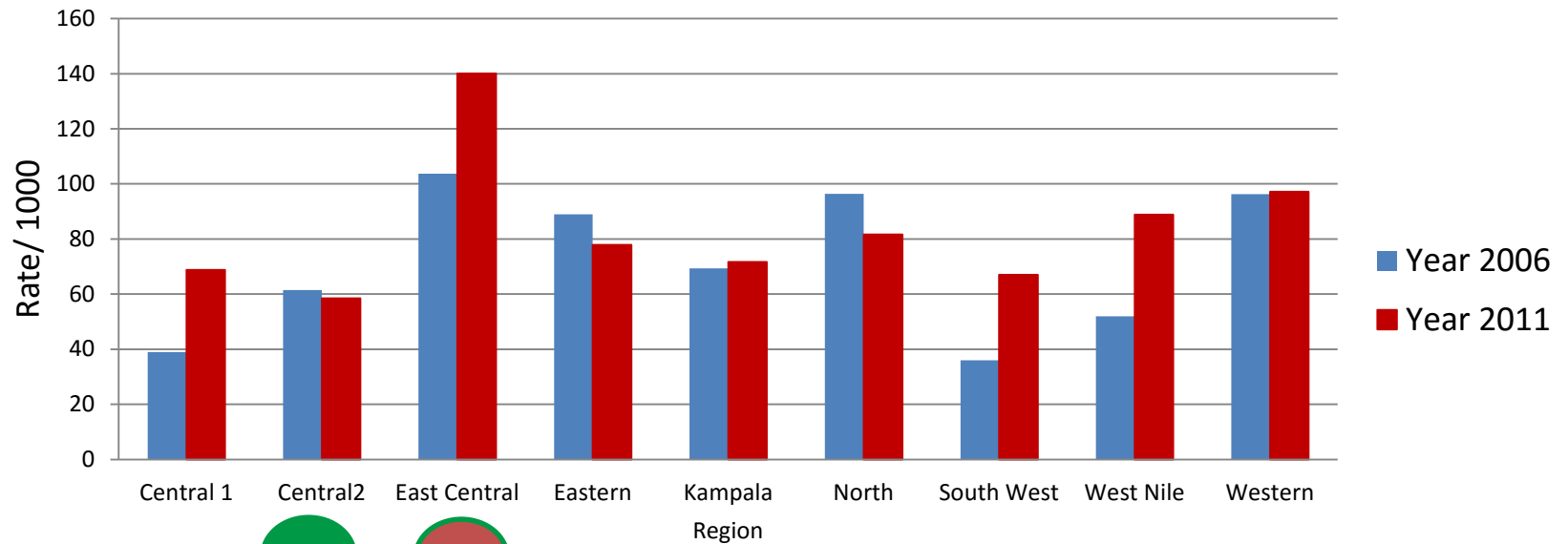
| | | 2006 | | | 2011 | |
|---------------------|-----|-----------------------|------------------|-----|---------------------|------------------|
| Characteristic | % | Odds Ratio | | | Odds Ratio | |
| | | (95 CI) | P-Value | % | (95% CI) | P-value |
| Residence | | | 0.0264 | | | |
| Urban | 0.7 | Reference | | | Not Significant | |
| Rural | 6.7 | 2.23 (1.09, 4.55) | 0.0271 | | | |
| Wealth Index | | | | | | 0.009 |
| Rich | | | | 2.4 | Referent | |
| Middle | | Not Significant | | 1.5 | 2.3 (1.26, 4.02) | 0.006 |
| Poor | | | | 4.1 | 2.03 (1.16, 3.55) | 0.012 |
| Marriage | | | <0.001 | | | <0.001 |
| Never | 1.8 | Reference | | 1.5 | Reference | |
| Married | 3.1 | 35.9 (15.6, 83.9) | <0.001 | 2.5 | 106.8 (50.8, 225.2) | <0.001 |
| Living with partner | 2.1 | 46.6 (20.80, 104.38) | <0.001 | 3.7 | 92.8 (47.9, 179.7) | <0.001 |
| Separated | 0.4 | 24.7 (9.26, 65.72) | <0.001 | 3.1 | 17.7 (6.8, 46.6) | <0.001 |

Multivariate analysis of factors associated with current pregnancy in Uganda

| Characteristic | | 2006 | | | 2011 | |
|----------------------------|------------|---------------------------|------------------|------------|----------------------------|------------------|
| Region | | | | | | 0.009 |
| Kampala | | | | 0.8 | Reference | |
| Central 1 | | | | 0.5 | 0.77 (0.32,1.86) | 0.5664 |
| Central 2 | | | | 0.6 | 0.86 (0.35, 2.13) | 0.7428 |
| East Central | | Not Significant | | 1.4 | 1.96 (0.89, 4.34) | 0.0927 |
| Eastern | | | | 0.9 | 0.42 (0.17, 1.09) | 0.0749 |
| North | | | | 0.8 | 0.50 (0.19,1.37) | 0.1801 |
| South West | | | | 0.7 | 0.64 (0.25, 1.670) | 0.3624 |
| West Nile | | | | 0.6 | 0.37 (0.12, 1.11) | 0.0769 |
| Western | | | | 1.2 | 0.58, (0.24, 1.39) | 0.2175 |
| Births last 5 years | | | <0.001 | | | <0.001 |
| Yes | 2.2 | Reference | | 2.6 | Reference | |
| No | 5.5 | 8.1 (4.65, 13.96) | <0.001 | 5.4 | 6.03 (3.67, 9.88) | <0.001 |

Next Steps

- Qualitative Study in the two regions
 - Key Informant Interviews
 - Focus Group Discussions



References

- Batog Jennifer. (2006). Teen birth rate hurts economy. *Teen Birth Rate Hurts Economy*,
- Capri-Mara Fillmore, Benjamin Jones, Kathy Blair, & Vivian Chen. *Teen risky sexual behavior in milwaukee*. (). City of Milwaukee Health Departmen.
- CDC. (2011). *Teen pregnancy: Improving the Lives of young people and strengthening communities by reducing teen pregnancy*. ().
- Centers for Disease Control and Prevention. (2013). Youth risk behavior surveillance System
. Retrieved from <http://nccd.cdc.gov/YouthOnline/App/Results.aspx?TT=&OUT=&SID=HS&QID=H62&LID=&YID=&LID2=&YID2=&COL=&ROW1=&ROW2=&HT=&LCT=&FS=&FR=&FG=&FSL=&FRL=&FGL=&PV=&TST=&C1=&C2=&QP=G&DP=&VA=CI&CS=Y&SYID=&EYID=&SC=&SO=>
- Children's Hospital of Wisconsin. (2013). *Community health needs assessment milwaukee*. (). Milwaukee:
- Cunnington, A. J. (2001). What's so bad about teenage pregnancy? *The Journal of Family Planning and Reproductive Health Care / Faculty of Family Planning & Reproductive Health Care, Royal College of Obstetricians & Gynaecologists*, 27(1), 36-41.
- Fillmore CM, C. E. (2004). Pregnancy-related depression in milwaukee schools. American Public Health Association.
- Rachel Gold, Ichiro Kawachi, Bruce P. Kennedy, John W. Lynch, and Frederick A. Connell, (2001). Ecological Analysis of Teen Birth Rates: Association with Community Income and Income Inequality
- Kearney, M. S., & Levine, P. B. (2009). Subsidized contraception, fertility, and sexual behavior. *The Review of Economics and Statistics*, 91(1), 137.
- Kearney, M. S., & Levine, P. B. (2012). Why is the teen birth rate in the united states so high and why does it matter? *The Journal of Economic Perspectives : A Journal of the American Economic Association*, 26(2), 141-166.
- Milwaukee Public Schools. (2014). **District fact sheet**. Retrieved from <http://mps.milwaukee.k12.wi.us/en/District/About-MPS/District-Fact-Sheet.htm>
- Molly M, L., & Patrick L. Remington. (2013). *Geographic and racial variation in teen pregnancy rates in wisconsin*. (). Wisconsin: Wisconsin Medical Society.
- National Campaign to Prevent Teen and Unplanned Pregnancy. (2014). **Counting it up: The public costs of teen childbearing**
. Retrieved from <http://thenationalcampaign.org/why-it-matters/public-cost#>
- Perper, K., Peterson, K., & Manlove, J. (2010). *Diploma attainment among teen mothers: Child trends, fact sheet publication*. (No. Publication #2010-01).

Thank you

Joseph Byonanebye, MPH, PhD Candidate
Medical College of Wisconsin
jbyonanebye@mcw.edu