

# Texas and San Antonio Youth

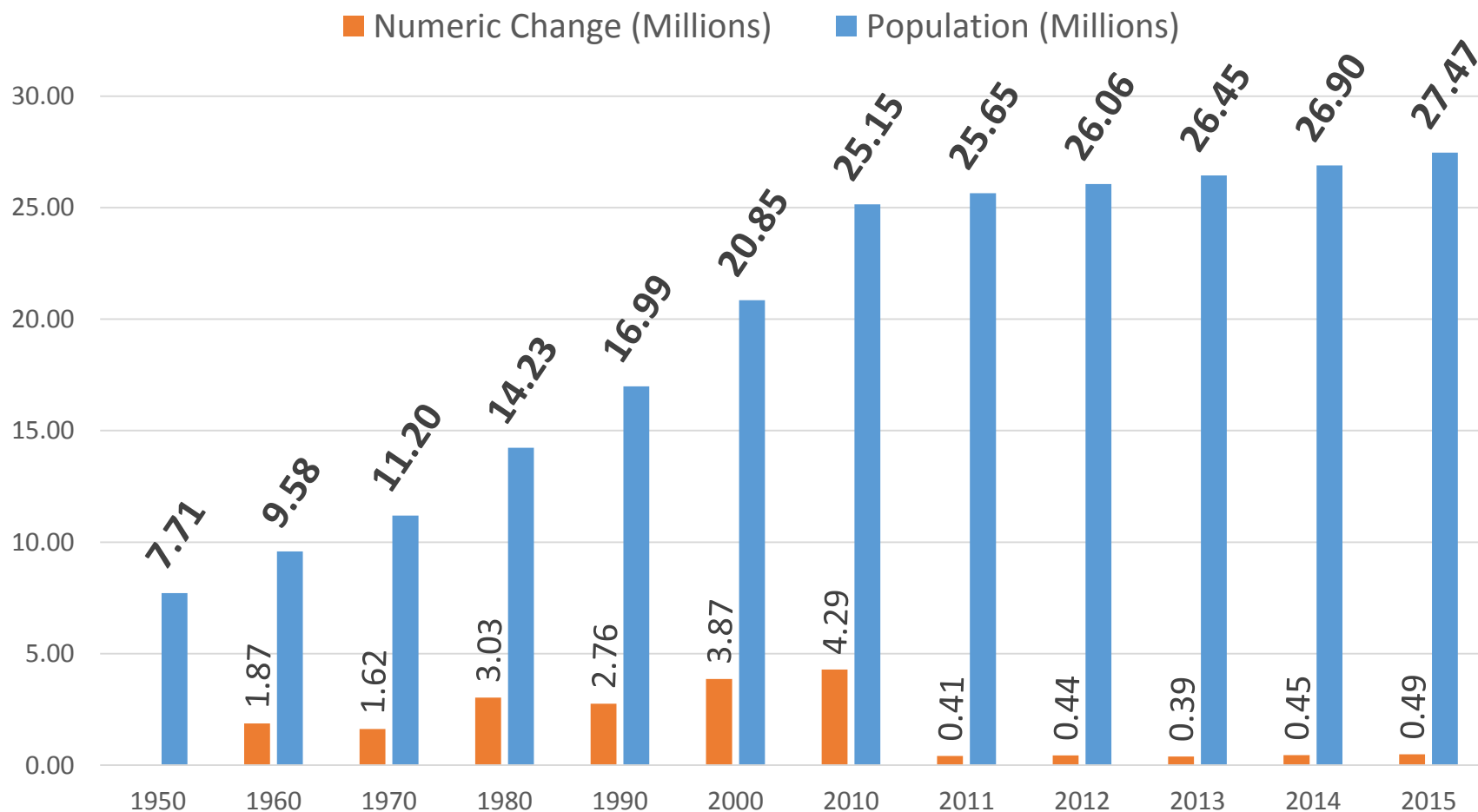
Interagency  
Children's Council  
San Antonio, Texas  
June 14, 2016



@TexasDemography

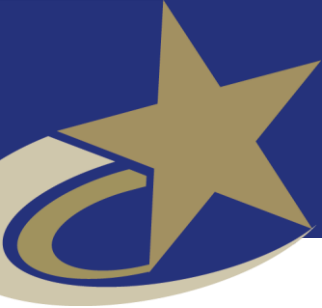


# Total Population and Population Change in Texas, 1950-2014

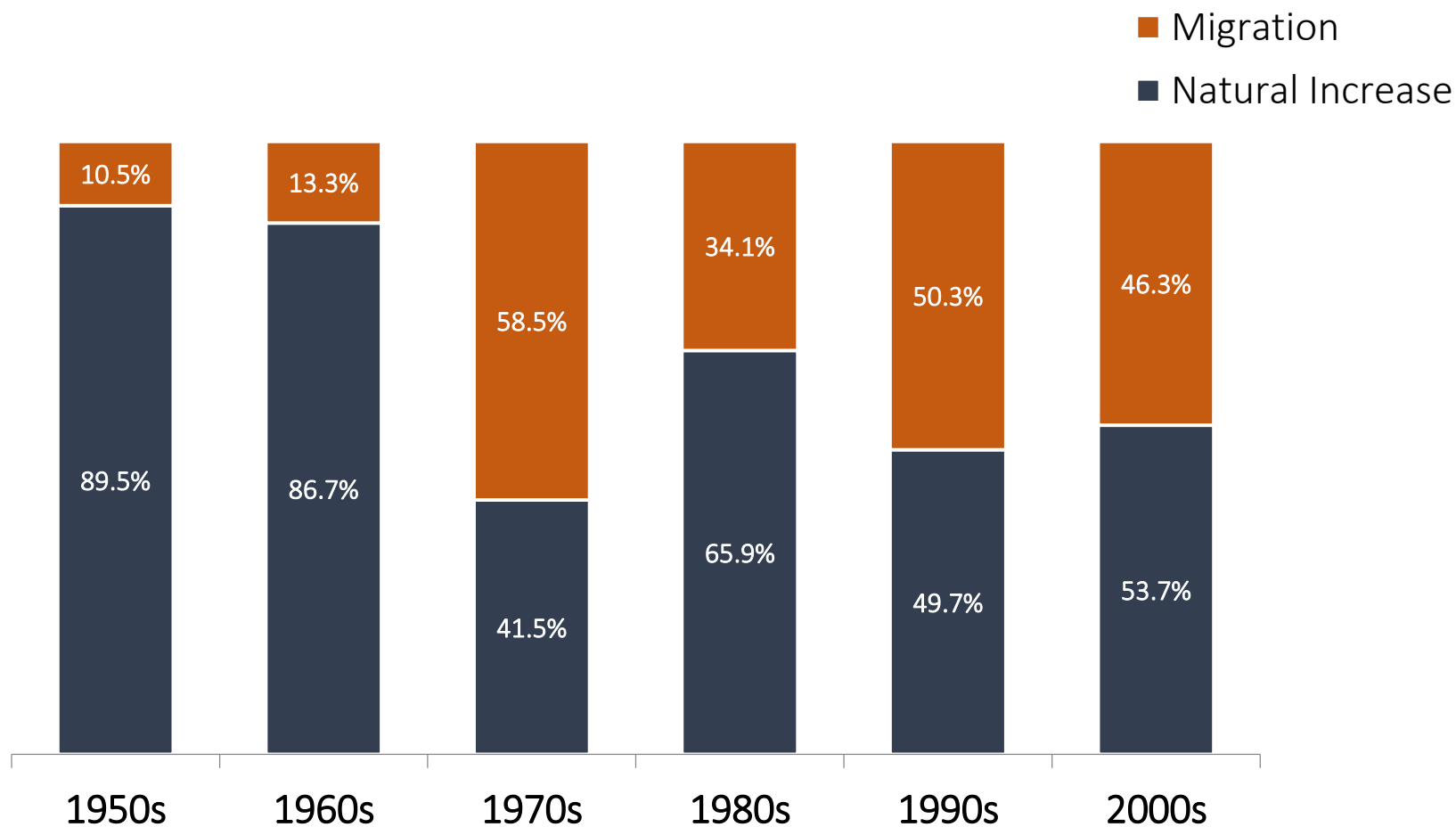


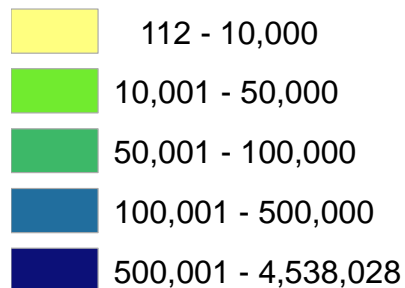
All values for the decennial dates are for April 1<sup>st</sup> of the indicated census year. Values for 2012-2014 are for July 1 as estimated by the U.S. Census Bureau.

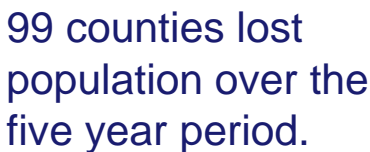
Source: U.S. Census Bureau, Census Counts and Population Estimates

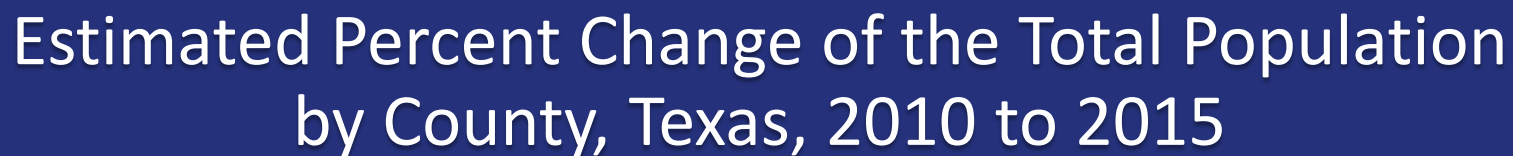


# Components of Population Change by Percent in Texas, 1950-2010



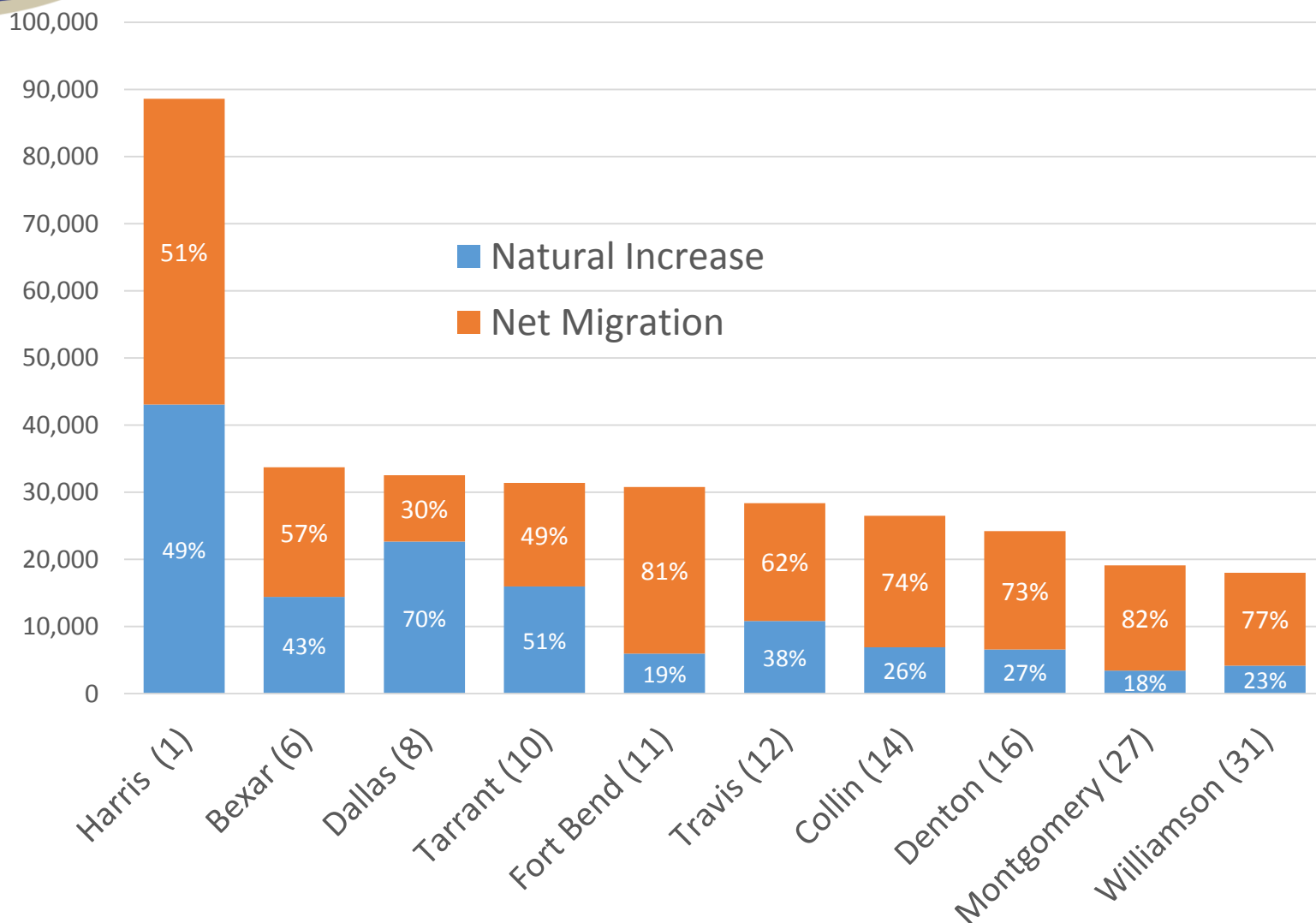








# Top Counties for Numeric Growth in Texas (U.S. Rank) by Components of Change, 2013-2014



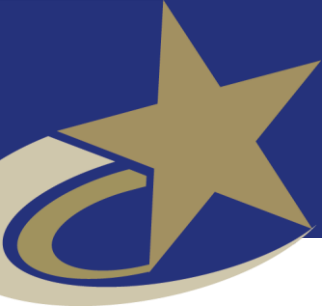


# Top Counties for Percent Growth\* in Texas, 2013-2014

	U.S. Rank	2013-2014 Percent Population Change	Percent Change from Migration	Percent of Migration that is International
<b>Hays</b>	<b>5</b>	<b>4.8%</b>	<b>83.89%</b>	<b>2.6%</b>
Fort Bend	6	4.7%	80.6%	17.37%
<b>Comal</b>	<b>9</b>	<b>4.0%</b>	<b>90.1%</b>	<b>3.0%</b>
Andrews	12	4.0%	62.8%	3.7%
Montgomery	13	3.8%	82.1%	10.4%
Williamson	14	3.8%	76.8%	7.8%
<b>Kendall</b>	<b>15</b>	<b>3.8%</b>	<b>98.0%</b>	<b>5.0%</b>
Ward	21	3.4%	72.0%	1.5%
Denton	23	3.3%	72.8%	14.2%
Collin	31	3.1%	73.9%	20.1%
Aransas	32	3.1%	110.8%	4.3%
Rockwall	35	3.0%	78.3%	7.8%
Waller	36	2.9%	77.2%	5.3%
Ector	37	2.9%	59.9%	2.0%
Guadalupe	42	2.8%	78.6%	4.9%

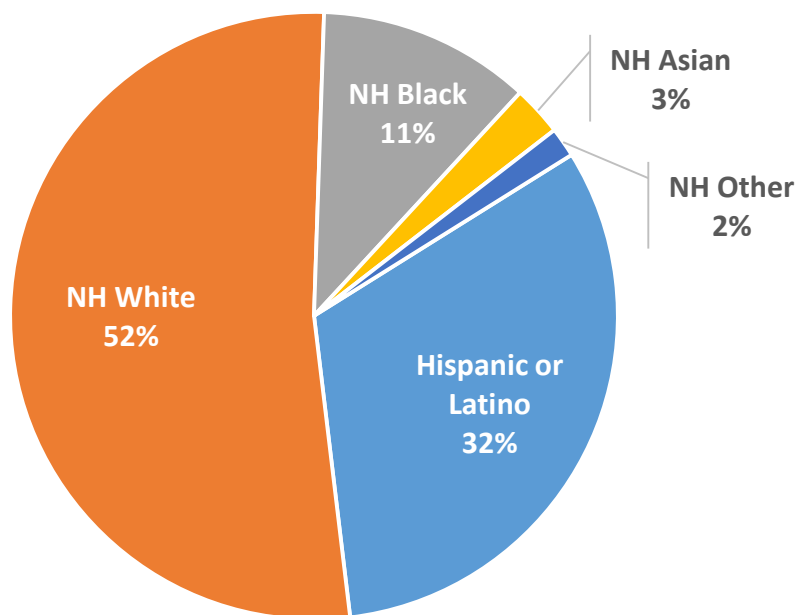
Source: U.S. Census Bureau, 2014 Vintage Population Estimates

\*Among Counties with 10,000 or more population in 2013

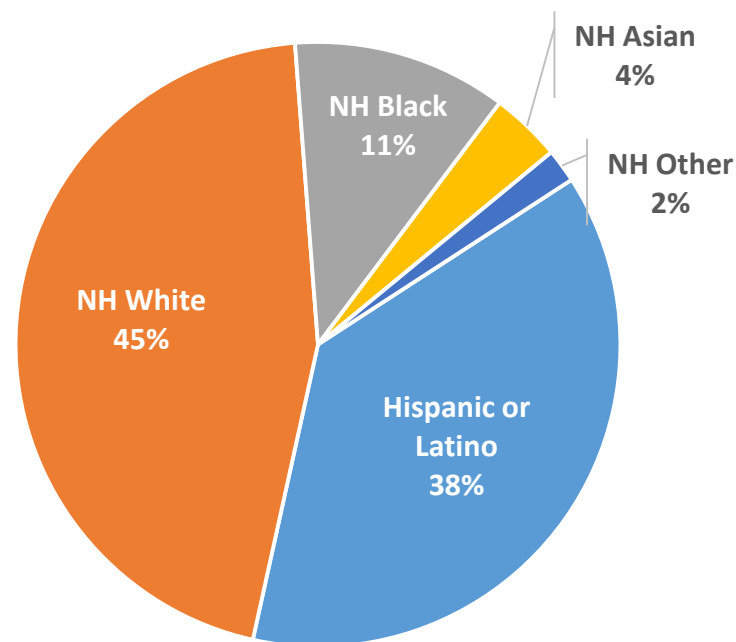


# Percent Population by Race and Ethnicity, Texas, 2000 and 2010

2000

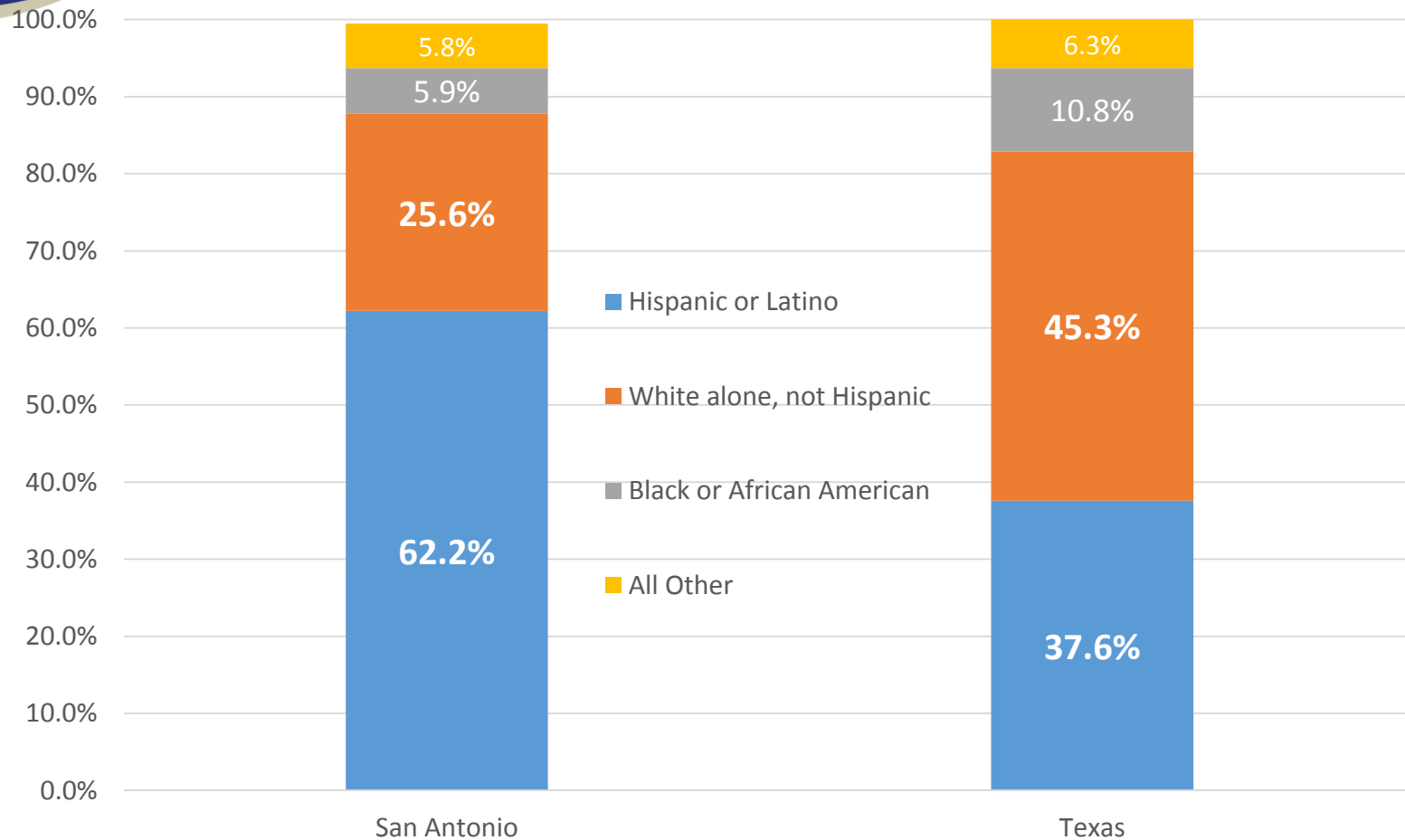


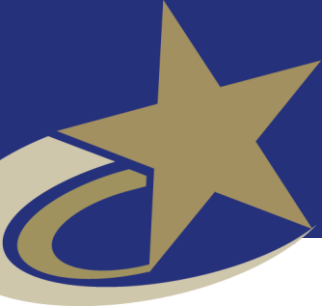
2010



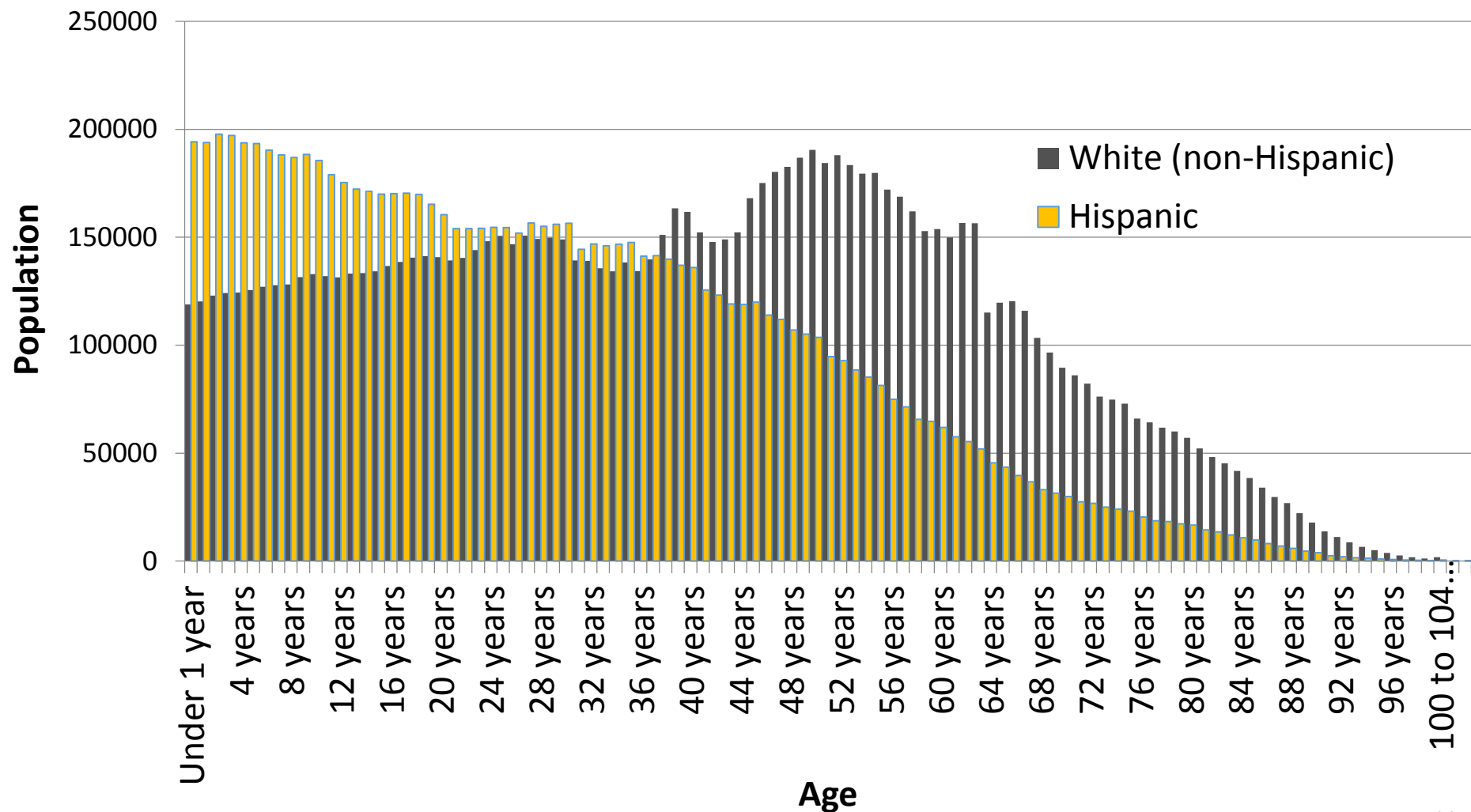


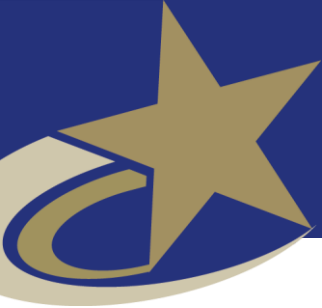
# Percent of the Population by Race and Ethnicity, San Antonio and Texas, 2010



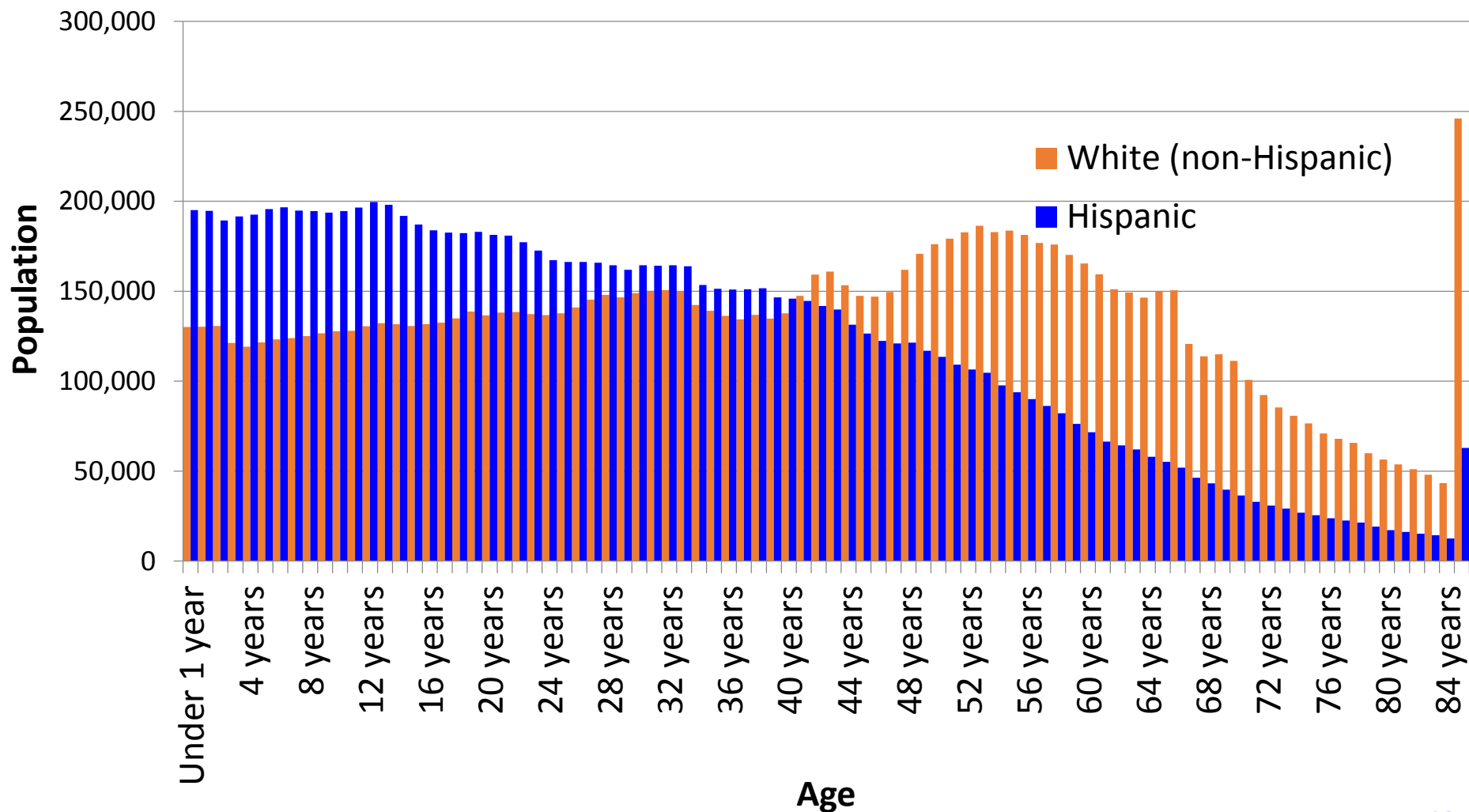


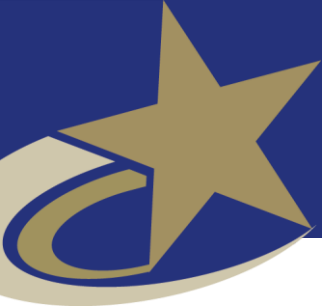
# Texas White (non-Hispanic) and Hispanic Populations by Age, 2010





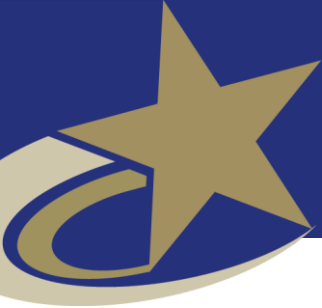
# Bexar County White (non-Hispanic) and Hispanic Populations by Age, 2013





# Housing and Household Characteristics, San Antonio and Texas

<b>Characteristic</b>	<b>San Antonio</b>	<b>Texas</b>
Homeownership rate	55.7%	63.3%
Percent Housing units in multi-unit structures	31.6%	24.2%
Median value - owner-occupied housing units	\$113,800	\$128,900
Per capita money income in past 12 months	\$22,619	\$26,019
Median household income	\$45,722	\$51,900
Persons below poverty level	19.9%	17.6%

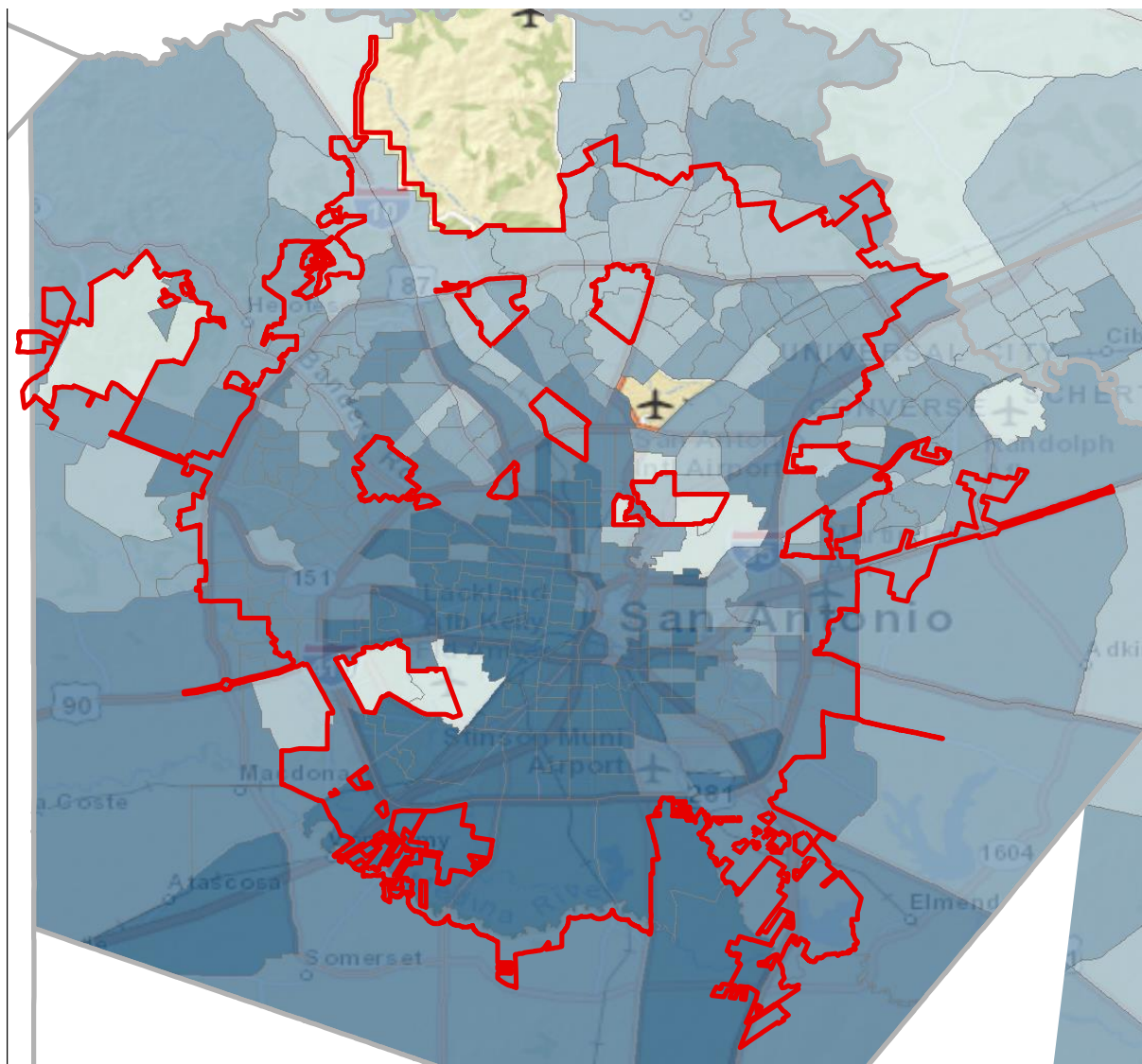
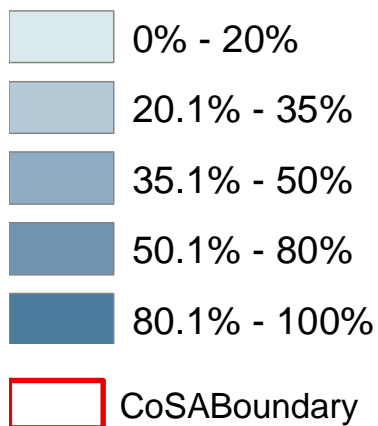
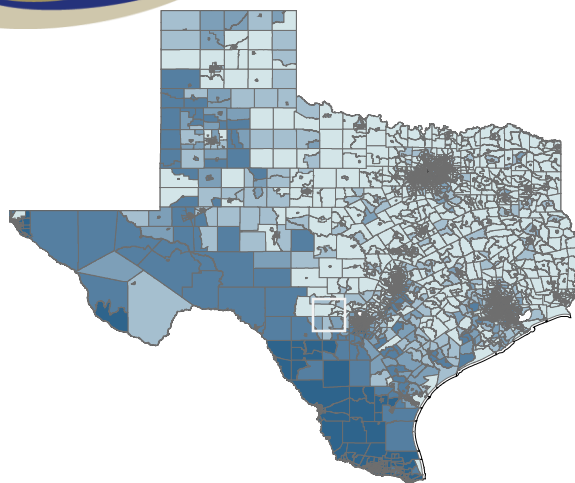


# Population Characteristics, San Antonio and Texas

Characteristic	San Antonio	Texas
Living in same house 1 year & over	80.6%	82.8%
Foreign born persons	14.0%	16.3%
Language other than English spoken at home	45.4%	34.7%
High school graduate or higher, persons age 25+	80.7%	81.2%
Bachelor's degree or higher, persons age 25+	24.6%	26.7%

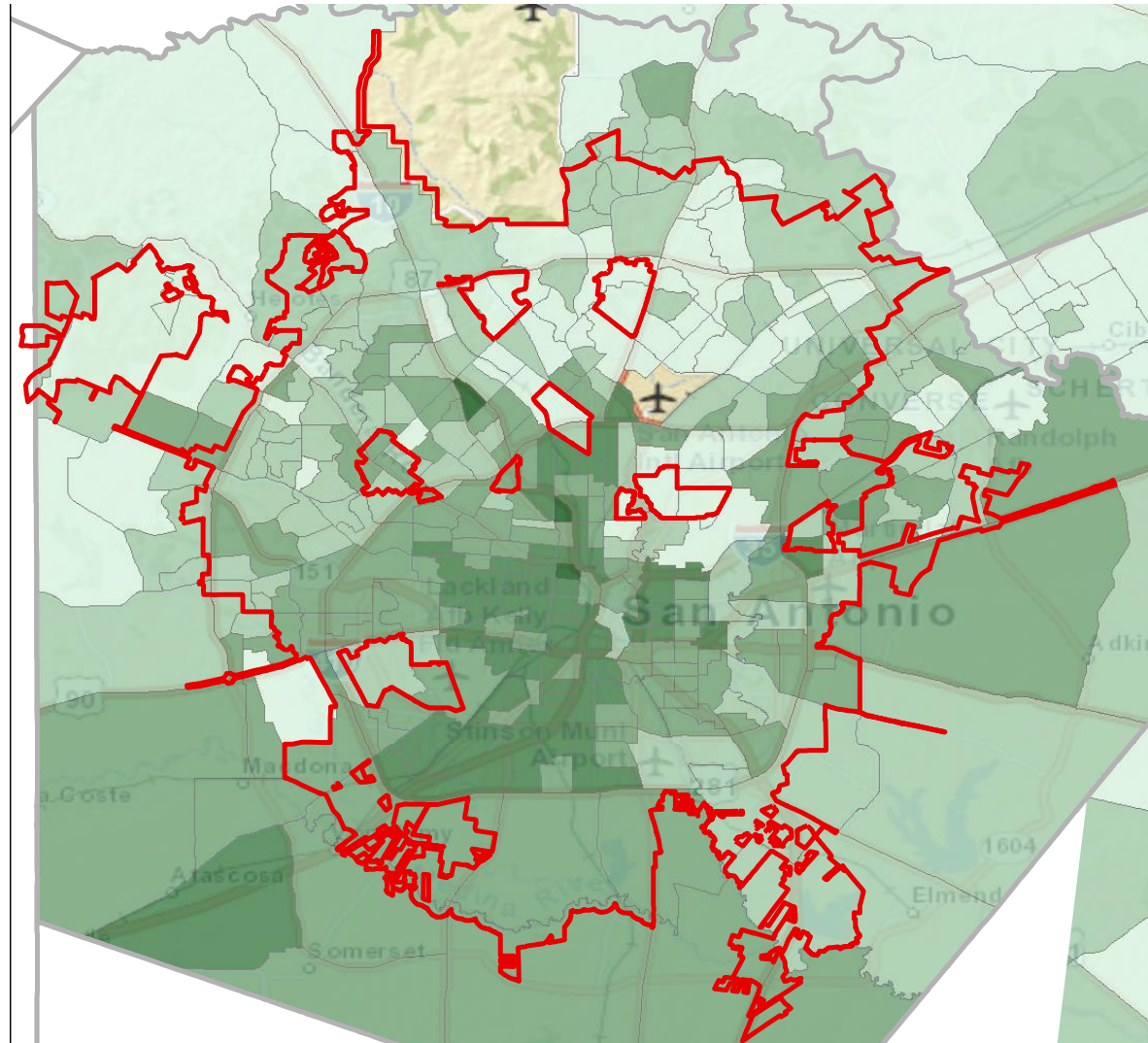
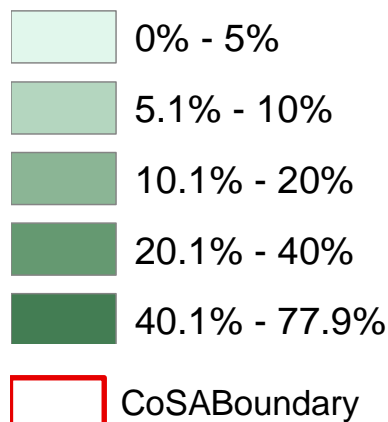
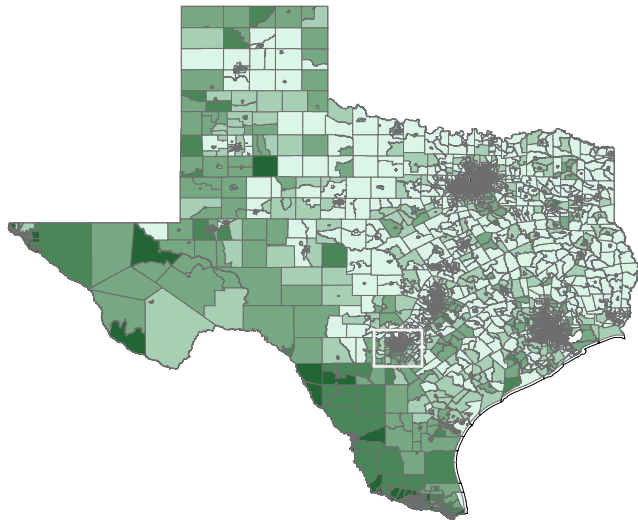


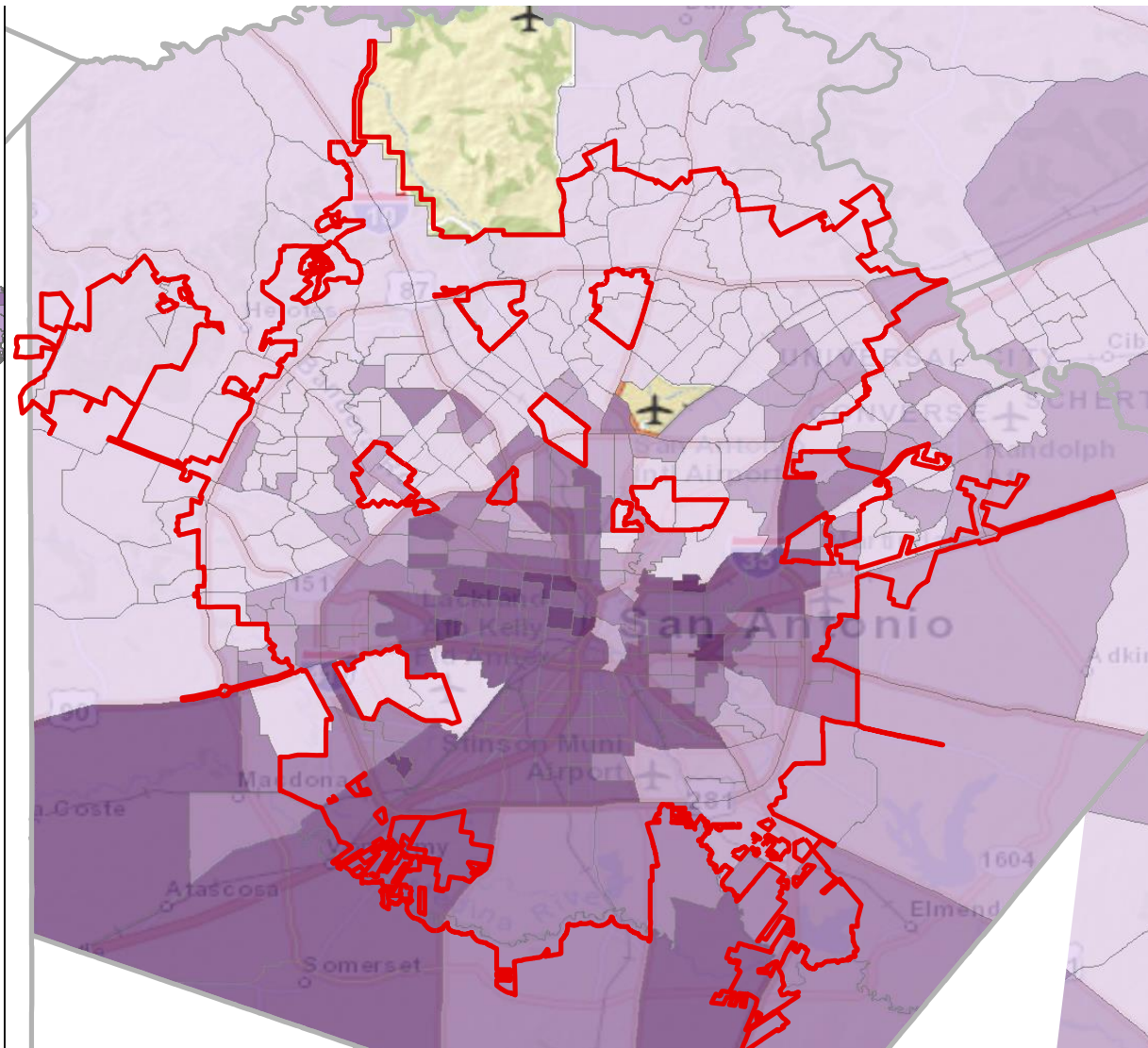
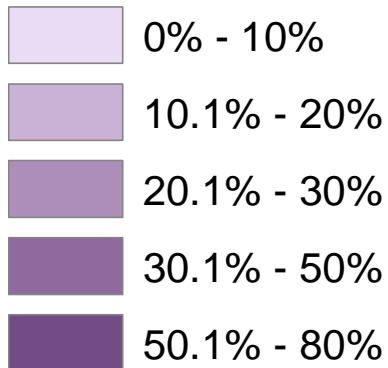
# Percent of population that is Hispanic, Census Tracts, San Antonio, Texas, 2009-2013





# Percent of population speaking a language other than English at home and speak English less than very well, Census Tracts, San Antonio, Texas, 2009-2013

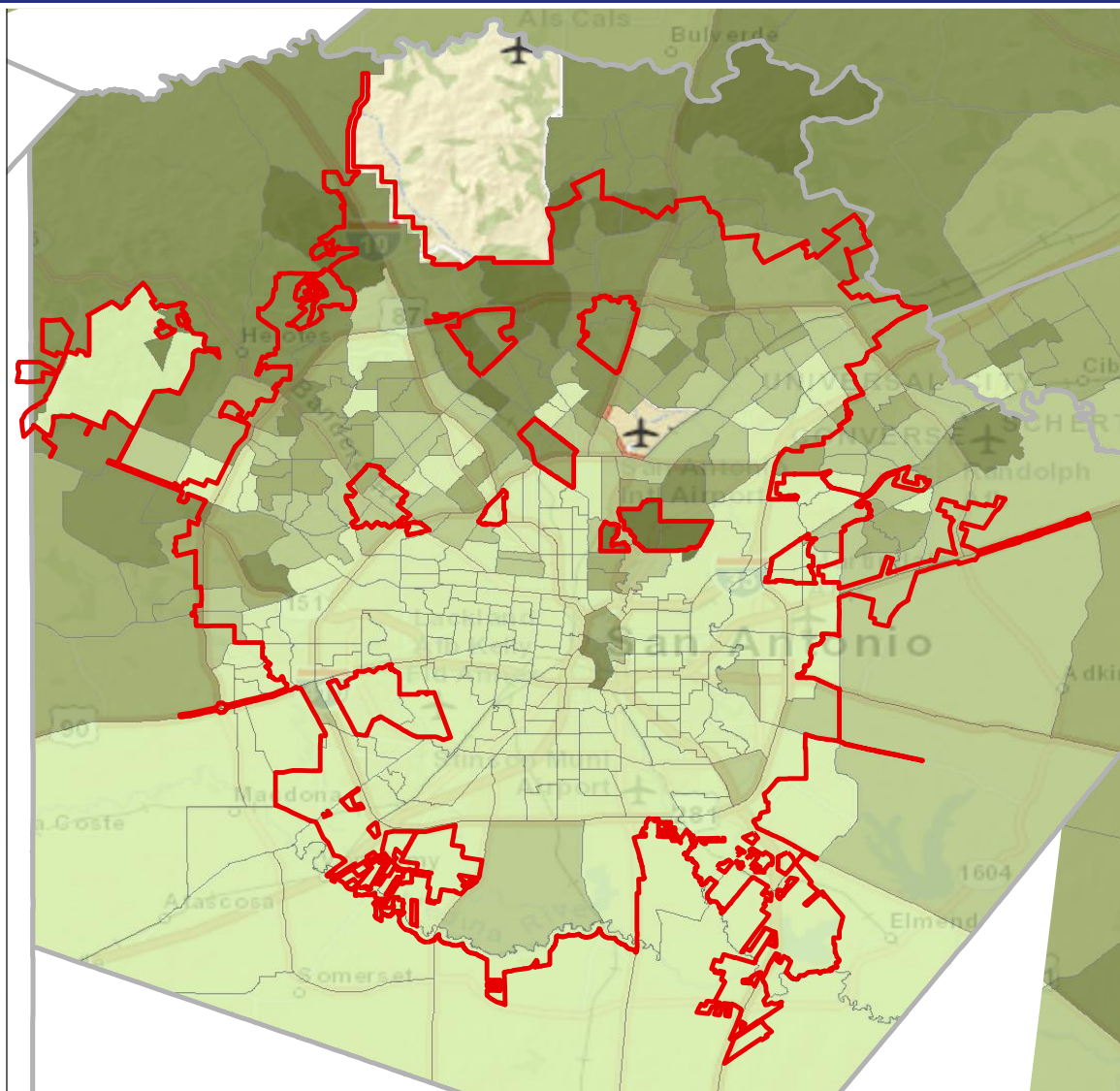
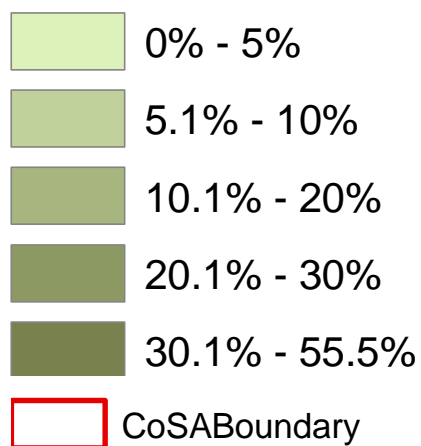
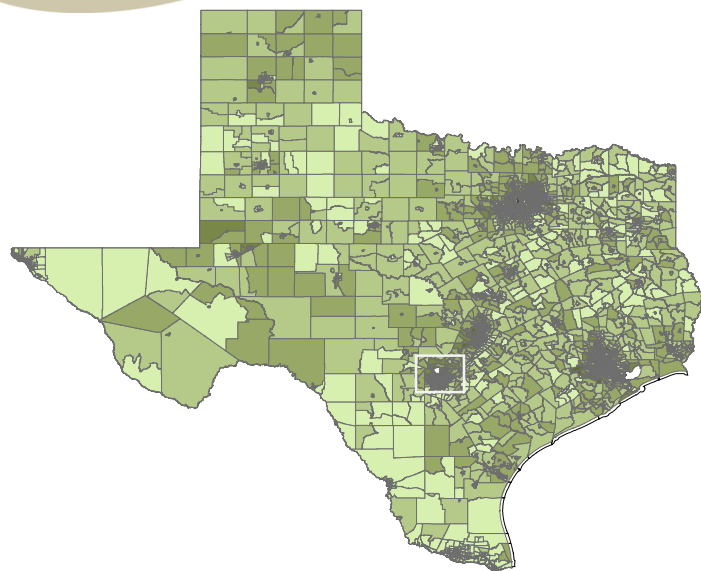


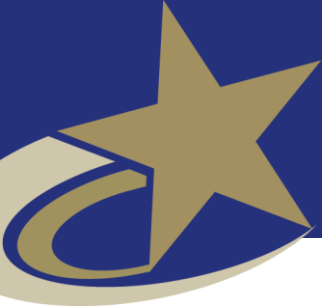


\_\_\_\_\_

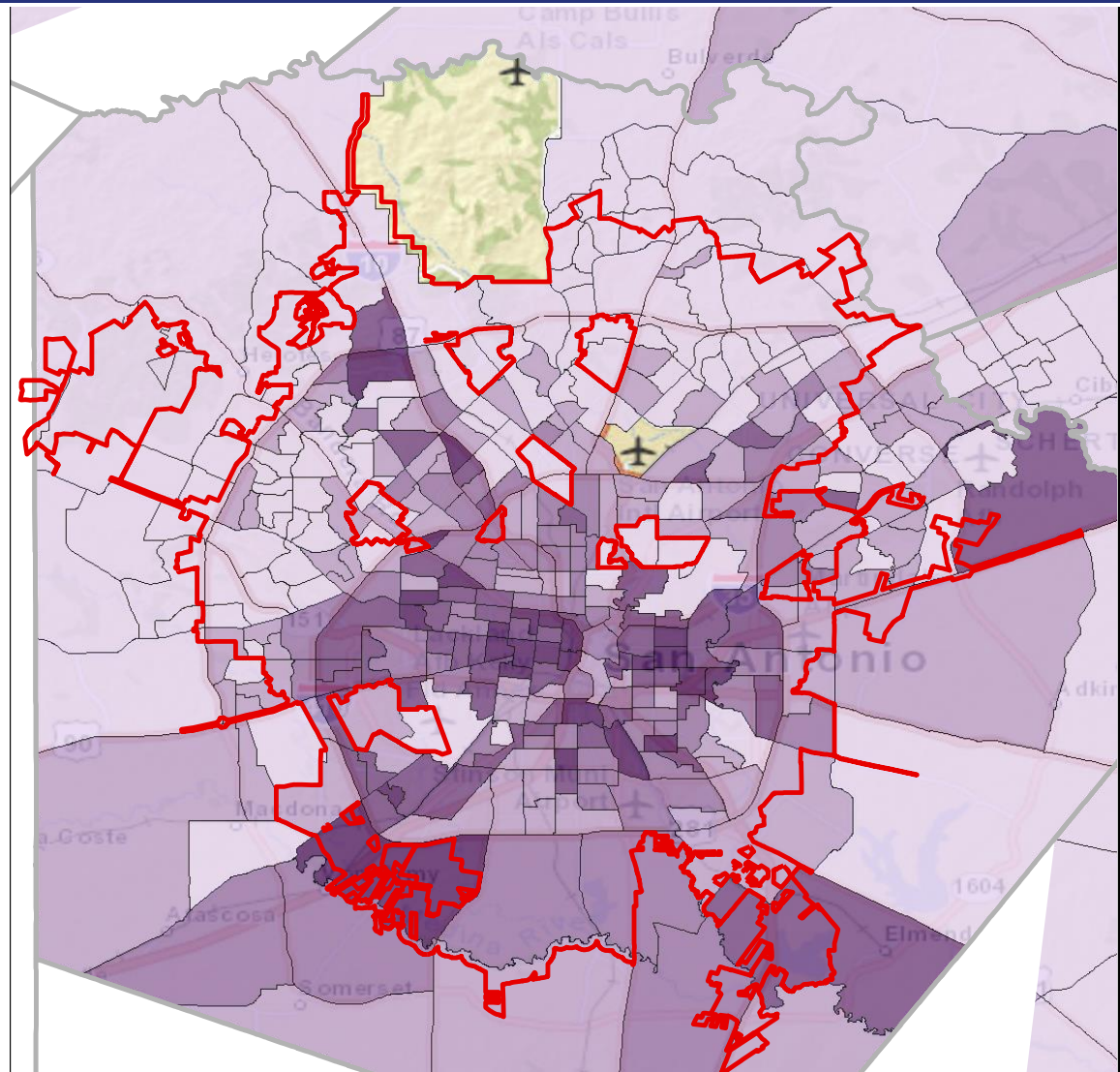
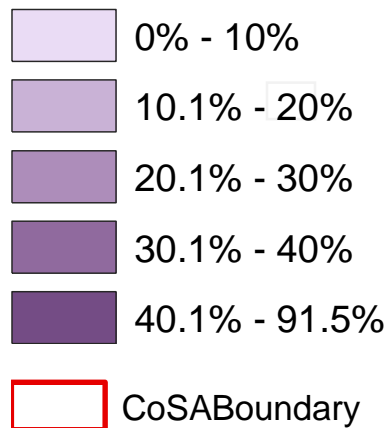


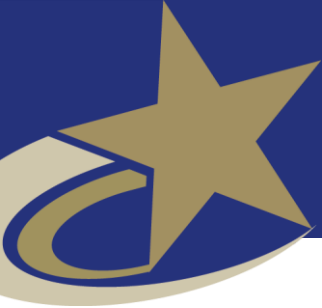
# Percent of population earning \$75,000 per year or more, Census Tracts, San Antonio, Texas, 2009-2013



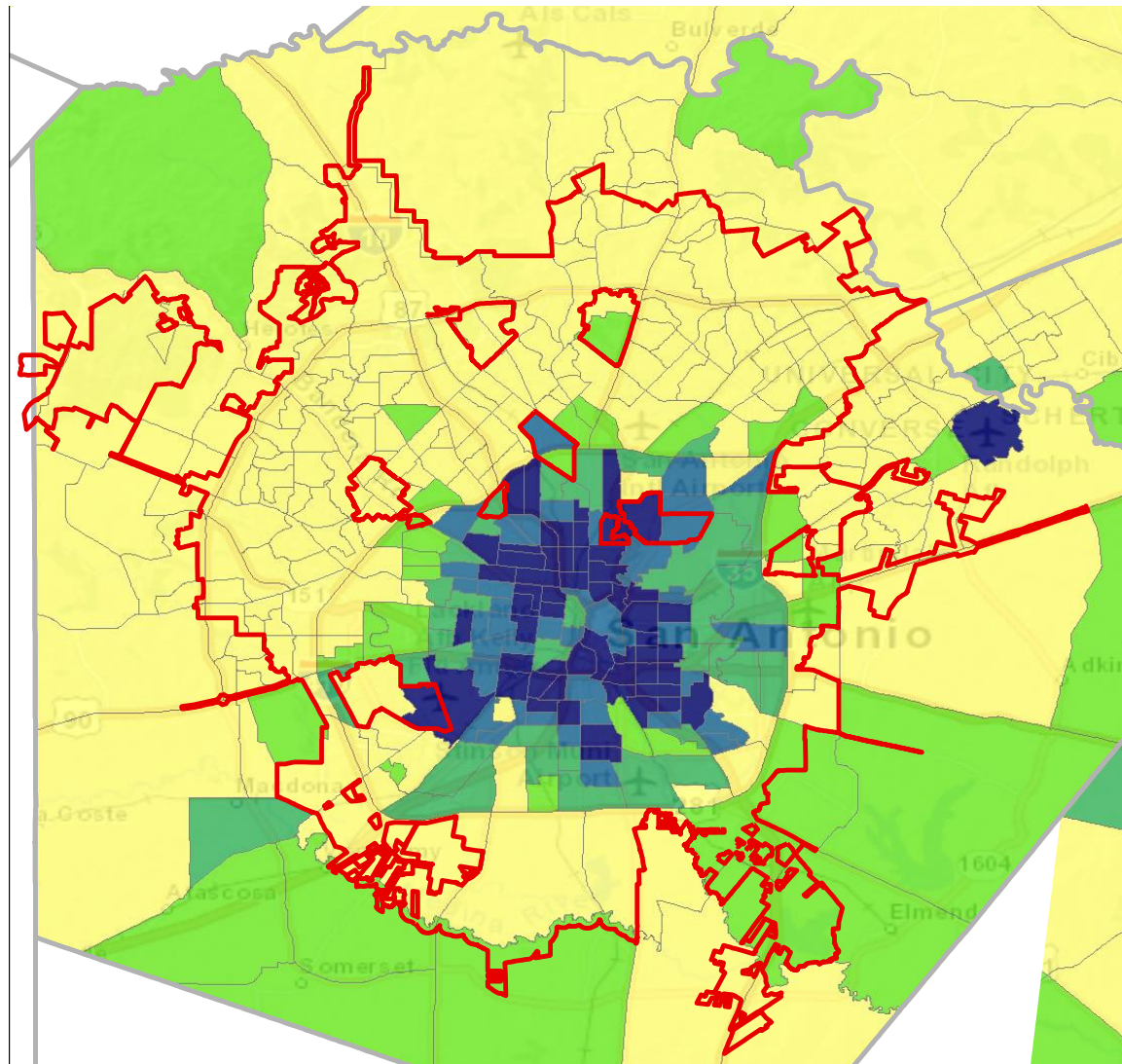
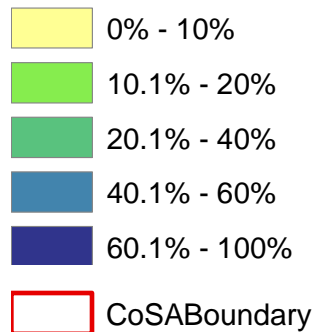


# Percent of population living below poverty, Census Tracts, San Antonio, Texas, 2009-2013



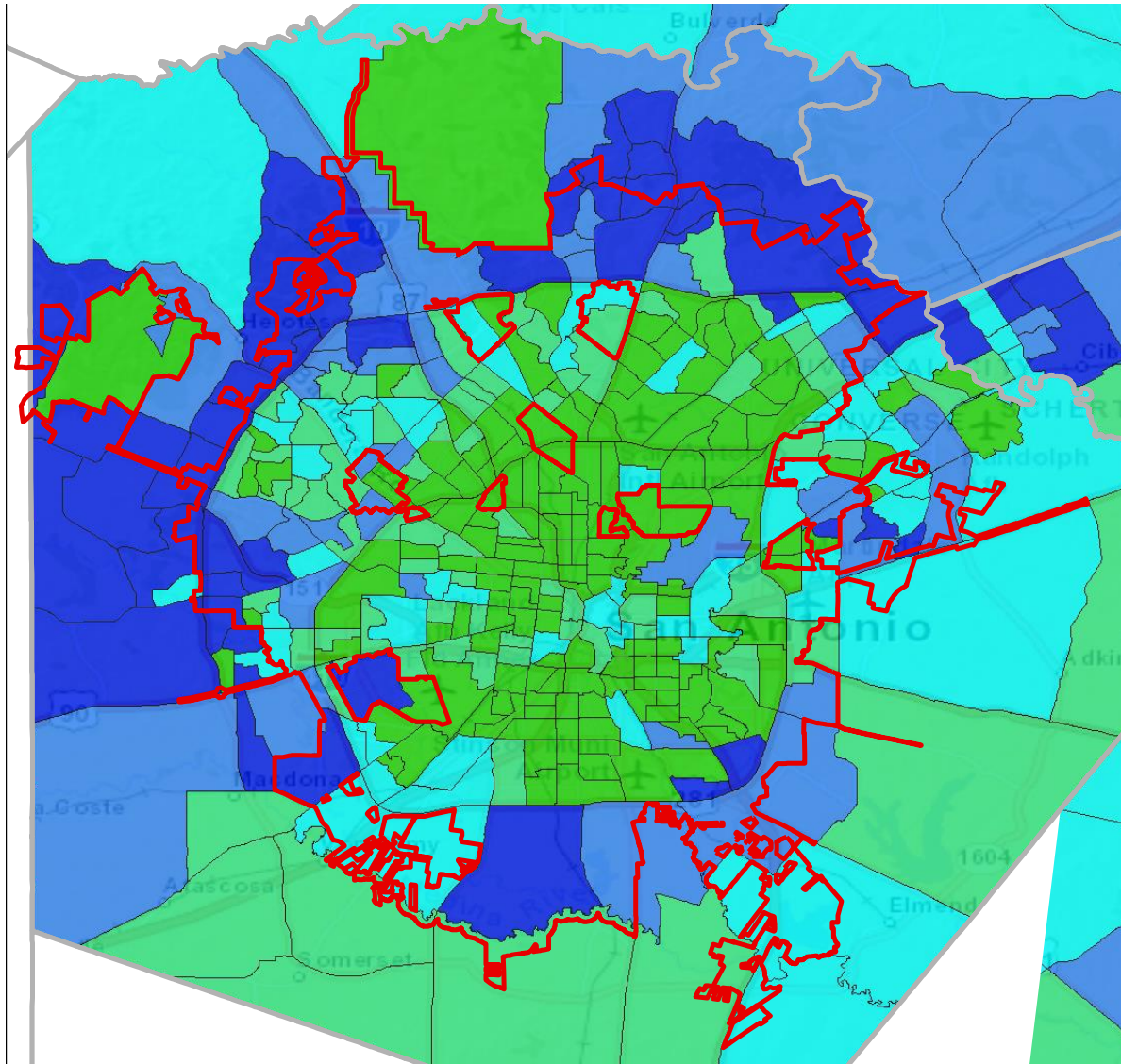
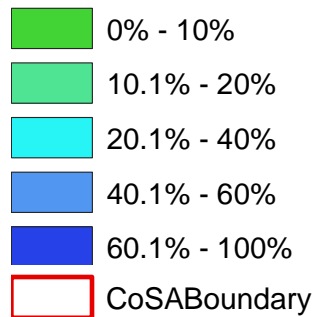


# Percent of Housing Units Build Before 1960, Census Tracts, San Antonio, Texas, 2009-2013



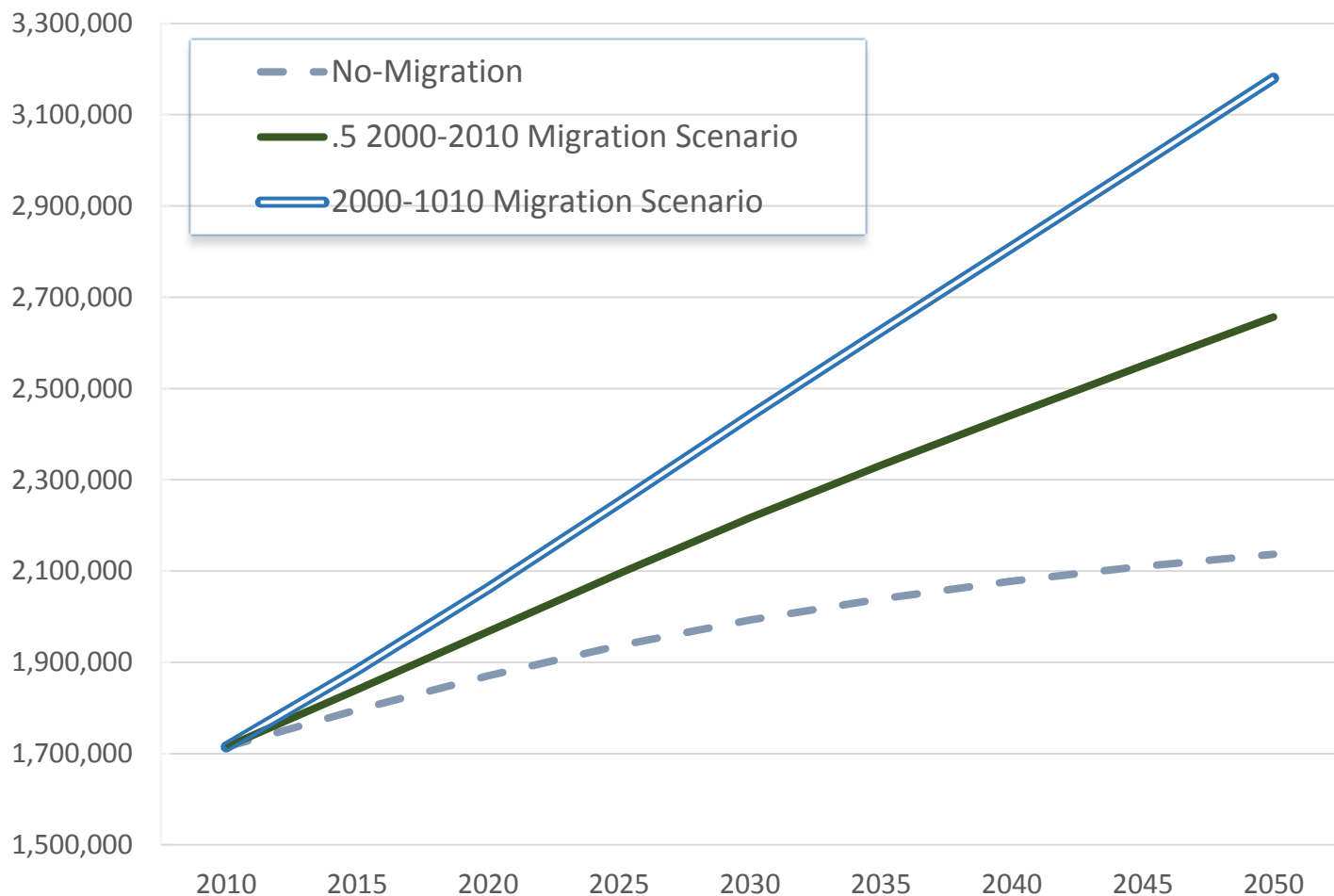


# Percent of Housing Units Build After 1999, Census Tracts, San Antonio, Texas, 2009-2013



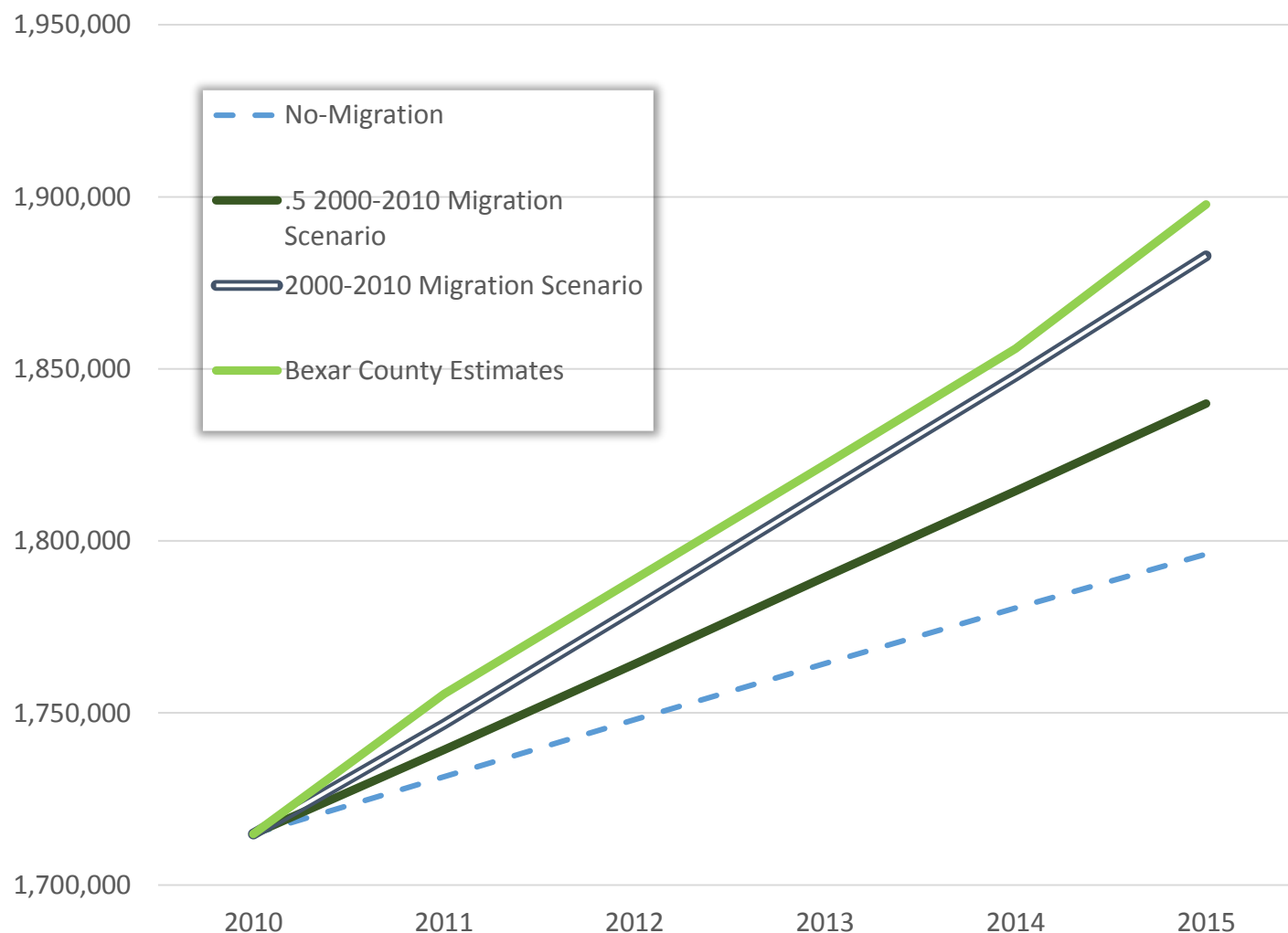


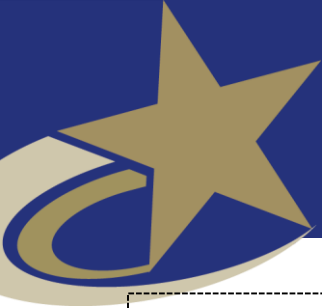
# Projected Population Growth in Bexar County, Texas, 2010-2050



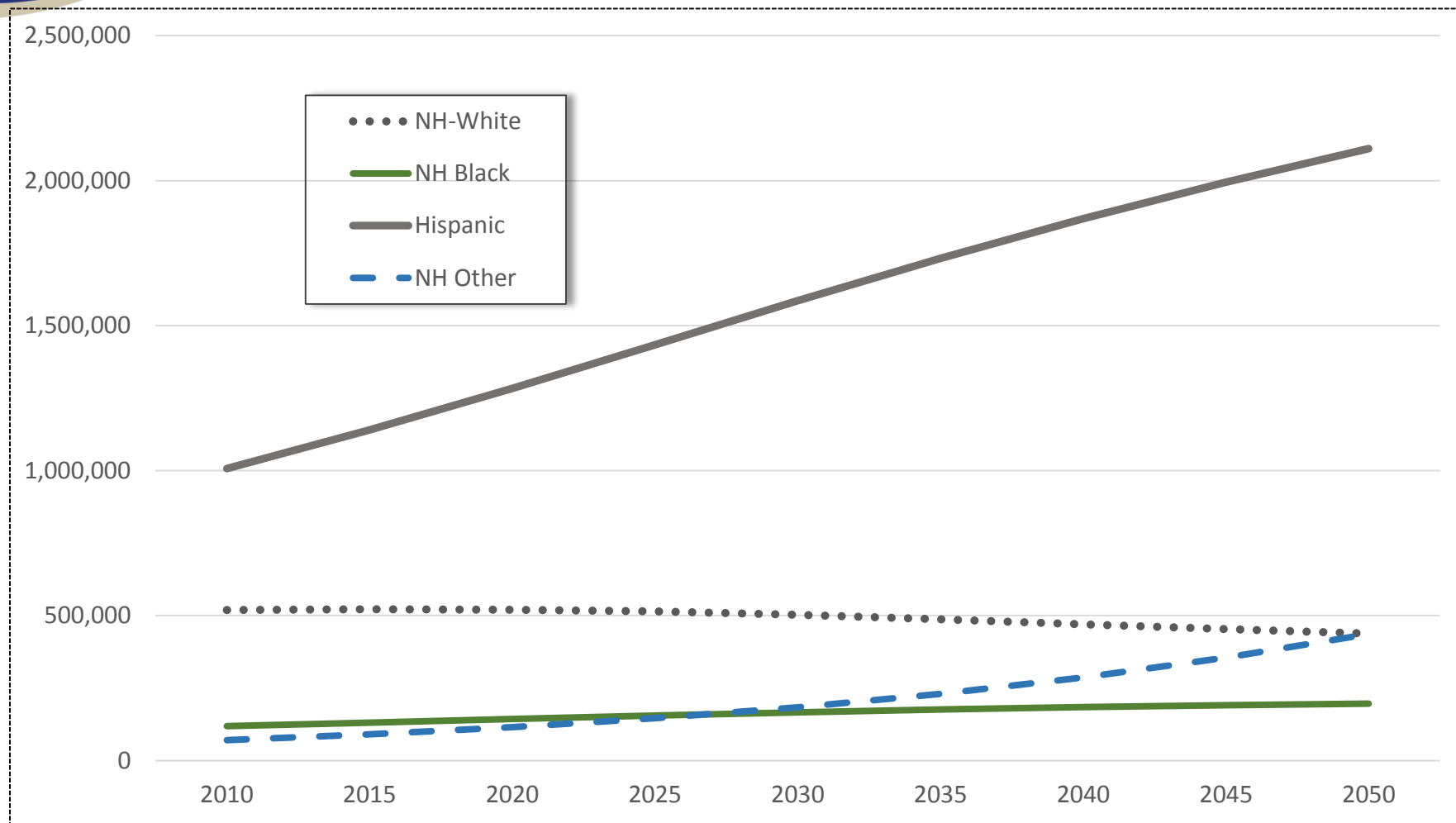


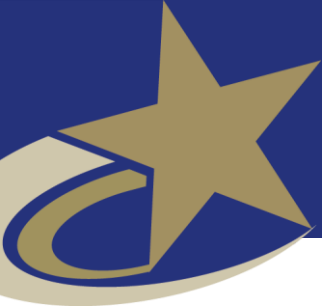
# Projected and Estimated Population in Bexar County, Texas, 2010-2015



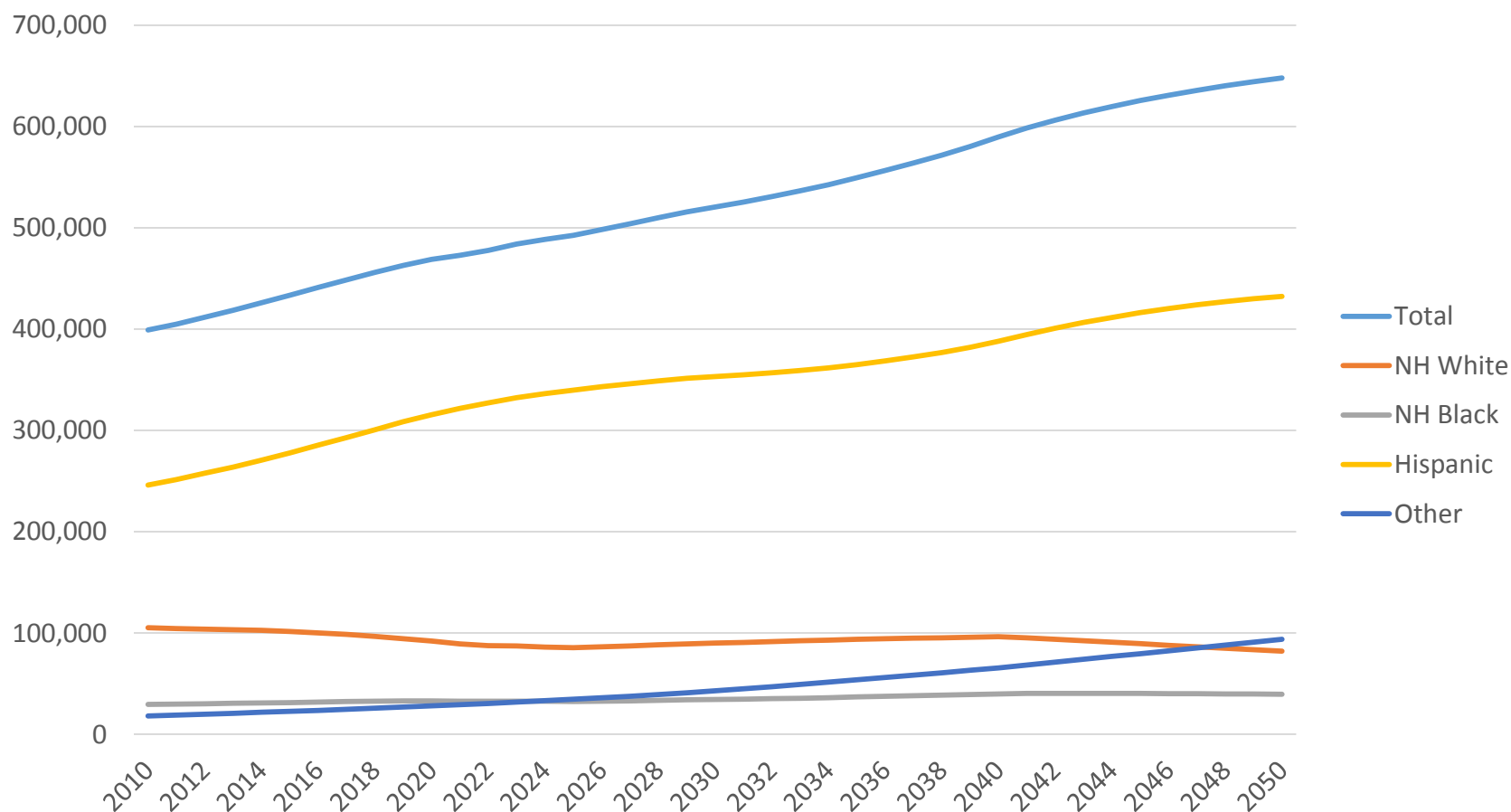


# Projected Racial and Ethnic Percent, Bexar County, Texas, 2010-2050



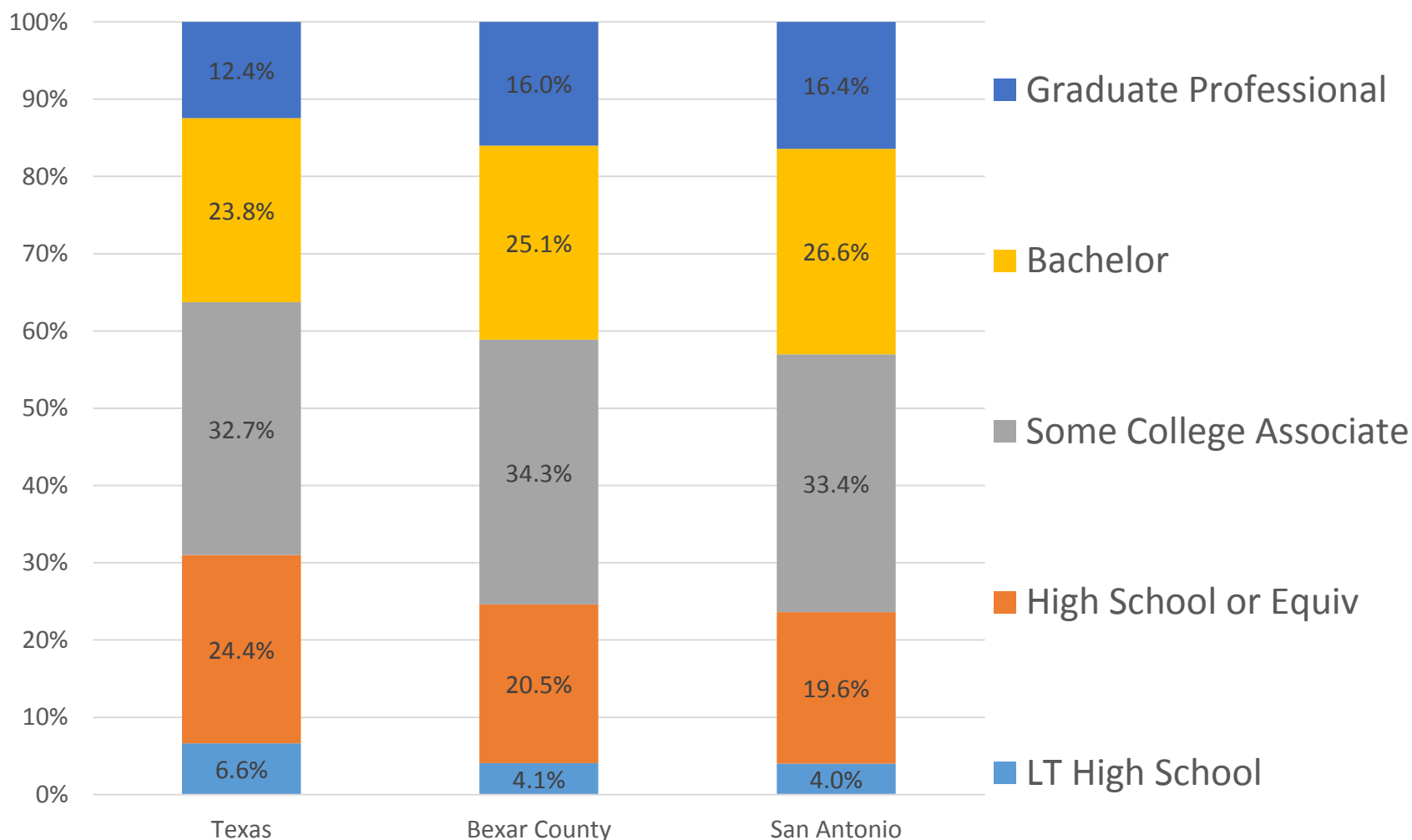


# Projected population of 15-29 year old persons by race/ethnicity, Bexar County, Texas 2010-2015



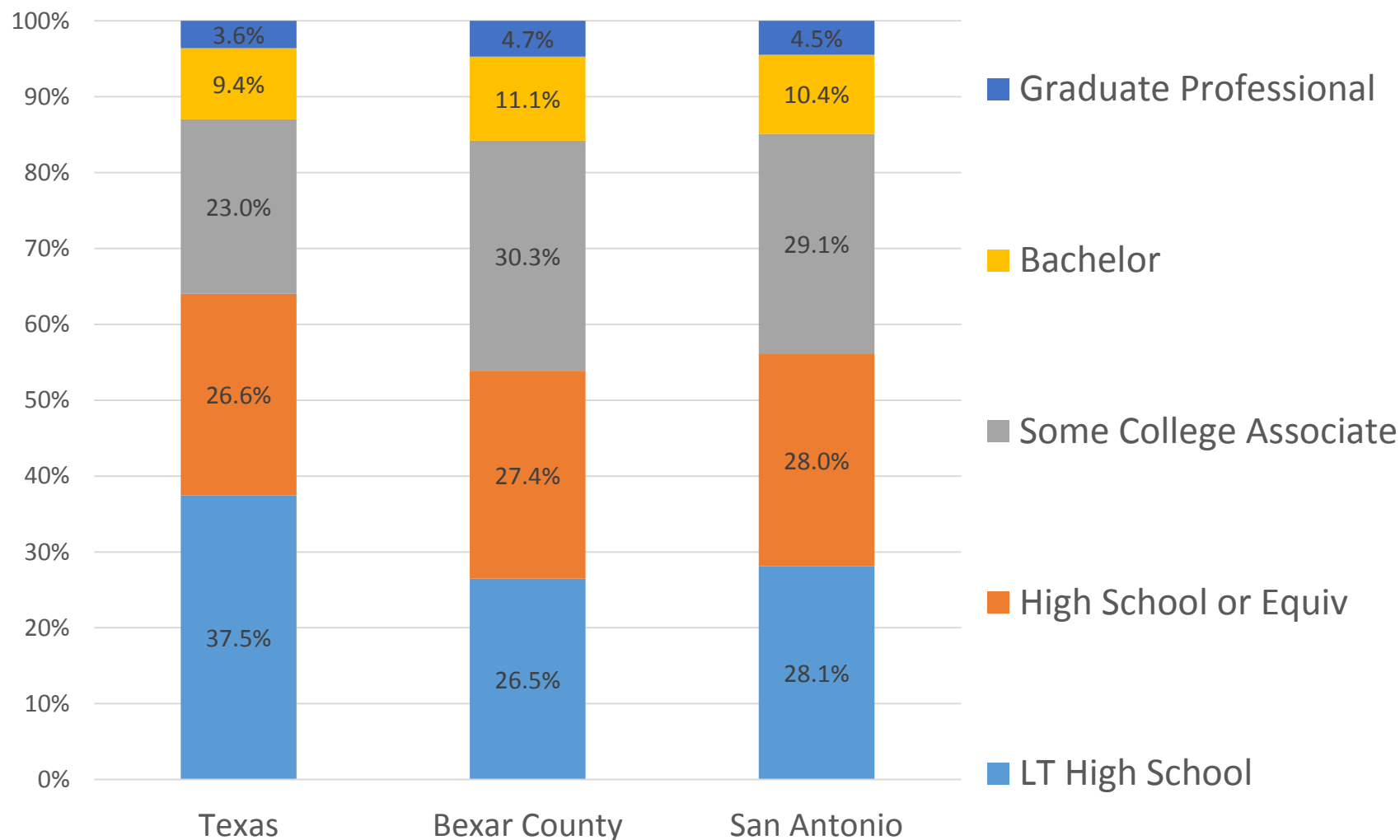


## Educational Attainment of Persons Aged 25 Years and Older, NH White, Texas, Bexar County, San Antonio, 2014



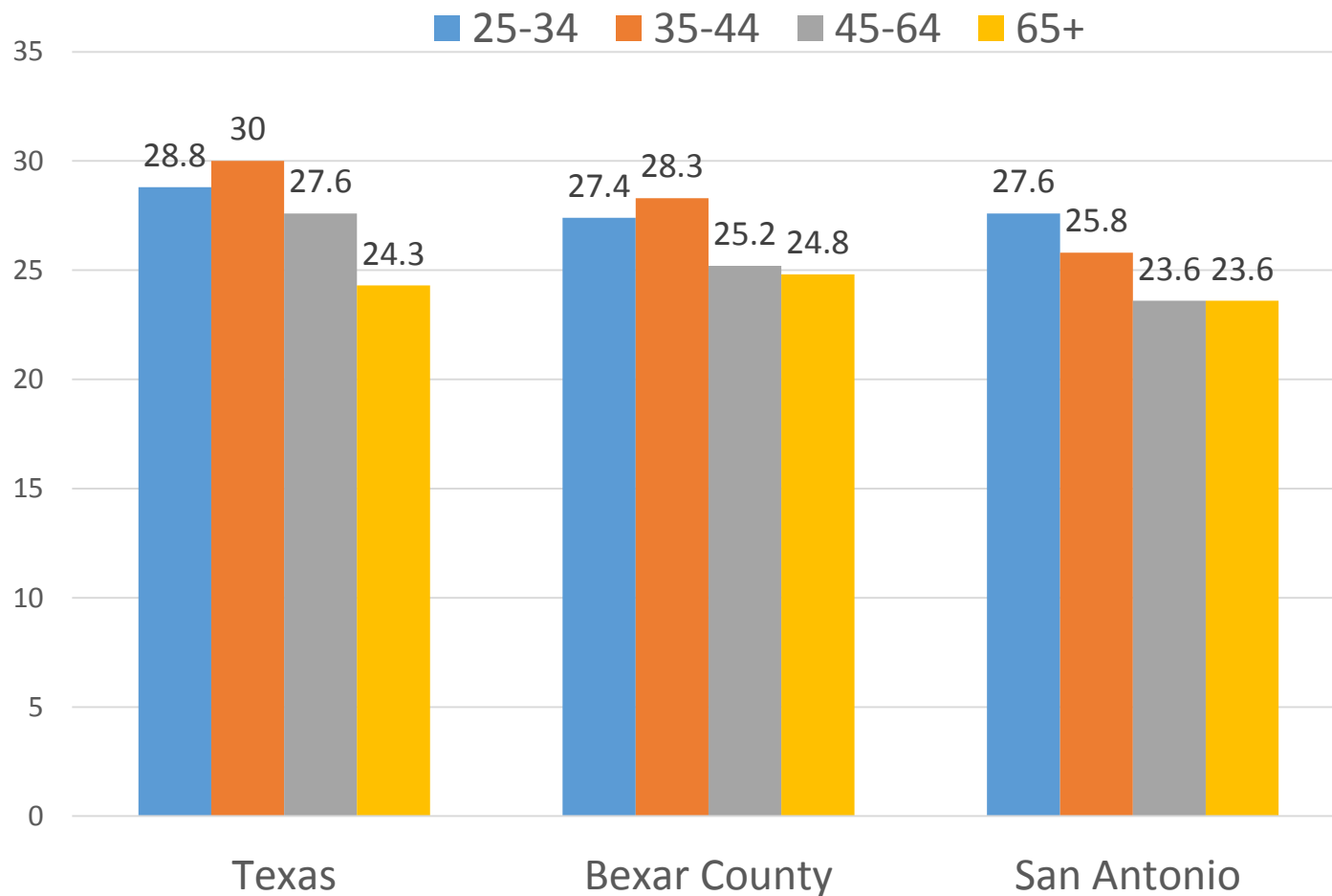


## Educational Attainment of Persons Aged 25 Years and Older, Hispanic for Texas, Bexar County, and San Antonio, 2014



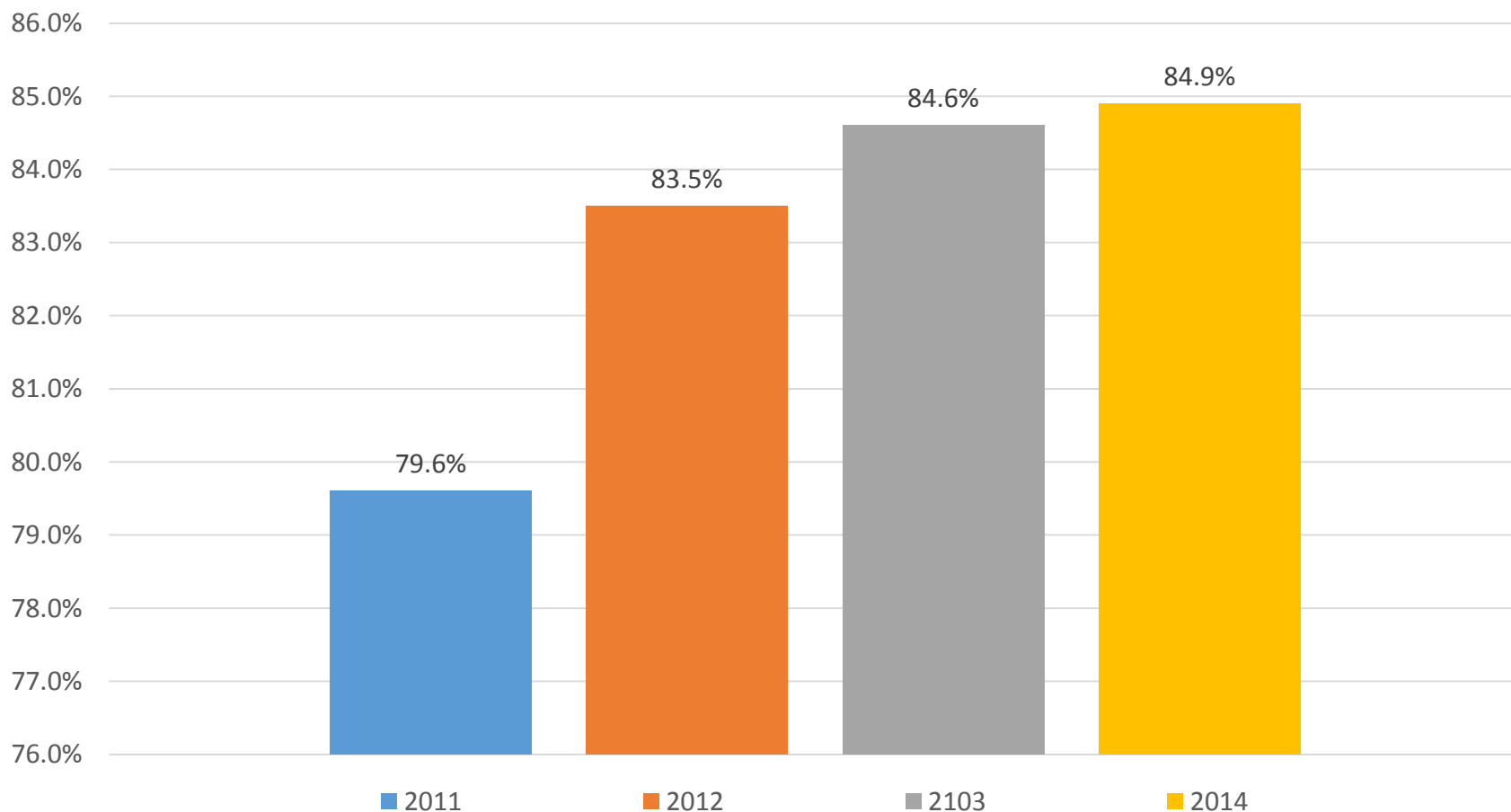


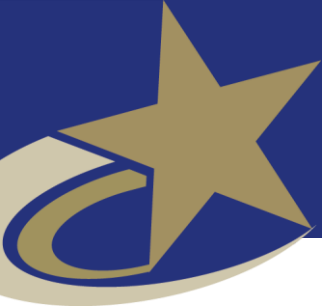
## Percent of Persons by Age Group with at a Bachelors Degree or Higher, Texas, Bexar County, and San Antonio, 2014





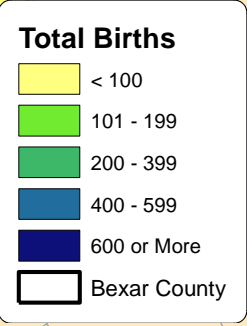
# Percent of Hispanic Students Graduating from Bexar County High Schools by Year, 2011-2014





## Percent of children less than 5 years living in poverty by school district, 2010-2014

San Antonio ISDs	%
Alamo Heights ISD	5.3%
East Central ISD	9.7%
Edgewood ISD	40.9%
Fort Sam Houston ISD	8.8%
Harlandale ISD	62.8%
Judson ISD	8.4%
Lackland ISD	12.6%
North East ISD	12.6%
Northside ISD	1.6%
Randolph ISD	38.6%
San Antonio ISD	29.7%
South San Antonio ISD	27.0%
Somerset ISD	29.8%
Southside ISD	25.5%
Southwest ISD	5.3%



31



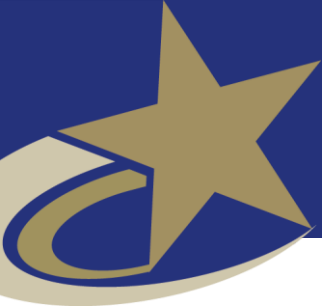


# Births Occurring by School District, Bexar County, 2013

School District	Total Births	Birth rate per 1,000 women aged 15-19	Percent of births to single mothers	Percent of births to mothers with less than HS/GED	Percent of births to mothers with BMI greater than 30	Percent of births that were low birth weight
Alamo Heights	281	3.43	17	6	32	7
Boerne	82	6.67	10	0	30	9
Comal	348	8.67	13	5	33	7
East Central	664	35.66	46	16	30	9
<b>Edgewood</b>	<b>988</b>	<b>60.20</b>	<b>71</b>	<b>39</b>	<b>29</b>	<b>10</b>
Fort Sam Houston	63	7.18	8	6	32	0
Harlandale	<b>916</b>	<b>58.47</b>	<b>68</b>	<b>35</b>	<b>30</b>	<b>9</b>
Judson	19,03	38.53	42	12	28	9
Medina Valley	83	27.52	40	12	29	7
North East	5,289	29.35	39	14	29	9
Northside	8,131	27.41	36	11	29	9
San Antonio	<b>4,910</b>	<b>60.80</b>	<b>65</b>	<b>35</b>	<b>28</b>	<b>10</b>
Schertz-Cibolo-Universal City	97	50.21	53	14	27	10
Somerset	144	55.90	60	24	27	13
<b>South San Antonio</b>	<b>793</b>	<b>62.50</b>	<b>63</b>	<b>29</b>	<b>31</b>	<b>9</b>
Southside	365	52.48	60	25	30	9
Southwest	997	52.80	24	24	28	8

Source: San Antonio Metropolitan Health District, Maternal Health Indicators: 2013 Report, 2014.

Note: In 2013, a total of 26,590 births occurred in Bexar County.



# Fitness Gram Scores, Bexar County School Districts, 2013-14

District	Total Students Tested	Total at Unhealthy Weight	Percent at Unhealthy Weight
Edgewood	9,820	5,608	57.2
Judson	45,375	21,407	47.2
North East	79,976	31,580	39.5
San Antonio	46,552	25,154	54
South San Antonio	5,261	2,830	53.8
Somerset	1,981	1,059	53.5
<b>TOTAL OF BEXAR COUNTY</b>	<b>247,062</b>	<b>87,638</b>	<b>35.5</b>

In 2013-2014 school year: a Healthy Weight equals BMIs ranging from 13.8 to 24.9 in boys and from 13.5-24.9 in girls (across age and from the low to the high end of the Healthy Fitness Zone).

FITNESSGRAM includes data for students enrolled in kindergarten through college, but is limited by the grades serviced in each district, respectively.

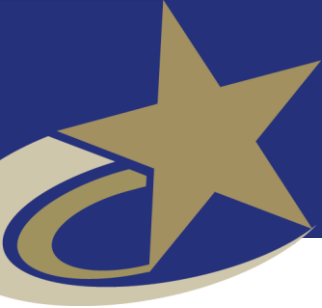
FERPA masked scores, which occur when there are fewer than 5 students in any category, have not been counted in these calculations.

Bexar County total Fitnessgram scores contain only the districts listed in the table.

Fitnessgram suggests that their scores not be compared across years, because of differences in methodology.

Source: Fitnessgram for Bexar County and Selected Bexar County ISDs, 2013-2014





# Contact

Lloyd Potter, Ph.D.

Office: (210) 458-6530

Email: [Lloyd.Potter@utsa.edu](mailto:Lloyd.Potter@utsa.edu)

Internet: [demographics.texas.gov](http://demographics.texas.gov)



@TexasDemography