

# Demographic Characteristics and Trends: Texas and the Metroplex Area

TEX-21



Texas  
Demographic  
Center



# States with Most Population Growth, 2010 to 2020



	<b>2010 Population</b>	<b>2020 Population</b>	<b>Numeric Change 2010-2020</b>	<b>Percent Change 2010-2020</b>
United States	308,745,538	331,449,281	22,703,743	7.4%
Texas	25,145,561	29,145,505	3,999,944	15.9%
Florida	18,801,310	21,538,187	2,736,877	14.6%
California	37,253,956	39,538,223	2,284,267	6.1%
Georgia	9,687,653	10,711,908	1,024,255	10.6%
Washington	6,724,540	7,705,281	980,741	14.6%
North Carolina	9,535,483	10,439,388	903,905	9.5%
New York	19,378,102	20,201,249	823,147	4.2%
Arizona	6,392,017	7,151,502	759,485	11.9%
Colorado	5,029,196	5,773,714	744,518	14.8%
Virginia	8,001,024	8,631,393	630,369	7.9%
Tennessee	6,346,105	6,910,840	564,735	8.9%
Utah	2,763,885	3,271,616	507,731	18.4%

# States With an Undercount or Overcount

## Undercount

State	Net coverage error rate	
	Rate	90 percent confidence interval
Arkansas	-5.04	-8.68 to -1.40
Florida	-3.48	-4.98 to -1.98
Illinois	-1.97	-3.43 to -0.51
Mississippi	-4.11	-6.79 to -1.43
Tennessee	-4.78	-7.26 to -2.30
Texas	-1.92	-3.27 to -0.57

## Overcount

State	Net coverage error rate	
	Rate	90 percent confidence interval
Delaware	5.45	0.81 to 10.09
Hawaii	6.79	4.03 to 9.55
Massachusetts	2.24	0.50 to 3.98
Minnesota	3.84	2.24 to 5.44
New York	3.44	1.89 to 4.99
Ohio	1.49	0.39 to 2.59
Rhode Island	5.05	2.70 to 7.40
Utah	2.59	0.57 to 4.61

May 19, 2022

Texas had an undercount of -0.97 in 2010 (not statistically different from 0)



# Percent Net Coverage Error by Race and Hispanic Origin: 2010 and 2020

Race or Hispanic Origin	2010	2020	Is there a significant difference between 2020 and 2010?
Total	0.01	-0.24	
Race alone or in combination			
White	0.54*	0.66*	No
<b>Non-Hispanic White alone</b>	<b>0.83*</b>	<b>1.64*</b>	<b>Yes</b>
Black or African American	-2.06*	<b>-3.30*</b>	No
<b>Asian</b>	<b>0.00</b>	<b>2.62*</b>	<b>Yes</b>
American Indian or Alaska Native	-0.15	-0.91*	No
On Reservation	-4.88*	-5.64*	No
American Indian Areas Off Reservation	3.86	3.06	No
Balance of the United States	0.05	-0.86*	No
Native Hawaiian or Other Pacific Islander	-1.02	1.28	No
<b>Some Other Race</b>	<b>-1.63*</b>	<b>-4.34*</b>	<b>Yes</b>
<b>Hispanic or Latino</b>	<b>-1.54*</b>	<b>-4.99*</b>	<b>Yes</b>

\*Net coverage error is statistically significantly different from 0.



# States with Most Population Growth, 2020 to 2022



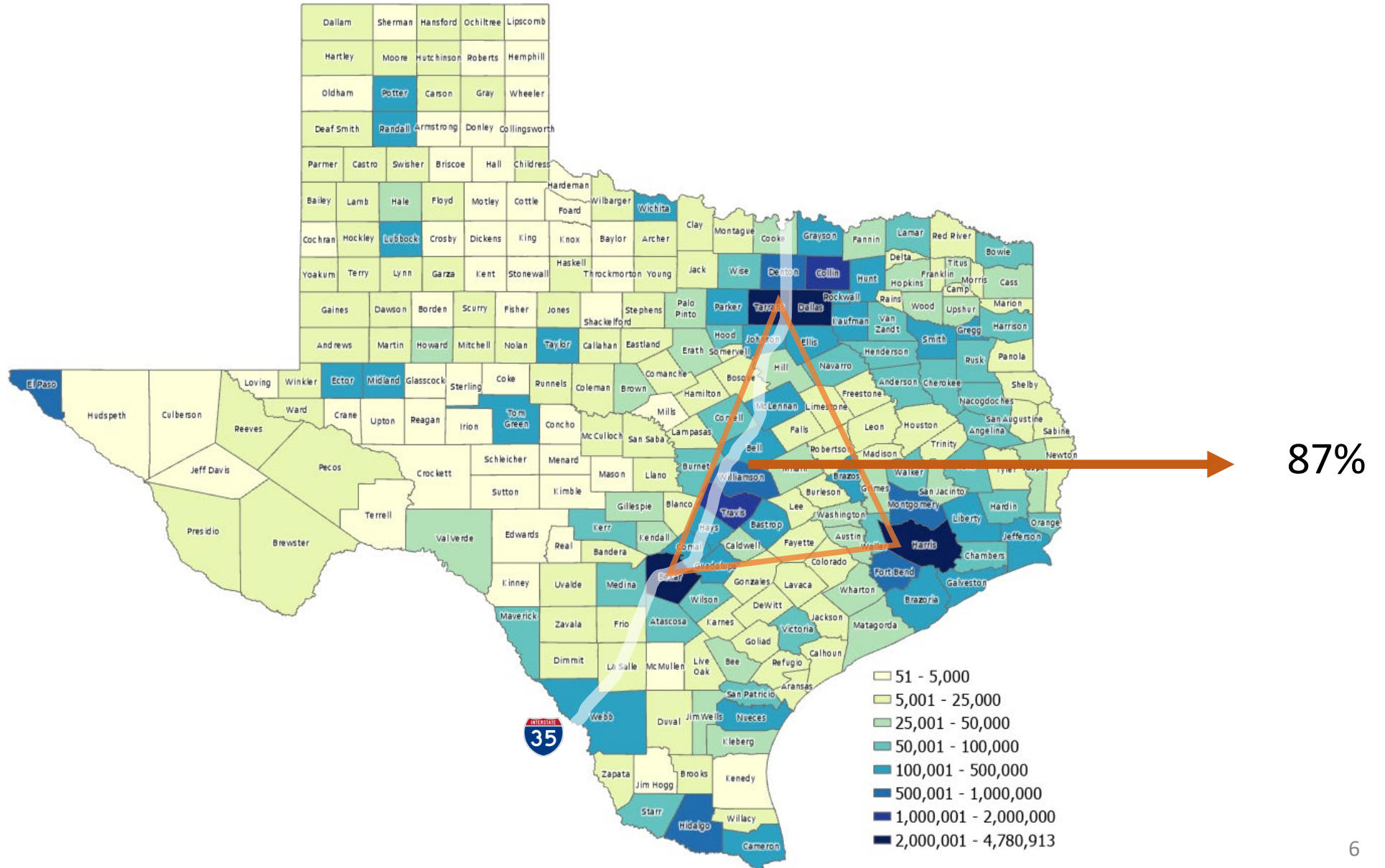
## Population Estimate (as of July 1)

Geographic Area	2020	2021	2022	Change 21-22	Rank Change 21-22	Pct. Change 21-22	Rank Pct. Change 21-22
United States	331,511,512	332,031,554	333,287,557	1,256,003		0.4%	
<b>Texas</b>	<b>29,232,474</b>	<b>29,558,864</b>	<b>30,029,572</b>	<b>470,708</b>	<b>1</b>	<b>1.6%</b>	<b>4</b>
Florida	21,589,602	21,828,069	22,244,823	416,754	2	1.9%	1
North Carolina	10,449,445	10,565,885	10,698,973	133,088	3	1.3%	9
Georgia	10,729,828	10,788,029	10,912,876	124,847	4	1.2%	12
Arizona	7,179,943	7,264,877	7,359,197	94,320	5	1.3%	8
South Carolina	5,131,848	5,193,266	5,282,634	89,368	6	1.7%	3
Tennessee	6,925,619	6,968,351	7,051,339	82,988	7	1.2%	11
Washington	7,724,031	7,740,745	7,785,786	45,041	8	0.6%	16
Utah	3,283,785	3,339,113	3,380,800	41,687	9	1.2%	10
Idaho	1,849,202	1,904,314	1,939,033	34,719	10	1.8%	2

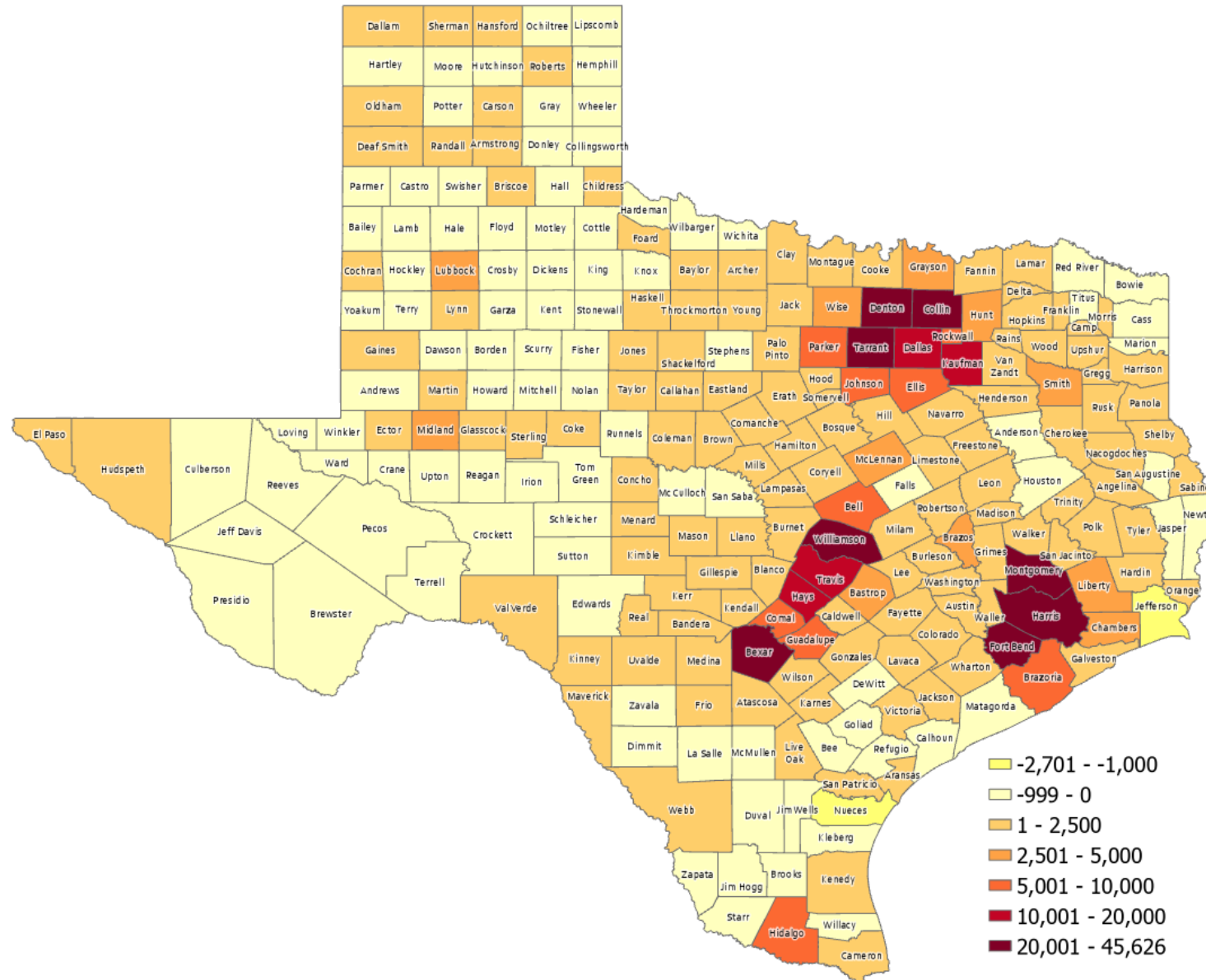
'20-'21 -> **902**  
new Texans per day

'21-'22 -> **1,290**  
new Texans per day

# 2022 Estimated Population, Texas Counties



# Estimated Numeric Change, Texas Counties, 2021-2022



95 of Texas counties lost population

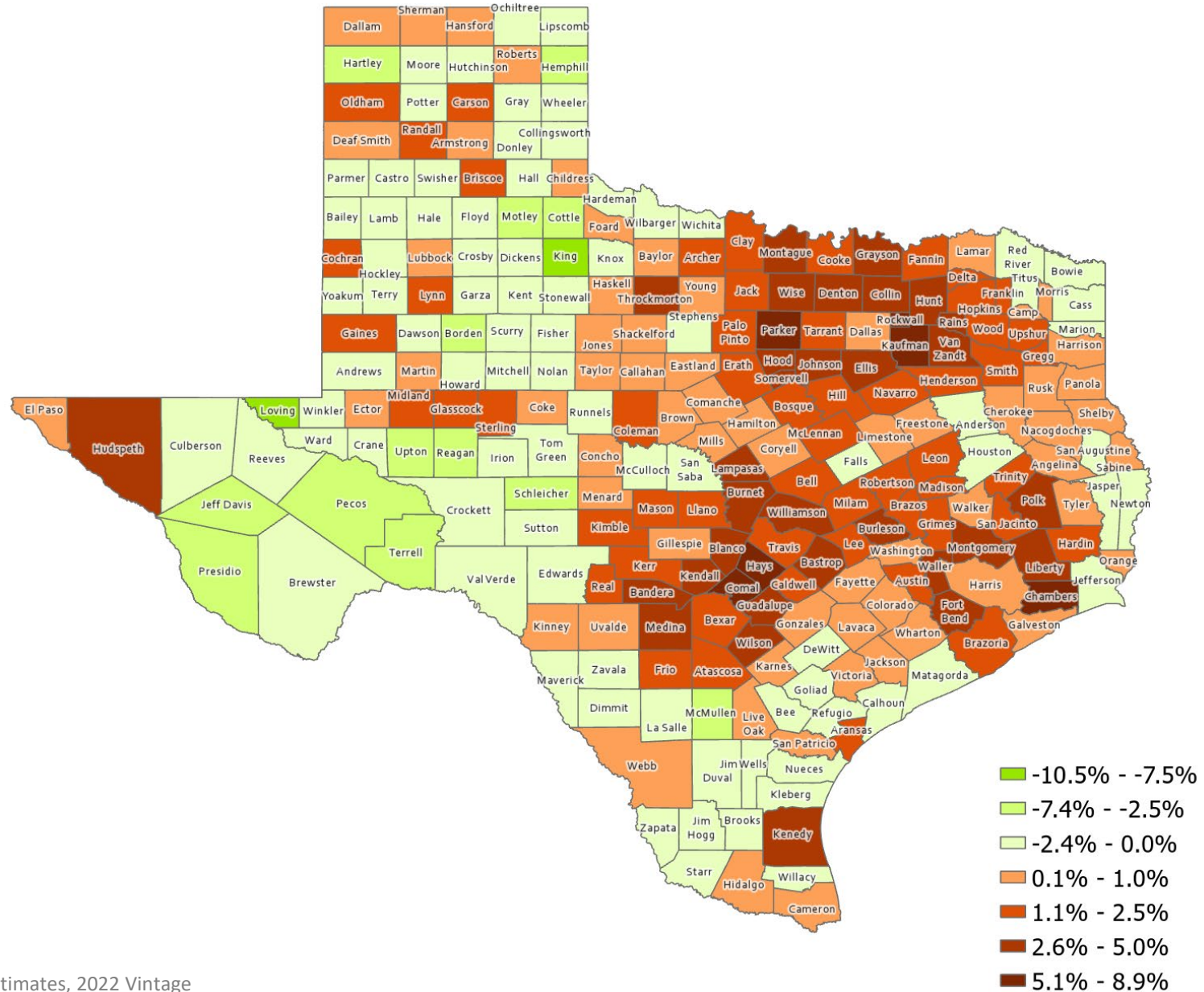
# Top Counties for Numeric Growth in Texas, 2021-2022



County	US Rank	2022 Population Estimate	Population Change 2021-2022	Percent of Change from Natural Increase	Percent of Change from International Migration	Percent of Change from Domestic Migration
Harris	2	4,780,913	45,626	63.6%	78.7%	-42.2%
<b>Collin</b>	<b>3</b>	<b>1,158,696</b>	<b>44,246</b>	<b>13.9%</b>	<b>17.8%</b>	<b>68.3%</b>
<b>Denton</b>	<b>4</b>	<b>977,281</b>	<b>33,424</b>	<b>16.7%</b>	<b>10.8%</b>	<b>72.5%</b>
Fort Bend	7	889,146	29,022	15.3%	23.1%	61.6%
Bexar	9	2,059,530	28,635	27.7%	18.3%	54.1%
Montgomery	10	678,490	28,229	10.3%	7.2%	82.5%
Williamson	12	671,418	26,967	13.6%	8.0%	78.4%
<b>Tarrant</b>	<b>13</b>	<b>2,154,595</b>	<b>25,193</b>	<b>39.6%</b>	<b>32.0%</b>	<b>28.3%</b>
Travis	20	1,326,436	17,892	47.4%	39.8%	12.9%
<b>Kaufman</b>	<b>29</b>	<b>172,366</b>	<b>14,150</b>	<b>6.0%</b>	<b>1.1%</b>	<b>92.9%</b>
Hays	36	269,225	13,160	11.1%	3.7%	85.3%
<b>Dallas</b>	<b>38</b>	<b>2,600,840</b>	<b>12,886</b>	<b>115.7%</b>	<b>128.5%</b>	<b>-144.2%</b>
Comal	48	184,642	9,751	0.5%	0.2%	99.3%
Brazoria	50	388,181	9,323	16.2%	9.2%	74.6%
<b>Ellis</b>	<b>52</b>	<b>212,182</b>	<b>9,075</b>	<b>8.8%</b>	<b>1.8%</b>	<b>89.3%</b>
<b>Parker</b>	<b>53</b>	<b>165,834</b>	<b>8,868</b>	<b>2.7%</b>	<b>1.3%</b>	<b>96.0%</b>



# Estimated Percent Change, Texas Counties, 2021-2022





# Top Counties for Percent Growth in Texas, 2021-2022\*



County	US Rank	2022 Population Estimate	Population Change 2021-2022	Percent Population Change 2021-2022	Percent of Population Change from Natural Increase	Percent of Population Change from International Migration	Percent of Population Change from Domestic Migration
<b>Kaufman</b>	<b>1</b>	<b>172,366</b>	<b>14,150</b>	<b>8.9%</b>	<b>6.0%</b>	<b>1.1%</b>	<b>92.9%</b>
<b>Rockwall</b>	<b>4</b>	<b>123,208</b>	<b>6,659</b>	<b>5.7%</b>	<b>6.6%</b>	<b>2.6%</b>	<b>90.7%</b>
Comal	5	184,642	9,751	5.6%	0.5%	0.2%	99.3%
<b>Parker</b>	<b>6</b>	<b>165,834</b>	<b>8,868</b>	<b>5.6%</b>	<b>2.7%</b>	<b>1.3%</b>	<b>96.0%</b>
Hays	7	269,225	13,160	5.1%	11.1%	3.7%	85.3%
Liberty	12	101,992	4,610	4.7%	0.7%	2.9%	96.4%
Williamson	13	671,418	26,967	4.7%	6.3%	1.2%	92.5%
<b>Wise</b>	<b>20</b>	<b>74,895</b>	<b>3,007</b>	<b>4.3%</b>	<b>10.3%</b>	<b>7.2%</b>	<b>82.5%</b>
Montgomery	22	678,490	28,229	4.3%	4.2%	1.1%	94.8%
Bastrop	24	106,188	4,022	4.2%	13.6%	8.0%	78.4%
<b>Johnson</b>	<b>27</b>	<b>195,506</b>	<b>8,064</b>	<b>4.2%</b>	<b>0.8%</b>	<b>1.9%</b>	<b>97.3%</b>
Waller	31	61,894	2,420	4.1%	10.5%	3.4%	86.1%
<b>Hunt</b>	<b>32</b>	<b>108,282</b>	<b>4,824</b>	<b>4.0%</b>	<b>13.9%</b>	<b>17.8%</b>	<b>68.3%</b>
Collin	36	1,158,696	44,246	3.9%	8.7%	2.1%	89.2%
Fort Bend	46	889,146	29,022	3.4%	15.3%	23.1%	61.6%



# Top Places for Numeric Growth, 2021-2022

**Texas Cities/Towns with the largest numerical growth from 2021 to 2022 and their ranks in the U.S.**

National Ranking	City/Town	
1	Fort Worth	19,170
3	San Antonio	18,889
4	Houston	11,223
5	Georgetown	10,887
11	Dallas	8,833
13	Frisco	8,506
20	Leander	7,282
23	Conroe	5,967
26	New Braunfels	5,675
32	Kyle	5,632



# Top Places for Percent Growth, 2021-2022

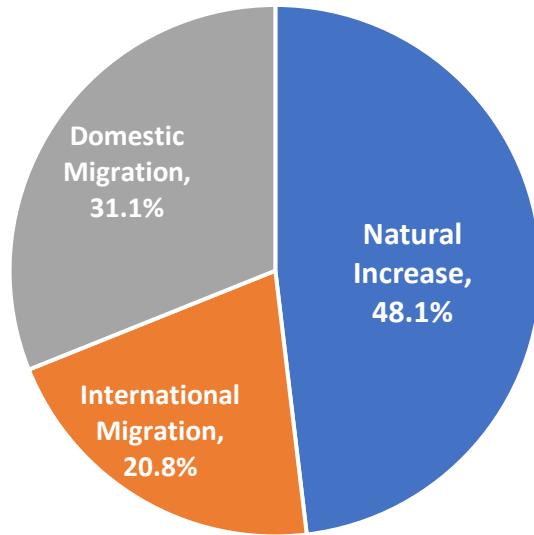
Texas Cities/Towns with the fastest growth rate from 2021 to 2022 and their ranks in the U.S.

National Ranking	City/Town	
1	Georgetown	14.4
3	Kyle	10.9
9	Leander	10.9
10	Little Elm	8.0
13	Conroe	6.3
15	New Braunfels	5.7
17	Temple	4.5
27	Allen	4.2
29	Frisco	4.0
30	Burleson	3.7

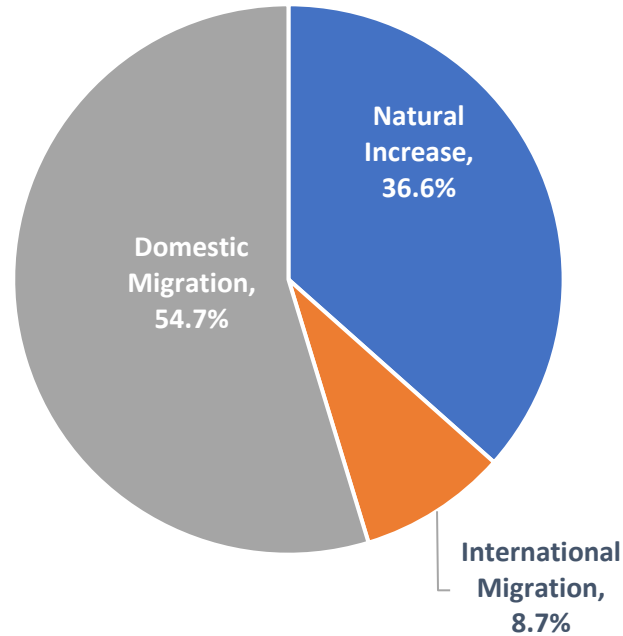
# Estimated Components of Population Change for Texas, 2010-2020 and 2020-2021, 2021-2022



2010 to 2020

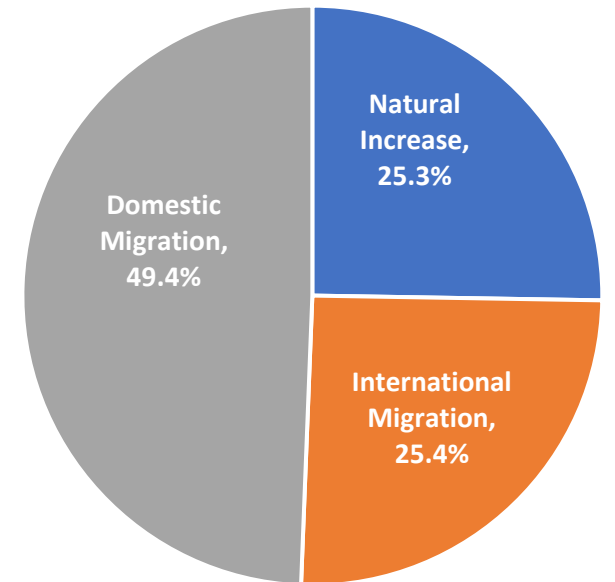


2020 to 2021



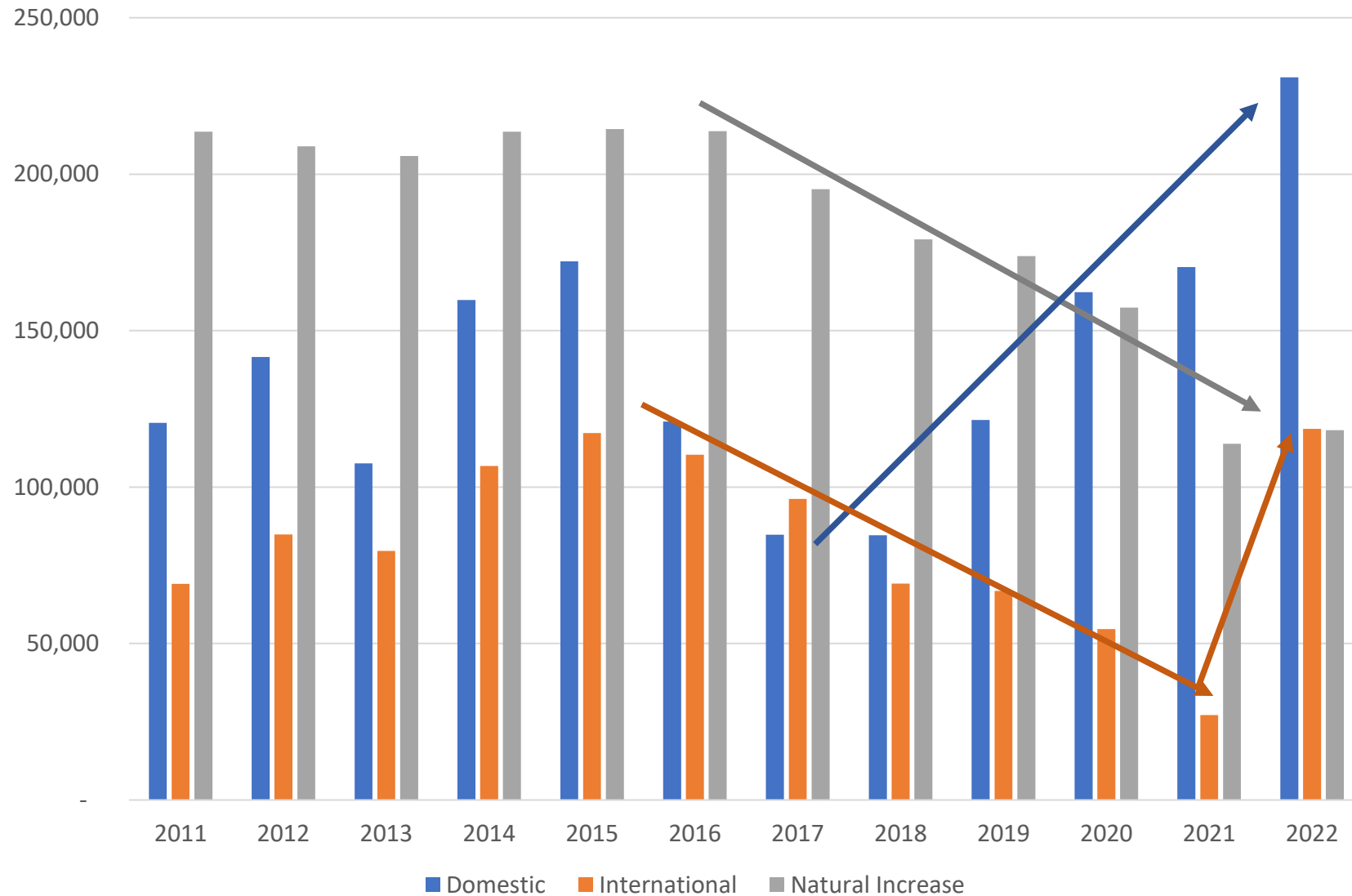
**326,390**

2021 to 2022



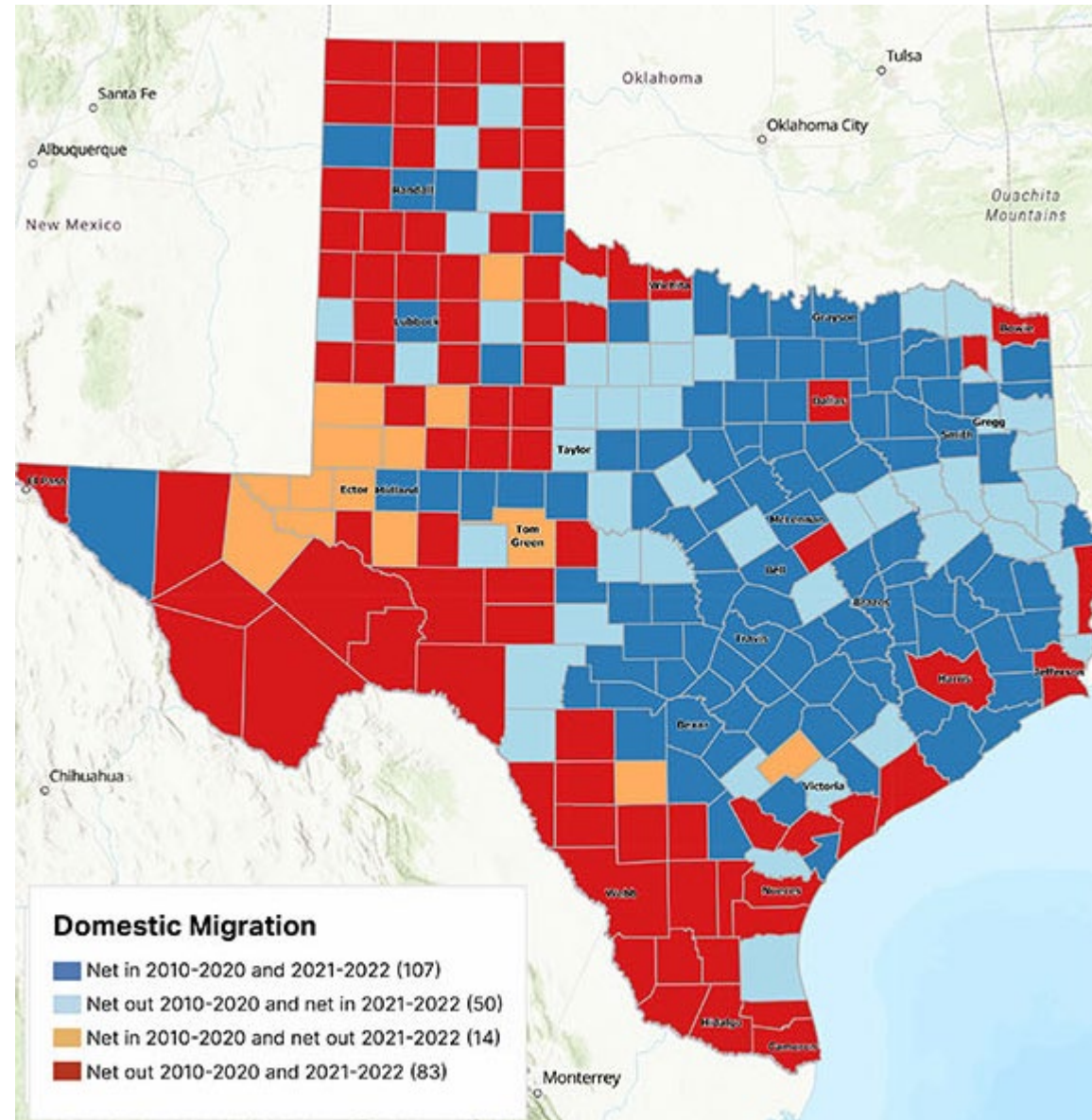
**470,708**

# Estimated Domestic and International Migration for Texas, 2011-2021

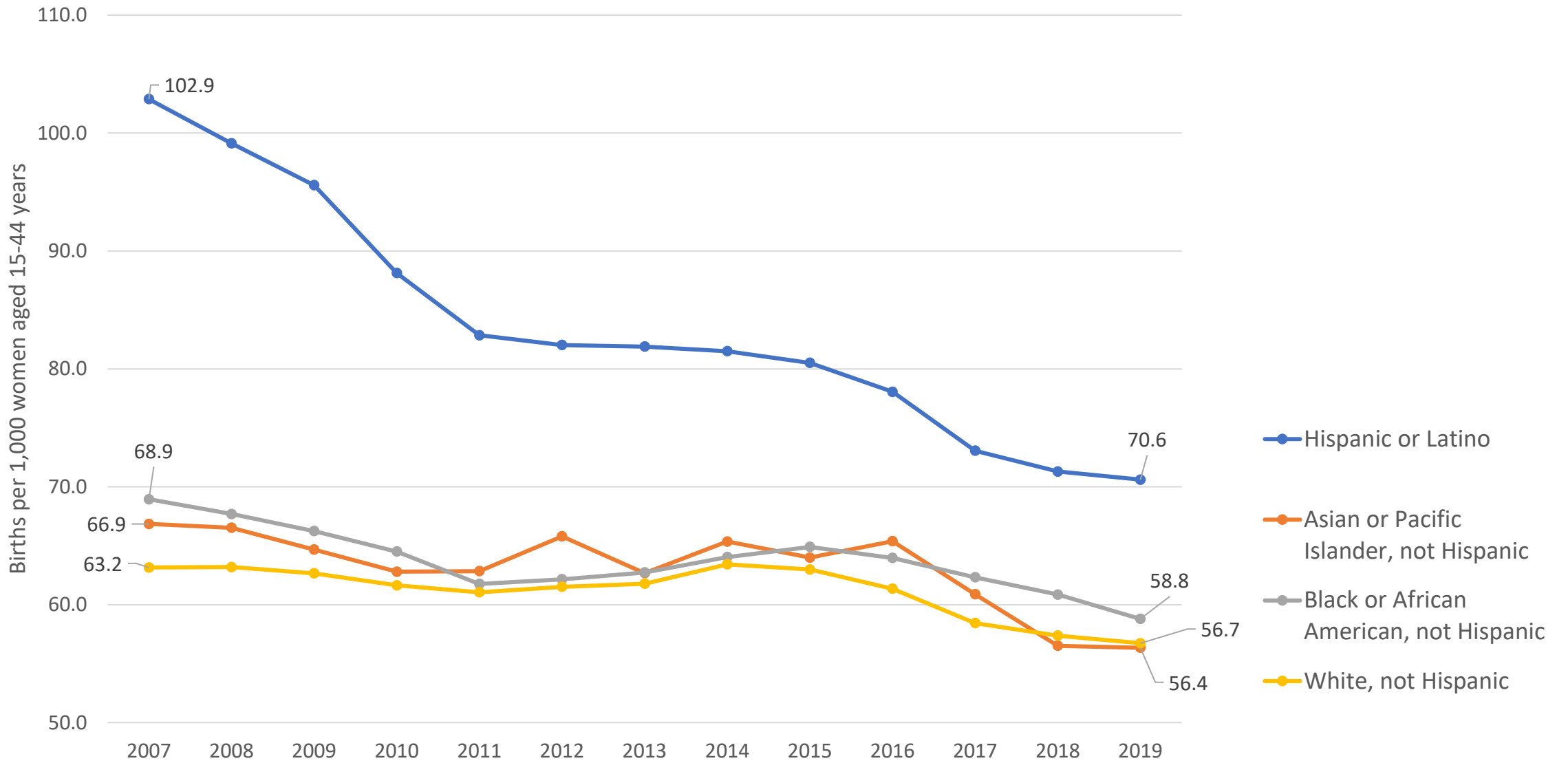




# Estimated Change from Domestic Migration Comparing 2010-20 and 2021-22, Texas Counties



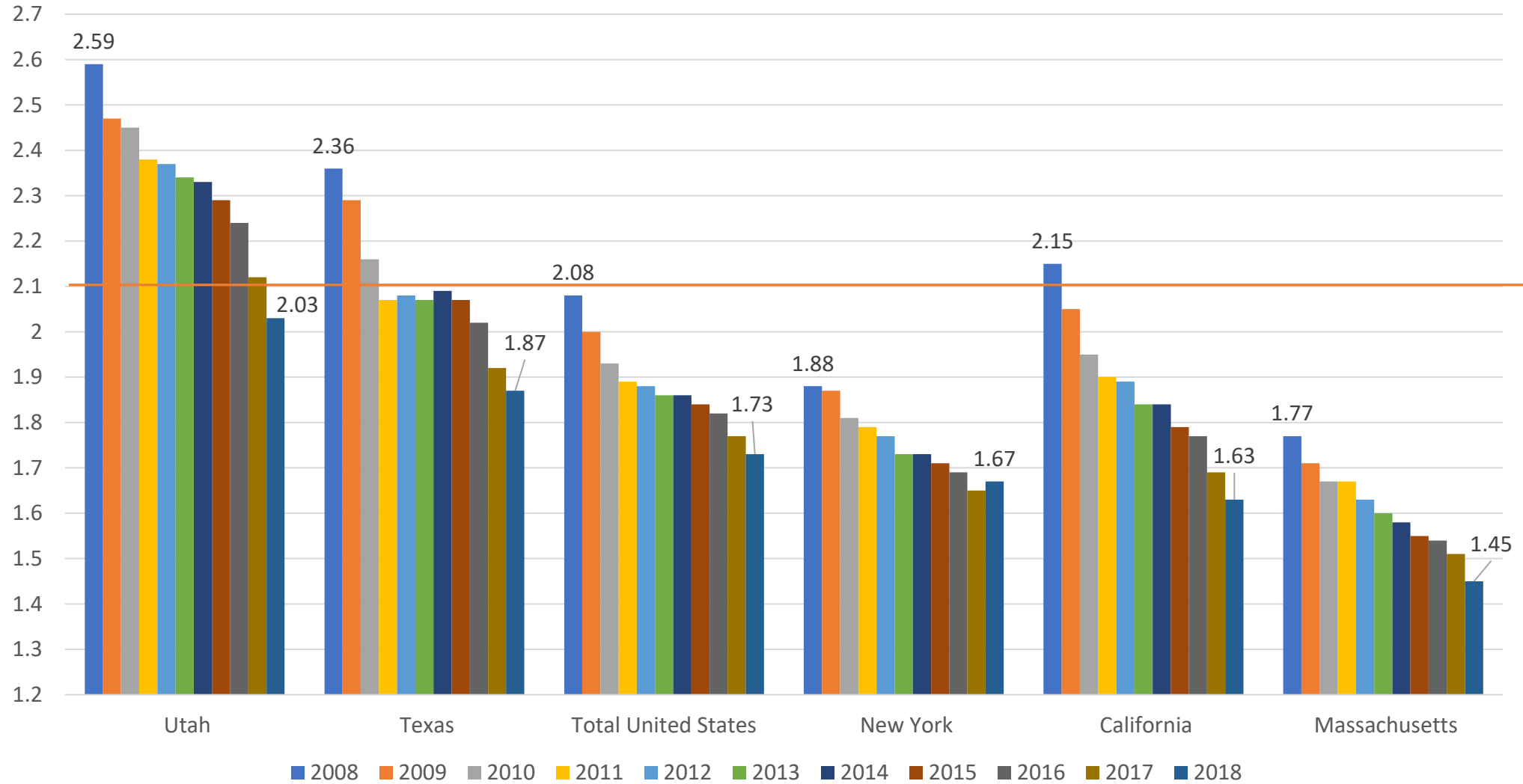
# Texas Birth Rates, 2007-2019



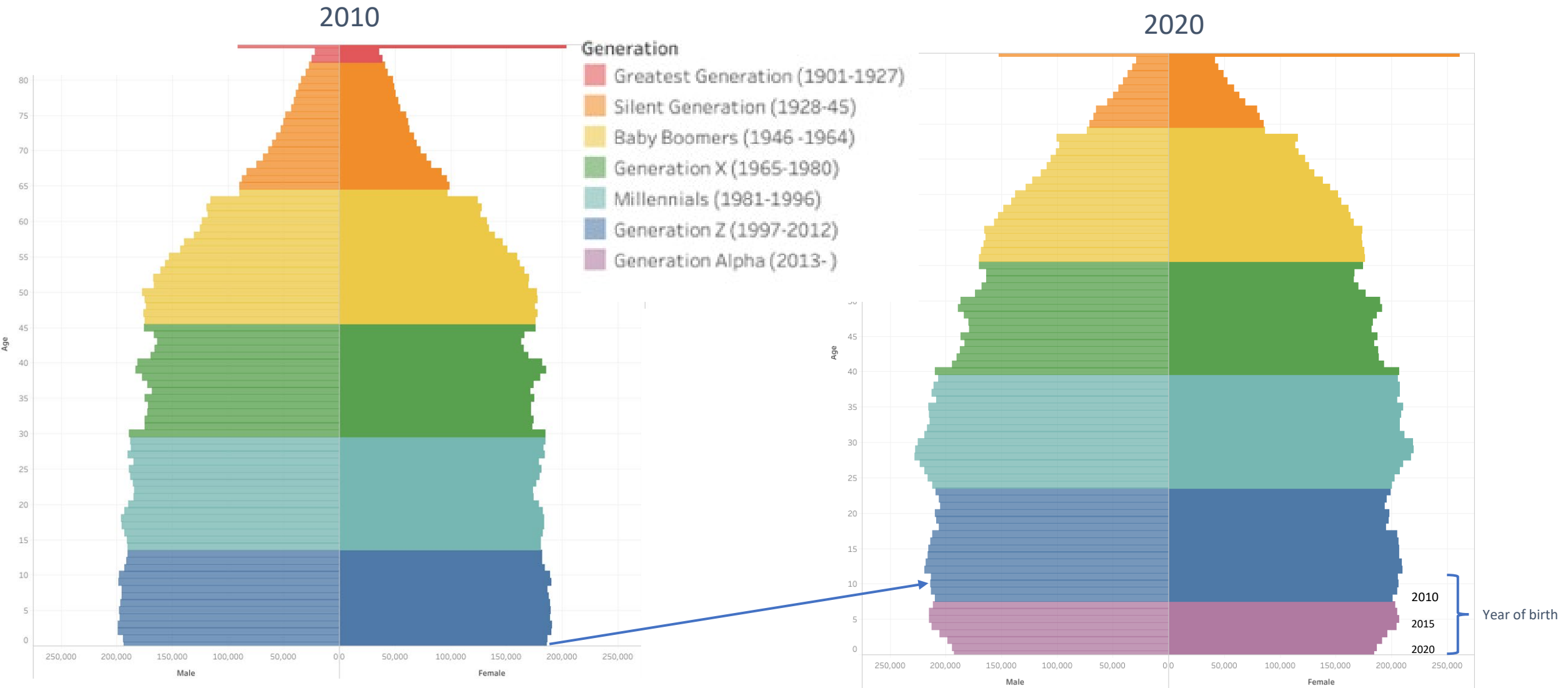
SOURCE: Centers for Disease Control and Prevention, National Center for Health Statistics.



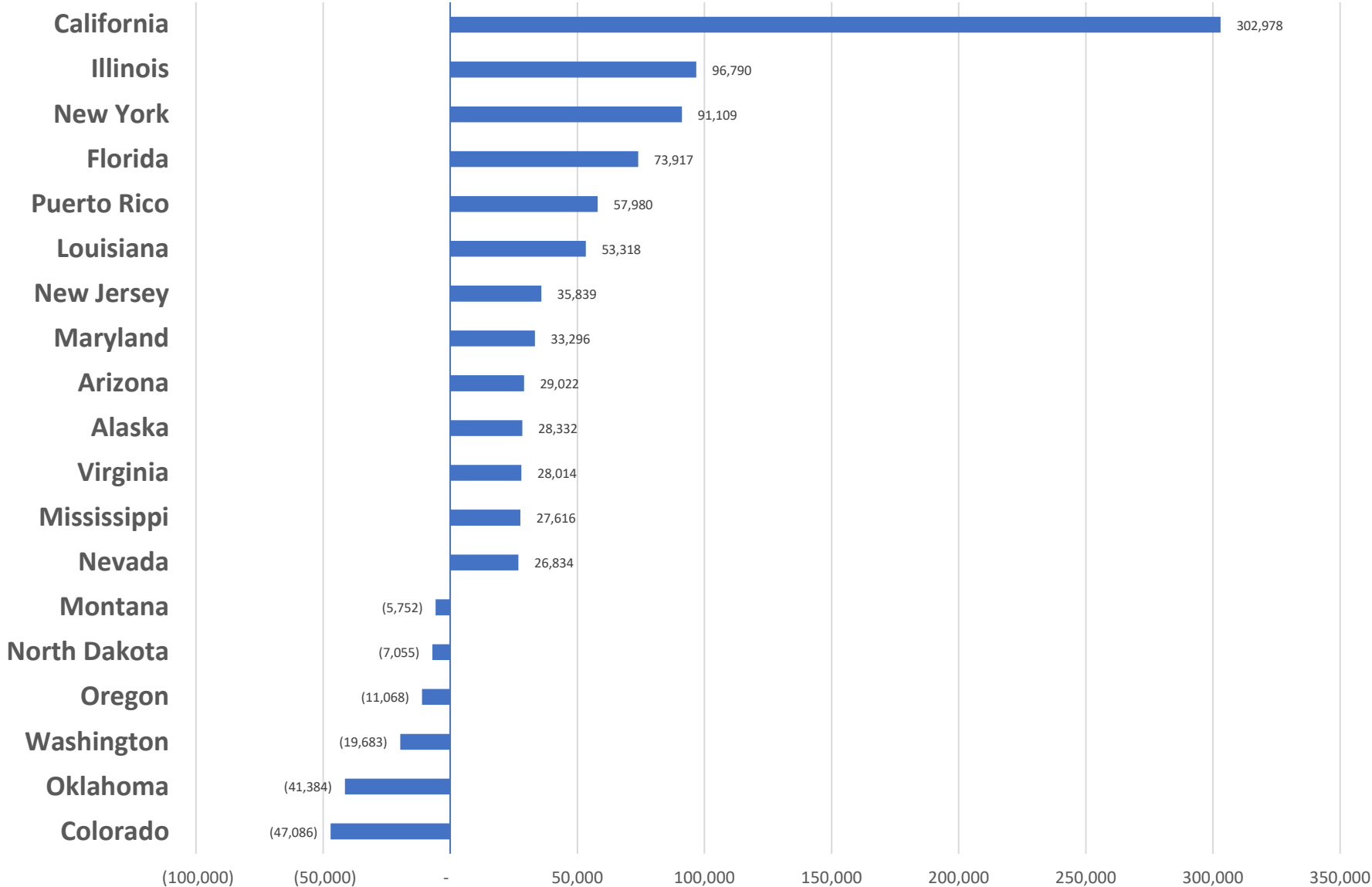
# Total Fertility Rate for Select States, 2008-2018



# Generational Population Pyramids, Texas, 2010 and 2020



# Estimated Net Domestic Migrants Between Texas and Other States, 2010-2019

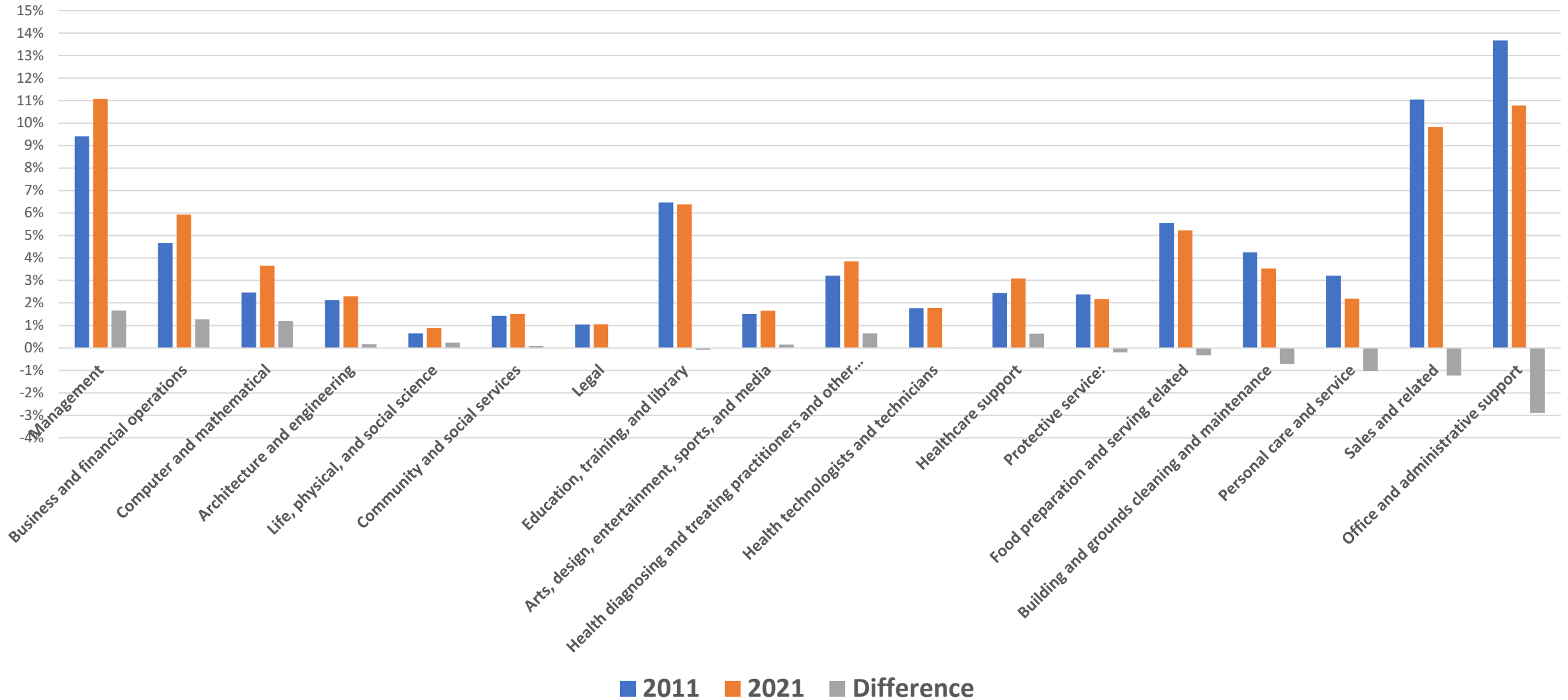


Source: U.S. Census Bureau, State-to-State Migration Flows, 2010-2019



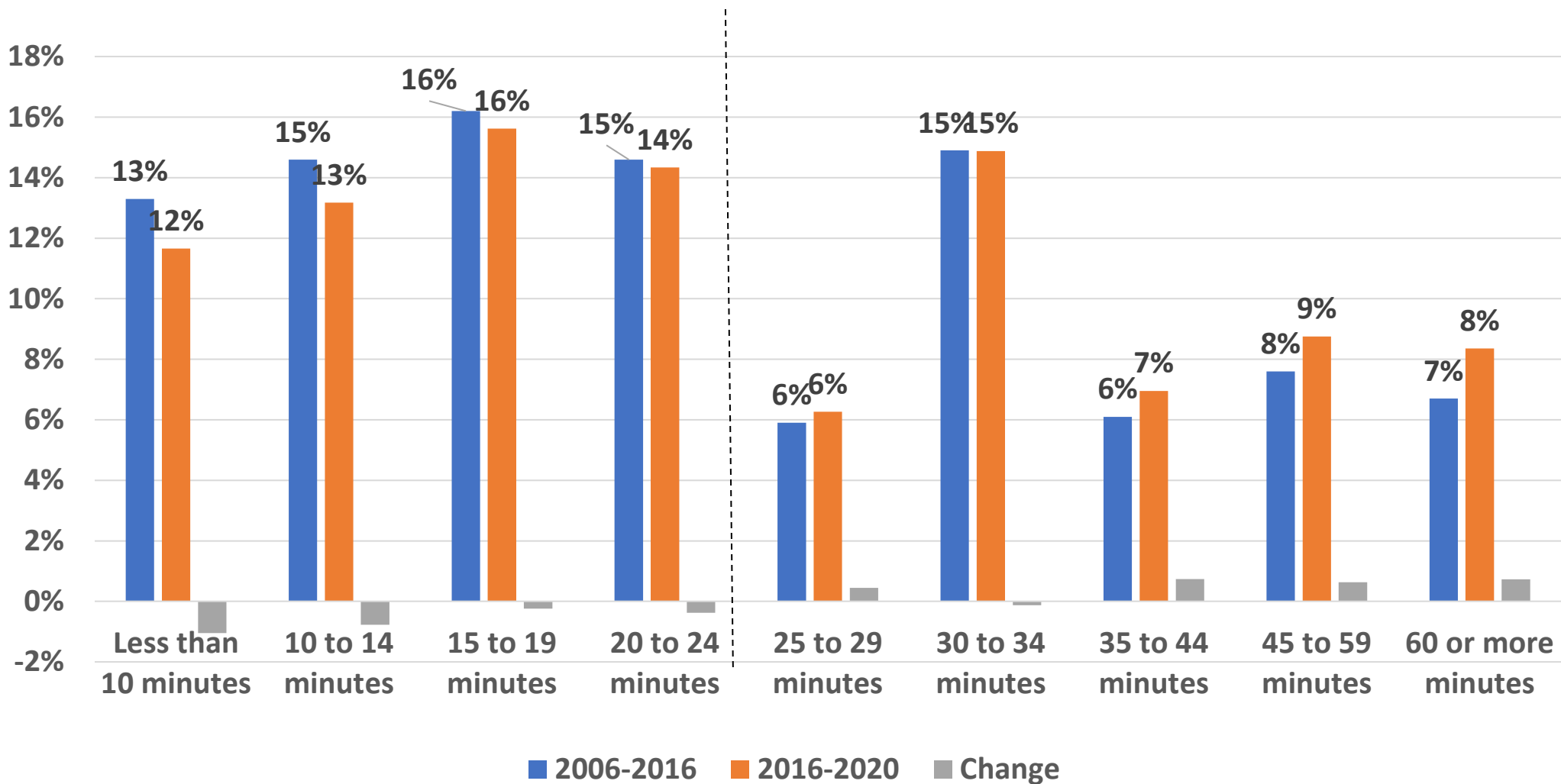


# Percent of Civilian Labor Force by Occupation, Texas, 2011, 2021 and 2011-2012 Change



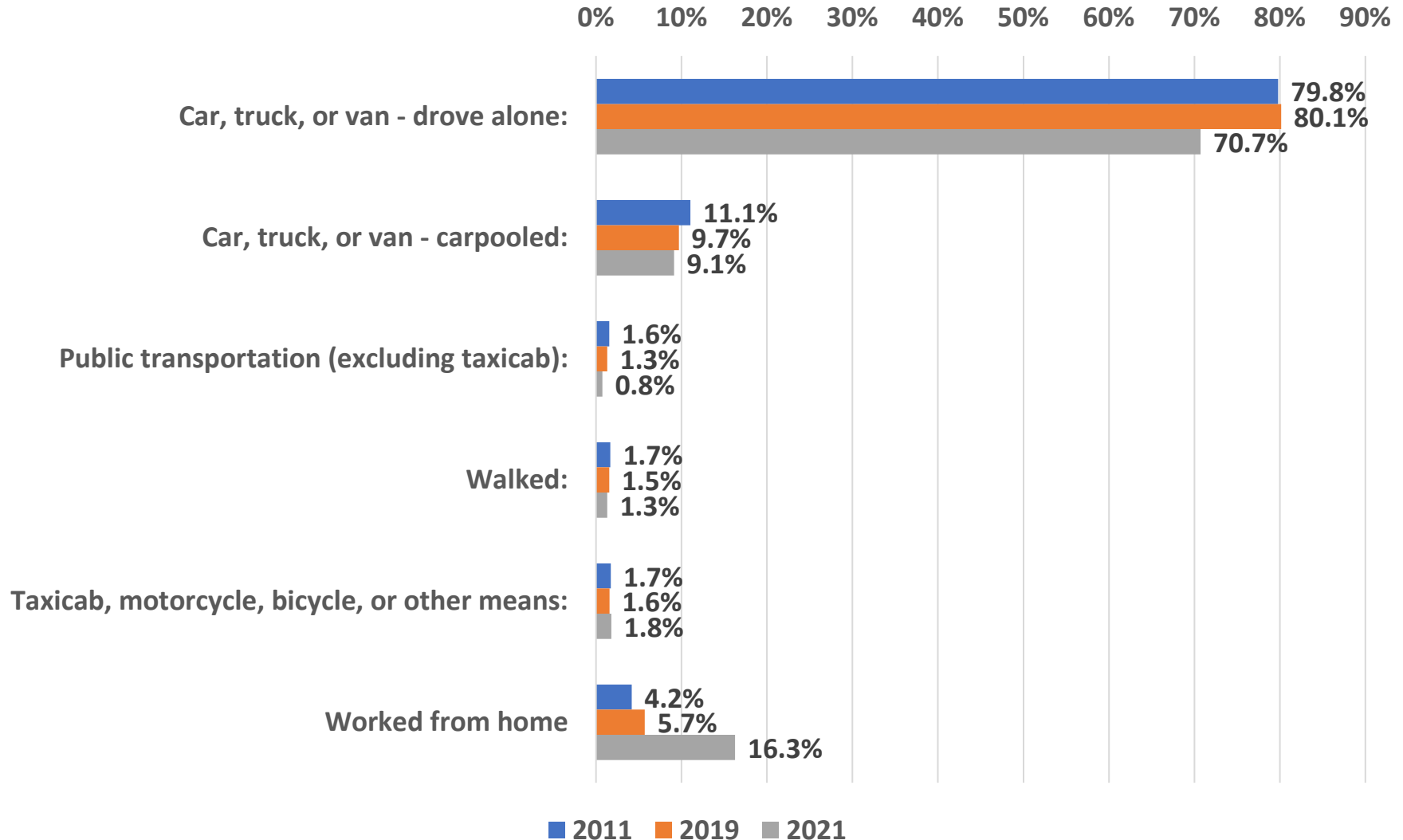


# Change in Travel Time to Work, Texas, 2006-2010 and 2016-2020

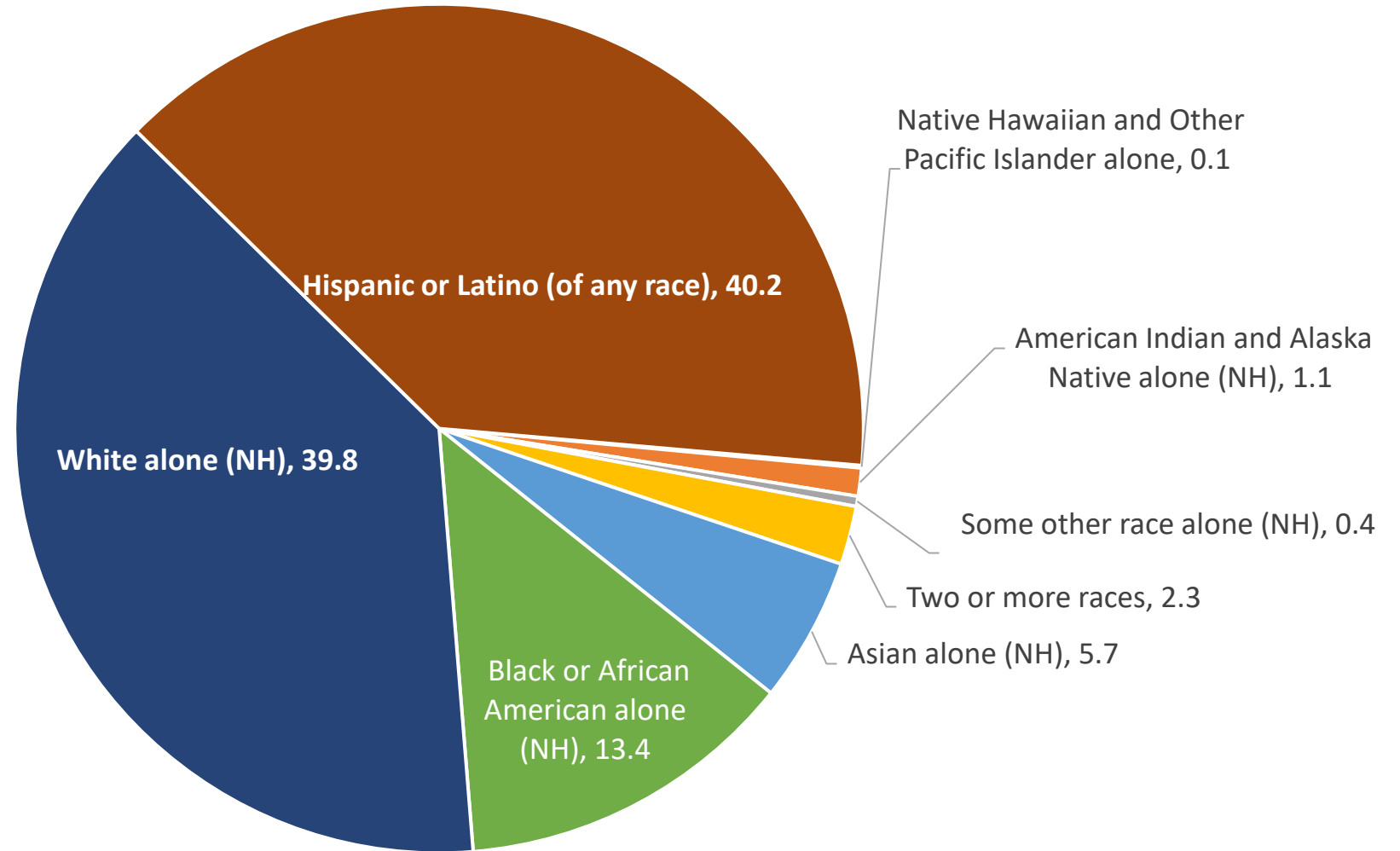




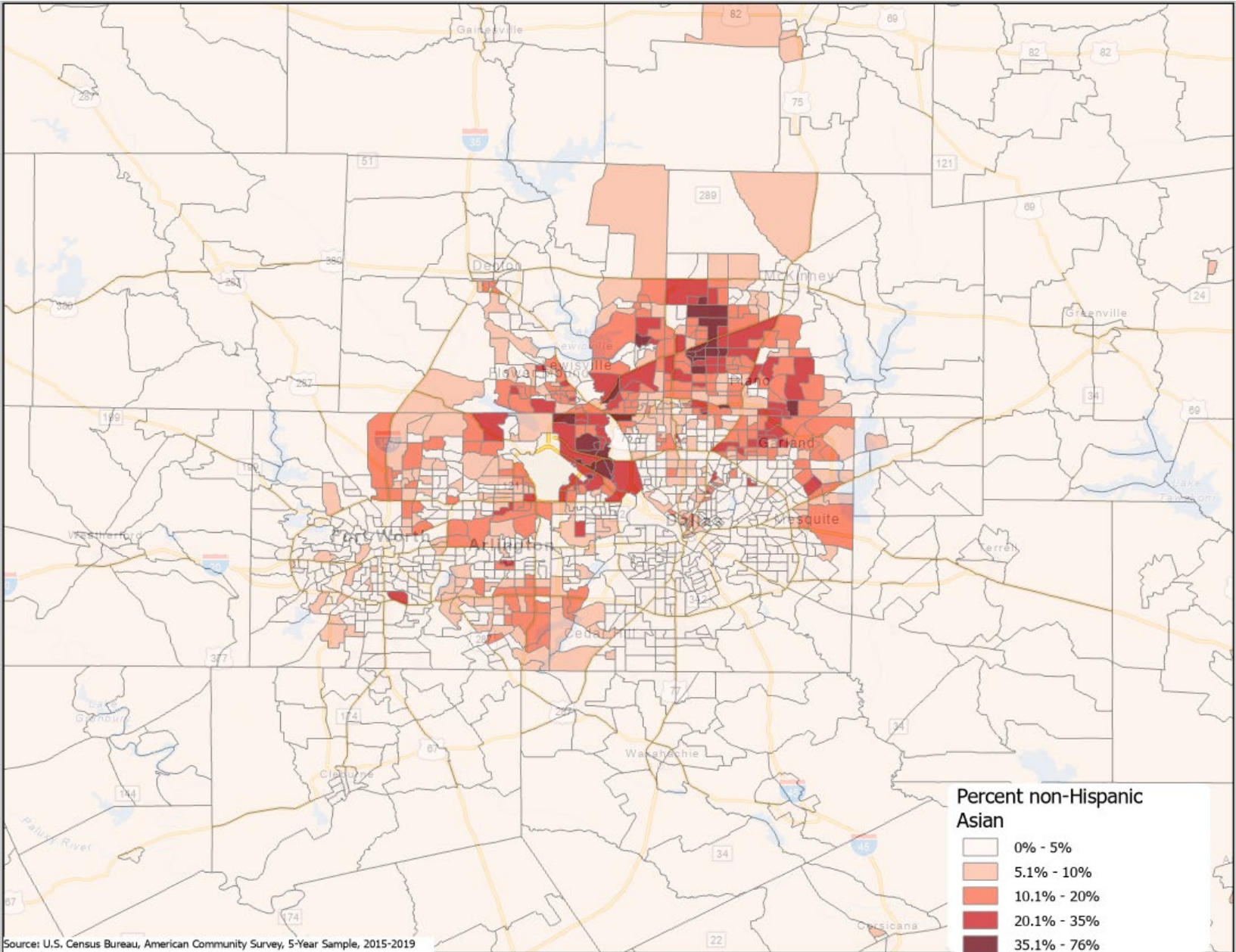
# Means of Transportation, Texas, 2011, 2019, 2021



# Estimated Racial/Ethnic Composition of Texas Population, 2022

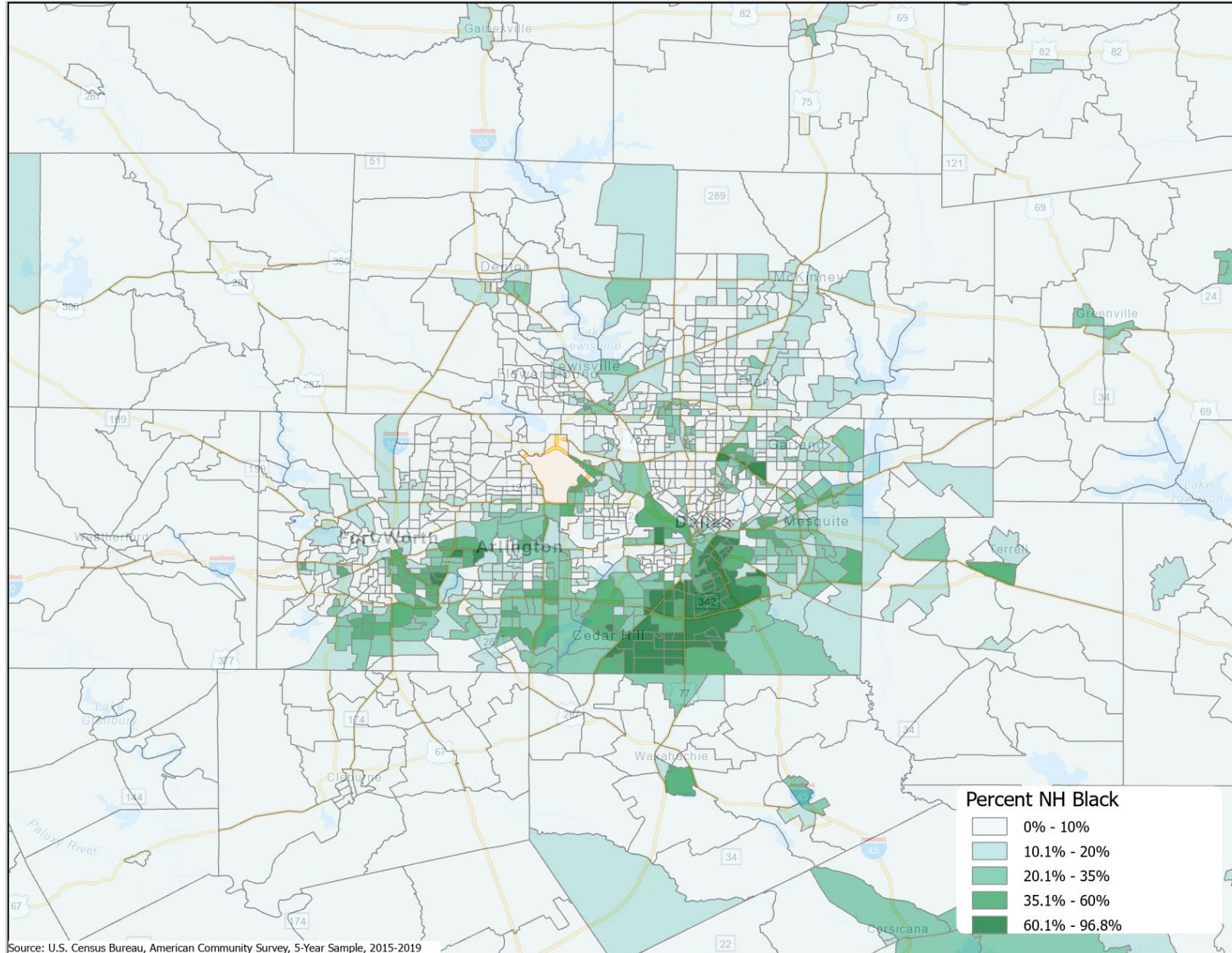


# Percent non-Hispanic Asian population, Metroplex area, census tracts, 2015-2019

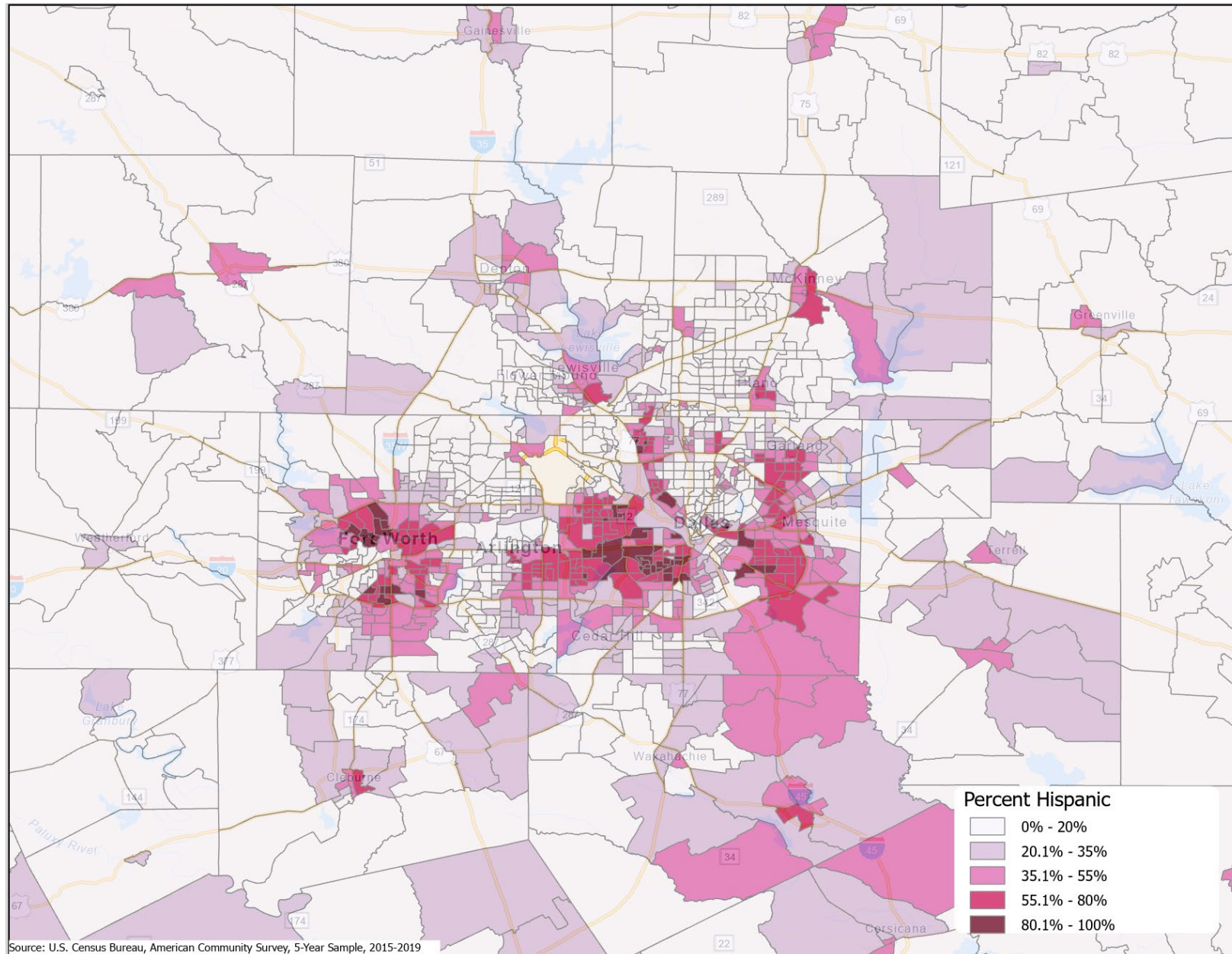




# Percent non-Hispanic Black population, Metroplex area, census tracts, 2015-2019

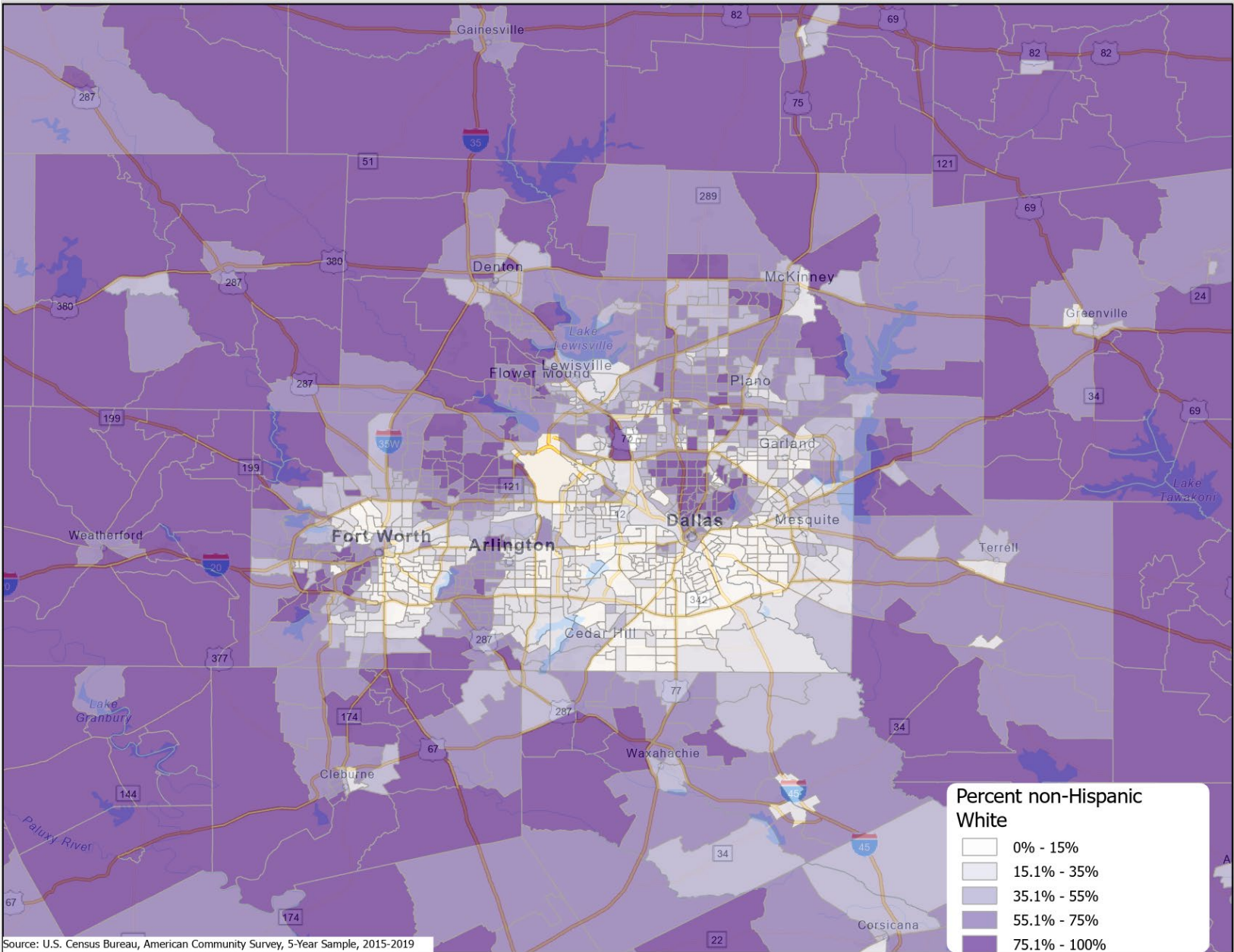


# Percent population that is Hispanic, Metroplex area, census tracts, 2015-2019





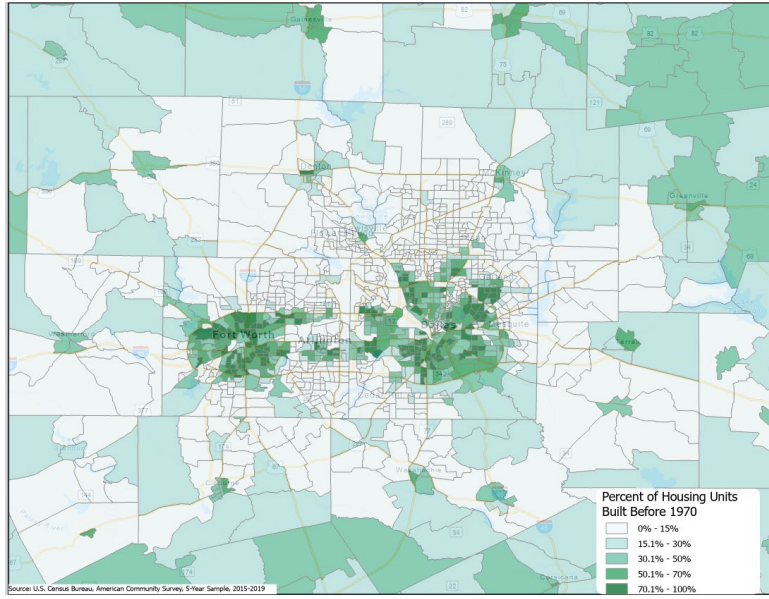
# Percent population that is non-Hispanic white, Metroplex area, census tracts, 2015-2019



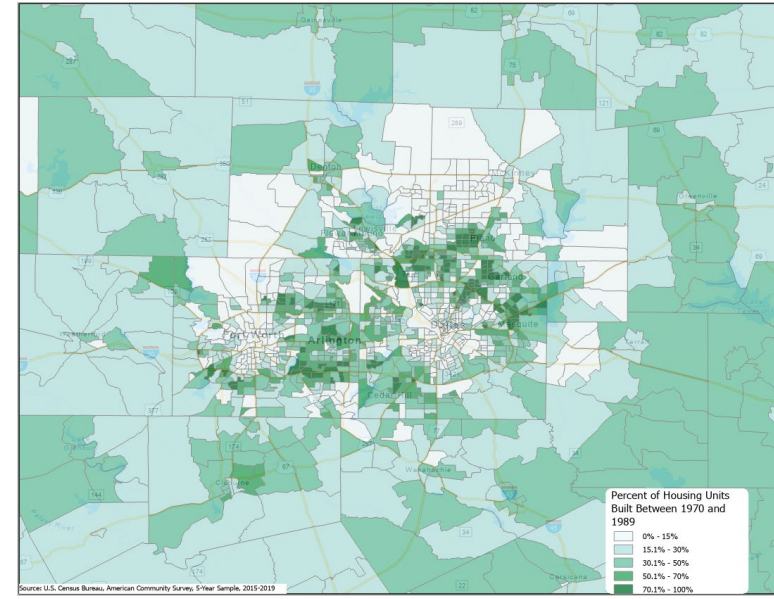
# Percent of housing stock by year built, Metroplex area, census tracts, 2015-2019



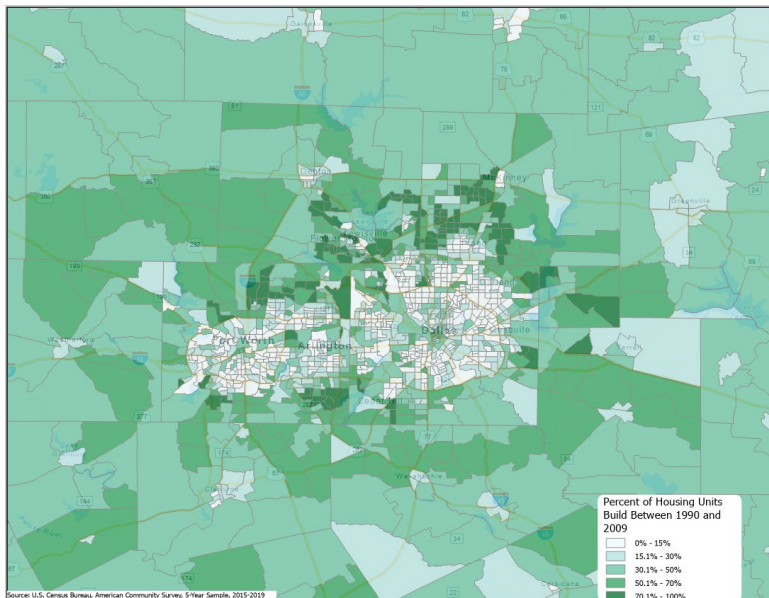
Before 1970



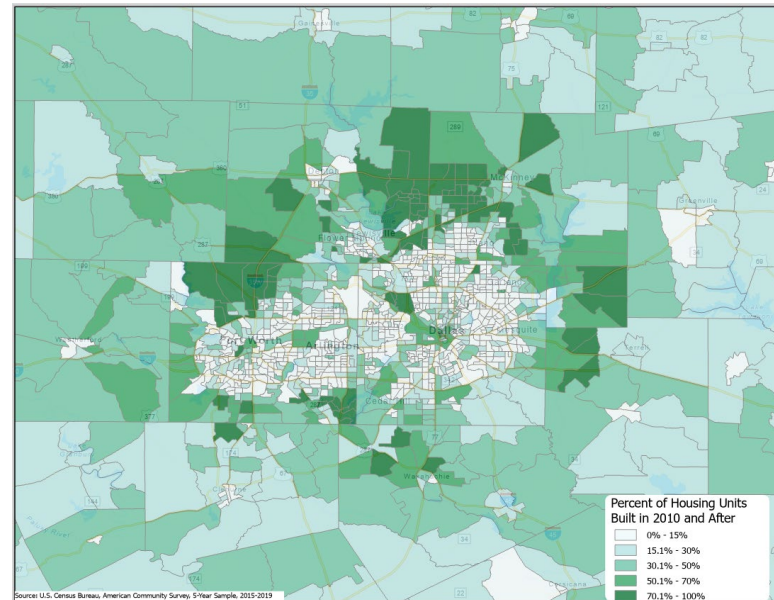
1970-1989



1990-2009

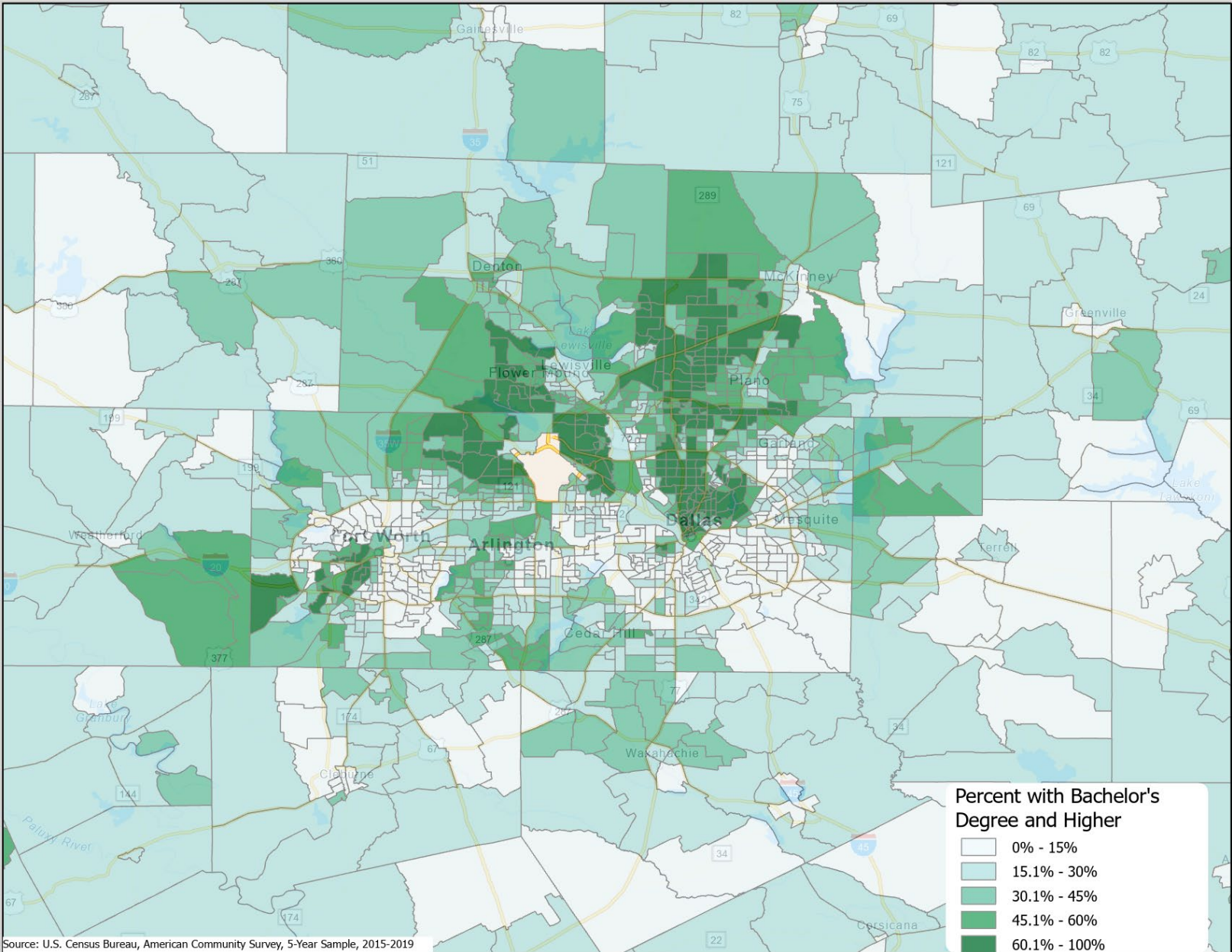


2010 and later

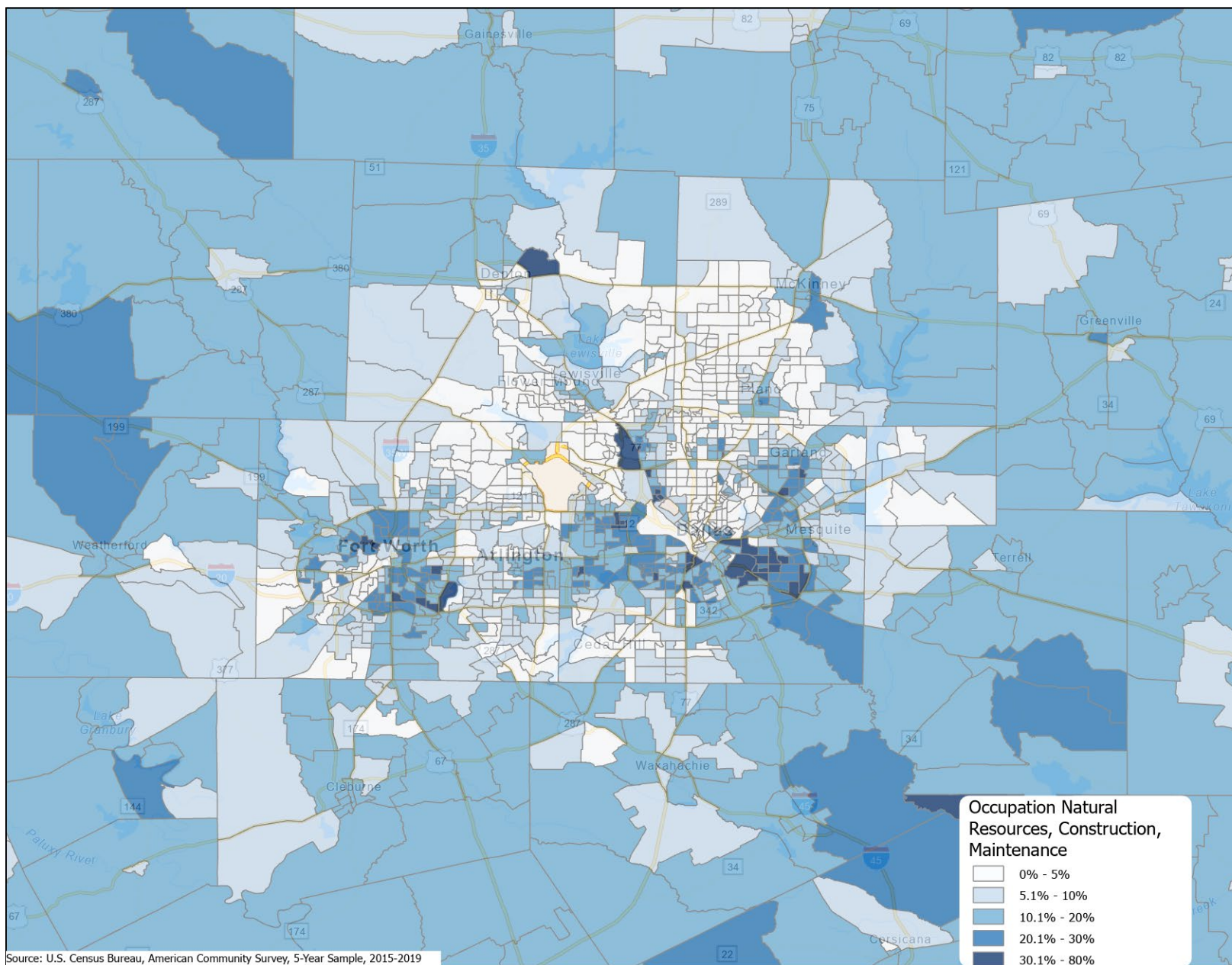




# Percent of aged 25 years and older with bachelor's degree or higher, Metroplex area, census tracts, 2015-2019

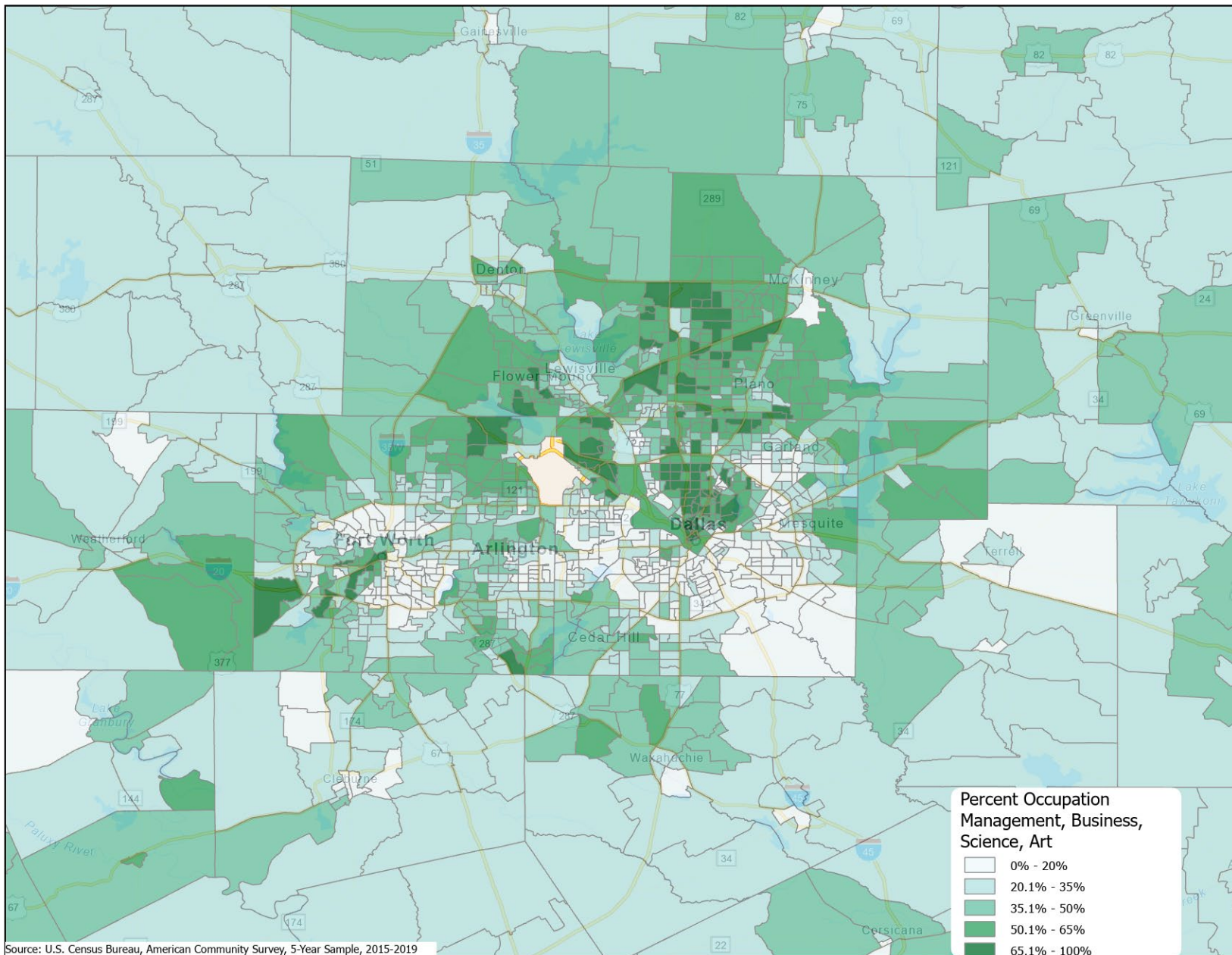


# Percent of the labor force working in natural resources, construction, maintenance, occupations, Metroplex area, census tracts, 2015-2019





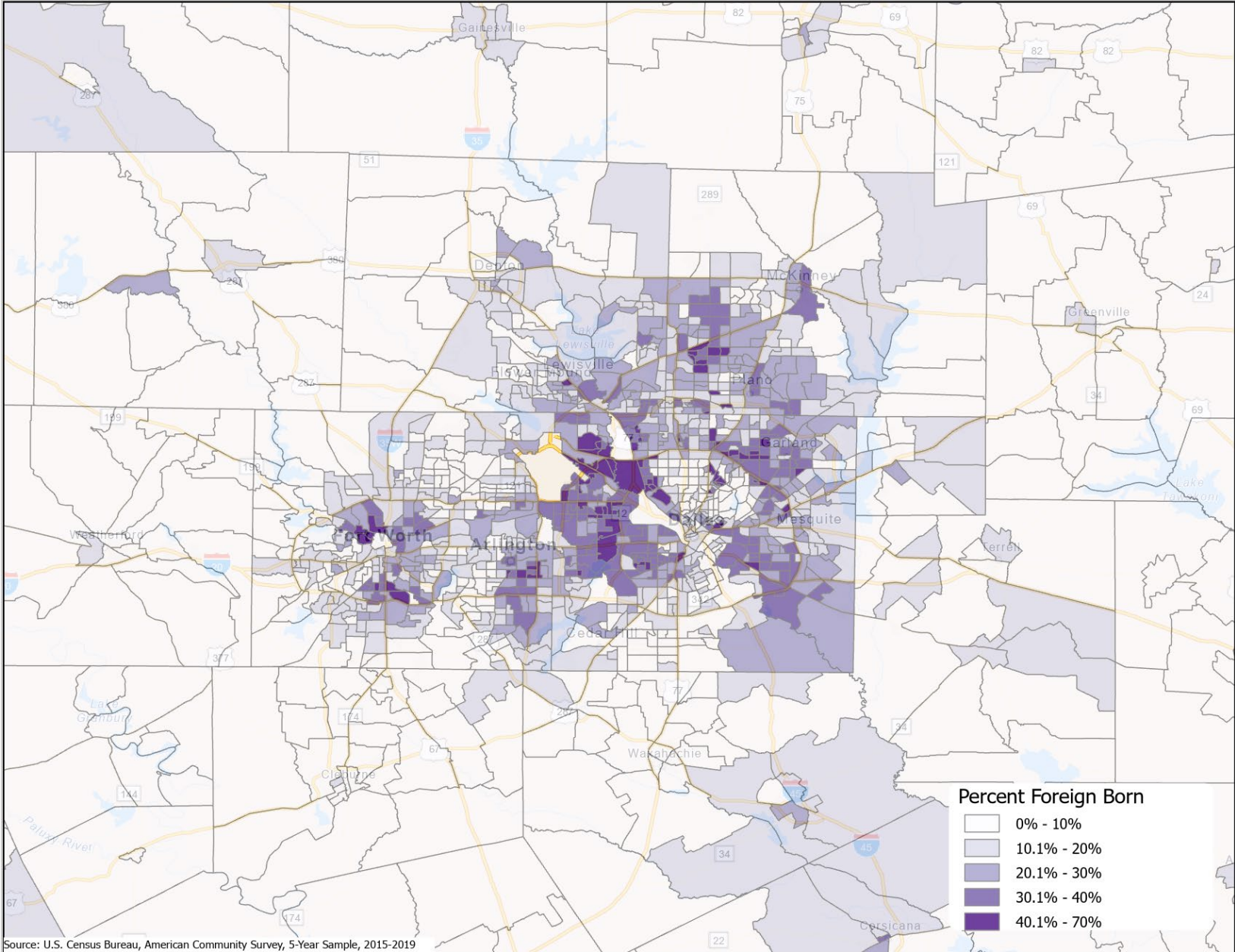
# Percent of labor force working in management, business, science, art occupations, Metroplex area, census tracts, 2015-2019



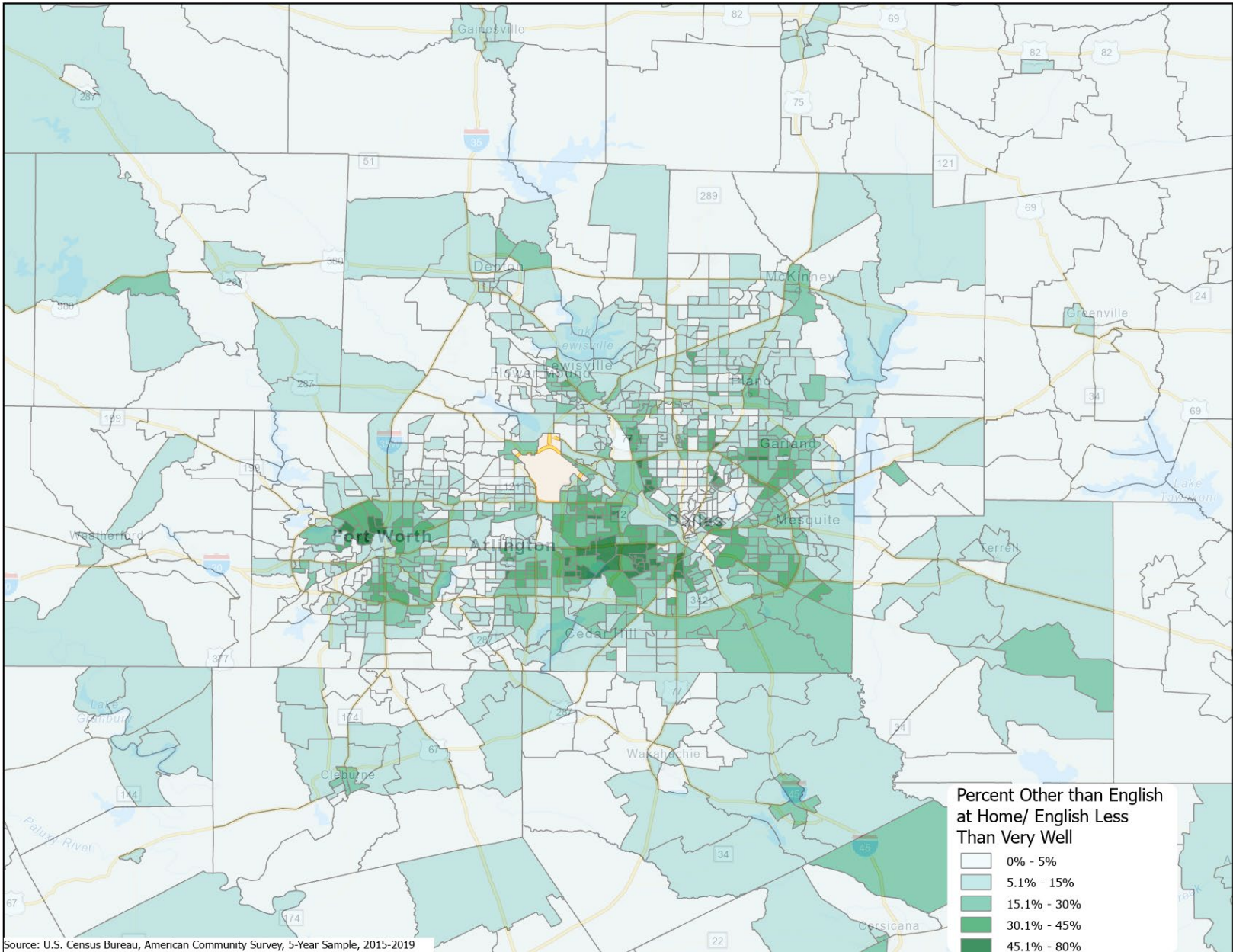
Source: U.S. Census Bureau, American Community Survey, 5-Year Sample, 2015-2019



# Percent population that is foreign-born, Metroplex area, census tracts, 2015-2019

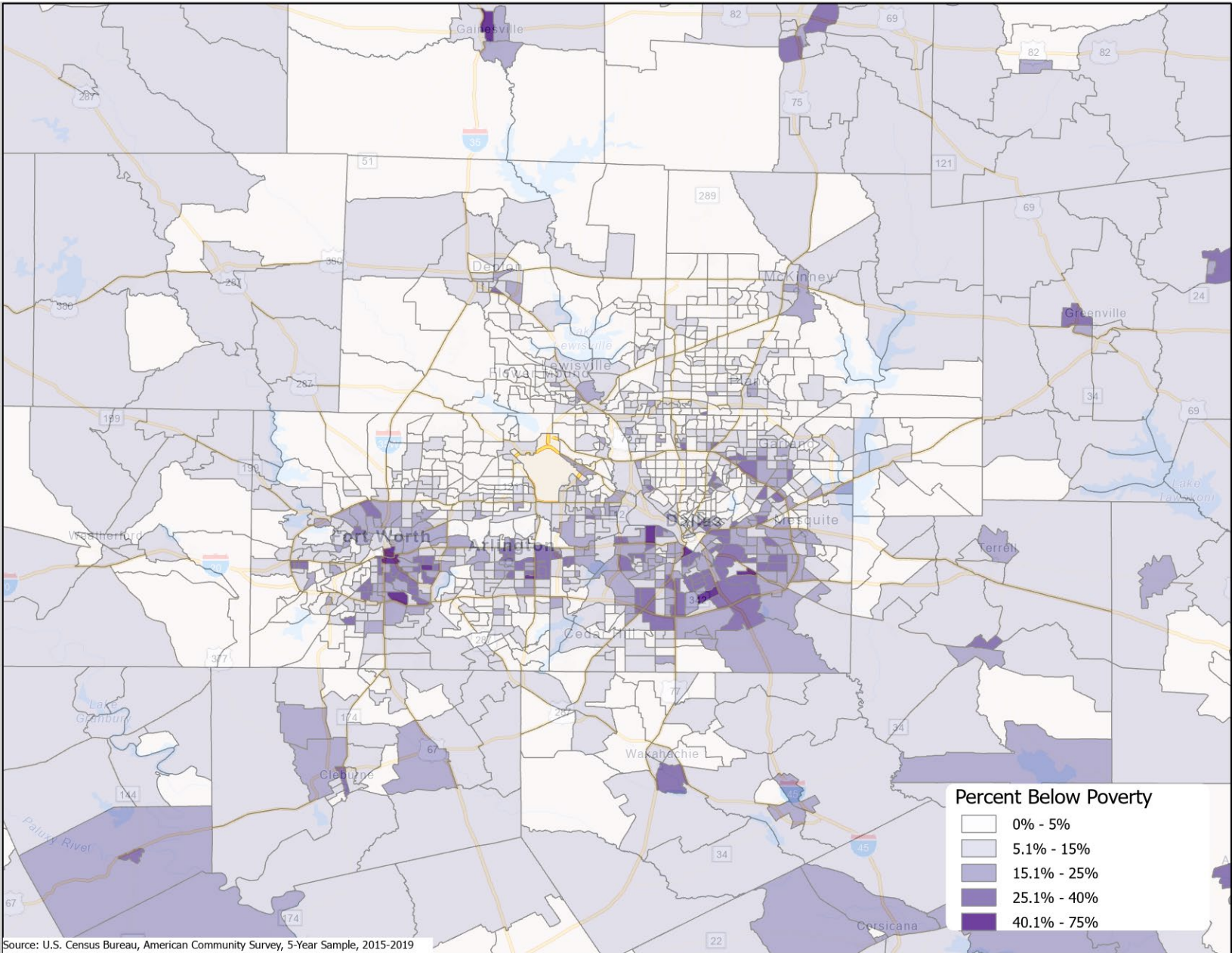


# Percent of population speak a language other than English and English less than very well, Metroplex area, census tracts, 2015-2019

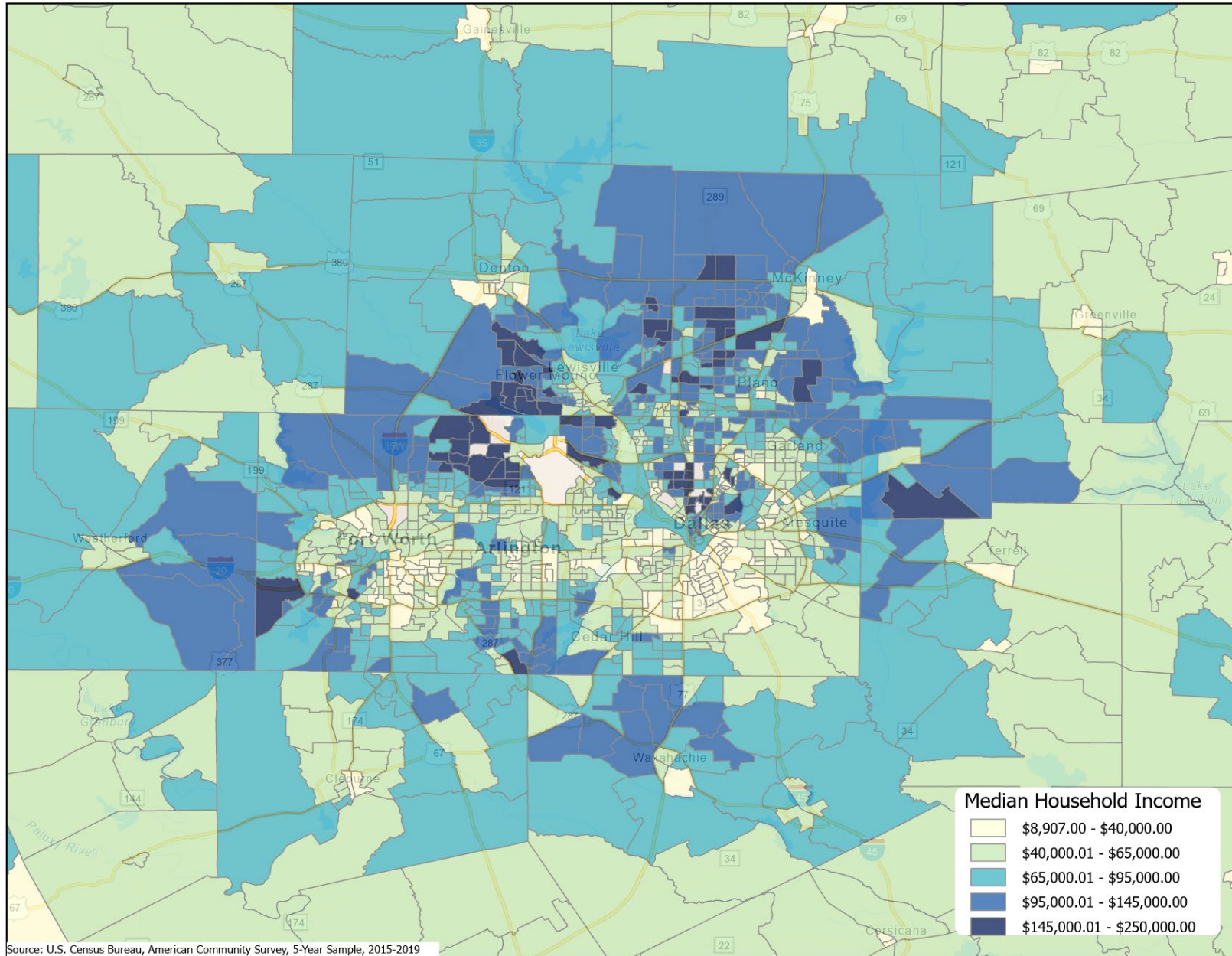




# Percent of population living below poverty, Metroplex area, census tracts, 2015-2019

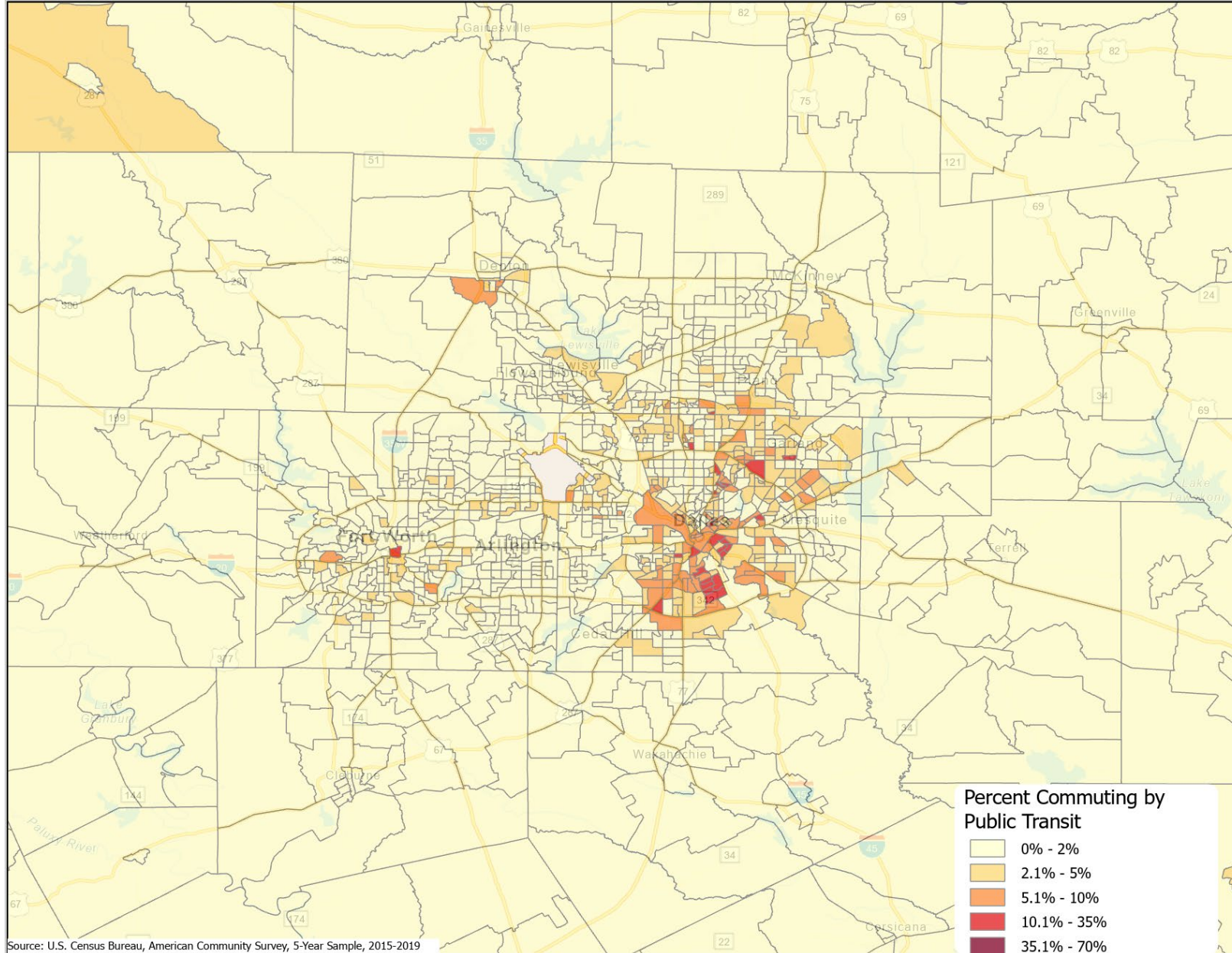


# Median household income, Metroplex area, census tracts, 2015-2019

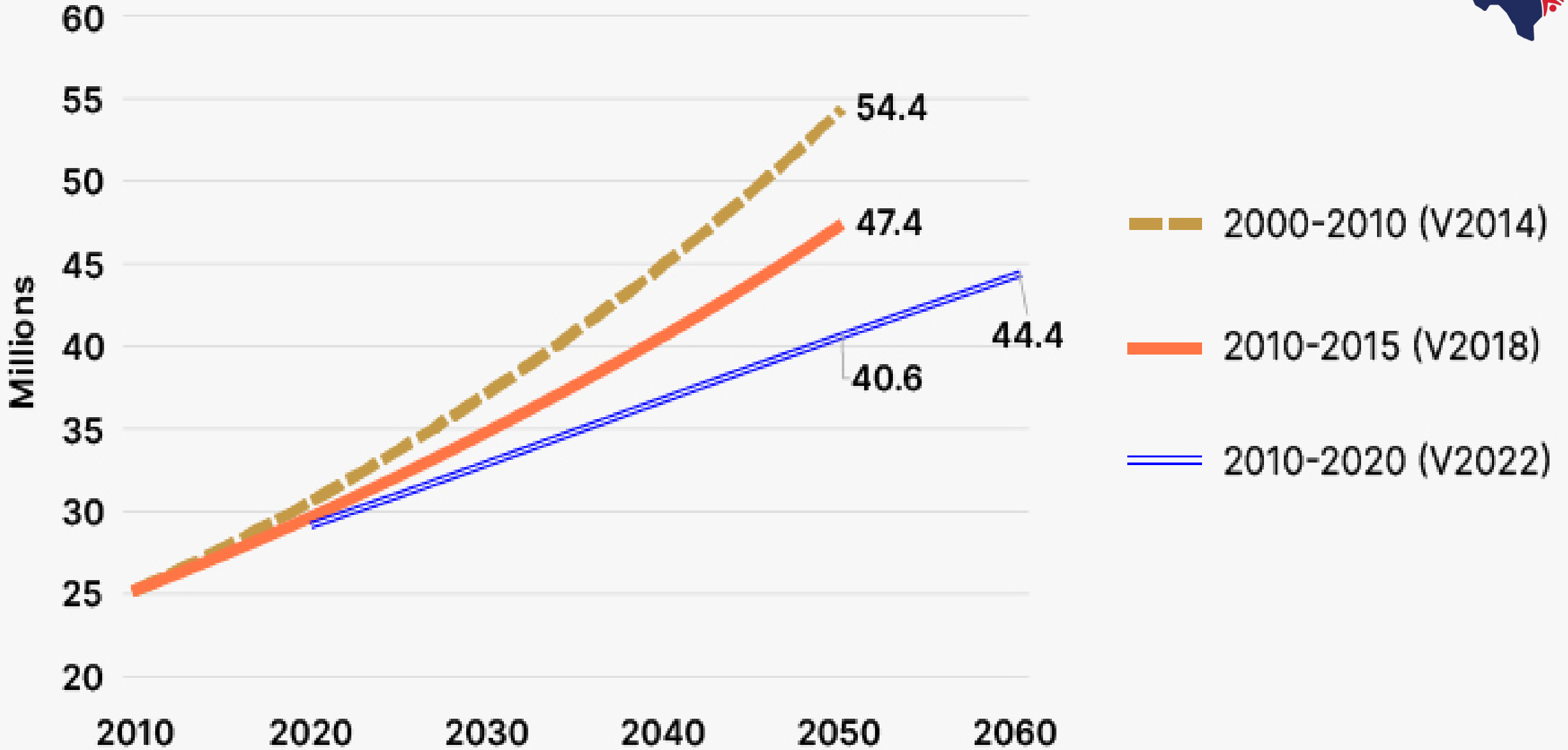




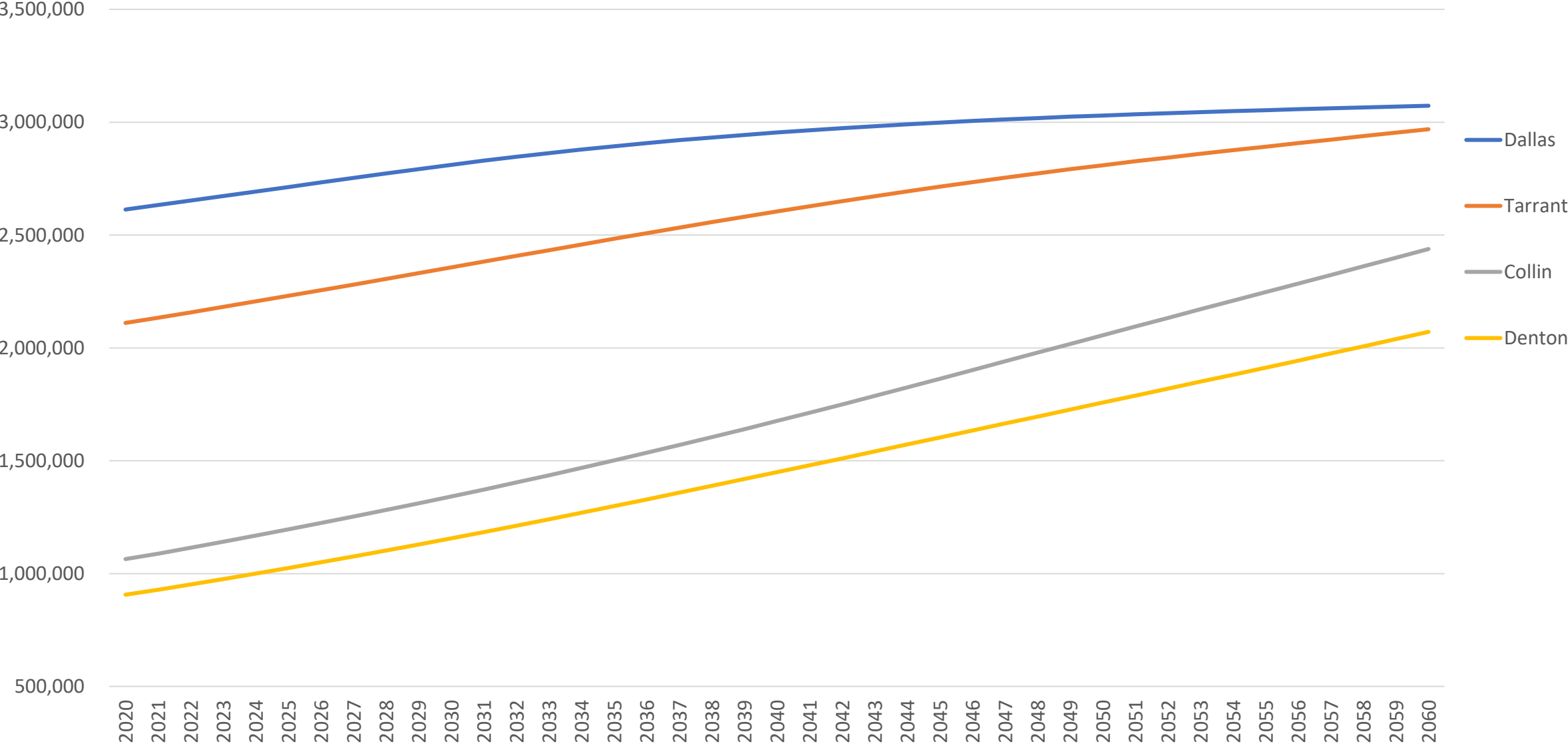
# Percent Commuting by Public Transit, Metroplex area, census tracts, 2015-2019



# Projected Population Growth in Texas, 2010-2050



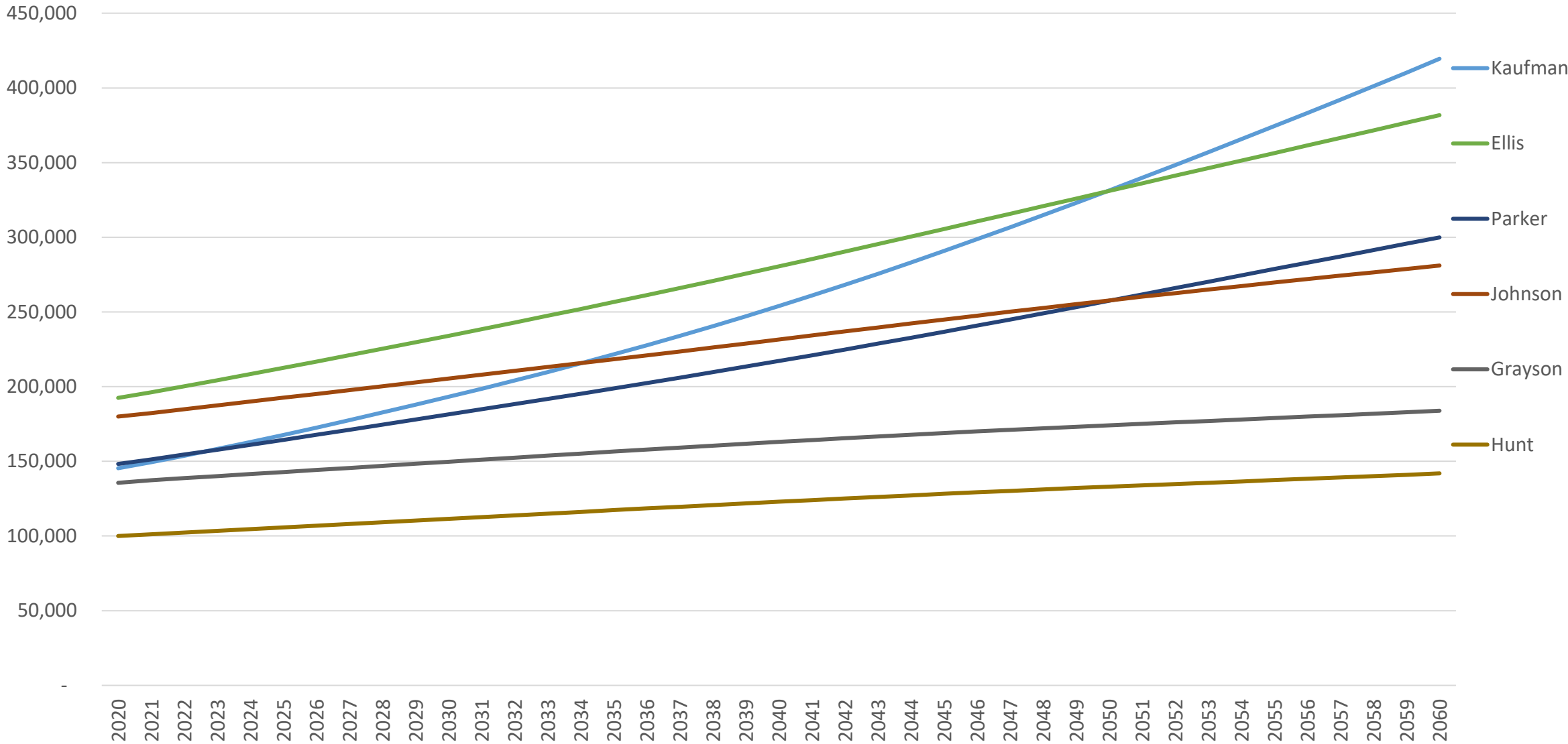
# Population Projections, DFW Metro Largest and Fast Growing Counties, 2020-2060



Source: Texas Demographic Center, 2022 Population Projections

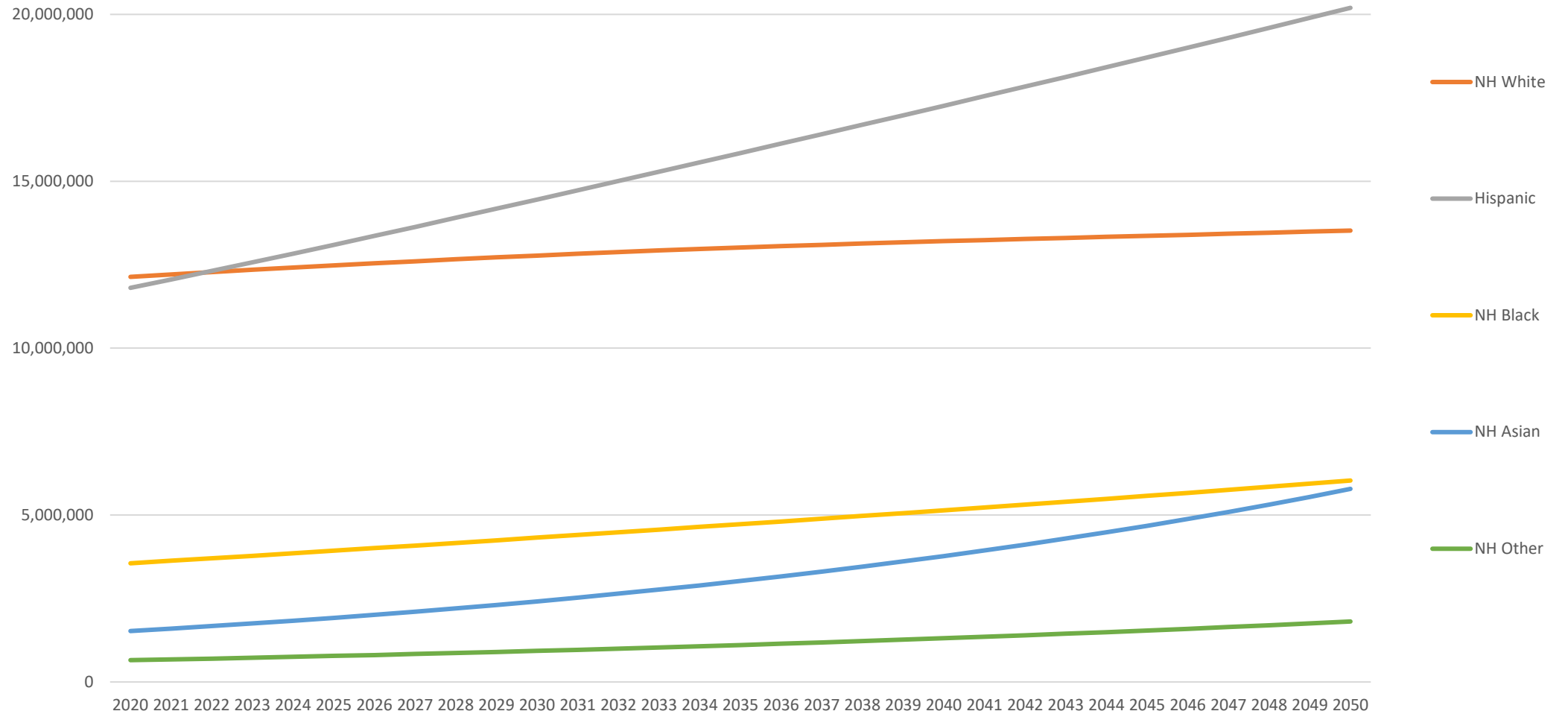


# Population Projections, DFW Metro Largest and Fast Growing Counties, 2020-2060



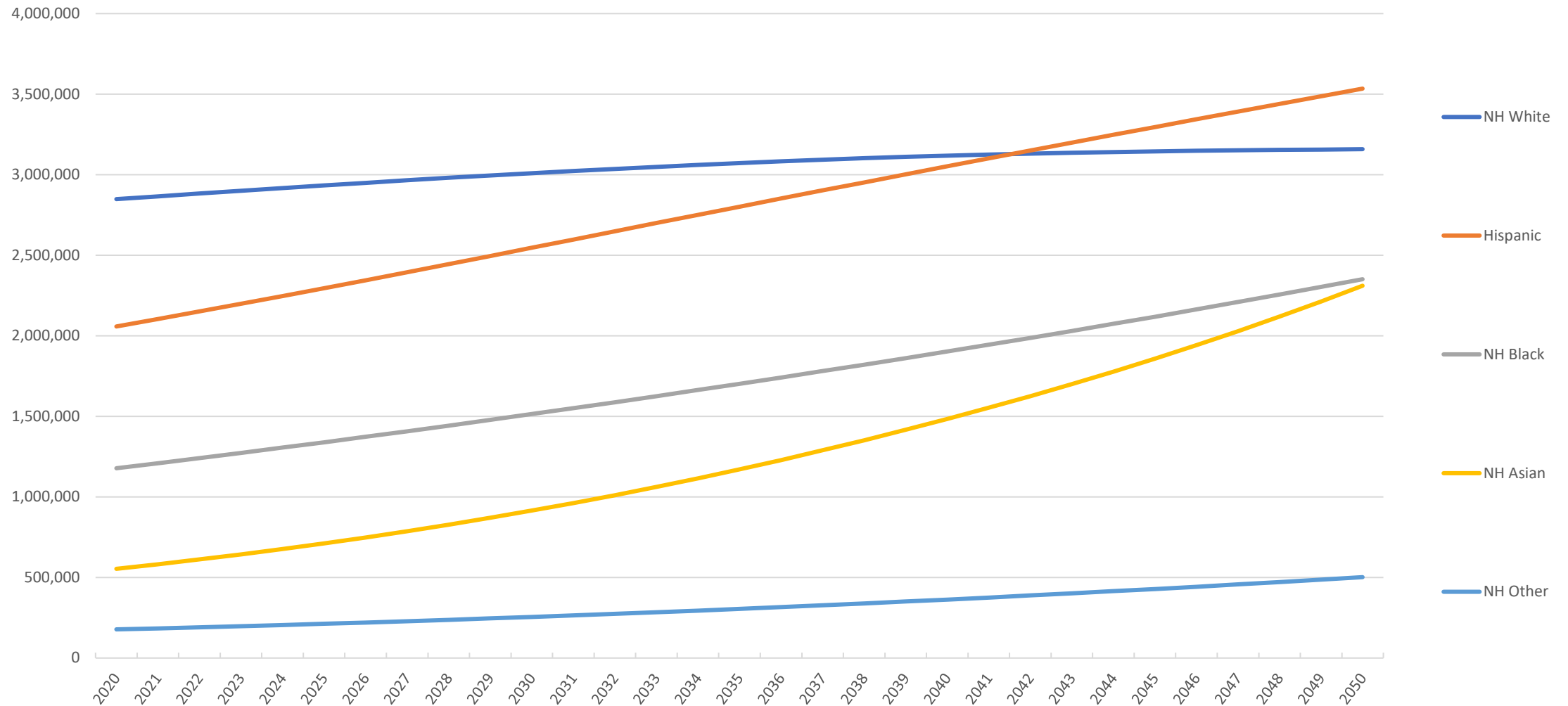
Source: Texas Demographic Center, 2022 Population Projections

# Projected Population by Race and Ethnicity, Texas 2010-2050



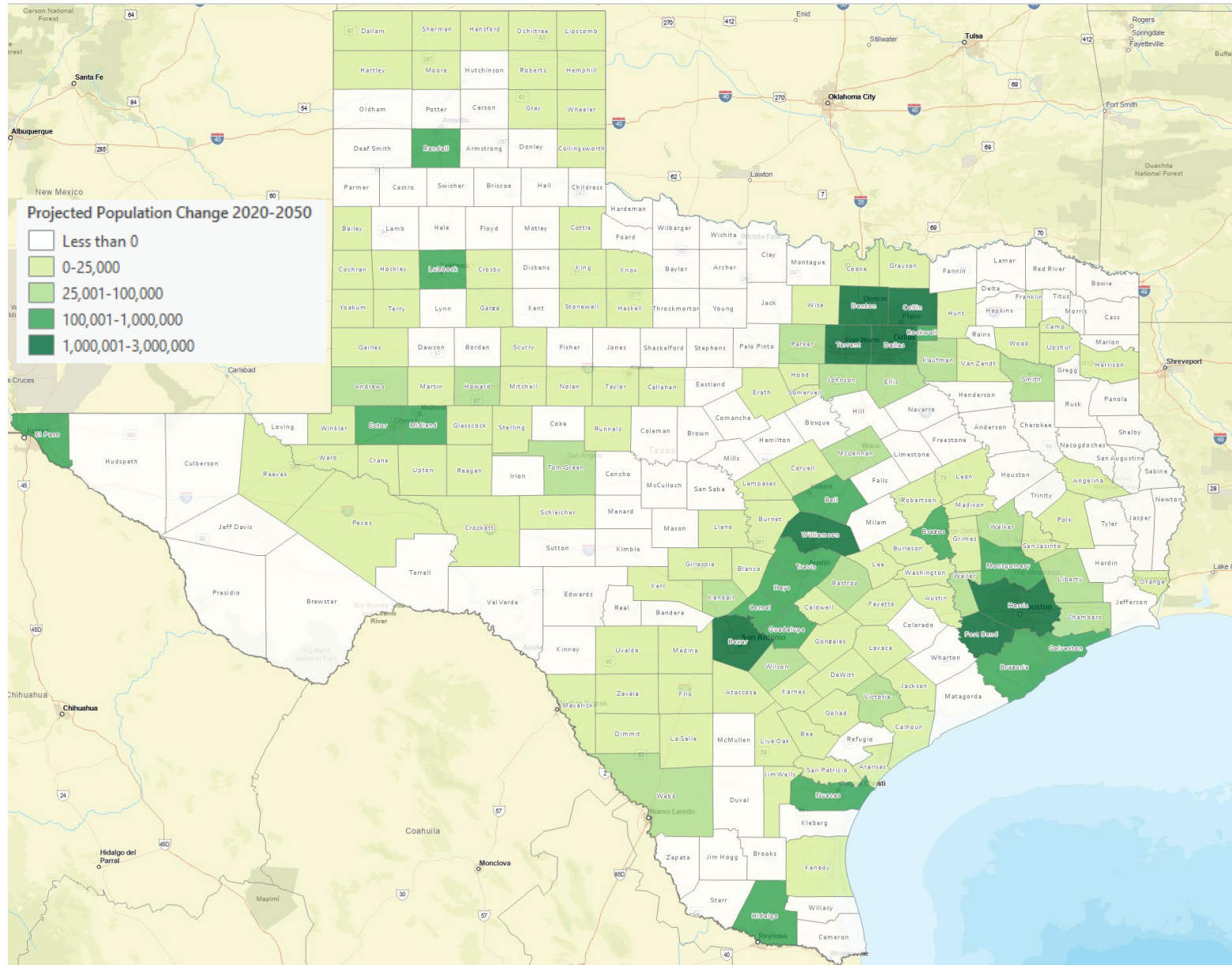


# Projected Population by Race and Ethnicity for Dallas, Tarrant, Collin and Denton Counties Combined, Texas 2020-2050

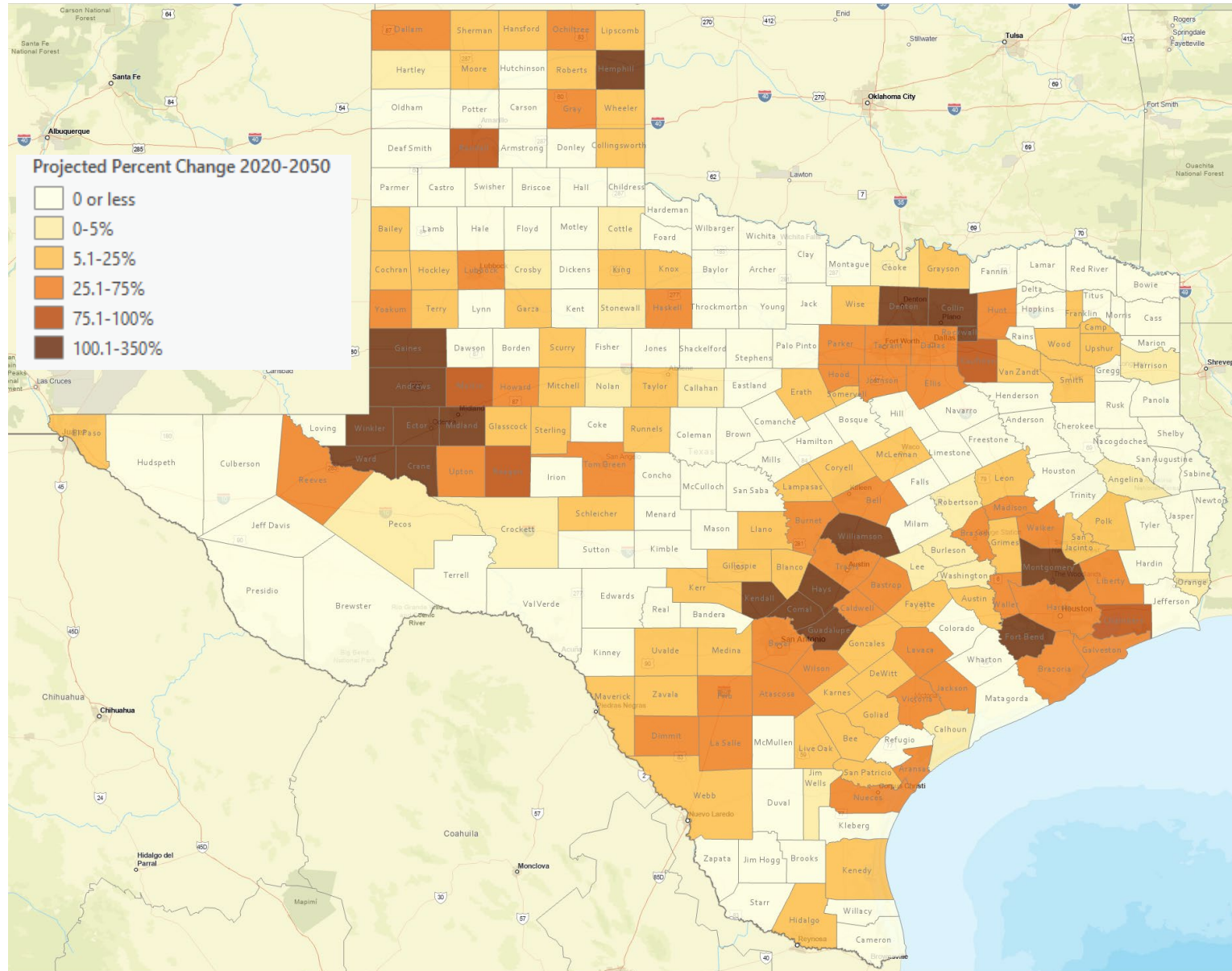


Source: Texas Demographic Center 2018 Population Projections

# Projected Population Change, Texas Counties, 2020-2050



# Projected Percent Population Change, Texas Counties, 2020-2050







Visit our website  
[demographics.texas.gov](https://demographics.texas.gov)



# Interactive Maps

demographics.texas.gov/



## Census 2020



Census 2020

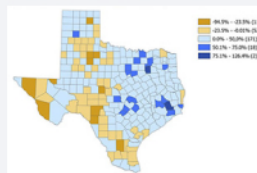


Redistricting Resources

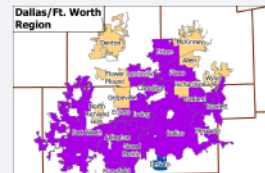
## TDC Decennial Census Infographics



Who Contributed to Texas' Population Growth? 2010-2020

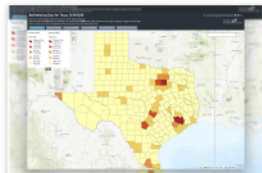


Population Change for Texas Counties, 2010-2020



Texas Places, 2010-2020 Ethnic and Racial Diversity Continues to Grow

## TDC Decennial Census Interactive Tools



Redistricting Data for Texas Counties, 2010-2020



Redistricting Data for Texas Counties, 2000-2020



Redistricting Data for Texas Places, 2000-2020

### Redistricting Data for Texas, 2010-2020

Source: U.S. Census Bureau, Decennial Census P.L. 94-171 Redistricting Data.  
 Note: Swipe from left to right to highlight changes in population from 2010-2020.  
 Zoom in to see county, tract, block group and block level data. Click on the map to learn more.

Texas Demographic Center

[Total Population](#)
[Percent Hispanic](#)
[Percent NH Black](#)
[Percent NH White](#)
[Percent NH Asian](#)
[Percent NH Other Race](#)

#### Total Population, 2010-2020

Texas Counties, Census Tracts, Block Groups and Blocks

County, 2010	County, 2020
Greater than 2,000,000	Greater than 2,000,000
1,000,001 - 2,000,000	1,000,001 - 2,000,000
500,001 - 1,000,000	500,001 - 1,000,000
100,001 - 500,000	100,001 - 500,000
Less than 100,000	Less than 100,000

Map showing population change by county from 2010 to 2020. The map is color-coded according to the legend, with red indicating the highest population change (greater than 2,000,000) and yellow indicating the lowest (less than 100,000). Major cities and geographical features are labeled on the map.

Esri, HERE, Garmin, FAO, NOAA, USGS, EPA, NPS



# Follow us on social media!

We post every Monday



@TexasDemography



Texas Demographic Center



texasdemographiccenter



Texas Demographic Center

Texas Demographic Center @TexasDemography · 20h  
 Texas has made its mark in the U.S. top 10, with four cities with the largest numerical growth and another four achieving the fastest growth rates!  
 #CensusData #PopulationEstimates #PopulationGrowth #Texas

**Fastest-Growing Cities in Texas From July 2021 to July 2022**

National Ranking	City/Town	Growth Rate
1	Georgetown	14.4
3	Ft. Jule	10.9
9	Lubbock	10.9
10	Little Elm	8.0
13	Conroe	6.3
15	New Braunfels	5.7
17	Temple	4.5
27	Allen	4.2
29	Pflug	4.0
30	Burleson	3.7

**Texas Cities/Towns with the largest numerical growth from 2021 to 2022 and their ranks in the U.S.**

National Ranking	City/Town	Population Change
1	Fort Worth	13,370
3	San Antonio	13,889
4	Houston	11,223
5	Georgetown	10,887
11	Dallas	8,833
13	Pflug	8,506
20	Lubbock	7,582
23	Conroe	5,967
26	New Braunfels	5,675
32	Ft. Jule	5,532

Texas Demographic Center  
 May 15 at 12:59 PM · 🌐

We can see the changing demographics between foreign born and native born within the AAPI community. Data from the 2021 5-year ACS Public Use Microdata Sample suggests that 68% of the AAPI population was born outside of the U.S., compared to 17% among all Texas. However, more AAPIs were born in the U.S. among the younger generations. #AAPIHeritageMonth

**ASIAN AMERICAN & PACIFIC ISLANDER HERITAGE MONTH**

**Estimated AAPI Population in Texas by Nativity and Age Group**

Age Group	Foreign-Born	Native-Born
65+	127,883	7,839
36-64	818,529	16,782
25-35	254,084	71,023
19-24	54,088	16,817
0-18	71,438	275,083

texasdemographiccenter

**HAPPY TEACHER APPRECIATION WEEK 2023**

**The Ratio of School Age Population to the Number of Teachers Employed in Texas has Declined**

Year	School-Age Population/Children	Teachers in Texas	SchoolAge Pop/Teacher Ratio
2012	~5,500,000	~17.8	~17.8
2013	~5,500,000	~17.6	~17.6
2014	~5,500,000	~17.4	~17.4
2015	~5,500,000	~17.2	~17.2
2016	~5,500,000	~17.0	~17.0
2017	~5,500,000	~16.8	~16.8
2018	~5,500,000	~16.6	~16.6
2019	~5,500,000	~16.4	~16.4
2020	~5,500,000	~16.2	~16.2


Texas Demographic Center  
 155 followers  
 1mo · 🌐

In 2022, Texas's population surpassed 30 million (30,029,572) and ranks second in the country behind California. Learn more about the population growth in Texas in our latest infographic. <https://bit.ly/3ziJPVs>

**In the Wake of the Pandemic, Texas Population Growth Ranks High in the U.S.**

Infographic

# Lloyd Potter, Ph.D.

 (210) 458-6530

 [TDC@UTSA.edu](mailto:TDC@UTSA.edu)

 [demographics.texas.gov](http://demographics.texas.gov)

 @TexasDemography



Texas  
Demographic  
Center

