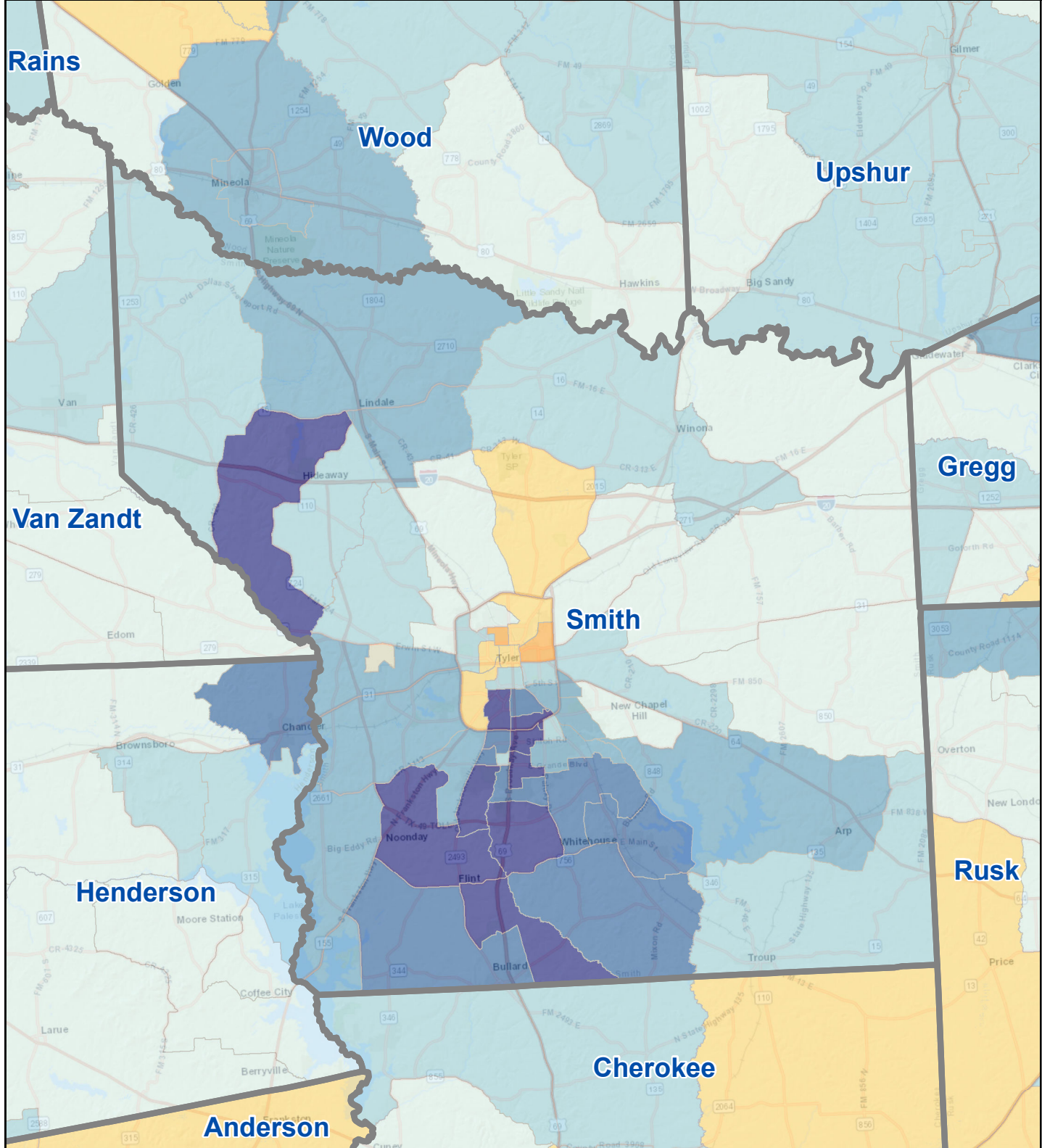


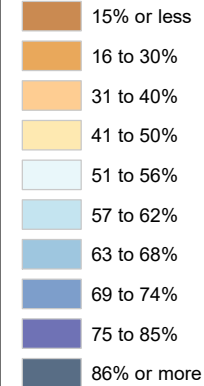
Census Bureau 2020 Self-Response Rates in Texas Census Tracts Smith County

Updated: 10/16/2020



Census Self-Response Rate, 2020

CensusTract



Census Self-Response Rates

US 2010	66.5%	
US 2020	66.9%	
Texas 2010	64.4%	
Texas 2020	62.8%	
County 2010	65.8%	
County 2020	62.9%	
Households in county that have not responded		28,639
Households needed to respond to reach 2010 rate		2,239

Data Source:

U.S. Census Bureau, 2020 Census Self-Response Rates
(<https://2020census.gov/en/response-rates.html>)



<https://demographics.texas.gov>