

Update on Geographic Area Programs for the 2020 Census

Michael Ratcliffe
Geography Division
US Census Bureau

Texas Demographic Conference
Austin, Texas
June 5, 2019



U.S. Department of Commerce
Economics and Statistics Administration
U.S. CENSUS BUREAU
[census.gov](https://www.census.gov)



Update on Geographic Area Programs

In this presentation:

- Geographic Area Programs for the 2020 Census
- Update on the Participant Statistical Areas Program
 - Census Designated Places in Texas
 - Colonias and Census Designated Places
- Changes to Metropolitan and Micropolitan Statistical Areas
- Thoughts on Urban and Rural

Geographic Area Programs for the 2020 Census

- Boundary and Annexation Survey
 - Annual review and update of boundaries for states, counties, and incorporated places; new incorporations, disincorporations, and changes in status.
- Participant Statistical Areas Program
 - Review and update of block groups, census tracts, census designated places, and census county divisions as well as tribal statistical areas.
- Boundary Validation Project
 - Opportunity for highest elected officials to review and approve boundaries for use in tabulating 2020 Census data.
- ZIP Code Tabulation Area (ZCTA) Update
- Public Use Microdata Areas (PUMA) Delineation
- Urban Area Delineation

Participant Statistical Areas Program Overview

- Allows invited participants to review and update selected statistical area boundaries for 2020 Census data tabulation using Census Bureau criteria and guidelines.

Standard statistical geographies:

- Census tracts (CTs)
- Block groups (BGs)
- Census designated places (CDPs)
- Census county divisions (CCDs) in selected states

Tribal statistical geographies:

- Tribal census tracts (TCTs)
- Tribal block groups (TBGs)
- Census designated places (CDPs)
- Tribal Designated Statistical Areas (TDSAs)
- State Designated Tribal Statistical Areas (SDTSAs)
- Alaska Native village statistical areas (ANVSAs)
- State reservations (legal entities)
- Oklahoma tribal statistical areas (OTSAs) and associated tribal subdivisions.

- The Census Bureau uses the defined statistical areas for the 2020 Census, American Community Survey, and the Economic Census data.

PSAP Verification High Level Timeline

Month	Activities
June 2019	Delineation submission deadline (end of May).
June-September 2019	Finalize processing of PSAP submissions and updating of the TIGER database.
October 2019	Complete and approve verification materials for participants.
January 2020	Verification materials mail out. Begin participant verification.
April 2020	Verification update submission deadline.
July 2020	Complete processing and updating of the TIGER database with verification updates.

Participant Statistical Areas Program (PSAP) Overview

<https://www.census.gov/programs-surveys/decennial-census/about/psap.html>

Decennial Census of Population and Housing

About the Decennial Census

[Why a Census?](#)

[History of the Census](#)

[Census in the Constitution](#)

[Decennial and the American Community Survey \(ACS\)](#)

[Coverage Measurement](#)

[Local Update of Census Addresses Operation \(LUCA\)](#)

[New Construction Program](#)

Participant Statistical Areas Program (PSAP)

[Redistricting](#)

[Voting Rights](#)

[Related Sites](#)

[Information for Respondents](#)

Participant Statistical Areas Program (PSAP)

On this page:

- [2020 Census Participant Statistical Areas Program \(PSAP\)](#)
- [2020 Census PSAP Information Guide](#)
- [Who is my 2020 Census PSAP contact?](#)
- [Why Participate in the 2020 Census PSAP?](#)
- [What's New?](#)
- [What is the 2020 Census PSAP Schedule?](#)
- [2020 Census PSAP Delineation Materials](#)
- [Training Webinar Information](#)
- [2020 Census PSAP *Federal Register* Notice](#)
- [Where Can I Find More Information?](#)
- [Contact Information](#)

Census Bureau Internal Review

- The Census Bureau reviewed **census tracts and block groups** in nearly all counties, identifying suggested changes and adjustments to help streamline the review and update on the part of primary participants.
- New for 2020 PSAP, based on feedback and lessons learned from the 2010 PSAP.
- Reduces the need for boundary corrections.
- Participants choose either the “2020 Proposed Plan” or “2010 Geographies” when using the Modify Area Feature button in the Geographic Update Partnership Software.

Census Tract Thresholds

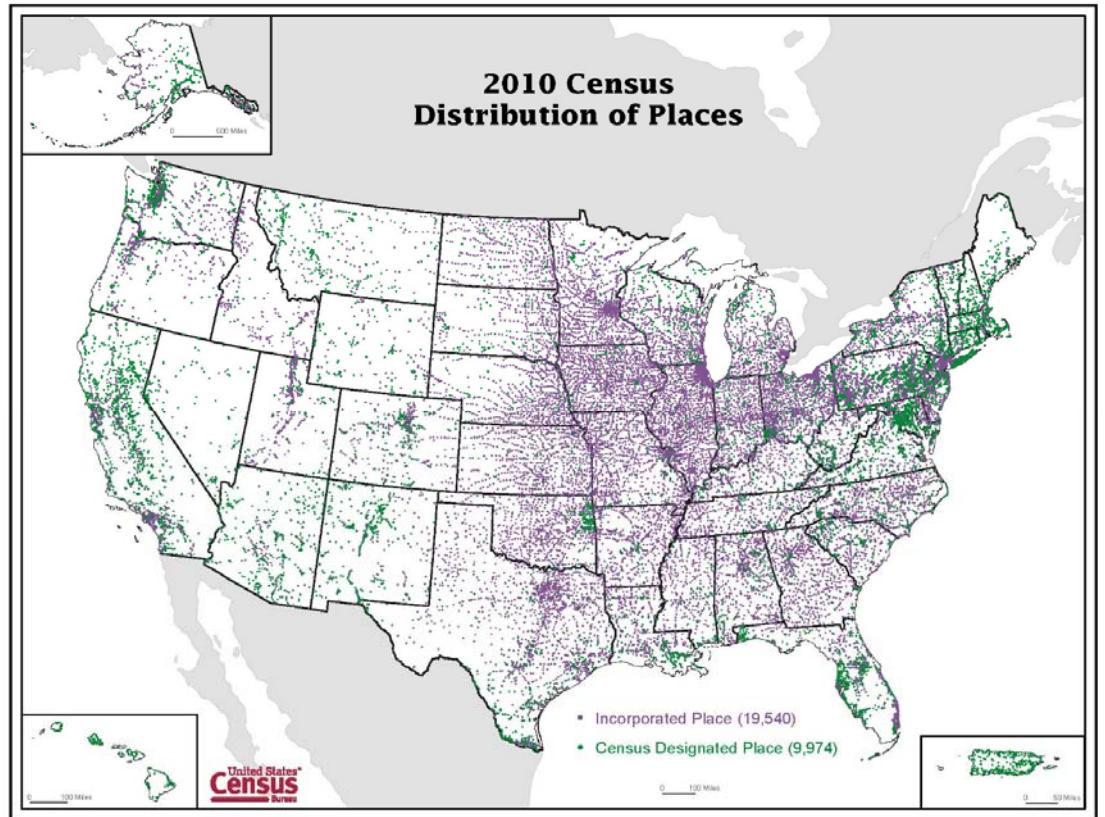
Census Tract Types	Description	Population Thresholds	Housing Unit Thresholds	Area Measurement Thresholds	Employment Threshold
Standard Census Tract	Small statistical subdivisions of counties; emphasis on comparability over time to facilitate longitudinal analysis.	Optimum: 4,000 Min: 1,200 Max: 8,000	Optimum: 1,600 Min: 480 Max: 3,200	None	NA
Special Use Census Tract	A census tract encompassing an employment center, large airport, public park, public forest, or large water body with no (or very little) population or housing units.	None (or very little) or within the standard census tract threshold	None (or very little) or within the standard census tract threshold	At least comparable in size to surrounding standard census tracts	Suggested minimum of 1,200 workers or jobs when encompassing employment centers.

Block Group – Thresholds

Block Group Types	Description	Population Thresholds	Housing Unit Thresholds	Area Measurement Thresholds	Employment Threshold
Standard Block Groups	Subdivisions of census tracts; smallest geographic area for which ACS data are tabulated and disseminated.	Min: 600 Max: 3,000	Min: 240 Max: 1,200	None	NA
Special Use Block Groups	A block group, usually coextensive with a special use census tract, encompassing an employment center, large airport, public park, public forest, or large water body with no (or very little) population or housing units.	None (or very little) or within the standard block group thresholds	None (or very little) or within the standard block group thresholds	At least comparable in size to surrounding standard block groups	Suggested minimum of 600 workers or jobs.

Census Designated Places (CDPs) – Overview

- Statistical geographic entities representing closely settled, unincorporated communities that are locally recognizable and identifiable by name.
- Statistical equivalents of incorporated places.
- 538 CDPs defined in Texas for the 2010 Census.
- 524 CDPs, as of 2018.
- 49 new CDPs defined for the 2020 Census.



New Texas CDPs for the 2020 Census (as of May 30)

Alamo Beach CDP

Alanreed CDP

Bivins CDP

Bledsoe CDP

Bluff Dale CDP

Brazos CDP

Briggs CDP

Brookston CDP

Bushland CDP

Carlton CDP

Carter CDP

Dennis CDP

Dime Box CDP

East Columbia CDP

Farnsworth CDP

Flat CDP

Forest Heights CDP

Garner CDP

Glazier CDP

Hamshire CDP

Huckabay CDP

Lamkin CDP

Lelia Lake CDP

Lingleville CDP

Little Cypress CDP

Loving CDP

Magnolia Beach CDP

May CDP

McLeod CDP

Mosheim CDP

Mound CDP

Paige CDP

Pendleton CDP

Petty CDP

Plum CDP

Proctor CDP

Ringgold CDP

Santo CDP

Sargent CDP

Sheffield CDP

Shelbyville CDP

Summerfield CDP

Umberger CDP

Waka CDP

Washburn CDP

Whitharral CDP

Wildorado CDP

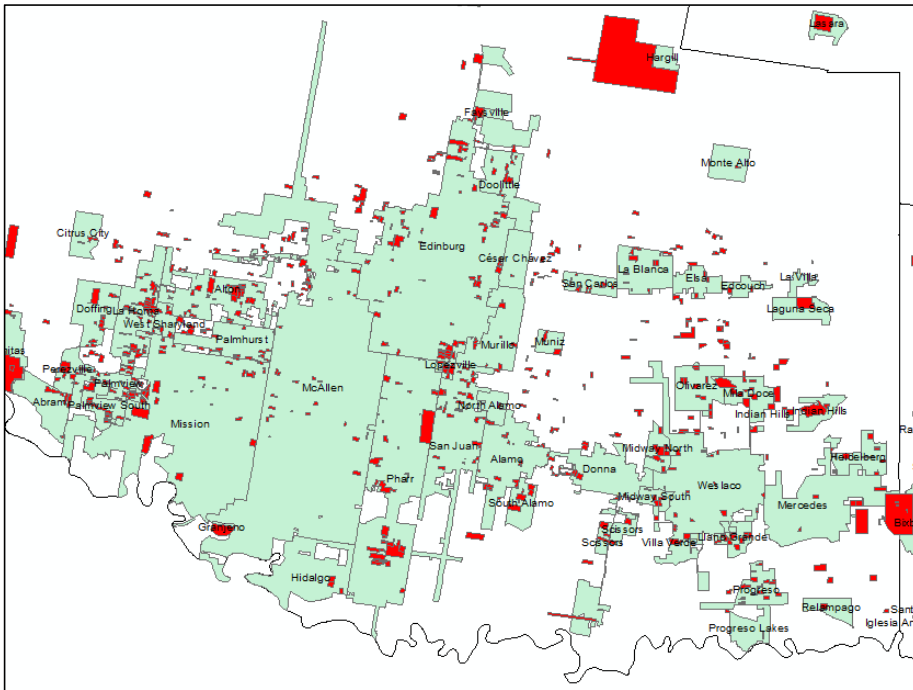
Willow Grove CDP

Census Designated Places and Colonias

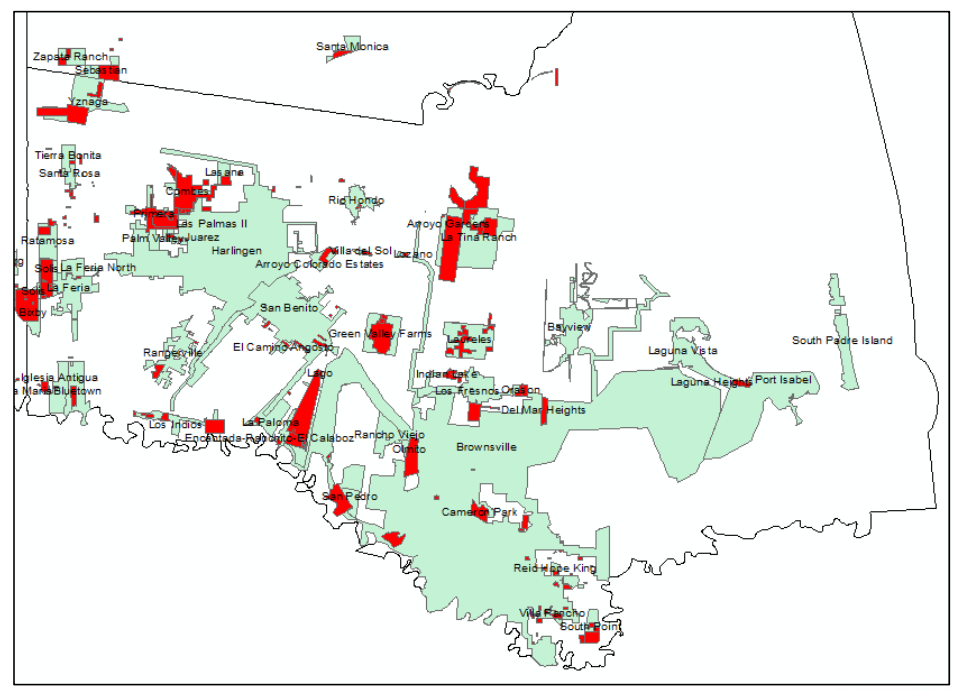
- For the 2010 Census, 245 CDPs contained approximately 750 colonias.
- We have received a boundary file with information for 2,070 colonias and are currently reviewing it in relation to current incorporated places and CDPs.

Texas Places and Colonias

Hidalgo County Places and Colonias

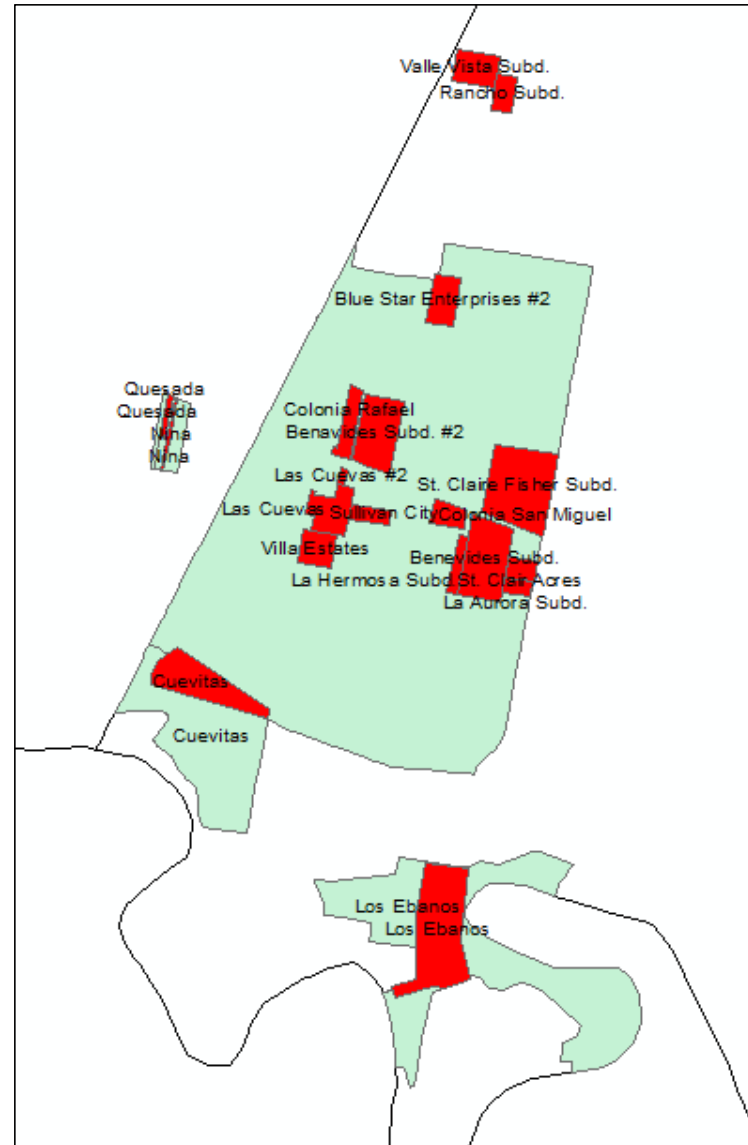


Cameron County Places and Colonias



Relationships between colonias and places

- Sullivan City contains 12 colonias.
- Cuevitas CDP contains Cuevitas colonia.
- Los Ebanos CDP contains Los Ebanos colonia.
- Quesada CDP contains Quesada colonia.
- Nina CDP contains Nina colonia.
- Valle Vista Subdivision and Rancho Subdivision colonias are not within any CDPs.



Metropolitan and Micropolitan Statistical Areas Changes, September 2018

Changes to county components of metropolitan and micropolitan statistical areas:

- Alice micro area added Duval County.
- Beaumont-Port Arthur metro area lost Newton County.
- Corpus Christi metro area lost Aransas County (to new Rockport micro area).
- Dallas-Fort Worth metro area lost Hood County (to new Granbury micro area) and Somervell County.
- Huntsville micro area lost Trinity County.
- Longview metro area added Harrison County (formerly Marshall micro area).
- Mount Pleasant micro area added Camp County.
- Pampa micro area added Roberts County.
- Pecos micro area added Loving County.
- San Angelo metro area added Sterling County.

Name change: Rio Grande City Micropolitan Statistical Area is now Rio Grande City-Roma.

Metropolitan and Micropolitan Statistical Areas Changes, September 2018

New micropolitan statistical areas:

- Granbury, TX (Hood County)
- Pearsall, TX (Frio County) [added in April 2018]
- Rockport, TX (Aransas County)

Deleted micropolitan statistical area:

- Marshall, TX (Harrison County– merged with Longview Metropolitan Statistical Area)

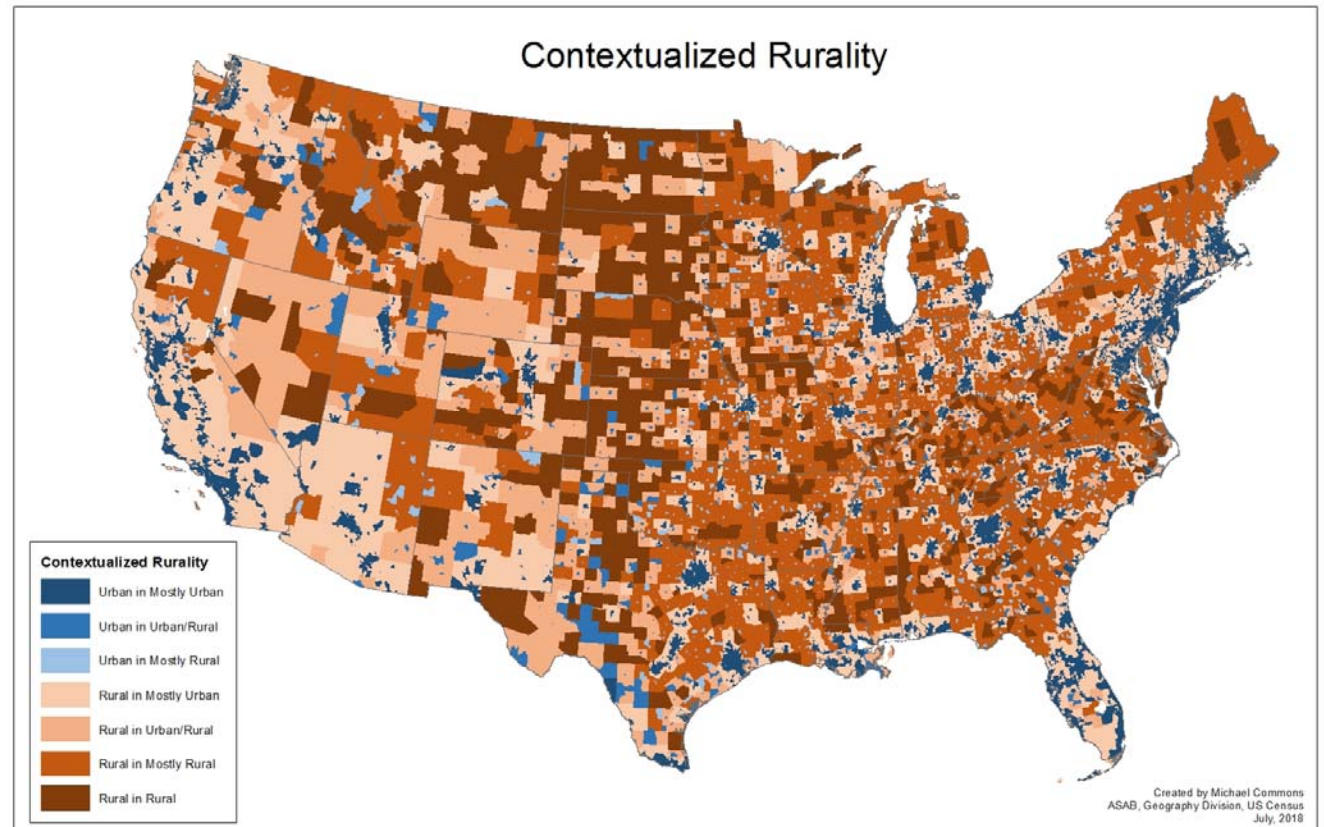
Urban and Rural Classification

Reviewing criteria for the 2020 Census delineation of urban and rural areas:

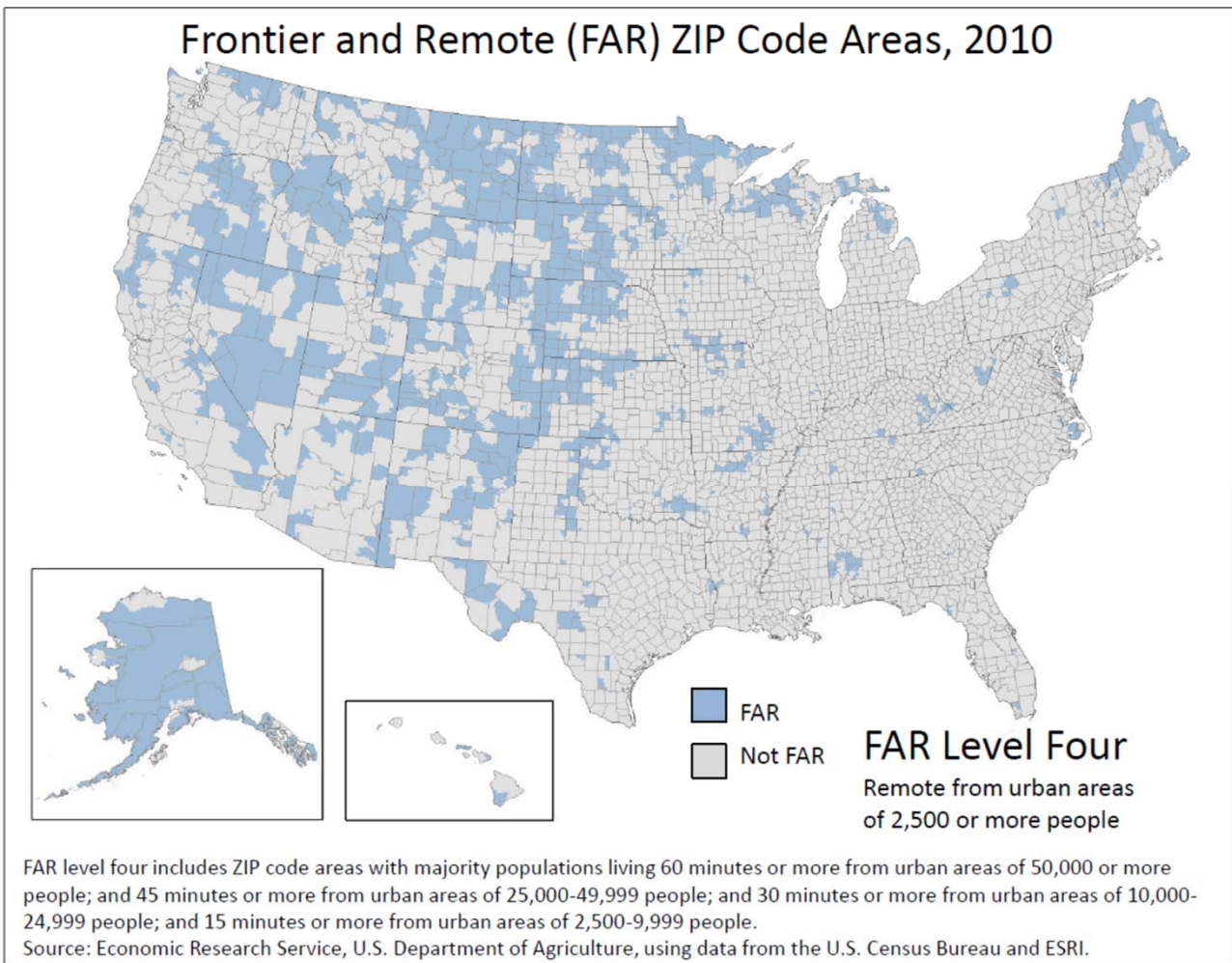
- We are reviewing the hop, jump, and impervious surface aspects of the criteria.
 - Return maximum jump distance to 1.5 miles.
 - Review the sequence in which hop, jump, and impervious surface criteria are applied.
- Is 2,500 still an appropriate minimum threshold for identifying urban areas?
- In addition, further consideration is needed regarding ways to identify and classify different kinds of rural communities, settlement patterns, and levels of rurality:
 - Rural Metropolitan, Rural Micropolitan, Rural Non-Metro/Micro?
 - Distinctions based on population density?
 - Distinctions based on proximity to/distance from urban centers of various sizes?
 - Categories that provide more insight into context?

Considering New Approaches to Defining Urban and Rural Areas

- Incorporates the Tract-Level Urban/Rural classification into the Proportional Rurality classification
 - Examples:
 - Rural Tracts within Mostly Rural Counties
 - Rural Tracts within Mostly Urban Counties
 - Urban Tracts within Mostly Rural Counties



Frontier and Remote Areas Measuring Distance and Isolation



Thank You

Michael Ratcliffe

Assistant Division Chief for Geographic Standards, Criteria, Research, and Quality

Geography Division

United States Department of Commerce
Bureau of the Census
4600 Silver Hill Rd.
Suitland, Maryland 20233

Office 301-763-8977

michael.r.ratcliffe@census.gov