

Understanding Statistical Geography

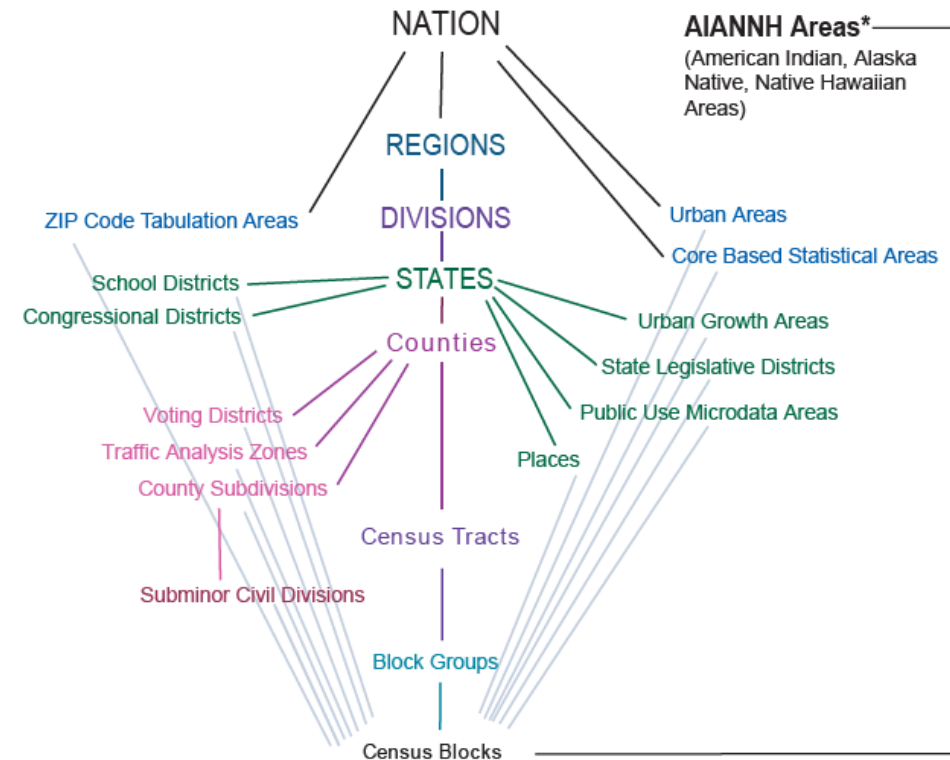
Jim Castagneri

Lacey Loftin

Overview of Census Geography

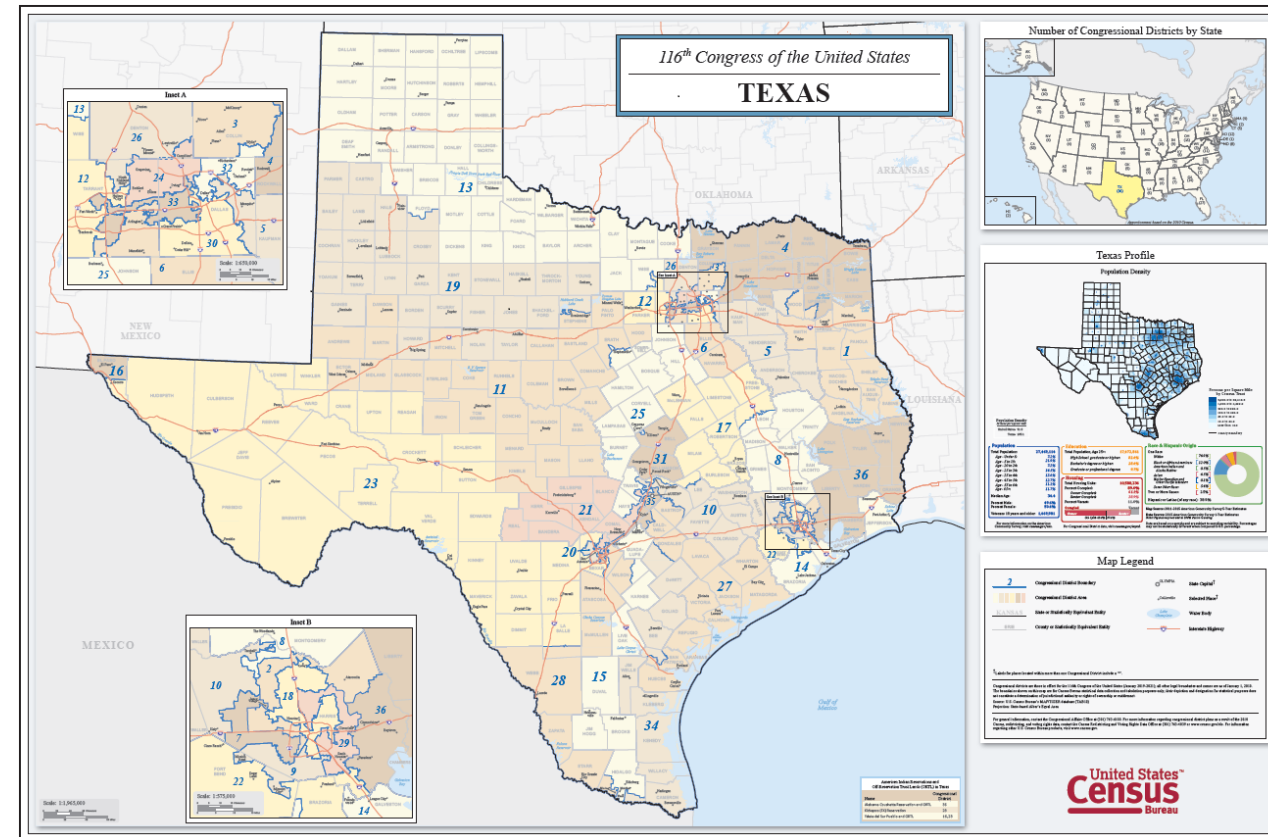
Two main types of Census geography:

- Legal or Administrative
- Statistical



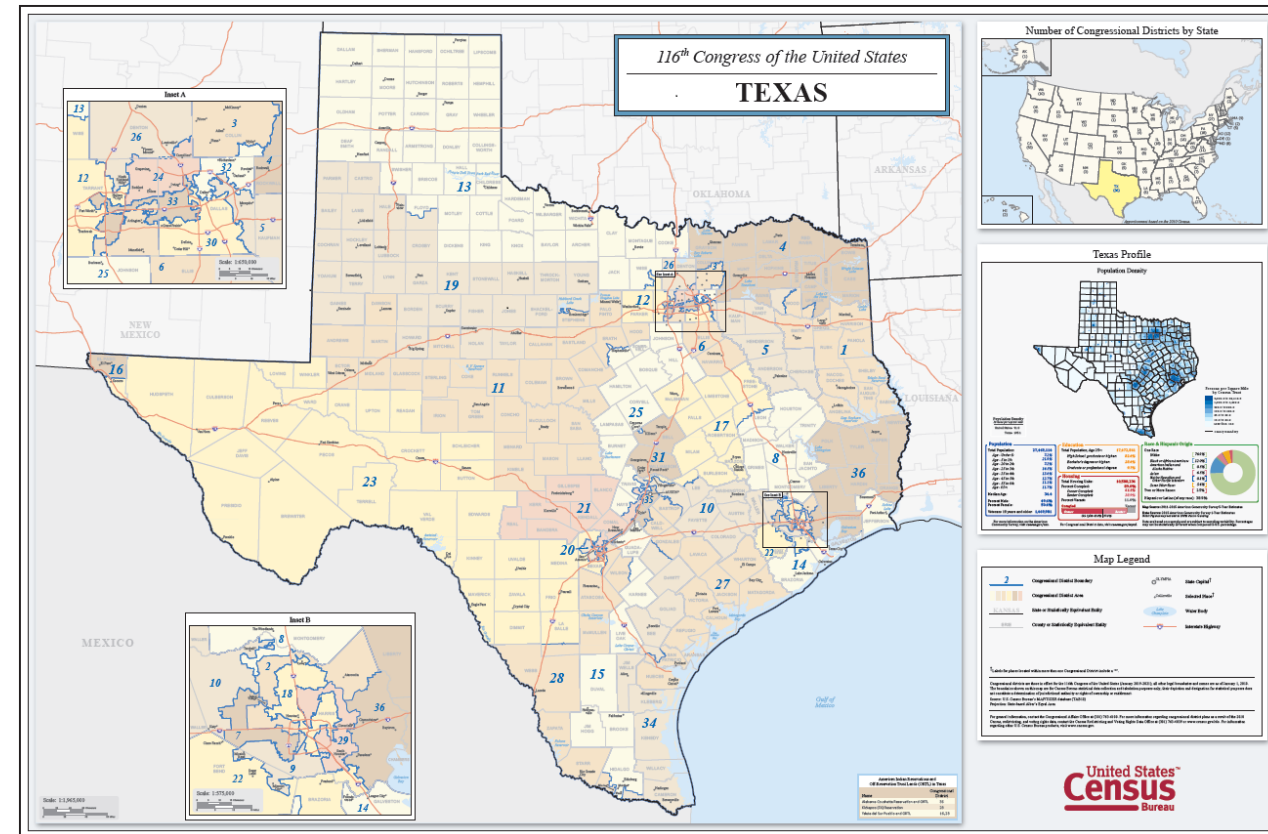
Basics of Legal or Administrative Geography

- Have a Highest Elected Officials
- Boundaries change at the will of the governing body
- New geographies can be formed by a new incorporation



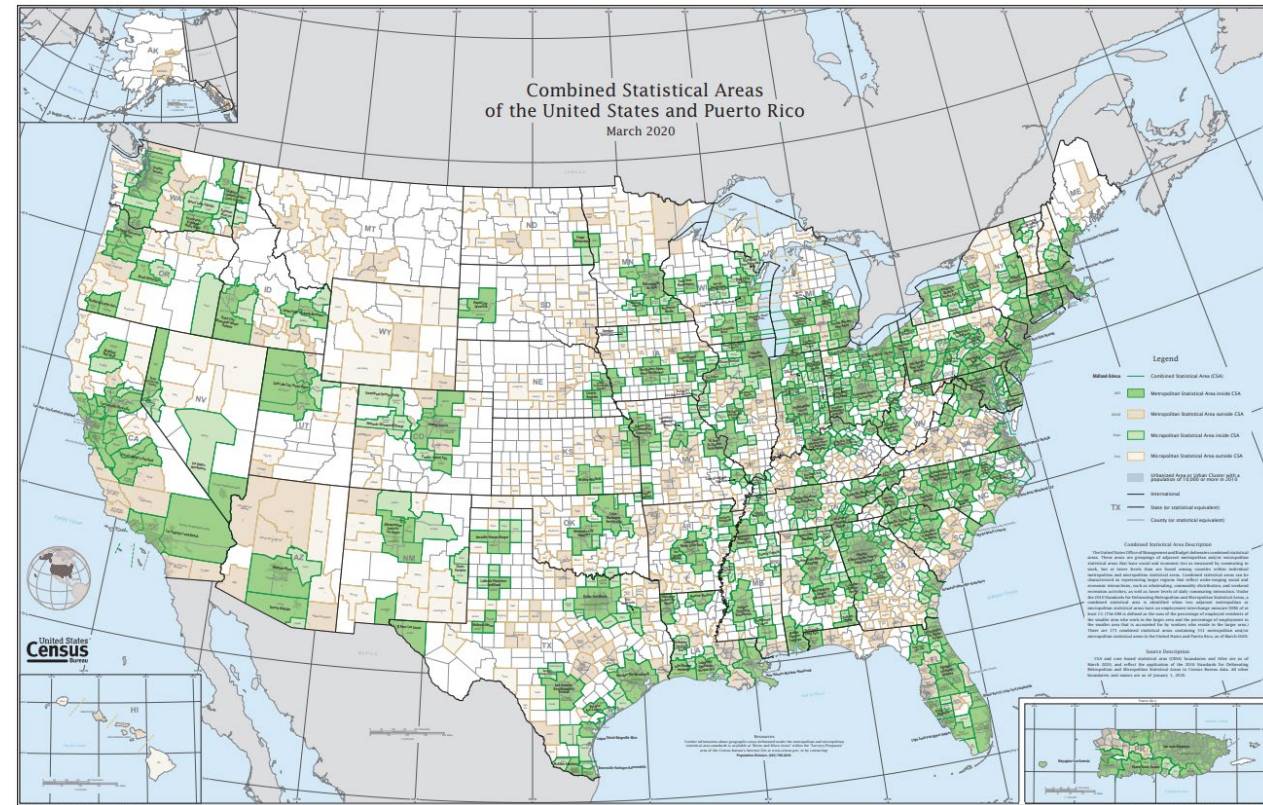
Examples of Legal or Administrative Geography

- States
- American Indian Reservations
- Counties
- Places
- Congressional Districts
- School Districts
- Voting Districts



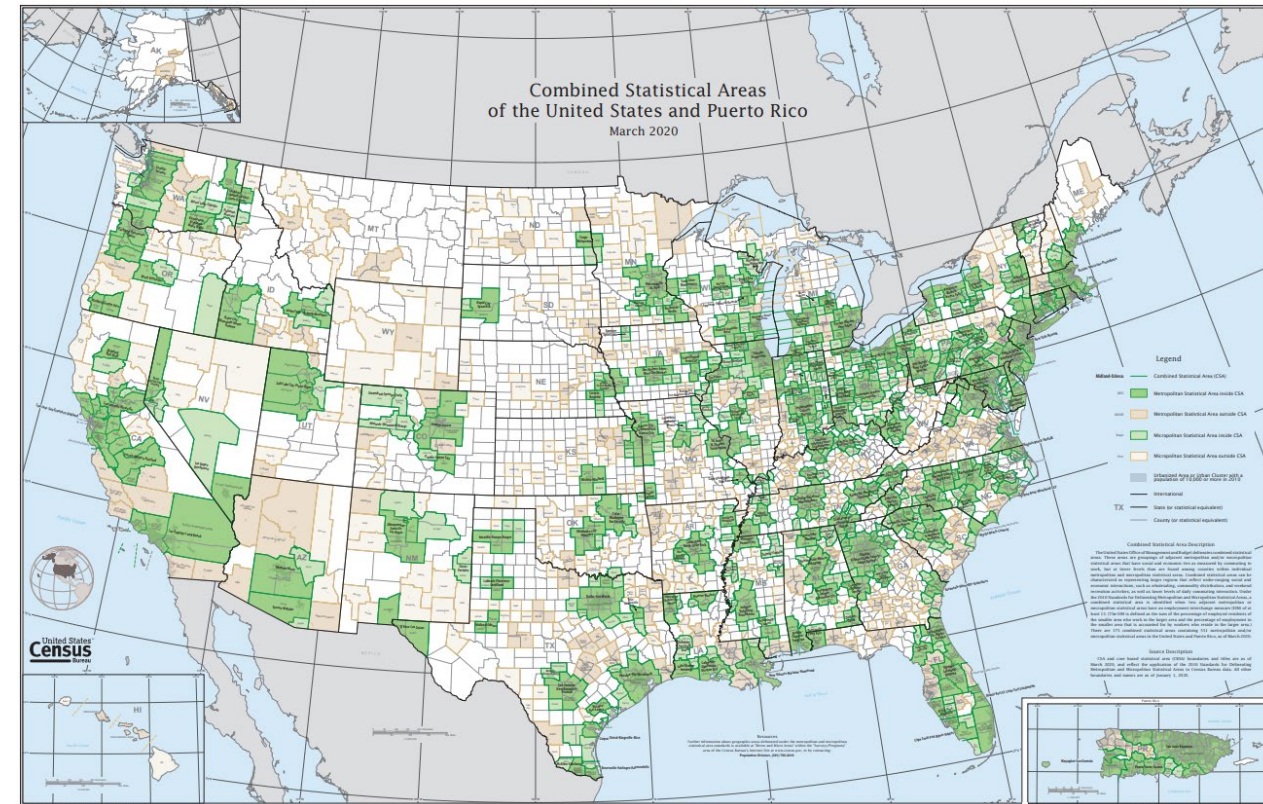
Basics of Statistical Geography

- No gaps and no overlaps
- Boundaries are created and maintained by the U.S. Census Bureau
- Are created and updated only for statistical purposes
- The U.S. Census Bureau is the geographical data steward for the U.S. Government



Examples of Statistical Geography

- State
- County
- Census Tract
- Census Block Group
- Census Block
- Census Designated Places (CDPs)
- Census County Divisions

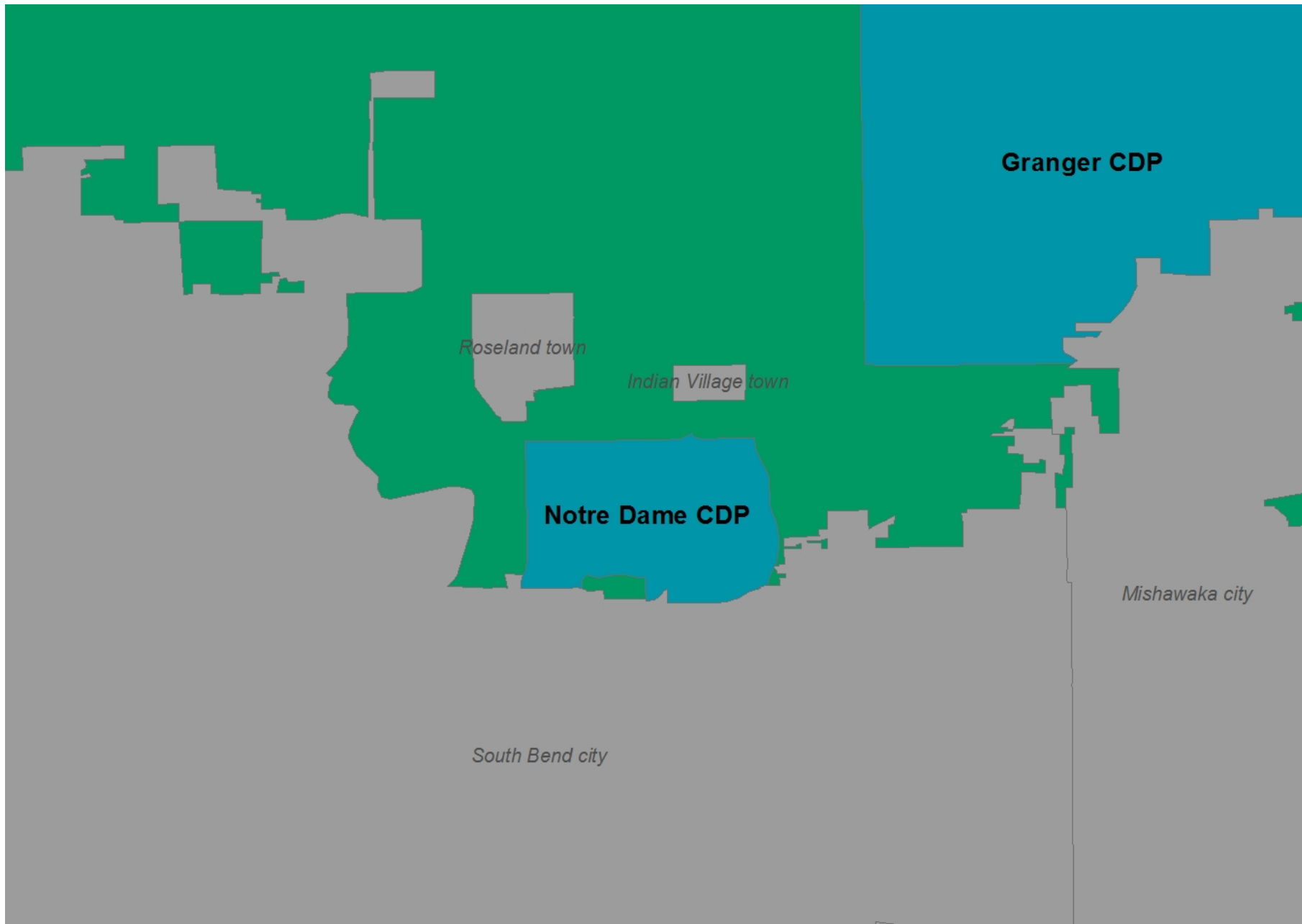


Tribal Statistical Geographies

- Tribal Census Tracts (TCTs).
- Tribal block groups (TBGs).
- Census Designated Places (CDPs).
- Tribal Designated Statistical Areas (TDSAs).
- State Designated Tribal Statistical Areas (SDTSAs).
- Oklahoma Tribal Statistical Areas (OTSAs).
- Statistical tribal subdivisions.

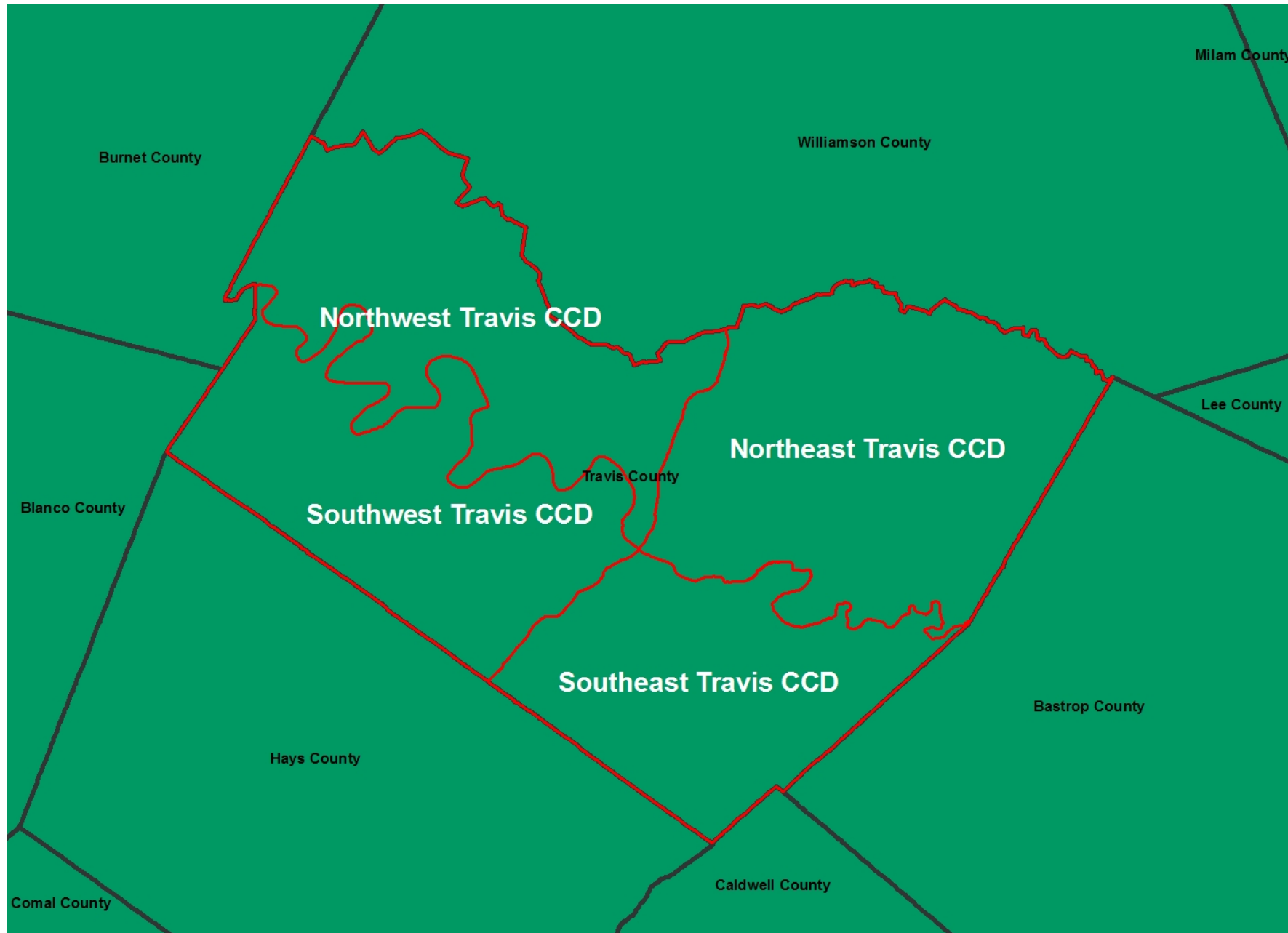
Census Designated Places

Statistical area	Primary purpose	Nationwide wall-to-wall coverage	Geography nests within	2020 Census population criteria	2020 Census housing unit criteria
Census designated places (CDPs)	Place-level statistics for well-known, closely settled named localities that are not part of an incorporated place. Mix of residential and commercial areas.	No, CDPs capture distinct communities.	State	Should have population during at least one entire season (at least 3 consecutive months) of the year.	Should have higher housing unit (or population) density than surrounding area. If less than 10 housing units, Census Bureau will ask for an explanation.



Census County Divisions

Statistical area	Primary purpose	Nationwide wall-to-wall coverage	Geography nests within	2020 Census population criteria	2020 Census housing unit criteria
Census county divisions (CCDs)	<p>Provide data for sub-county units that have stable boundaries and recognizable names.</p> <p>Usually represents one or more communities, economic centers, or major land uses.</p>	<p>Partial—CCDs and minor civil divisions (MCDs) together provide national coverage.</p> <p>CCDs exist in 21 states.²</p>	County	None	None



Census Tracts

Statistical area	Primary purpose	Nationwide wall-to-wall coverage	Geography nests within	2020 Census population criteria	2020 Census housing unit criteria
CENSUS TRACTS					
Standard census tract	Boundary continuity. Data comparability.	Yes	County	Optimum: 4,000 Minimum: 1,200 Maximum: 8,000	Optimum: 1,600 Minimum: 480 Maximum: 3,200
Special use	Distinguish areas of little or no population that have a specific type of land use. Large water bodies.	No	County	Population Threshold = Little/None or must be within the standard census tract threshold. Area Measurement Thresholds: <ul style="list-style-type: none"> ▪ Within Urban Area = 1 sq. mile. ▪ Outside Urban Area = 10 sq. miles. ▪ Inland water body = 100 sq. miles. ▪ Water body not coextensive with a water only census tract = none. 	

Block Groups

Statistical area	Primary purpose	Nationwide wall-to-wall coverage	Geography nests within	2020 Census population criteria	2020 Census housing unit criteria
BLOCK GROUPS					
Standard block group	<p>Form the geographic framework within which census blocks are numbered.</p> <p>Smallest area for which demographic characteristics are produced from the American Community Survey (ACS).</p>	Yes	Census Tract	<p>Minimum: 600</p> <p>Maximum: 3,000</p>	<p>Minimum: 240</p> <p>Maximum: 1,200</p>

Country



State

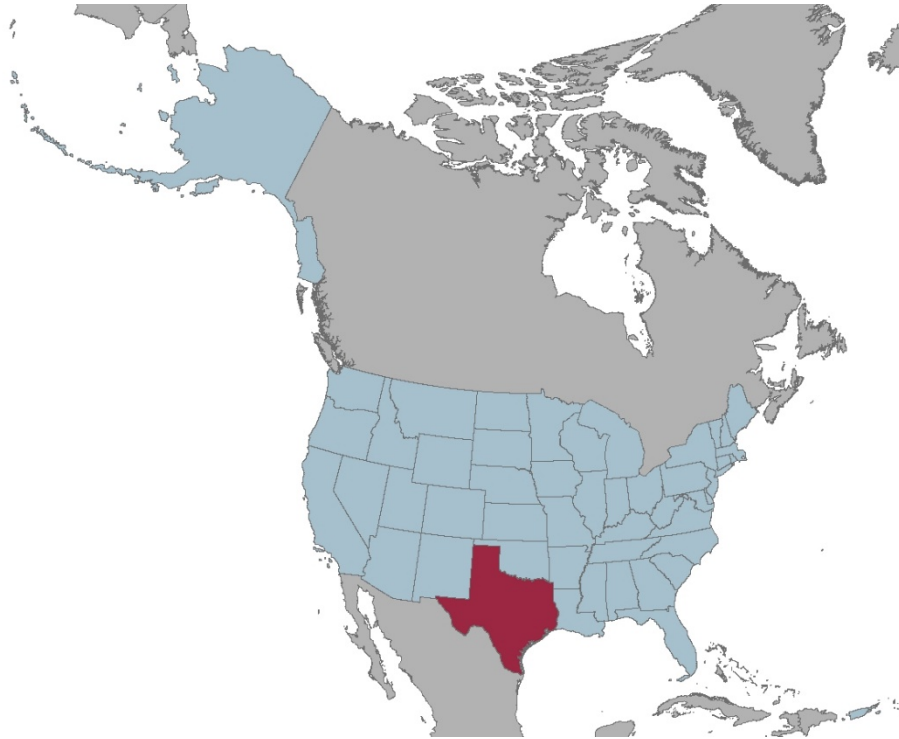
County

Tract

Block
Group

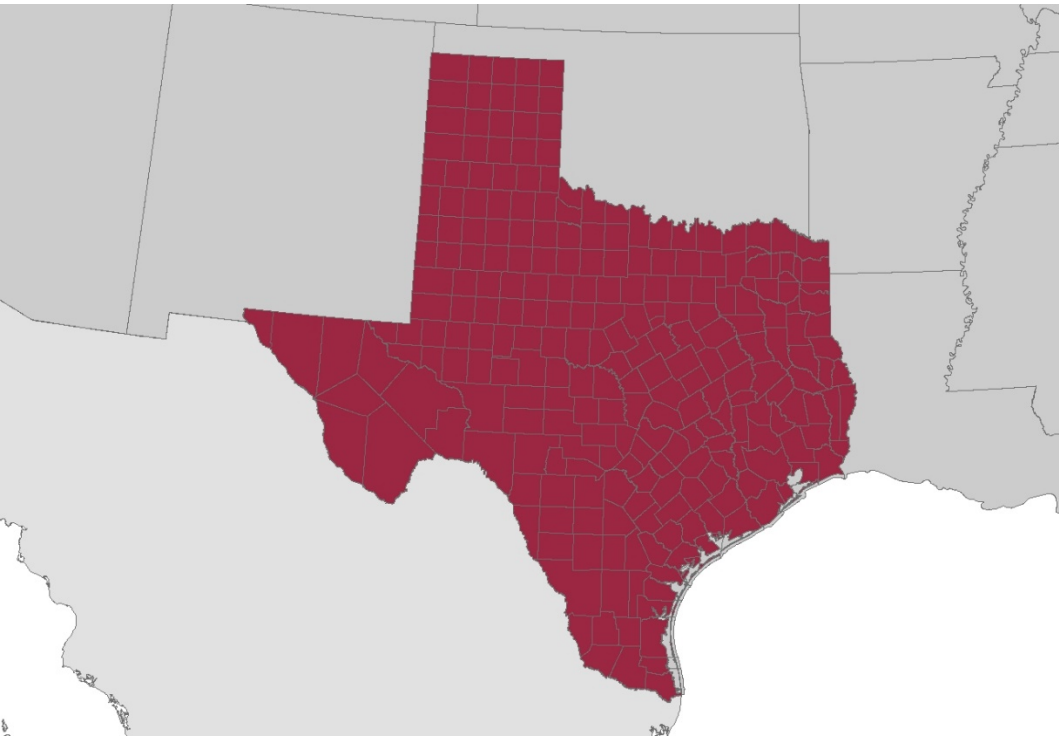
Block

State within the Country



State	County	Tract	Block Group	Block

State



48

State

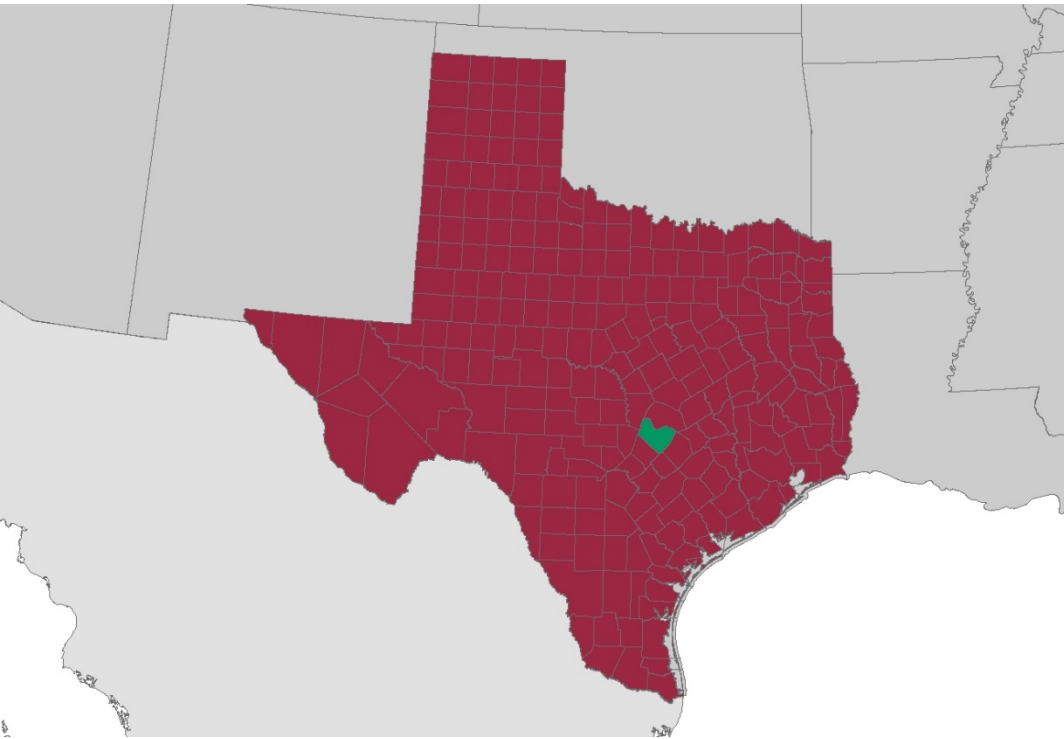
County

Tract

Block
Group

Block

County within the State



48

State

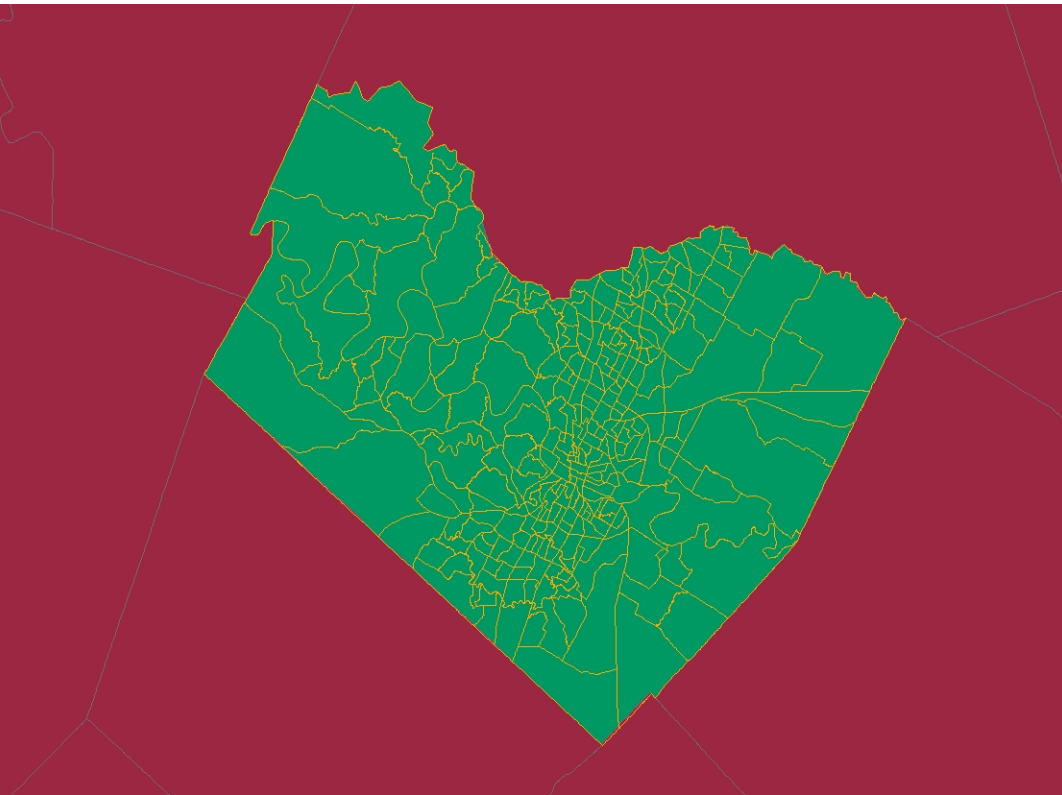
County

Tract

Block
Group

Block

County



48

453

State

County

Tract

Block
Group

Block

Tract within the County



48

453

State

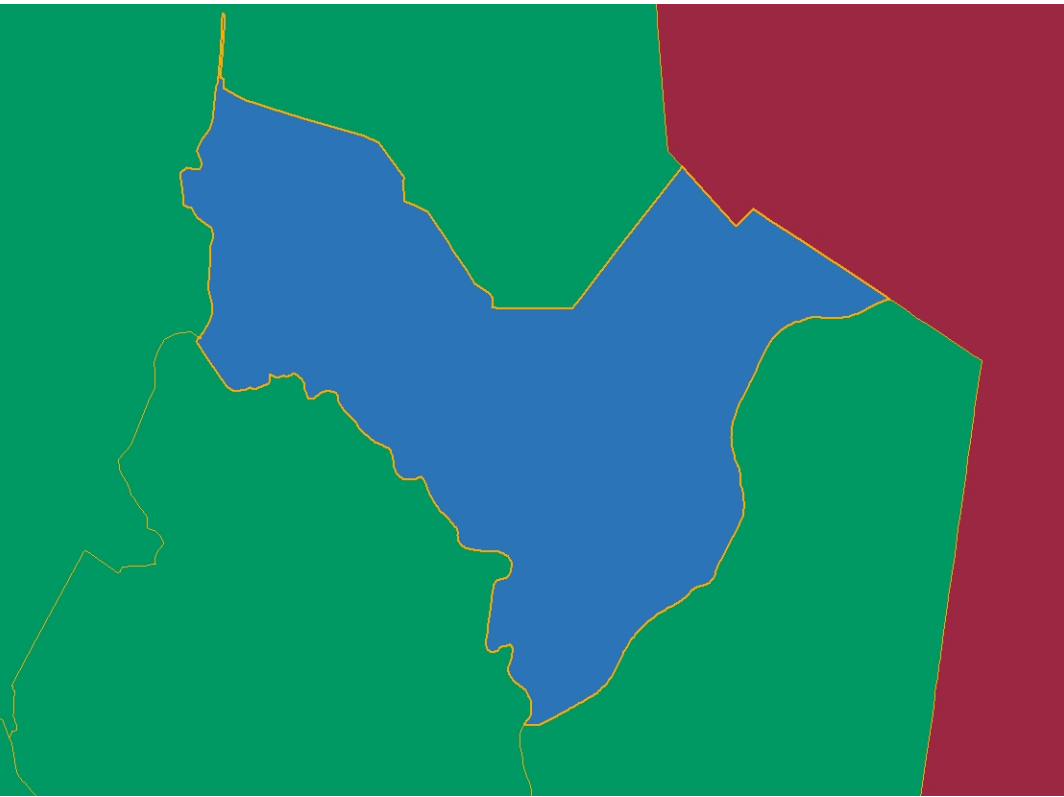
County

Tract

Block
Group

Block

Tract



48

State

453

County

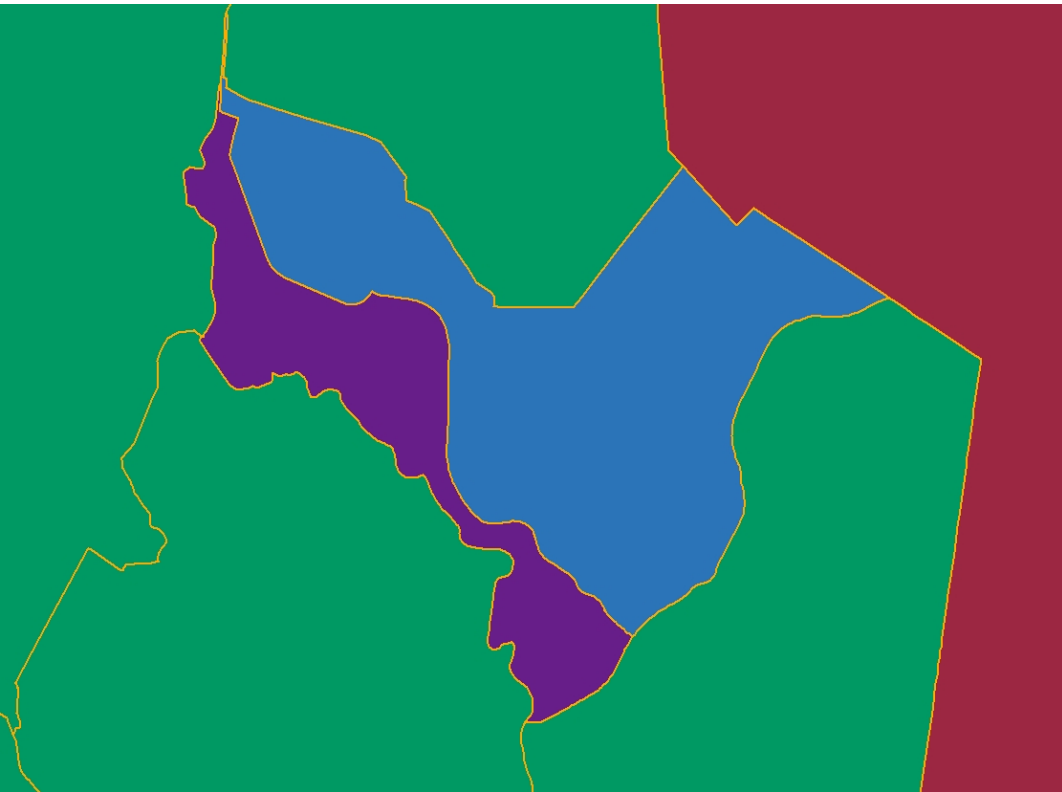
036000

Tract

Block
Group

Block

Block Group



48

State

453

County

036000

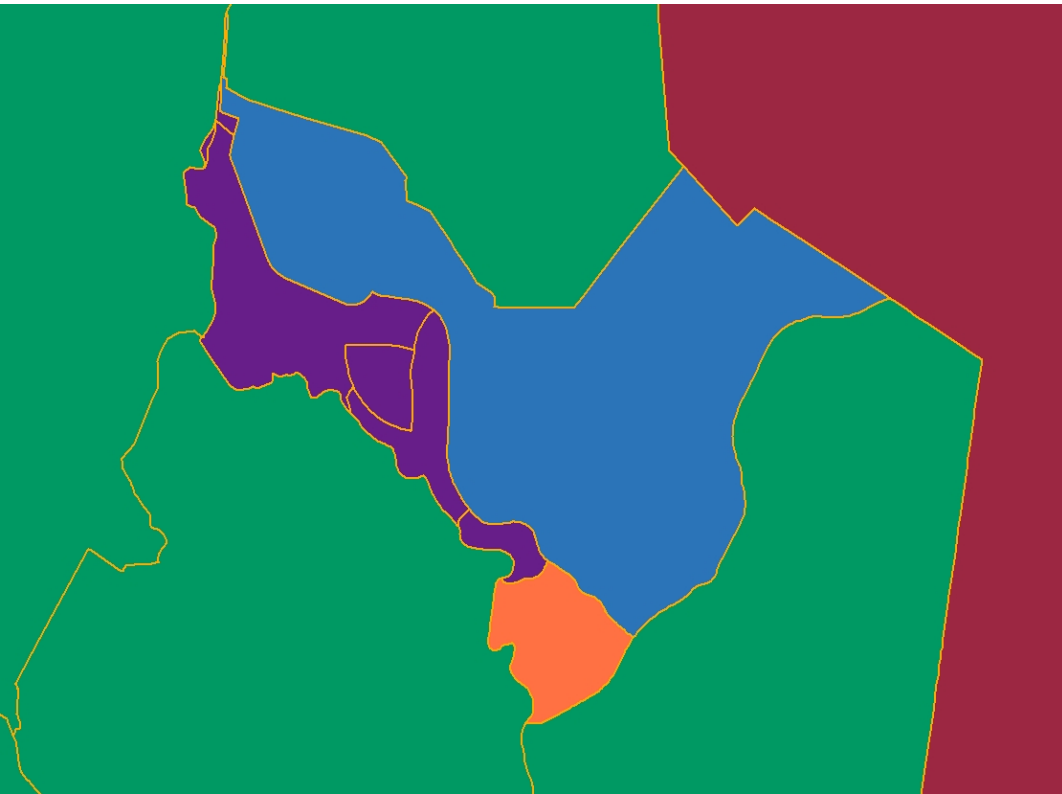
Tract

1

Block
Group

Block

Block within the Block Group



48

State

453

County

036000

Tract

1

Block
Group

Block

Block



48	453	036000	1	1006
State	County	Tract	Block Group	Block

Block



48

State

453

County

036000

Tract

1

Block
Group

1006

Block

Country



State

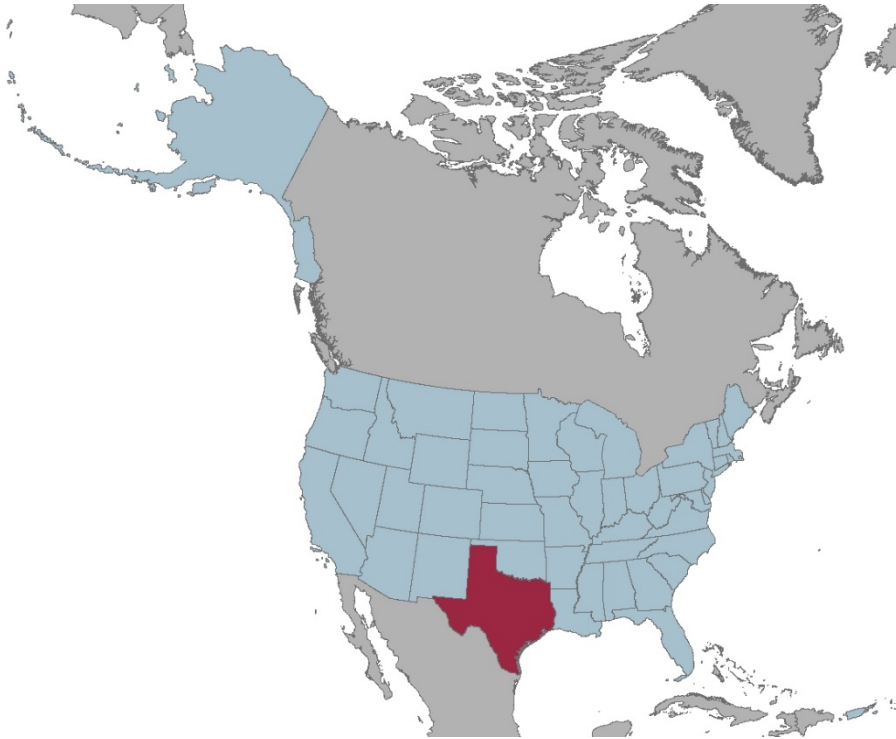
County

Tract

Block
Group

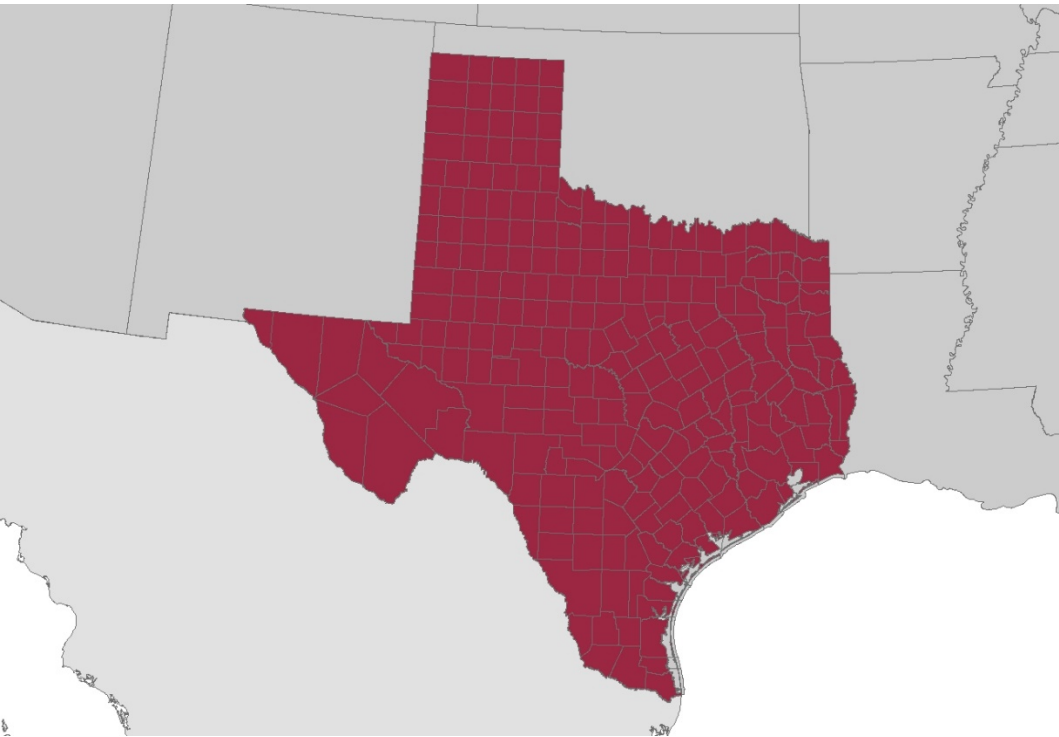
Block

State within the Country



State	County	Tract	Block Group	Block

State



48

State

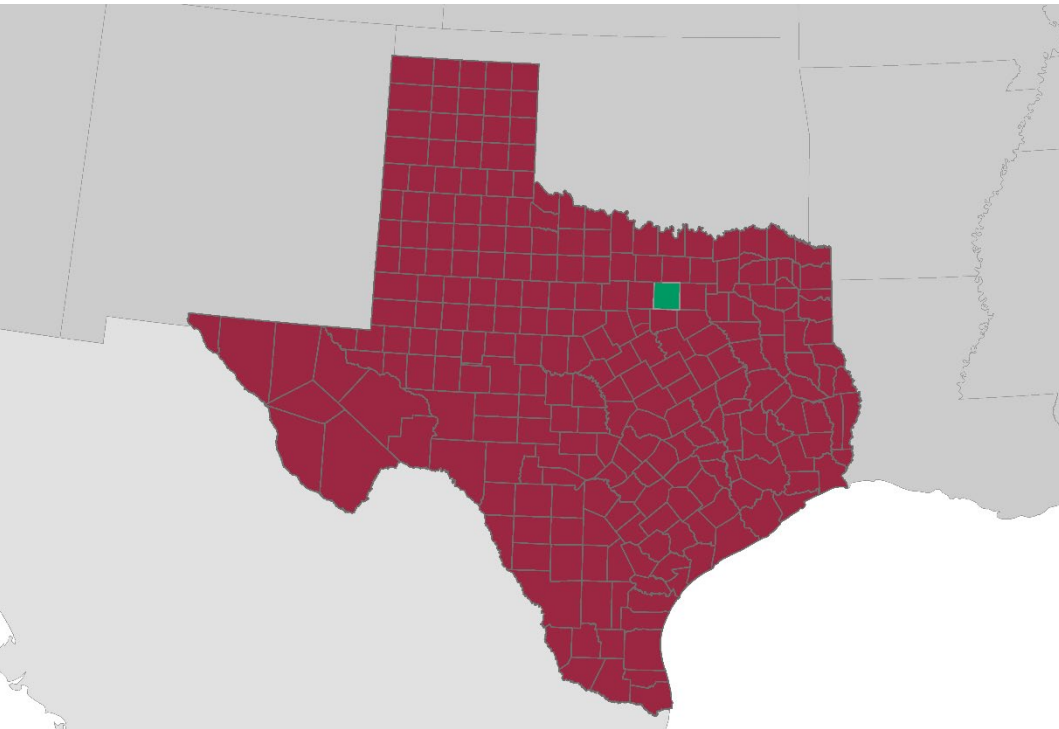
County

Tract

Block
Group

Block

County within the State



48

State

County

Tract

Block
Group

Block

County



48

439

State

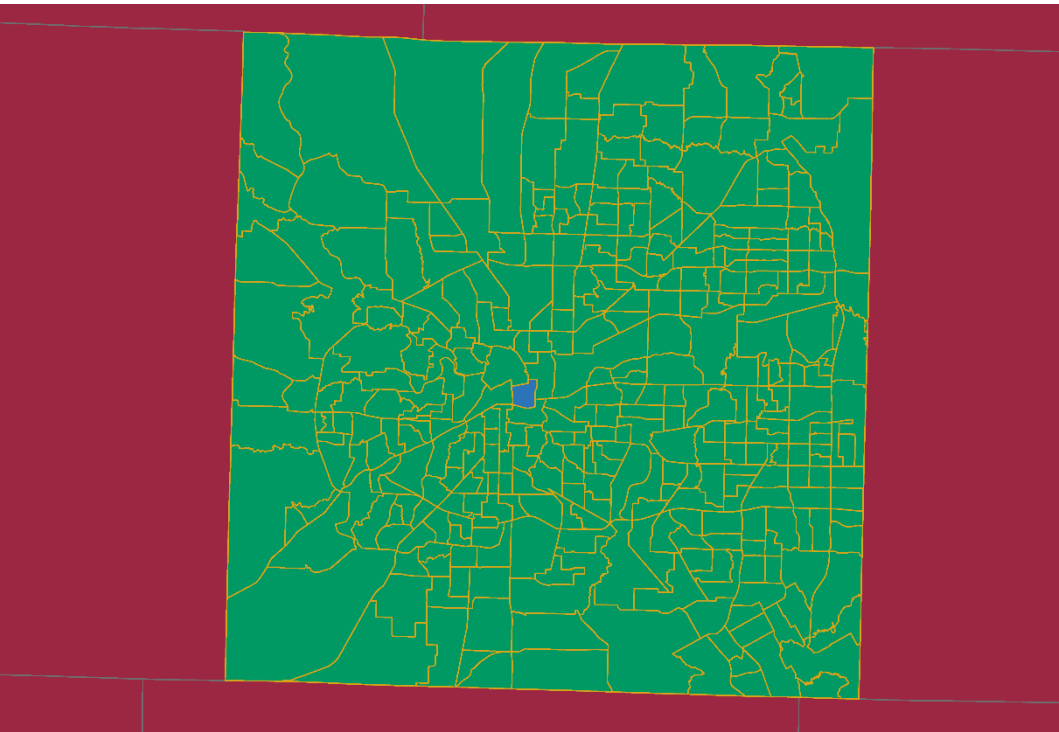
County

Tract

Block
Group

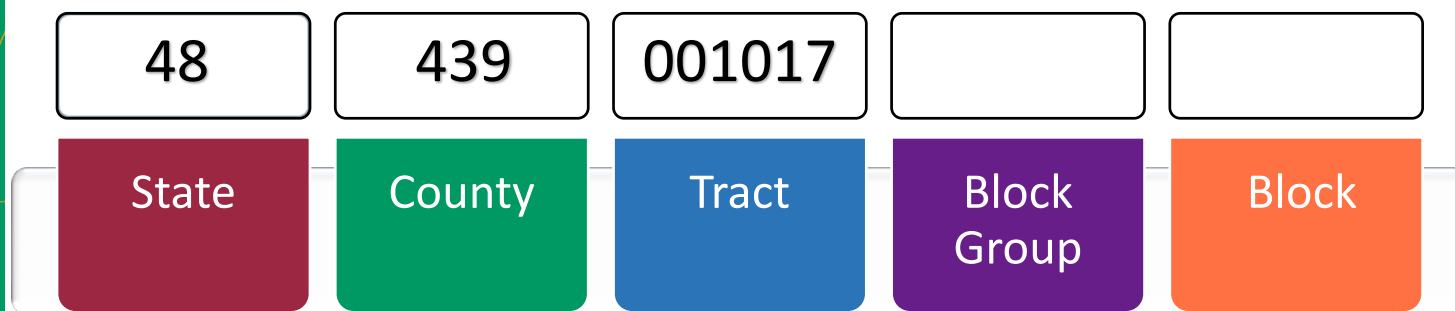
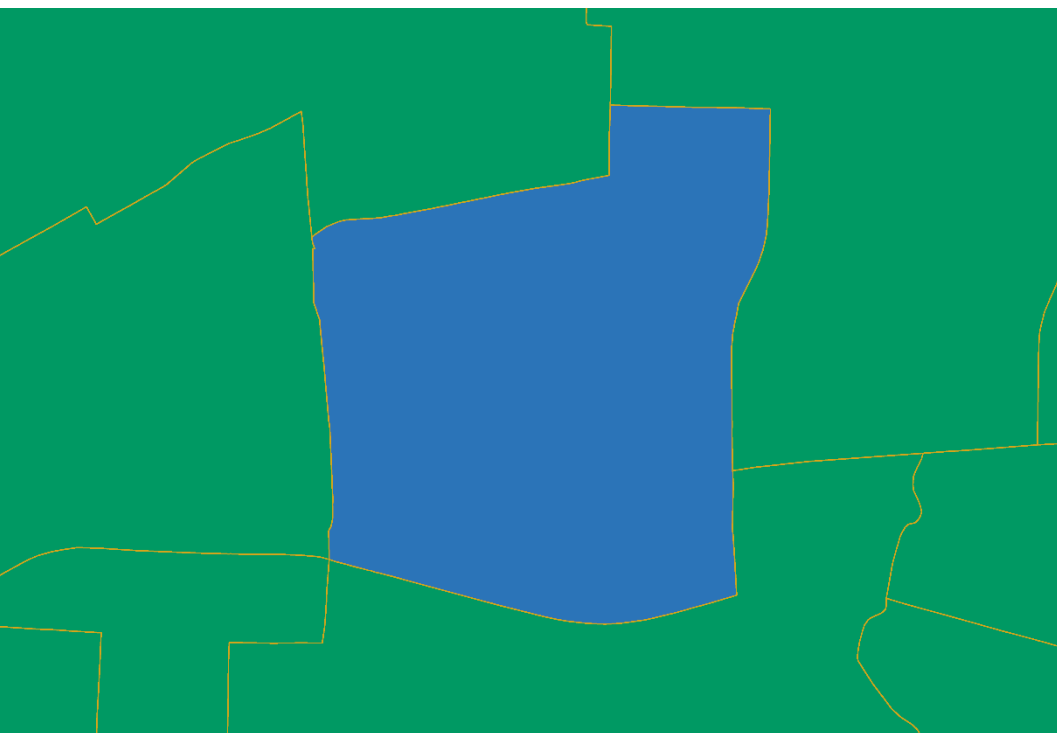
Block

Tract within the County

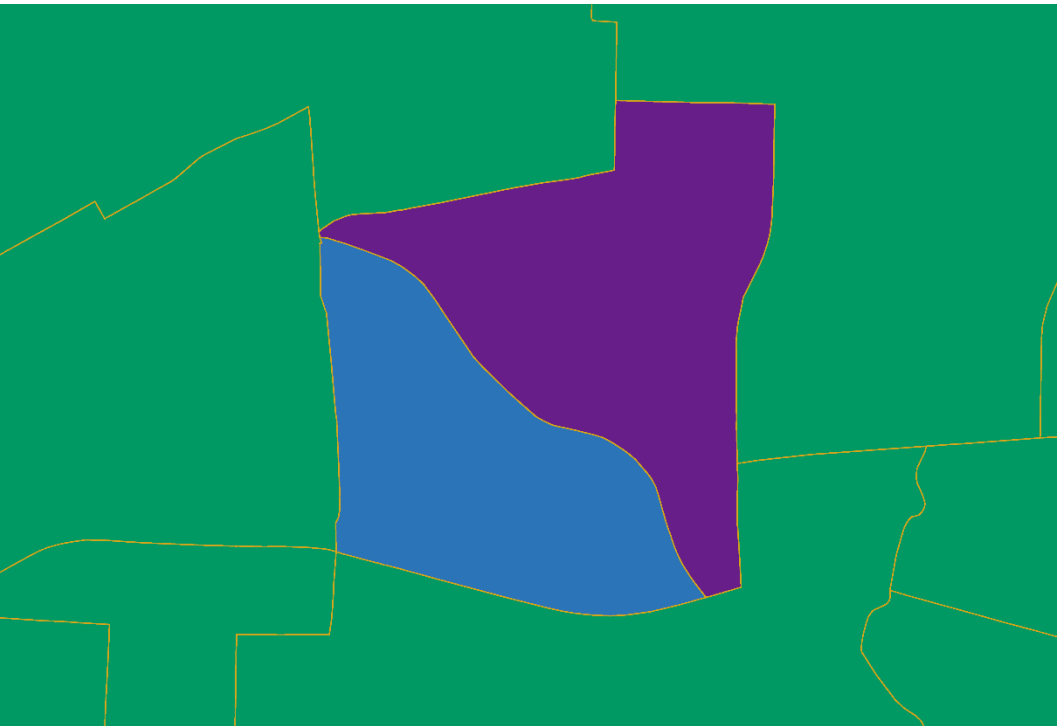


48	439			
State	County	Tract	Block Group	Block

Tract



Block Group



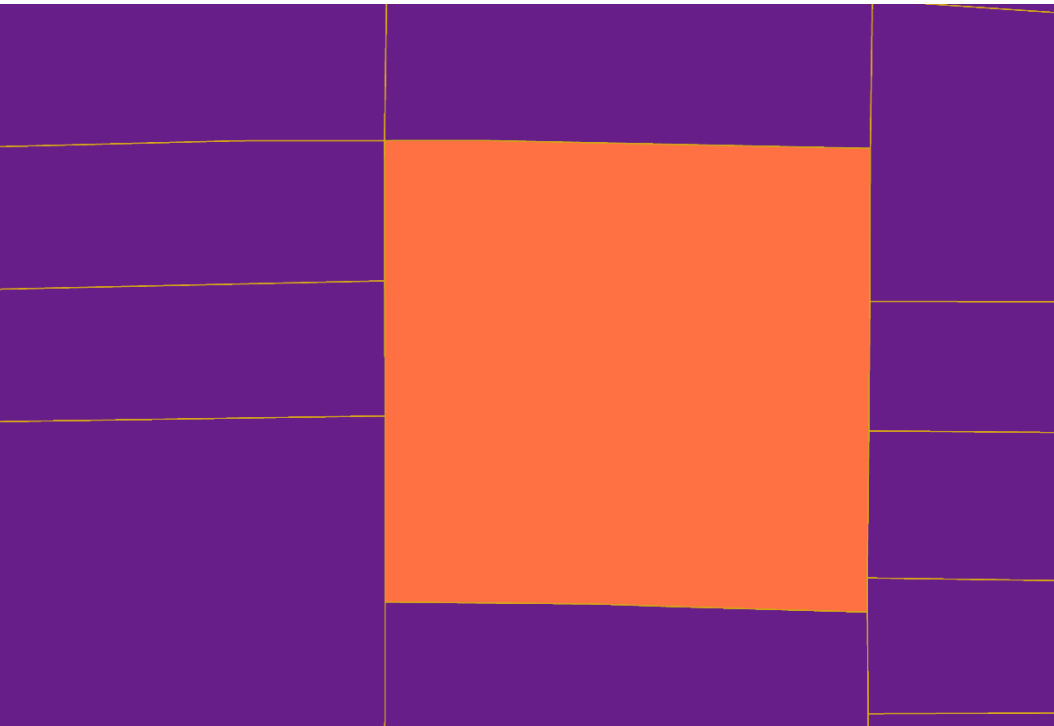
48	439	001017	2	
State	County	Tract	Block Group	Block

Block within a Block Group



48	439	001017	2	
State	County	Tract	Block Group	Block

Block



48

State

439

County

001017

Tract

2

Block
Group

2036

Block

Block



48

State

439

County

001017

Tract

2

Block
Group

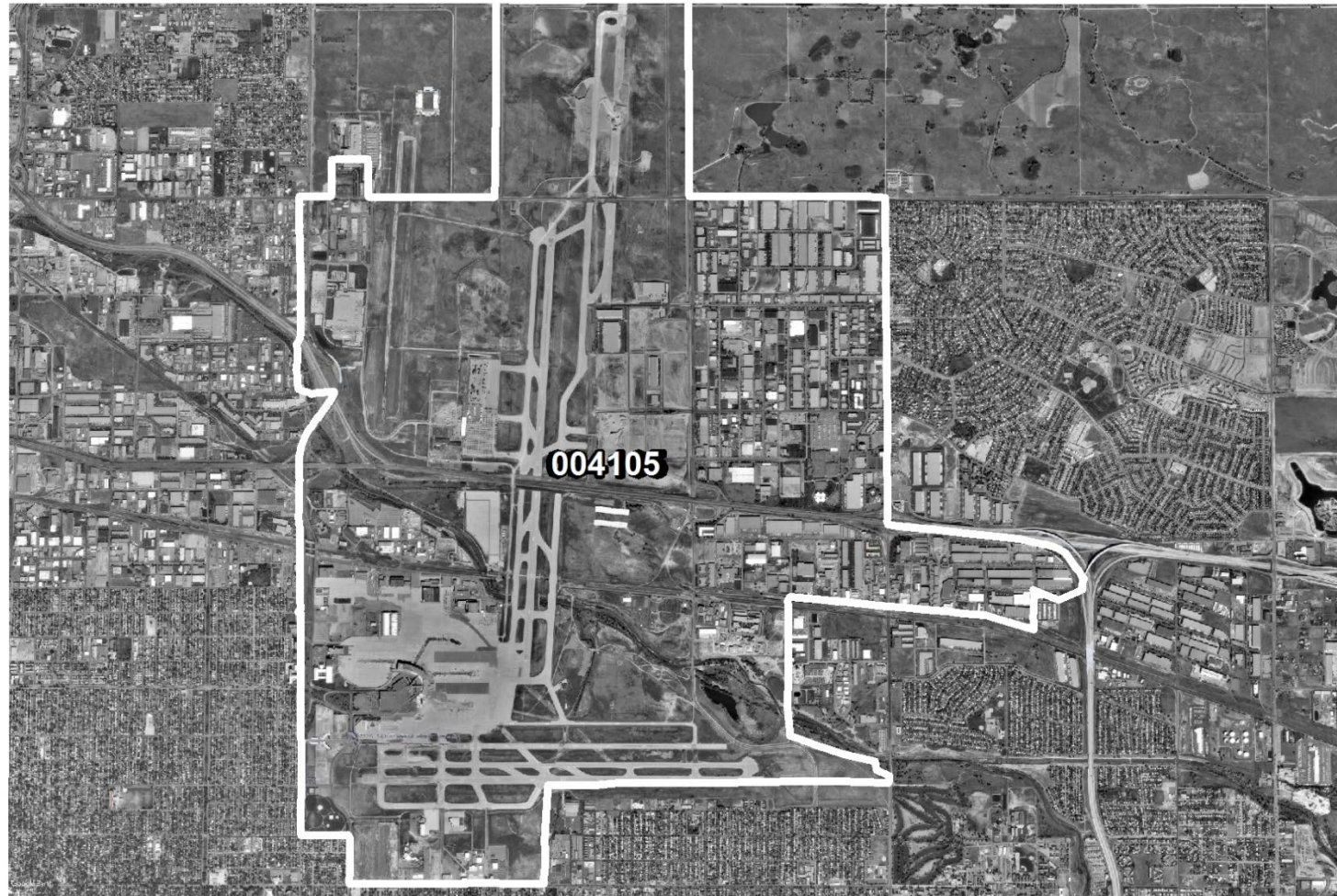
2036

Block

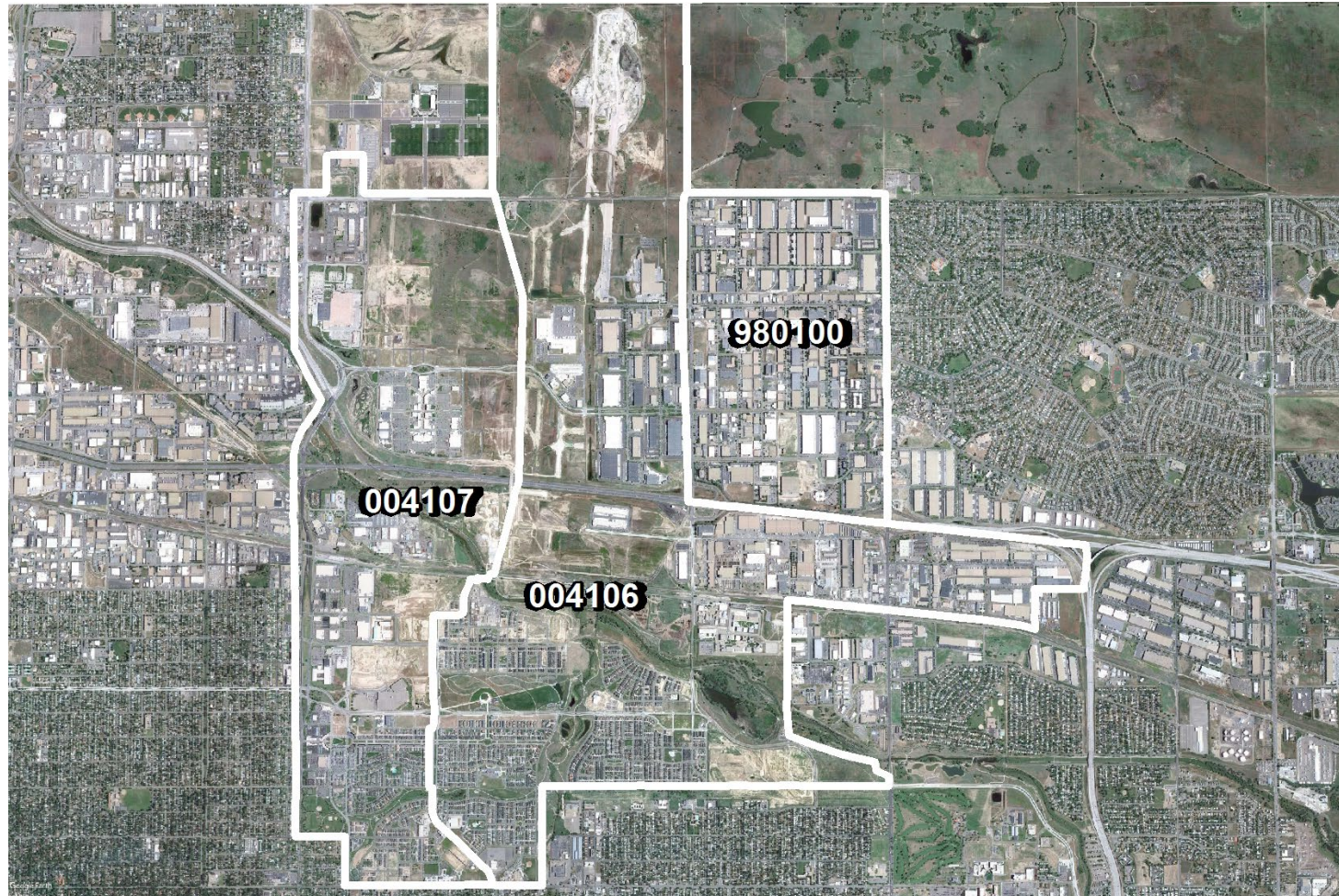
Tracts over Time

- First used in the 1910 census in some urban areas
- Full coverage in 1990
- Population Growth can require tract splits
- Maintain Comparability
 - Numbering

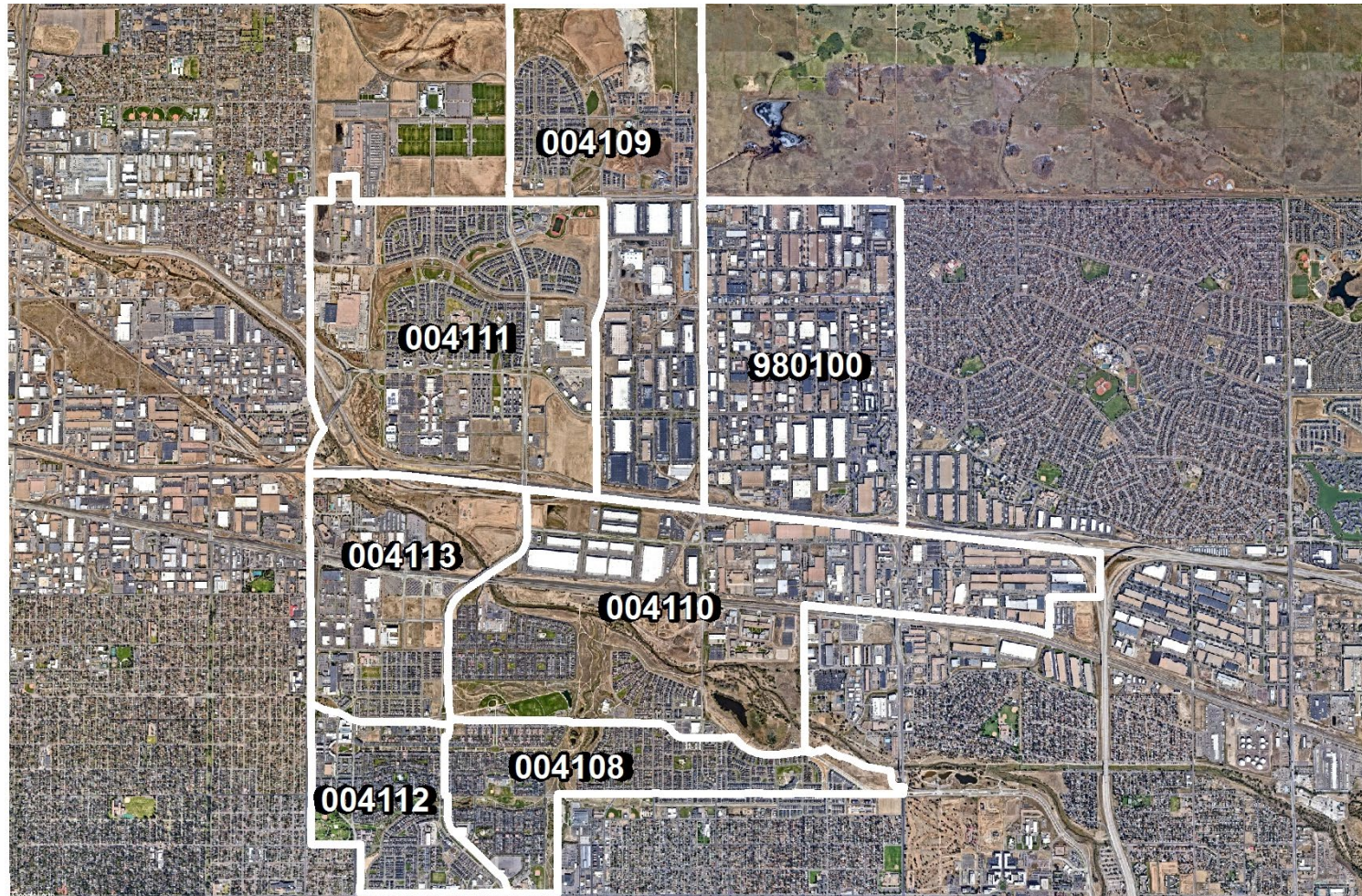
2000 Census



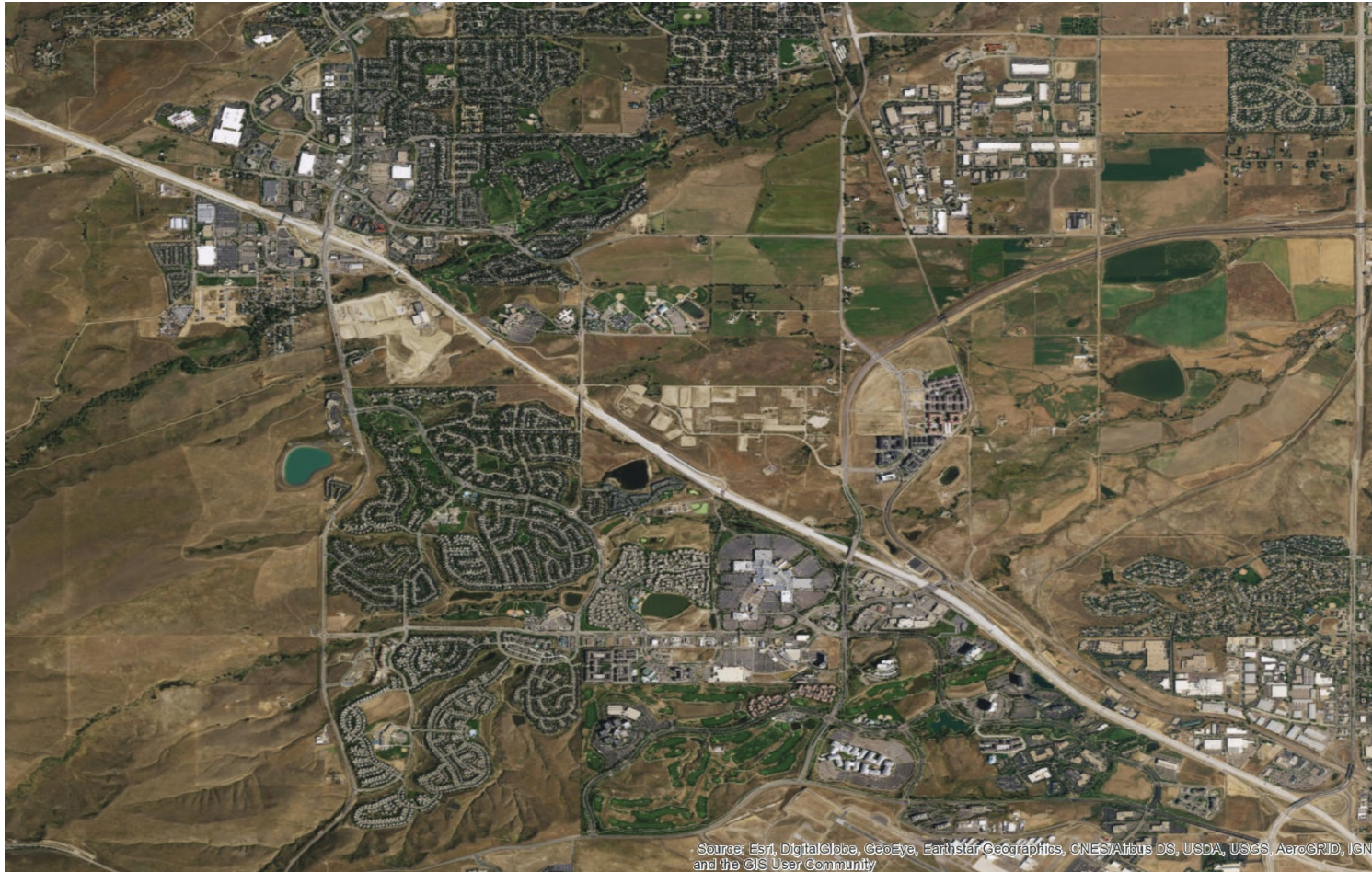
2010 Census



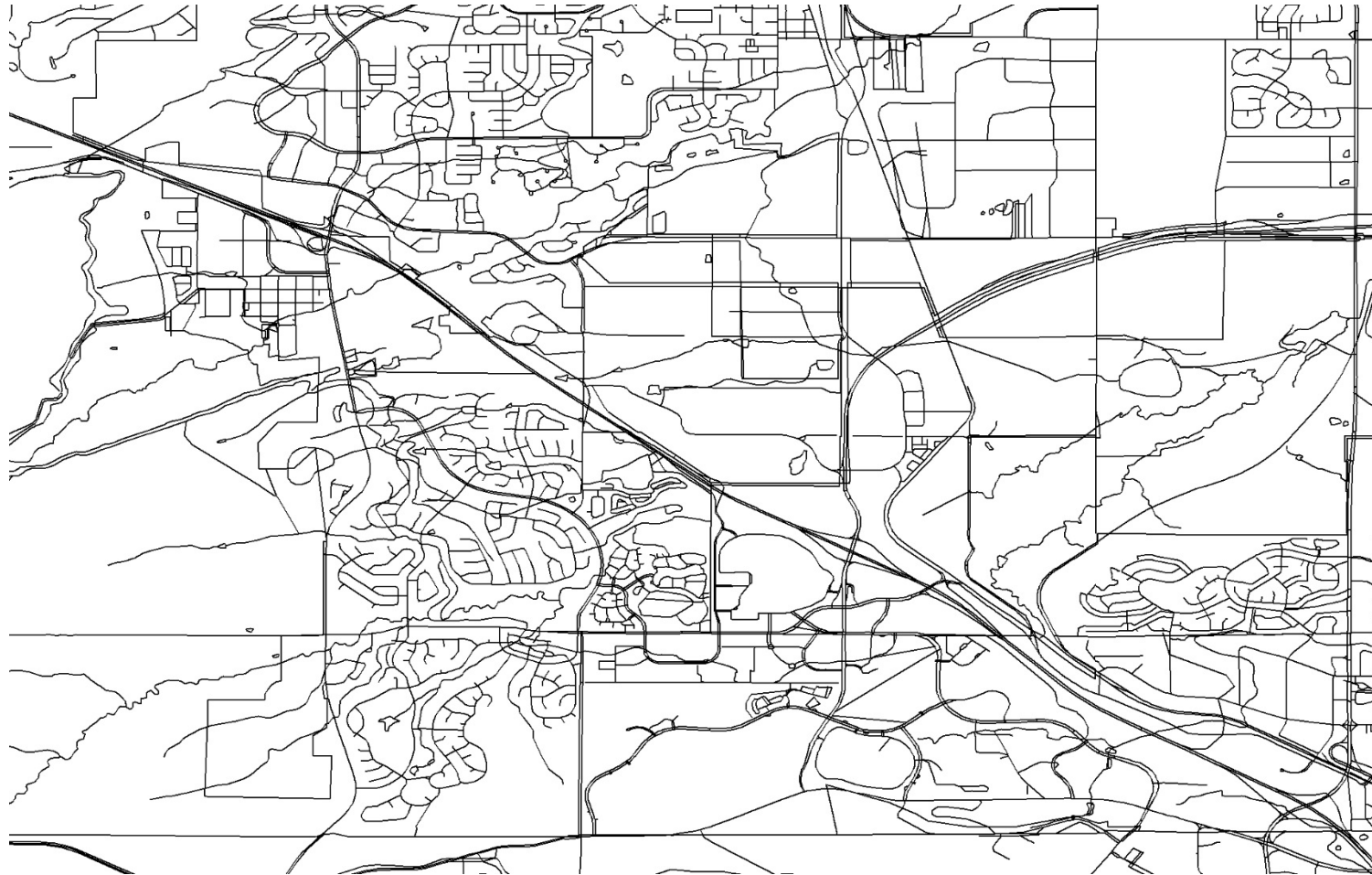
2020 Census



What is TIGER?



Digital Network of Lines



Live Demonstration

Thank you!

james.d.castagneri@census.gov

lacey.e.loftin@census.gov