



Texas Demographic Conference

**Shaping Tomorrow's  
Communities**

**May 21-22, 2025**

Conference Center at Pegasus Park  
Dallas, Texas

# Texas Future in Numbers: Population Projections Explained

*Helen You*

*Texas Demographic Center*



**Texas  
Demographic  
Center**

---

# TDC Projection Overview

---




## ➤ Overview


- **Total** population and population by **age, race, and sex** for Texas and all its counties;
- Single year of age;
- 5 race/ethnic groups: Hispanic, NH White, NH Black, NH Asian, and NH Other;
- From the most recent Census (2020) out to 40 years in the future (2060);
- Various migration scenarios are provided.

## ➤ Vintage 2024 Population Projections

- State projections by age, race/ethnicity, and sex.
- County projections will be available soon

# Access the TDC Projections

 Texas  
Demographic  
Center

 Lloyd Potter  
Texas State Demographer

Contact Us

Search



HomeEstimatesProjectionsData &amp; Geography▼Library▼About Us▼

## Texas Population Projections Program

The Texas Demographic Center generates biennial population projections for the state and its counties by age, sex, and race/ethnicity. The projections should be used only with full awareness of the inherent limitations of population projections and with detailed knowledge of the procedures and assumptions delineated in the methodology document.

Release Year: 2024 ▼

### Vintage 2024 Projections

The Texas Demographic Center Vintage 2024 projections consist of the state's residential population by age, sex, and race/ethnicity for each year from 2020 through 2060. The projections are available under multiple migration scenarios.

### Important user notes

Major changes have been made to the Vintage 2024 methodology. Users may notice differences in the following areas:

1. The data includes April 1st, 2020 Decennial Census Counts and the projection for the July 1st, 2020 population. The two 2020 records are distinguished by the "year\_month" column.
2. The projected population from 2020 to 2024 is aligned with the [Census Bureau's Vintage 2024 July 1st Estimates](#).
3. The projections are available with three migration scenarios, mid, low, and high, corresponding to the three [national projection](#) series produced by the Census Bureau in 2023.

# Projected Population Growth in Texas under Various Migration Scenarios

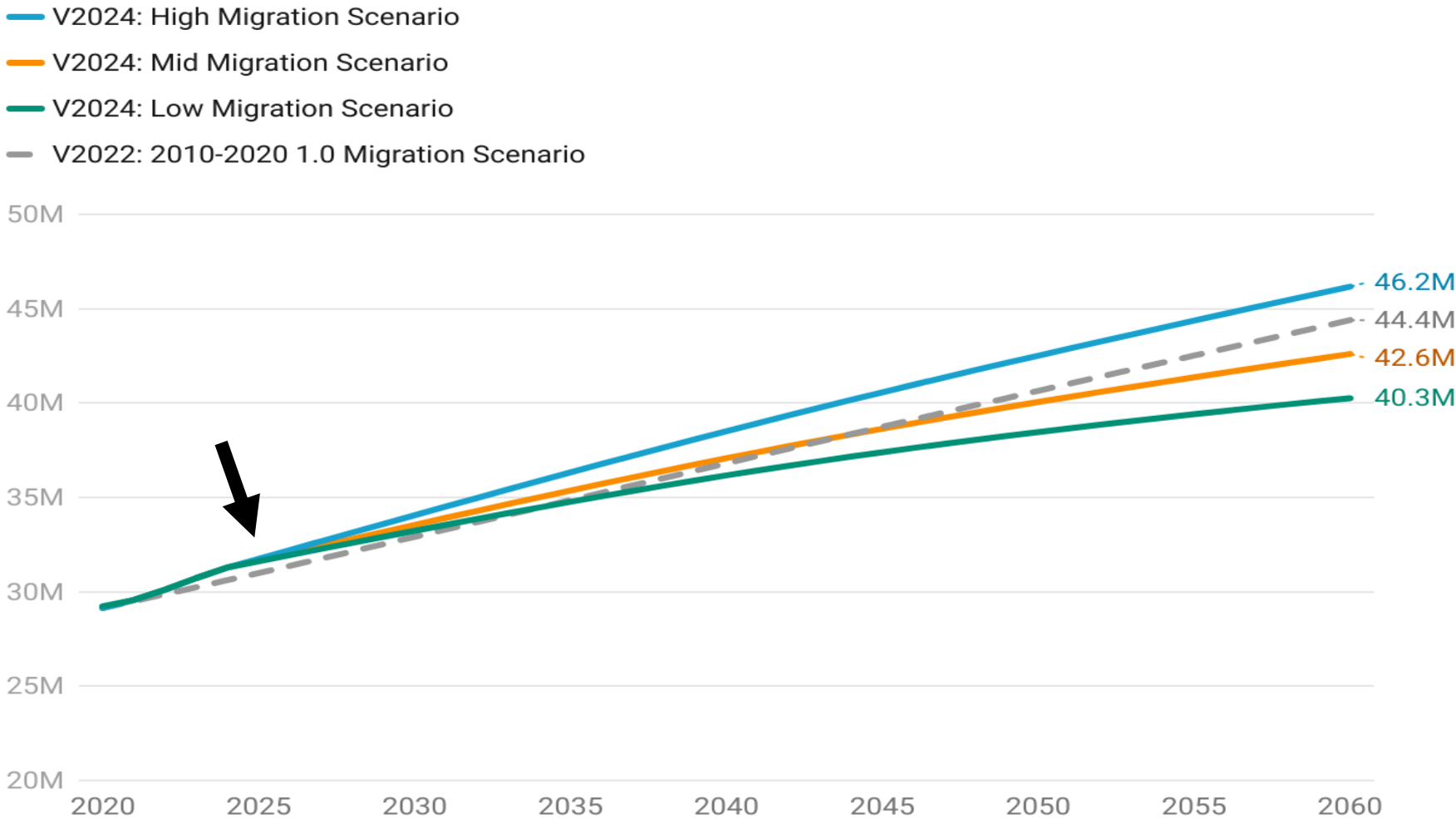
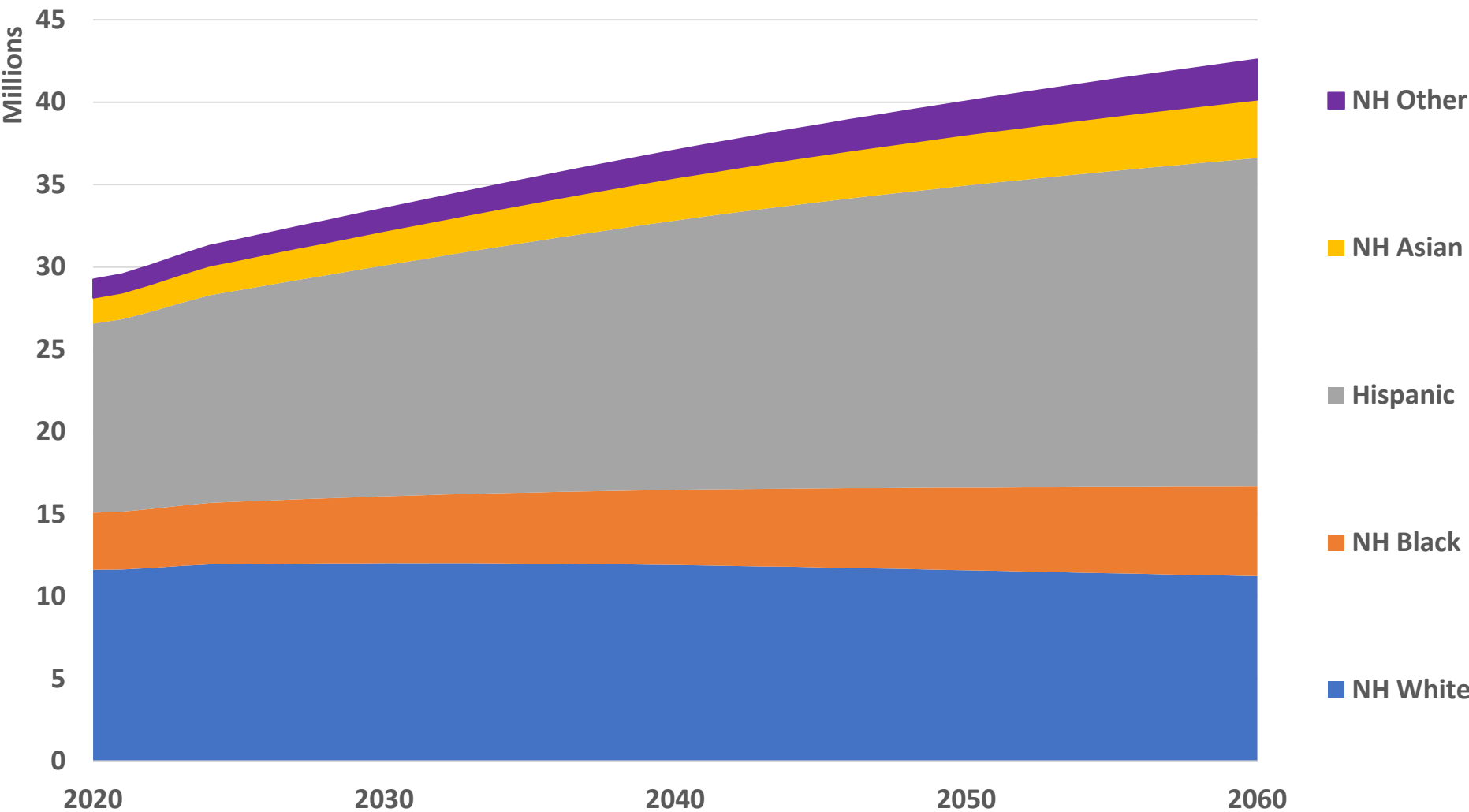
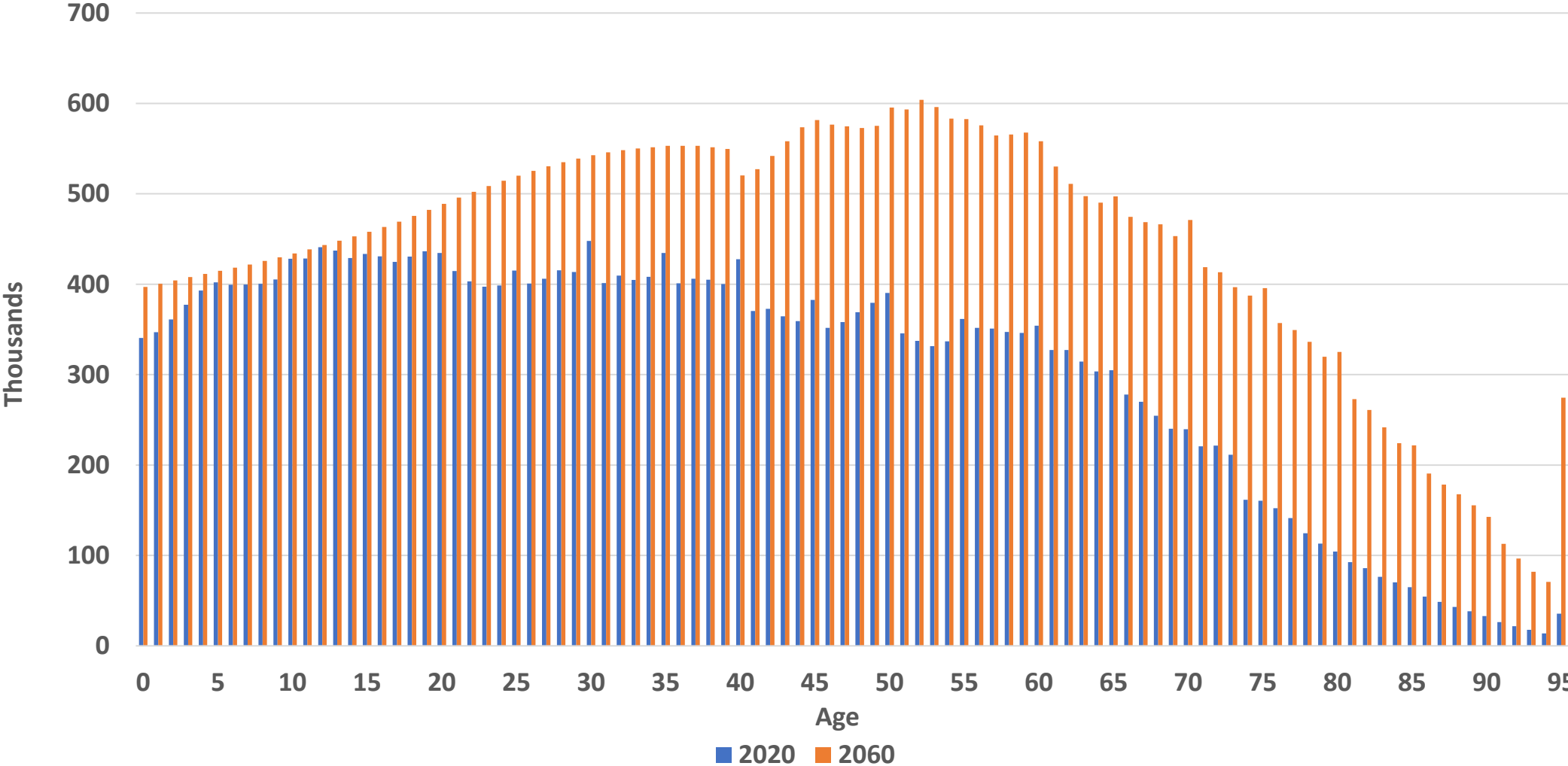


Chart: Texas Demographic Center • Source: Texas Demographic Center, Vintage 2022 and 2024 Population Projections • Created with Datawrapper

# Projected Population by Race/Ethnicity

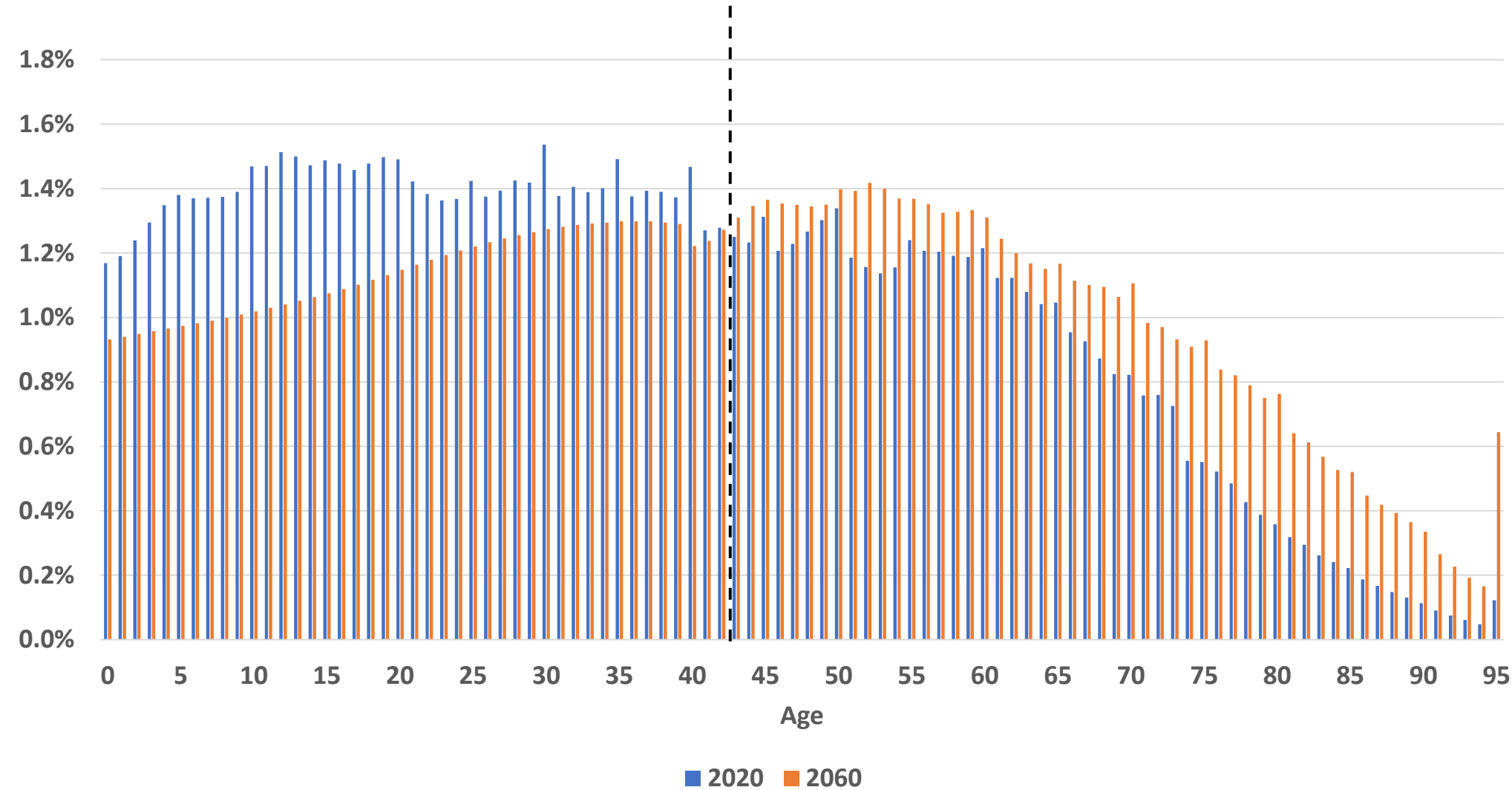


# Projected Population by Age, 2020 and 2060



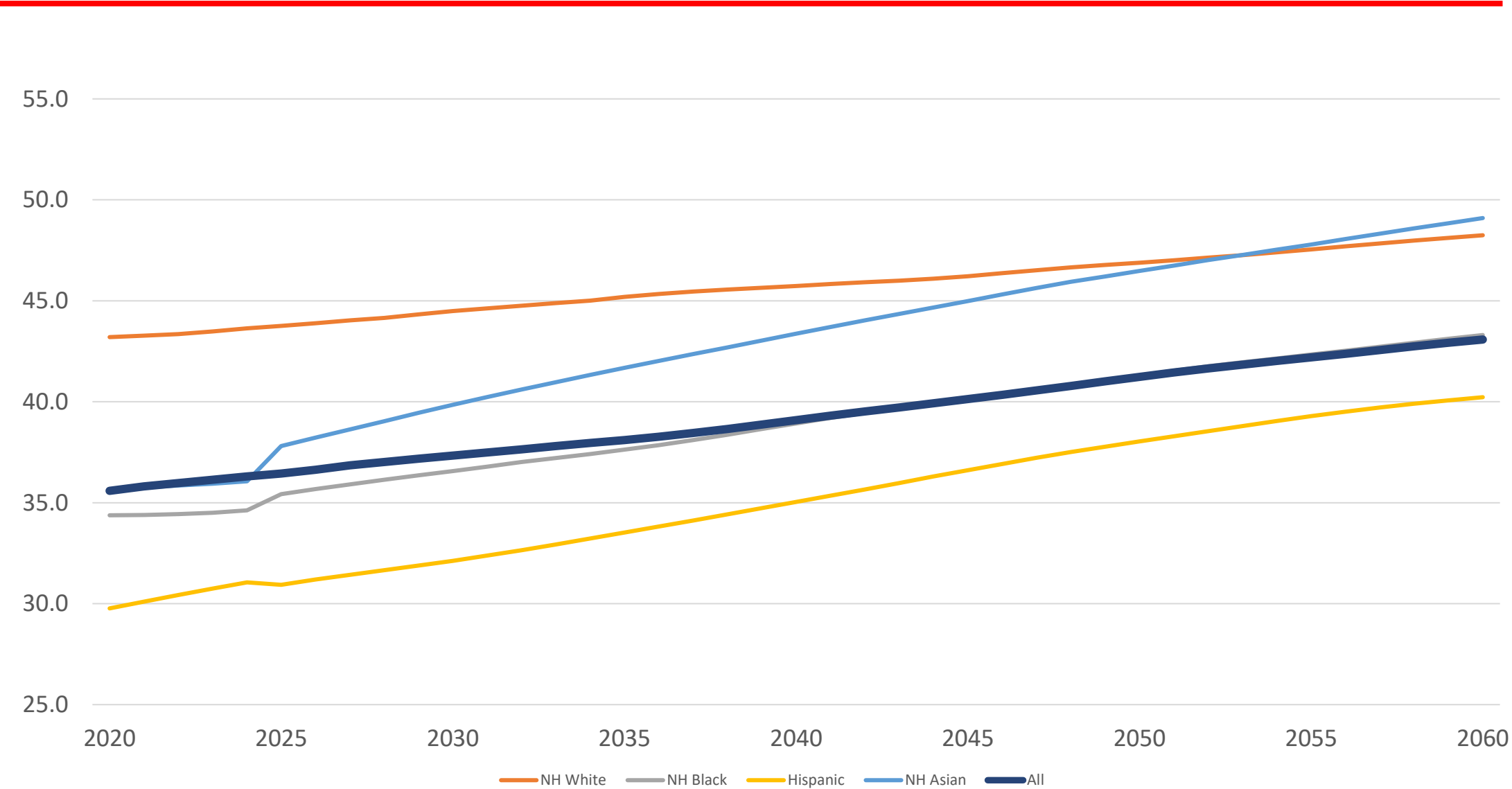
SOURCE: Texas Demographic Center, Vintage 2024 Population Projections

# Projected Population by Percent Age Composition, 2020 and 2060



SOURCE: Texas Demographic Center, Vintage 2024 Population Projections

# Projected Median Age by Race/Ethnicity, 2020 to 2060



SOURCE: Texas Demographic Center, Vintage 2024 Population Projections



# Methodology for TDC Population Projections



## ➤ *The Cohort Component Model*

- ❖ Components of Change: births, deaths, migration
- ❖ Cohort: Each cohort has its own pattern.
- ❖ In TDC projections, each race/ethnic group has its unique model

➤ **Future Population** = Current Population + Population Change



# Methodology for TDC Population Projections



## ➤ *The Cohort Component Model*

- ❖ Components of Change: births, deaths, migration
- ❖ Cohort: Each cohort has its own pattern.
- ❖ In TDC projections, each race/ethnic group has its unique model

➤ **Future Population** = Current Population + Population Change

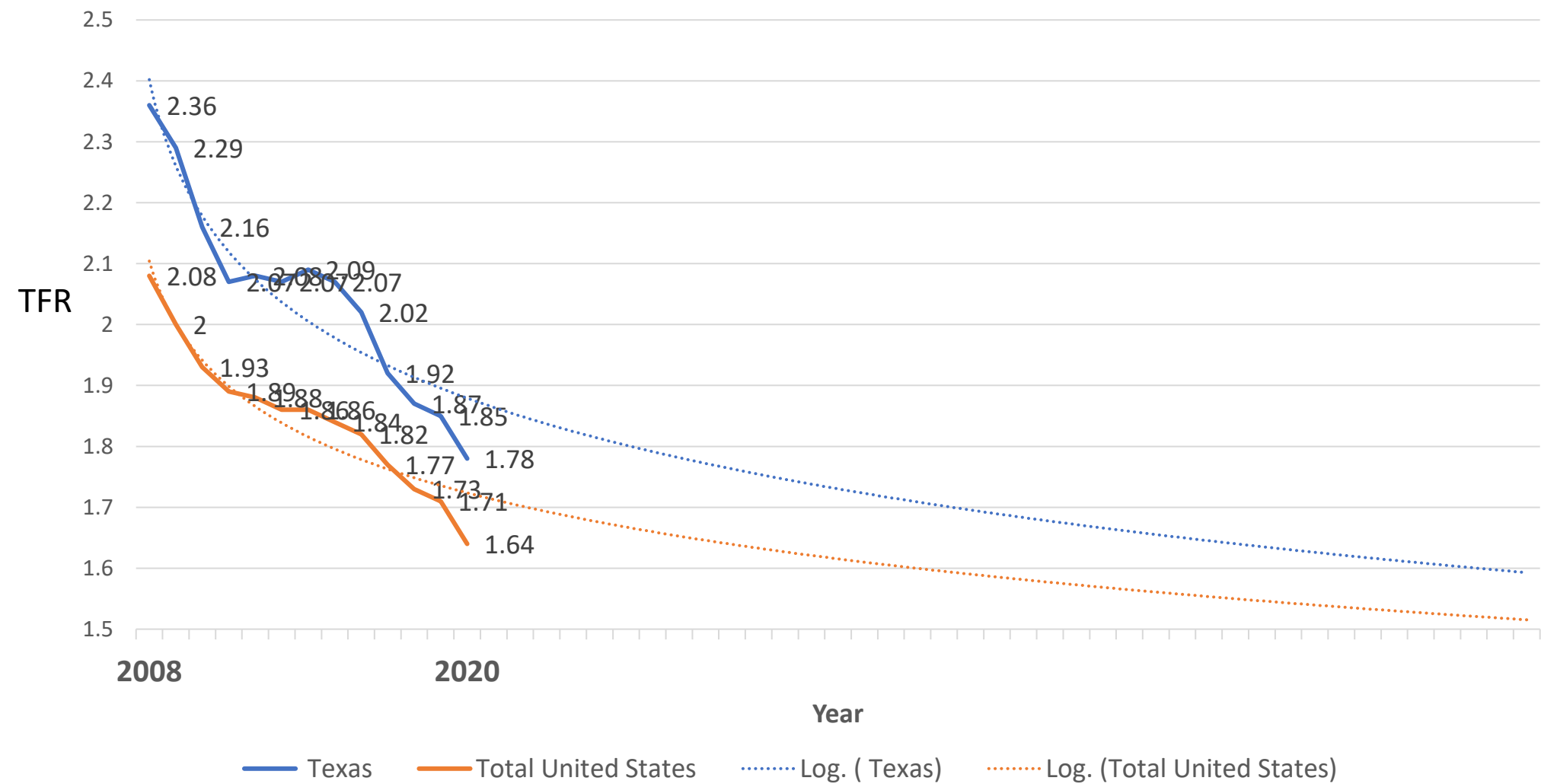




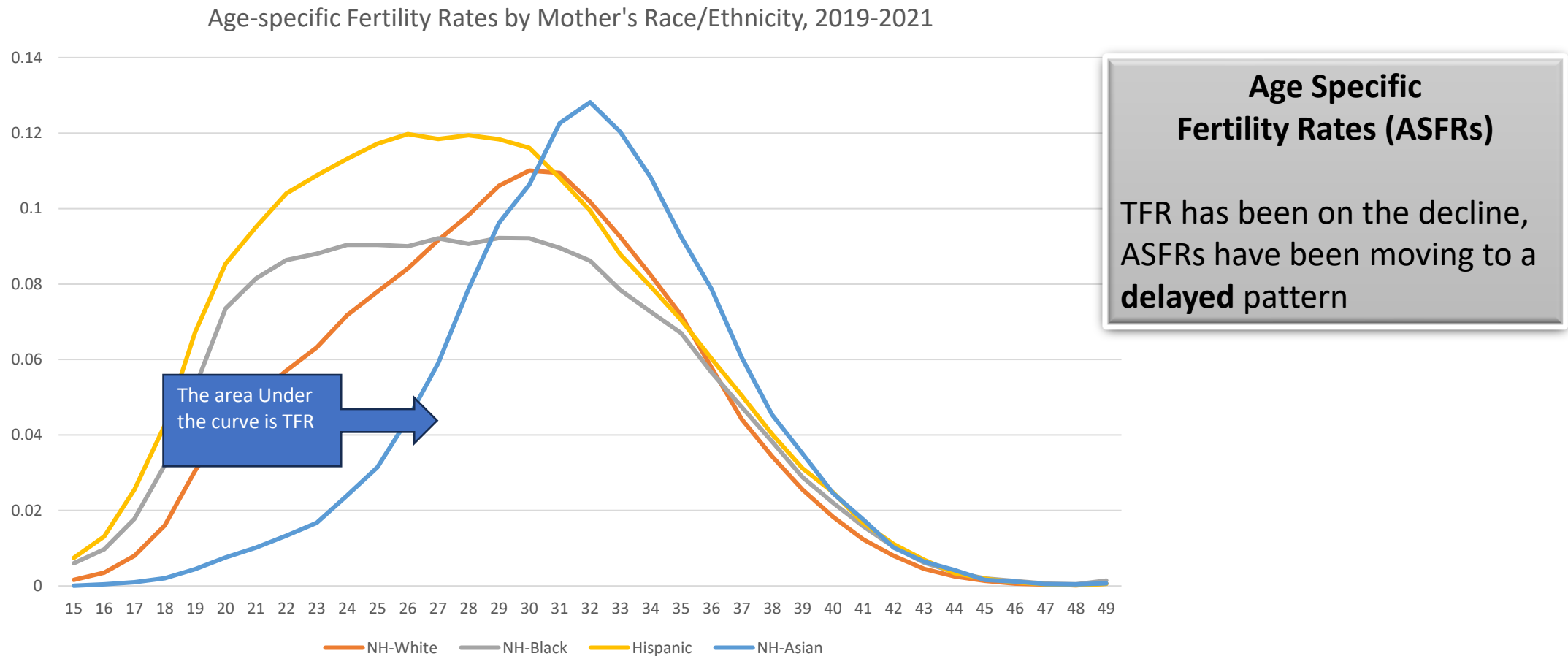
# Projected Births

Female Population 15-49 \* Birth Rate

# Total Fertility Rate Trend

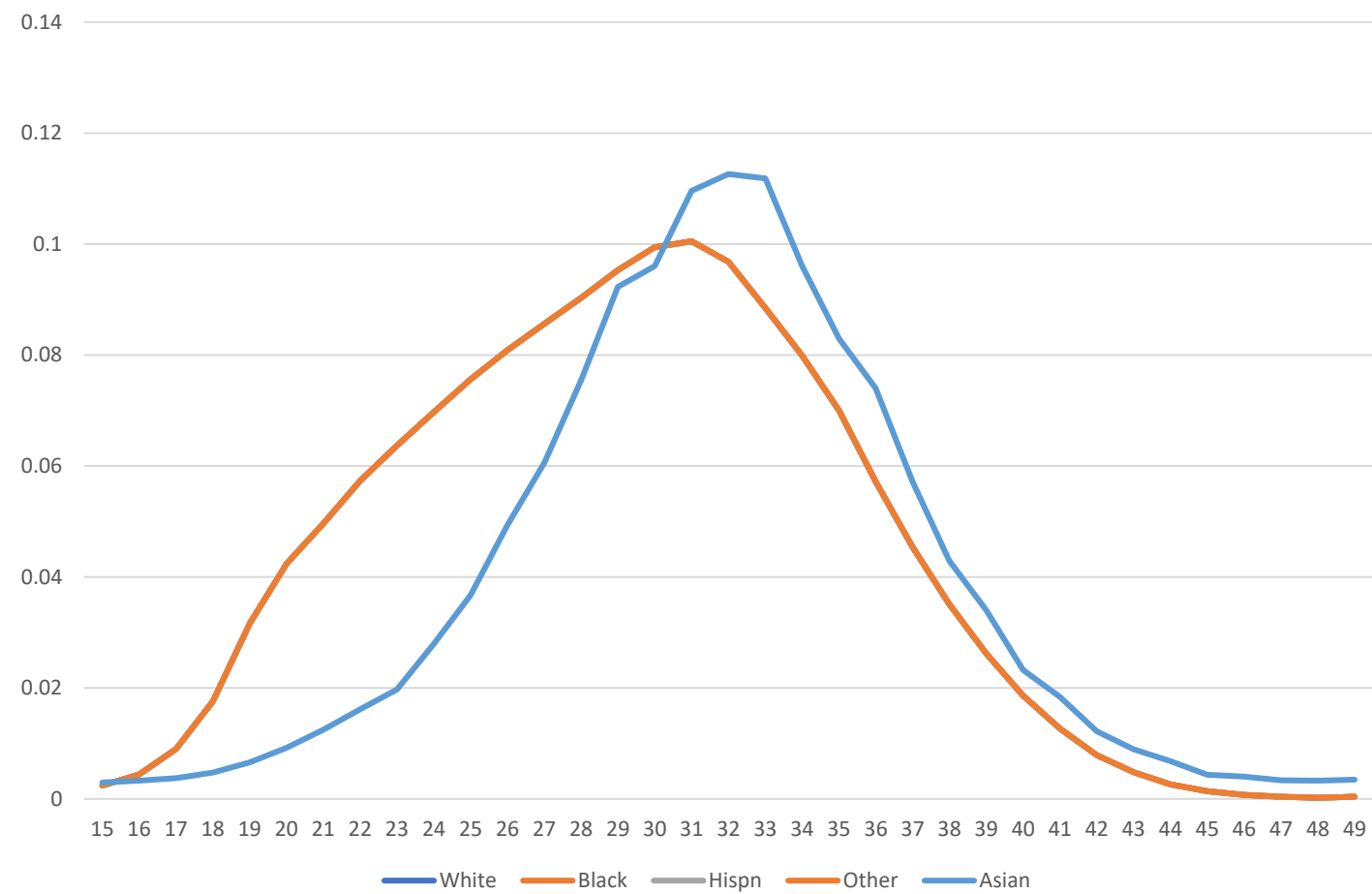


# Fertility Rates Differ by Age, and Race/Ethnicity



SOURCE: Texas Department of State Health Services (DSHS). Vital Statistics Birth Data; U.S Census Bureau. 2020 Decennial Census

# Projected ASFR in 2060 by Race/Ethnicity



TFR 2060

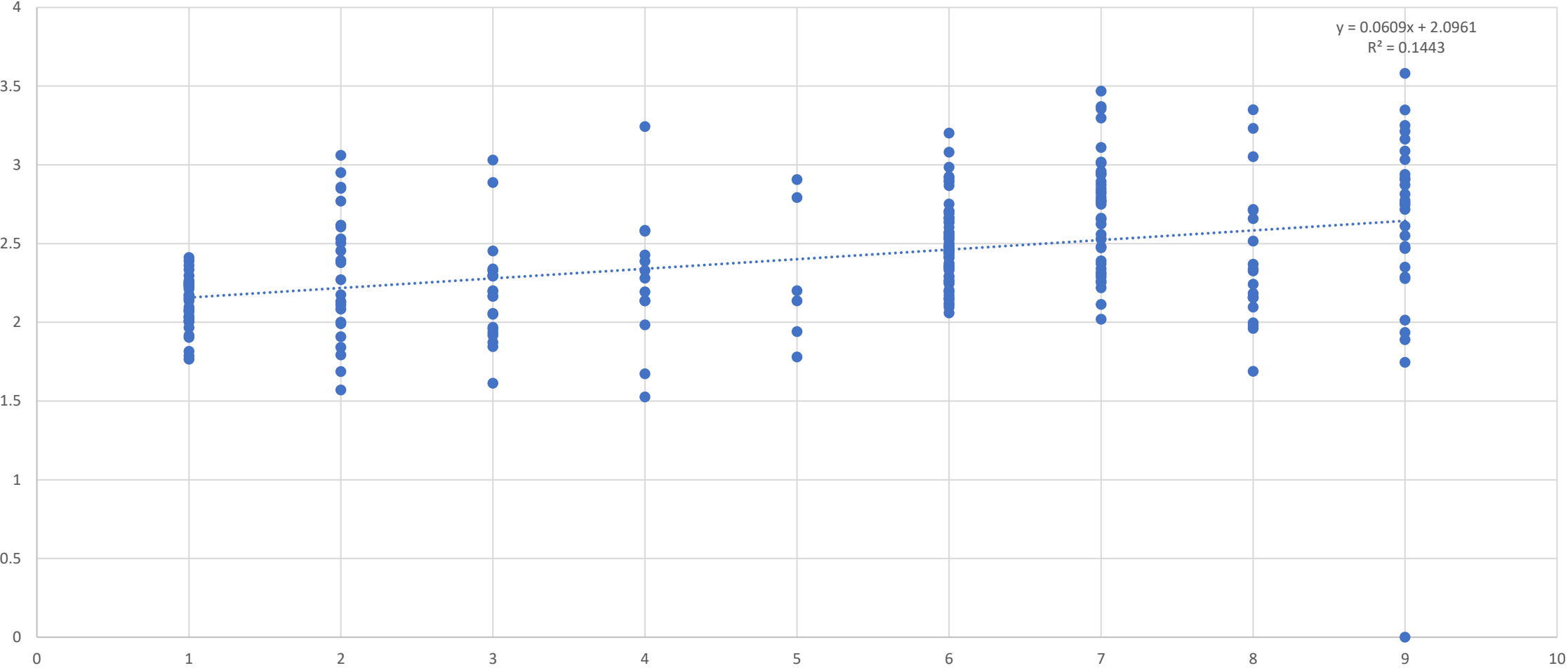
- Texas Asian will “converge” to the **current US NH Asian** ASFRs
- The rest of the groups will converge to the current **US NH White** ASFRs

SOURCE: Texas Demographic Center, Vintage 2024 Population Projections

# County Fertility Projection



Total Fertility by Rural\_Urban Code





# Projected Deaths

Population \* Death Rates



# Historical and Projected Life Expectancy for the U.S.



## Life Expectancy at Birth 2020

US: 77

Male: 74.2

Female: 79.9

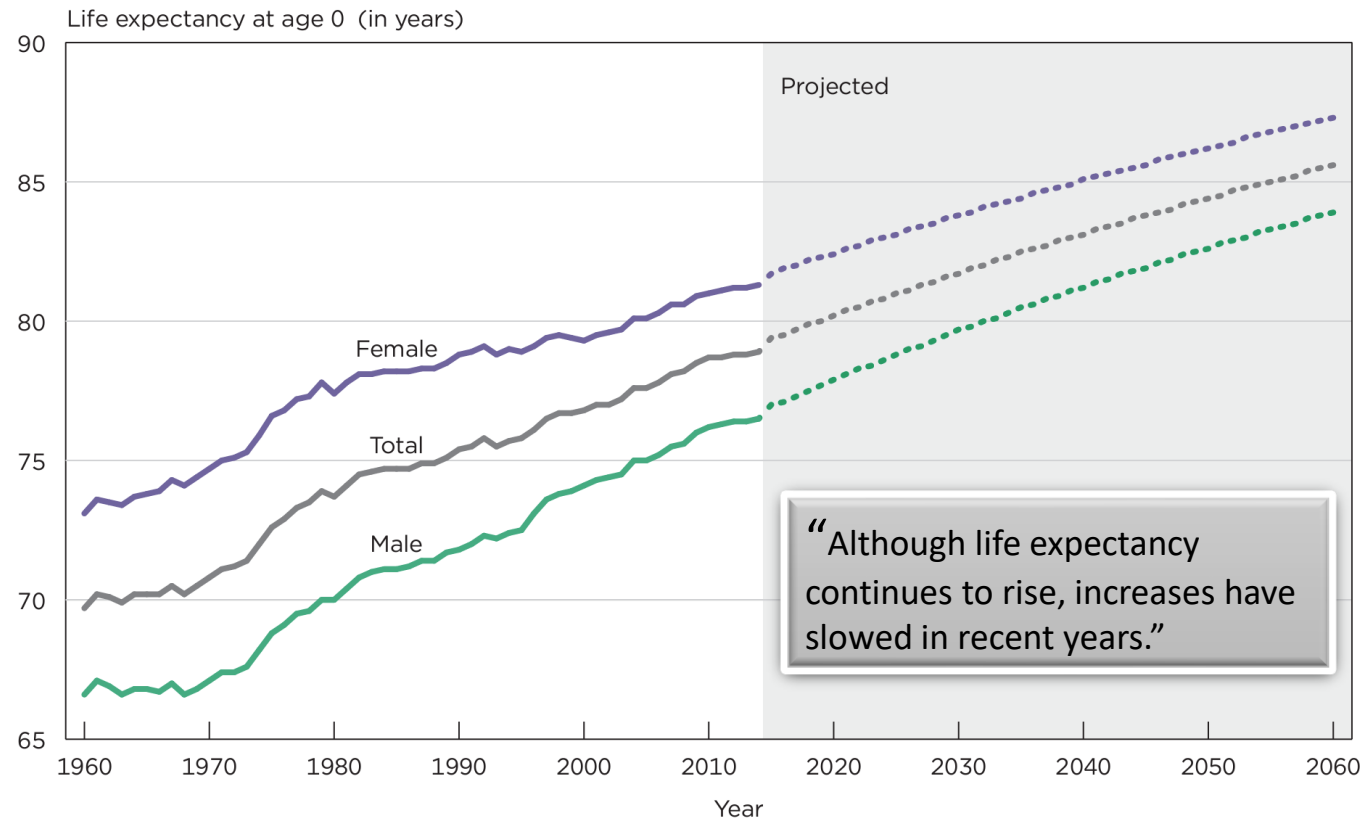
Texas: 76.5

Male: 73.7

Female: 79.3

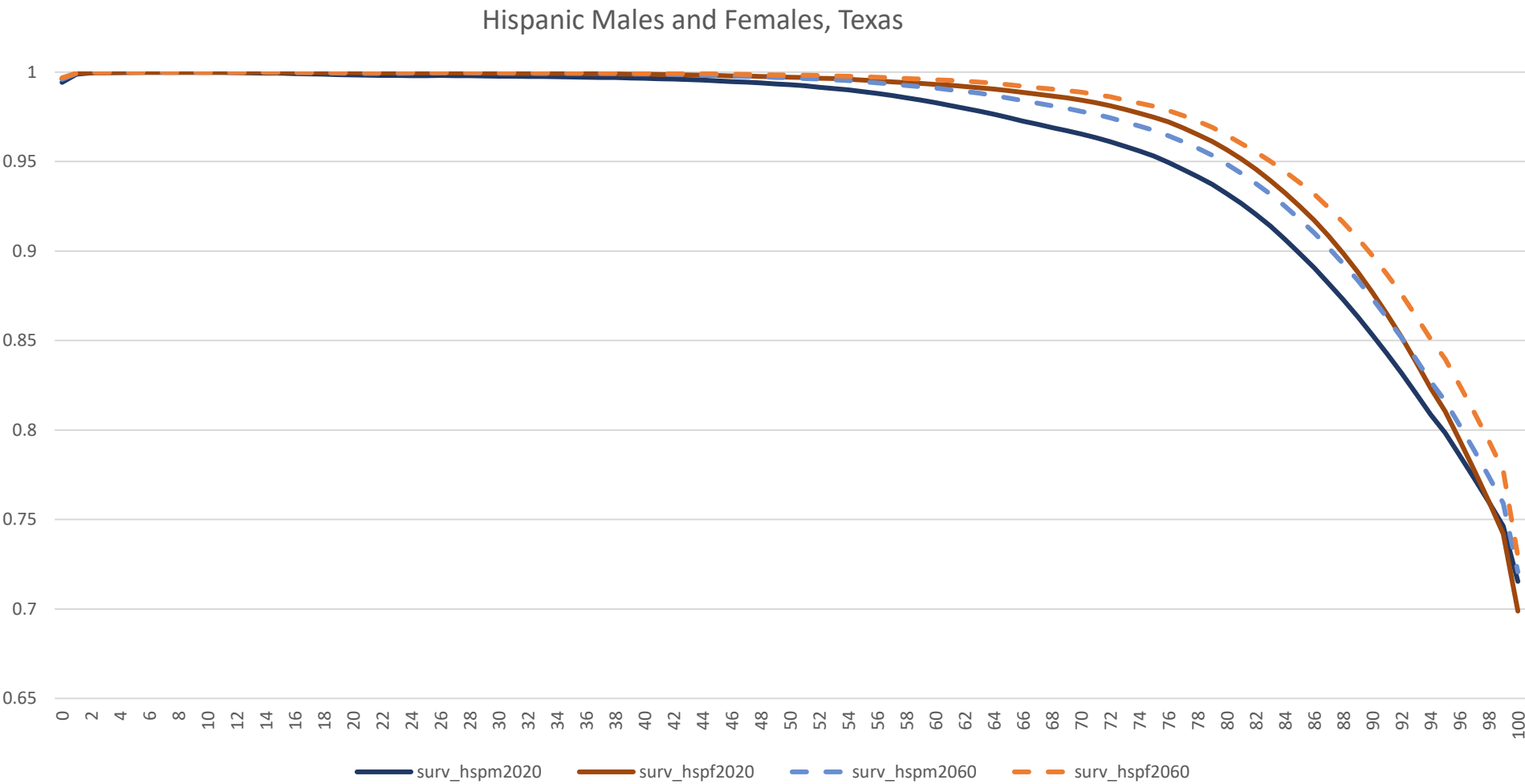
Figure 1.

### Historical and Projected Life Expectancy for the Total U.S. Population at Birth: 1960–2060



Sources: U.S. Census Bureau, 2017 National Population Projections, 2015–2060, and National Center for Health Statistics Life Tables, 1960–2014, <[www.cdc.gov/nchs/data/nvsr/nvsr68/nvsr68\\_07-508.pdf](http://www.cdc.gov/nchs/data/nvsr/nvsr68/nvsr68_07-508.pdf)>.

# Survival Rates by Age and Sex for the Hispanic Population, 2023 and 2060



SOURCE: Texas Demographic Center, Vintage 2024 Population Projections

# County Survival Projection

---



## State:

- ❖ Use US projected survival rates.
- ❖ Apply TX/US ratio (2021)

## County:

- ❖ The same as the state.



# Projected Net Migrants

# Net International Migration

---



- World population (region/country-specific) \* Net immigration rate to the US.

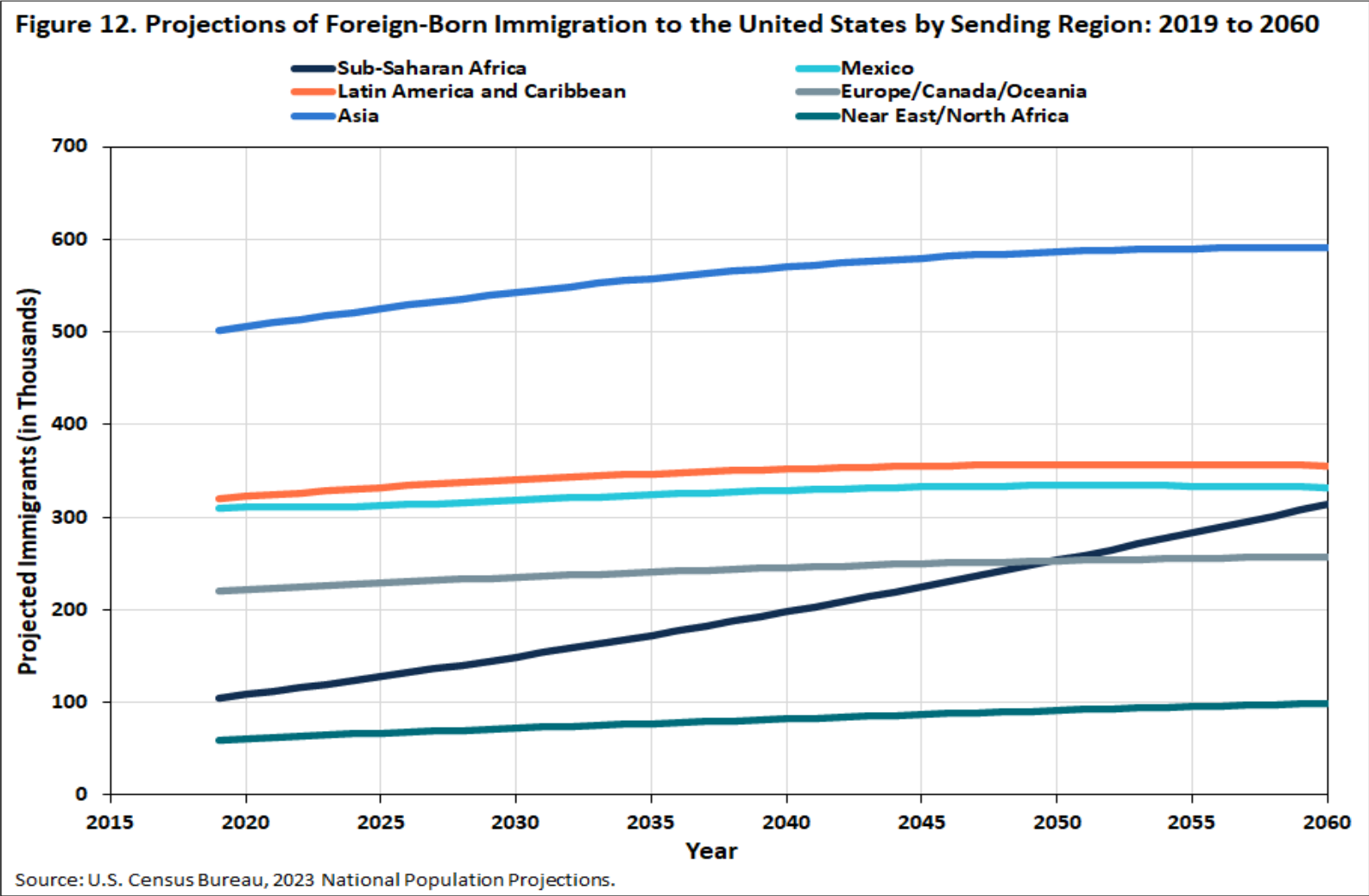
**Project Net International Migrants for Texas**  
**= (1)Projected National NIM \* (2)Texas share**

*(1) U.S. NIM from CB 2023 U.S. Population Projection*

*(2) ACS 2009-2019 PUMs file*

*Note: The calculations are done for each race/age/sex group*

# Projected National Immigration.



# Net Domestic Migration

---



➤ US population \* Net migration rate to Texas.

## **Projected Net Domestic Migrants for Texas**

**= (1)Projected U.S Population Projections \* (2)Texas rates**

*(1) CB 2023 U.S. Population Projection*

*(2) ACS 2009-2019 PUMs file*

*Note: The calculations are done for each race/age/sex group.*



## Allocating the state migrants using CB Vintage 2020 Population Estimates

- ❖ Yearly average of the components of change from 2011 to 2020.
- ❖ Calculate the county share of domestic and international migrants.
- ❖ Assuming the share is the same across race and age groups.





## POPULATION 2020 (Ages 0 to 95+)

### - DEATHS

[= Base Population \* Projected Death Rates]

### + NET MIGRANTS

[= International migrants  
+ Domestic Migrants]

AGE + 1

Population 2021  
(Ages 1 to 95+)

### + BIRTHS

[= Women 15 -49 \* Projected (ASFR) ]

Population 2021  
(Ages 1 to 95+)

PROJECTED POPULATION 2021 (Ages 0 to 95+)

TDC  
Population  
Projection  
Illustration

# Coming up

---



- County population projections
- TDC population projection webinar
- “Special” projections
  - ❖ Labor force
  - ❖ Household
  - ❖ Income
  - ❖ Other? – Population projections with different development scenarios?



*We would like to hear from you!!*



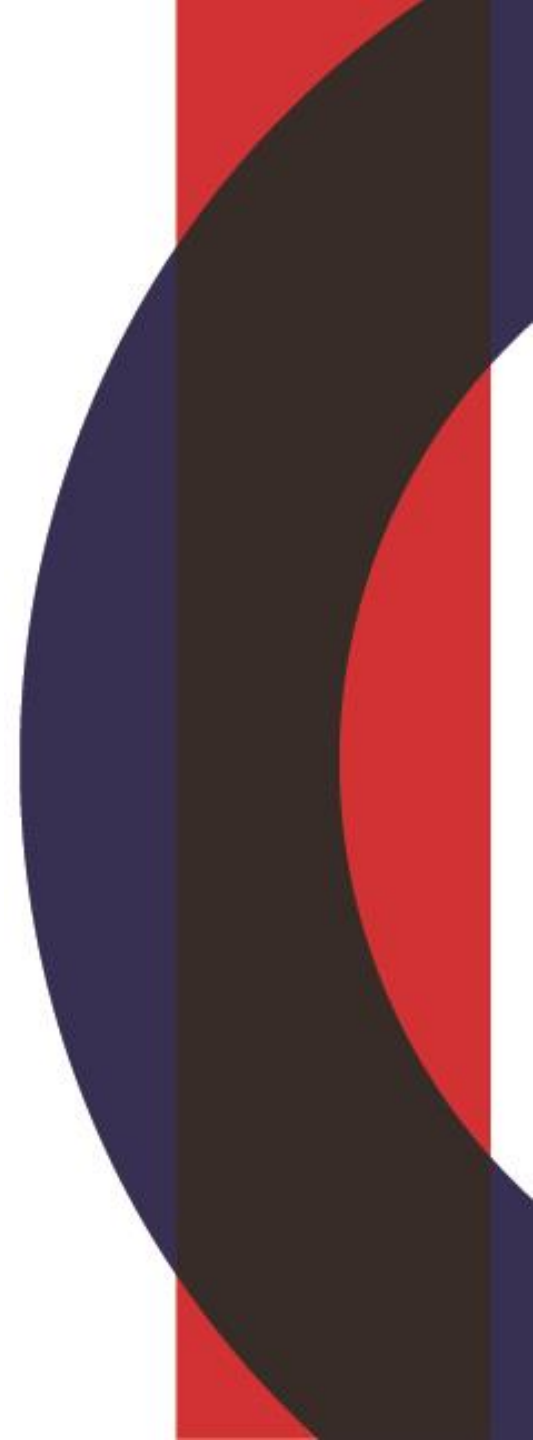
**Visit our website**




**Sign up for our  
newsletter**



**Follow us on  
social media**



# Helen You, Ph.D.

 (210) 458-6543

 TDC@UTSA.edu

 [demographics.texas.gov/](https://demographics.texas.gov/)

 @TexasDemography

