



---

# Demographic Change and Farming



## States with Most Population Growth, 2010 to 2020

	2010 Population	2020 Population	Numeric Change 2010-2020	Percent Change 2010-2020
United States	308,745,538	331,449,281	22,703,743	7.4%
Texas	25,145,561	29,145,505	3,999,944	15.9%
Florida	18,801,310	21,538,187	2,736,877	14.6%
California	37,253,956	39,538,223	2,284,267	6.1%
Georgia	9,687,653	10,711,908	1,024,255	10.6%
Washington	6,724,540	7,705,281	980,741	14.6%
North Carolina	9,535,483	10,439,388	903,905	9.5%
New York	19,378,102	20,201,249	823,147	4.2%
Arizona	6,392,017	7,151,502	759,485	11.9%
Colorado	5,029,196	5,773,714	744,518	14.8%
Virginia	8,001,024	8,631,393	630,369	7.9%
Tennessee	6,346,105	6,910,840	564,735	8.9%
Utah	2,763,885	3,271,616	507,731	18.4%



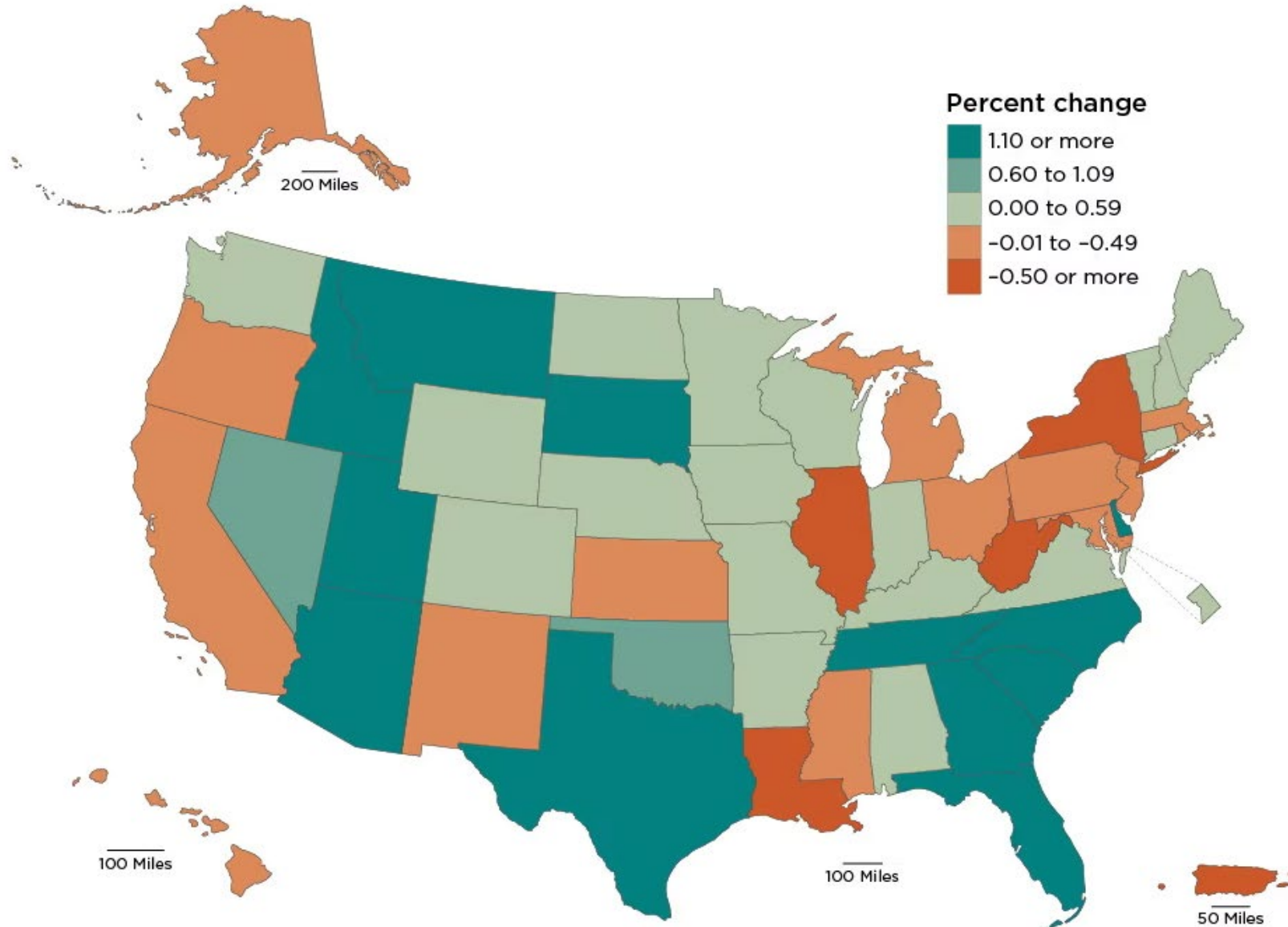
# States with Most Population Growth, 2020 to 2022

## Population Estimate (as of July 1)

Geographic Area	2020	2021	2022	Change 21-22	Rank Change 21-22	Pct. Change 21-22	Rank Pct. Change 21-22
United States	331,511,512	332,031,554	333,287,557	1,256,003		0.4%	
Texas	29,232,474	29,558,864	30,029,572	470,708	1	1.6%	4
Florida	21,589,602	21,828,069	22,244,823	416,754	2	1.9%	1
North Carolina	10,449,445	10,565,885	10,698,973	133,088	3	1.3%	9
Georgia	10,729,828	10,788,029	10,912,876	124,847	4	1.2%	12
Arizona	7,179,943	7,264,877	7,359,197	94,320	5	1.3%	8
South Carolina	5,131,848	5,193,266	5,282,634	89,368	6	1.7%	3
Tennessee	6,925,619	6,968,351	7,051,339	82,988	7	1.2%	11
Washington	7,724,031	7,740,745	7,785,786	45,041	8	0.6%	16
Utah	3,283,785	3,339,113	3,380,800	41,687	9	1.2%	10
Idaho	1,849,202	1,904,314	1,939,033	34,719	10	1.8%	2

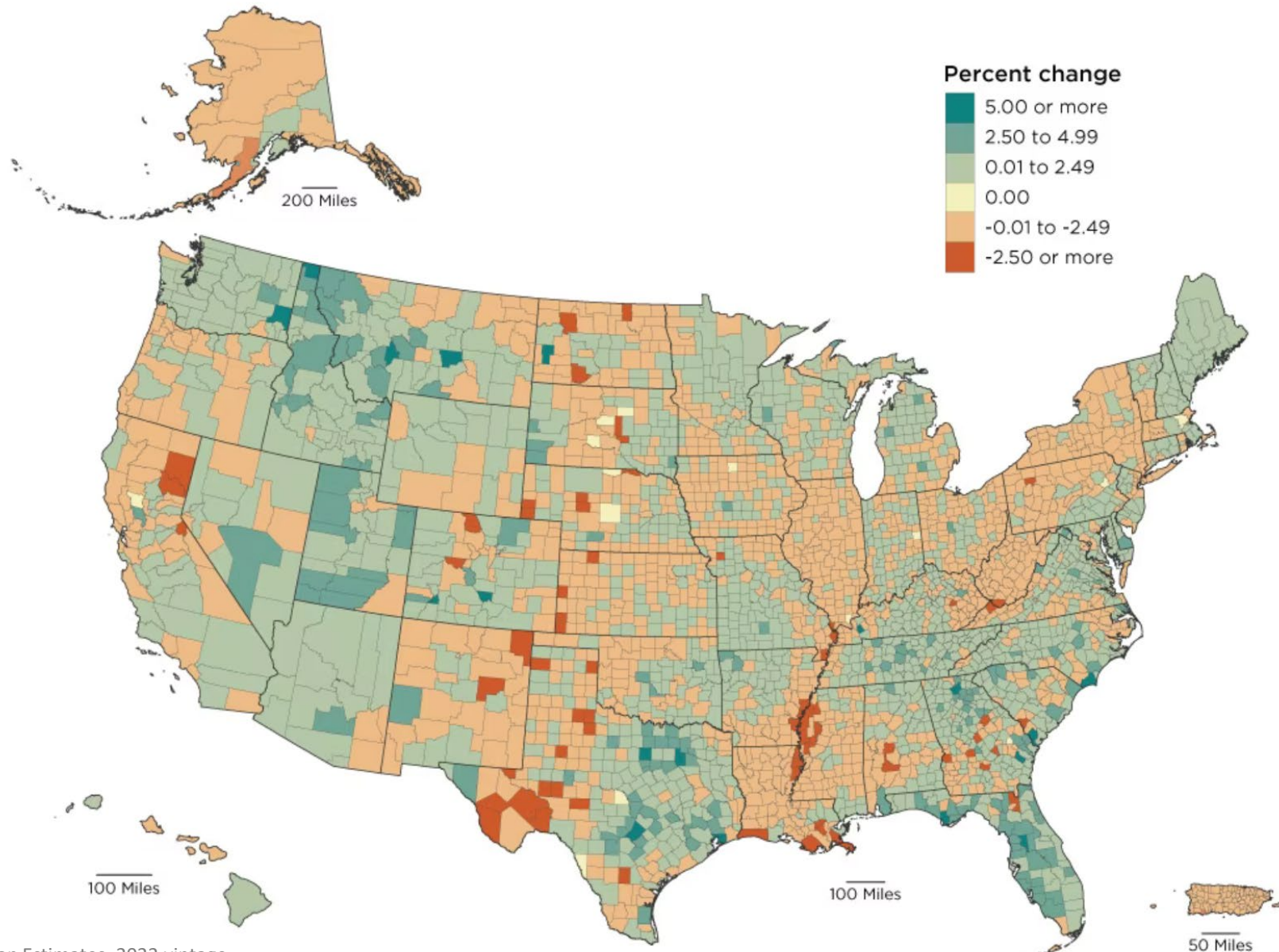


# Percent Change in State Population: July 1, 2021 to July 1, 2022

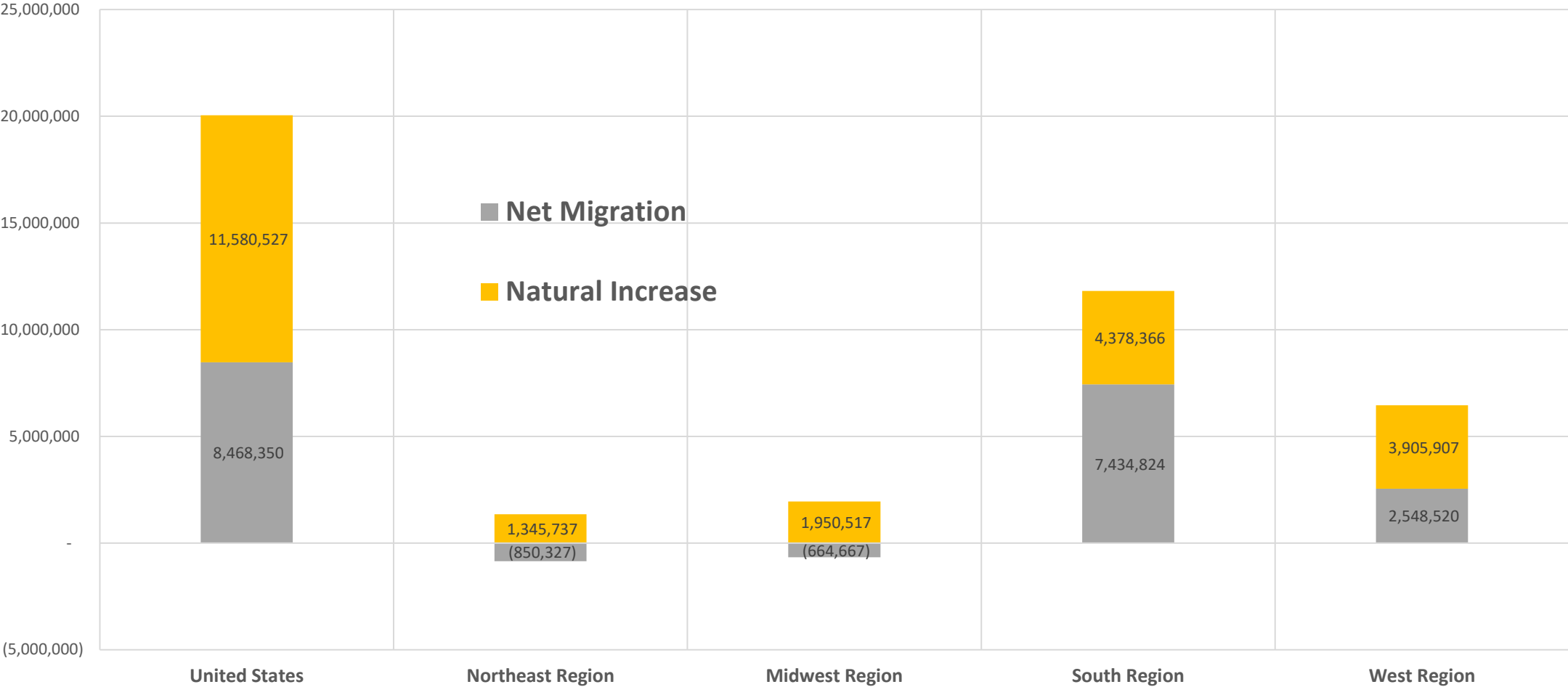




# Percent Change in County Population: July 1, 2021 to July 1, 2022

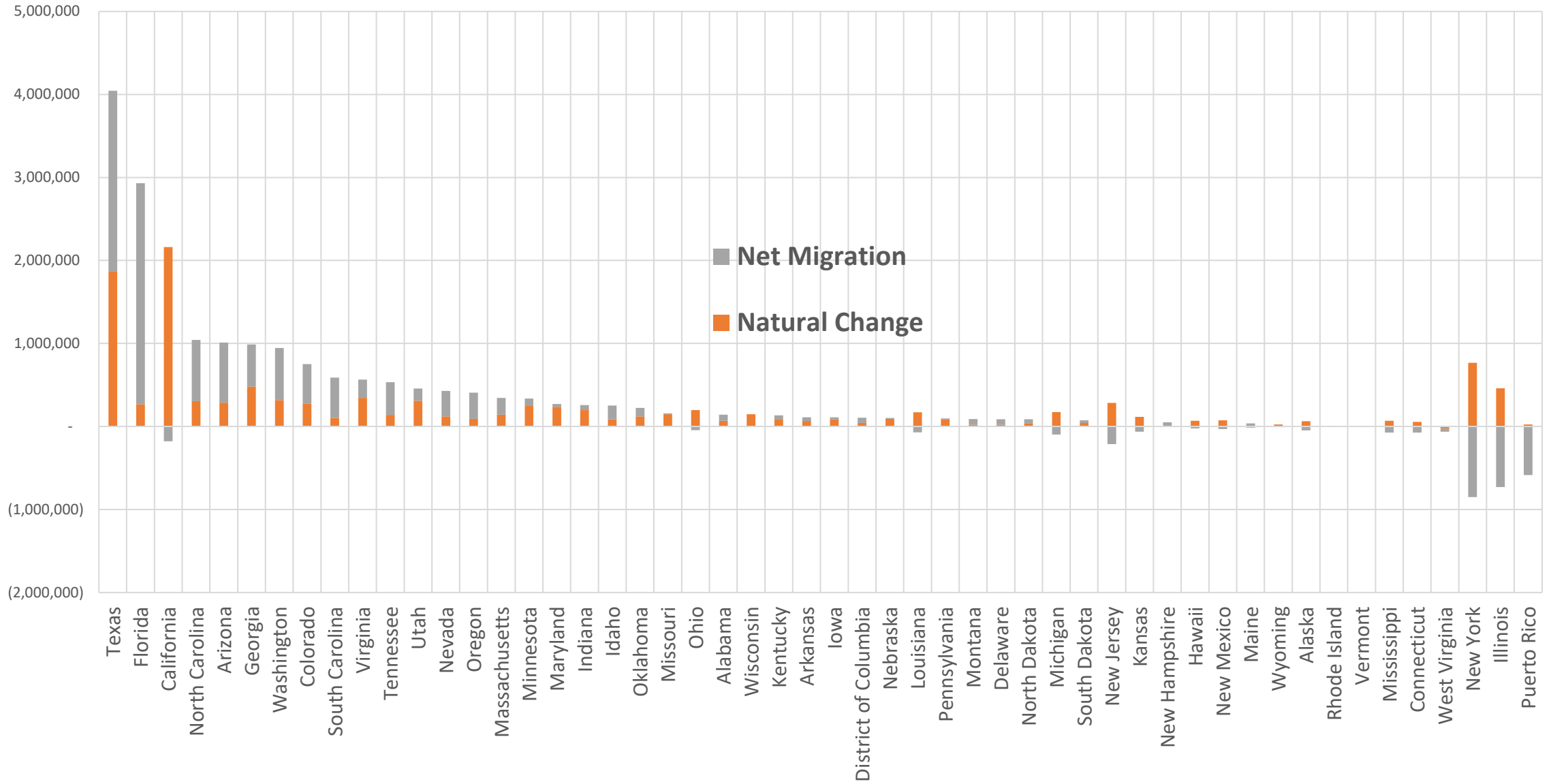


# Population change and components of change for states, 2010 to 2020



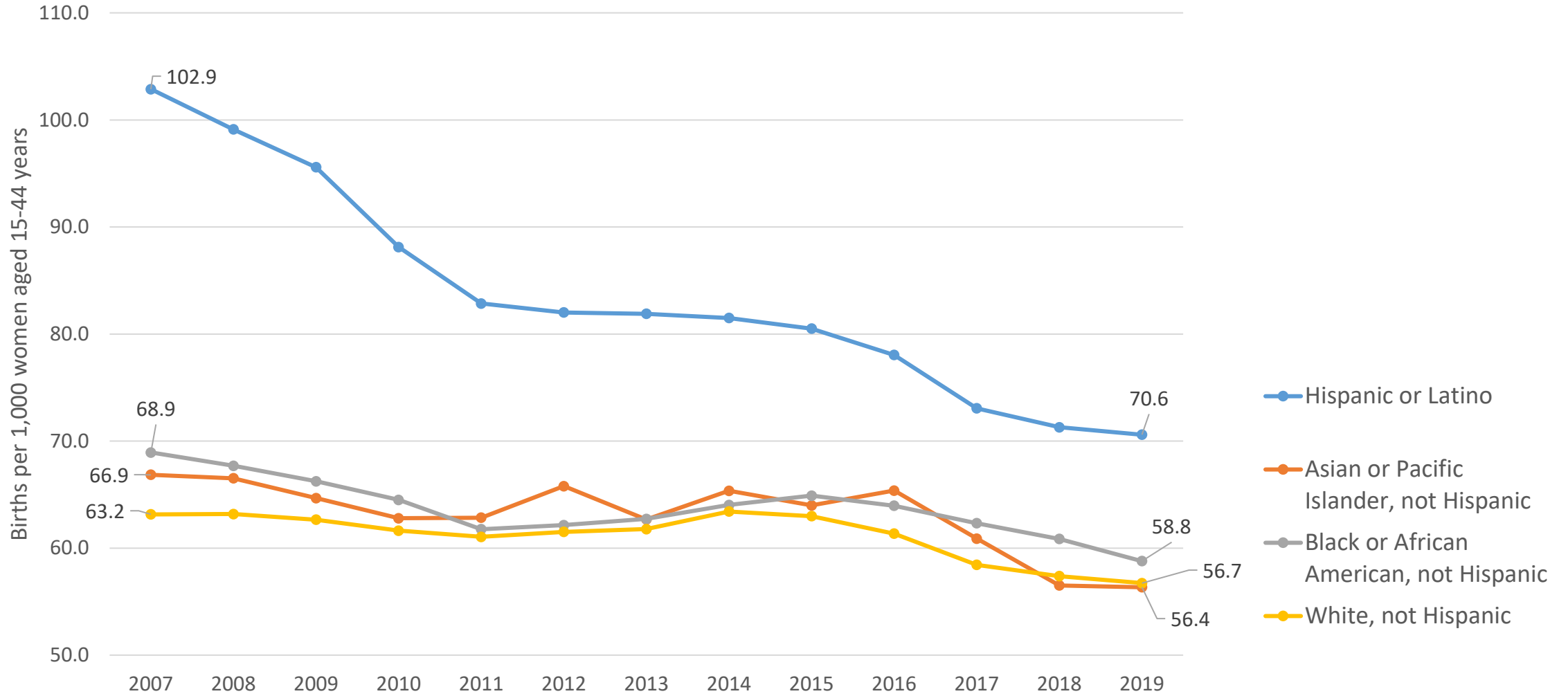
SOURCE: US Census Bureau, Population Estimates, 2020 vintage

# Population change and components of change for states, 2010 to 2020





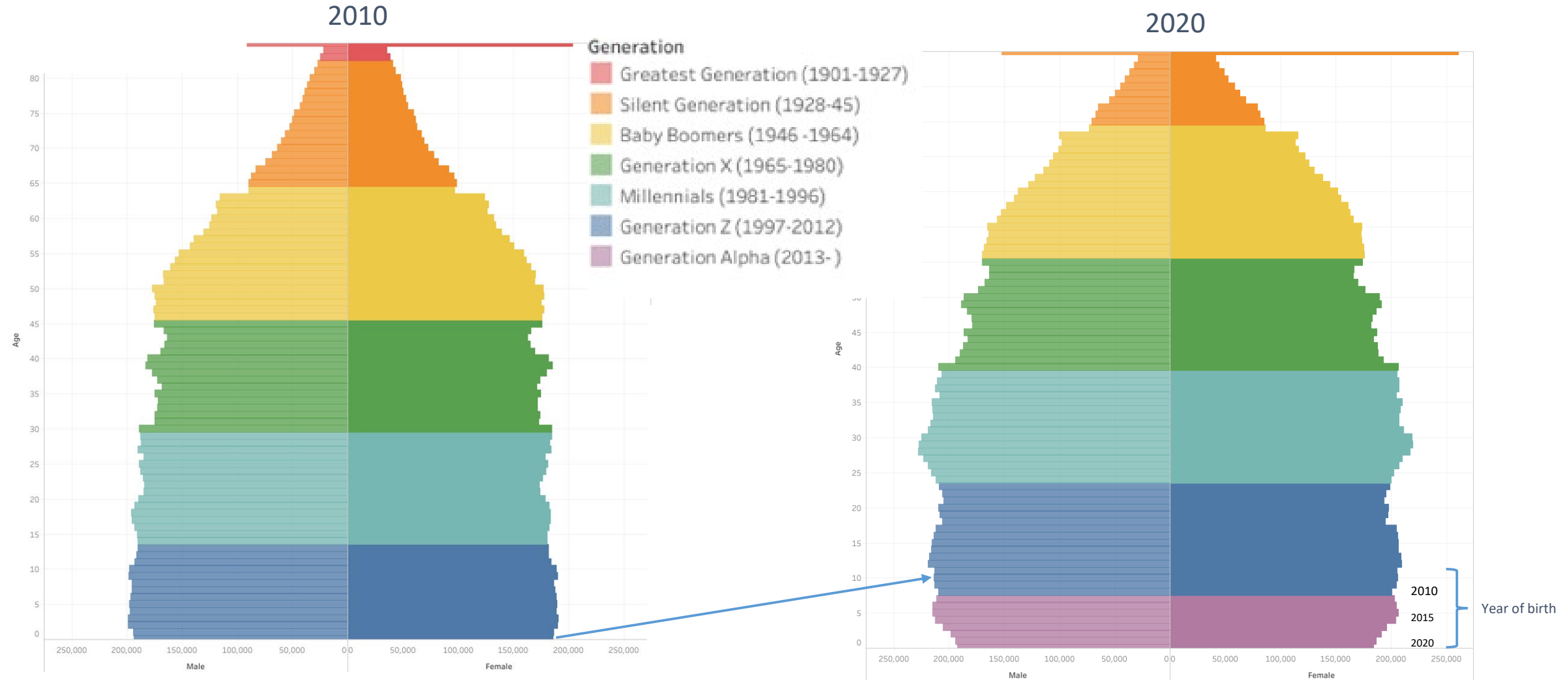
# Texas Birth Rates, 2007-2019





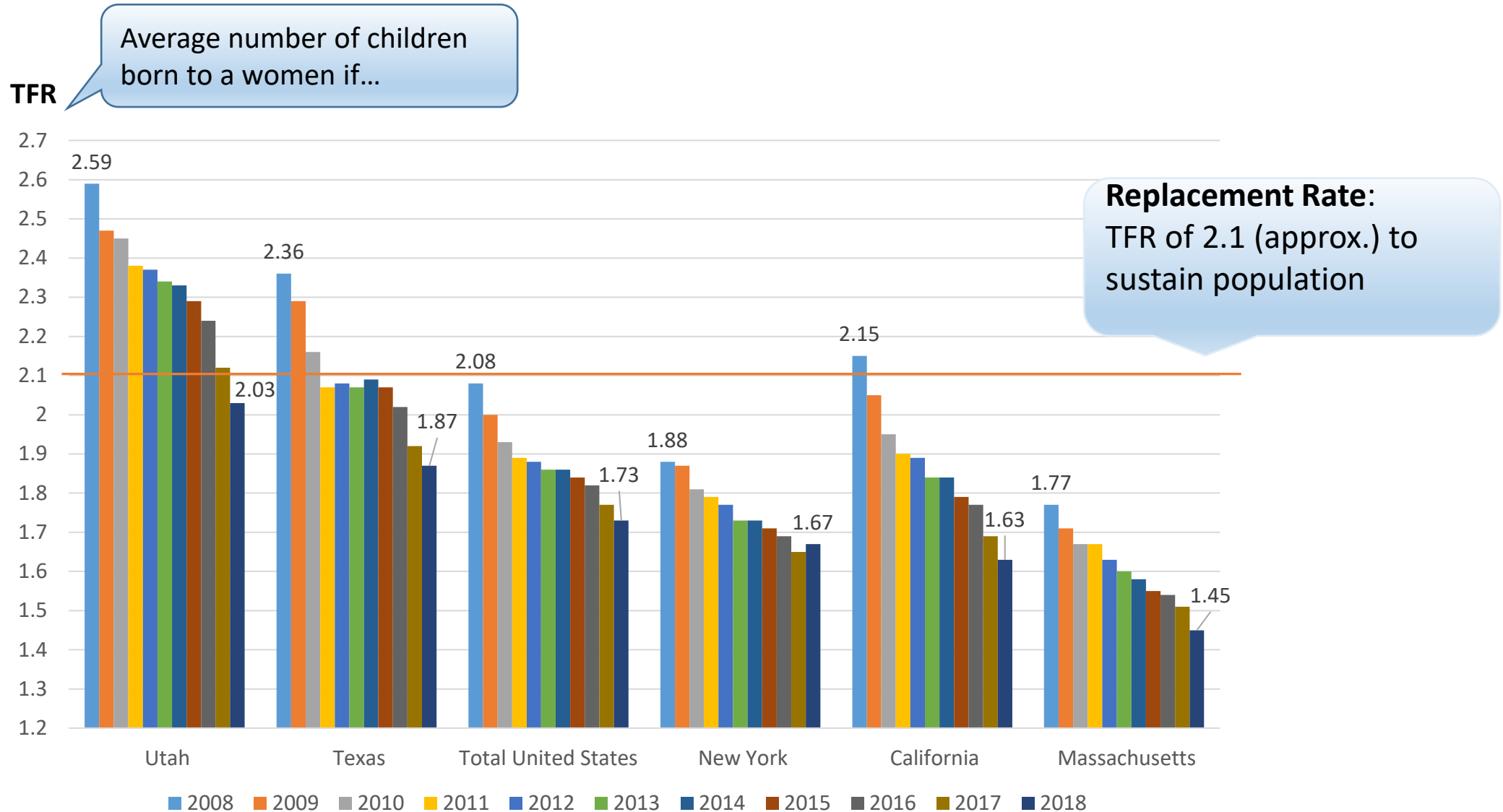
# Generational Population Pyramids, Texas, 2010-2020

Texas Population Pyramids 2010-2020



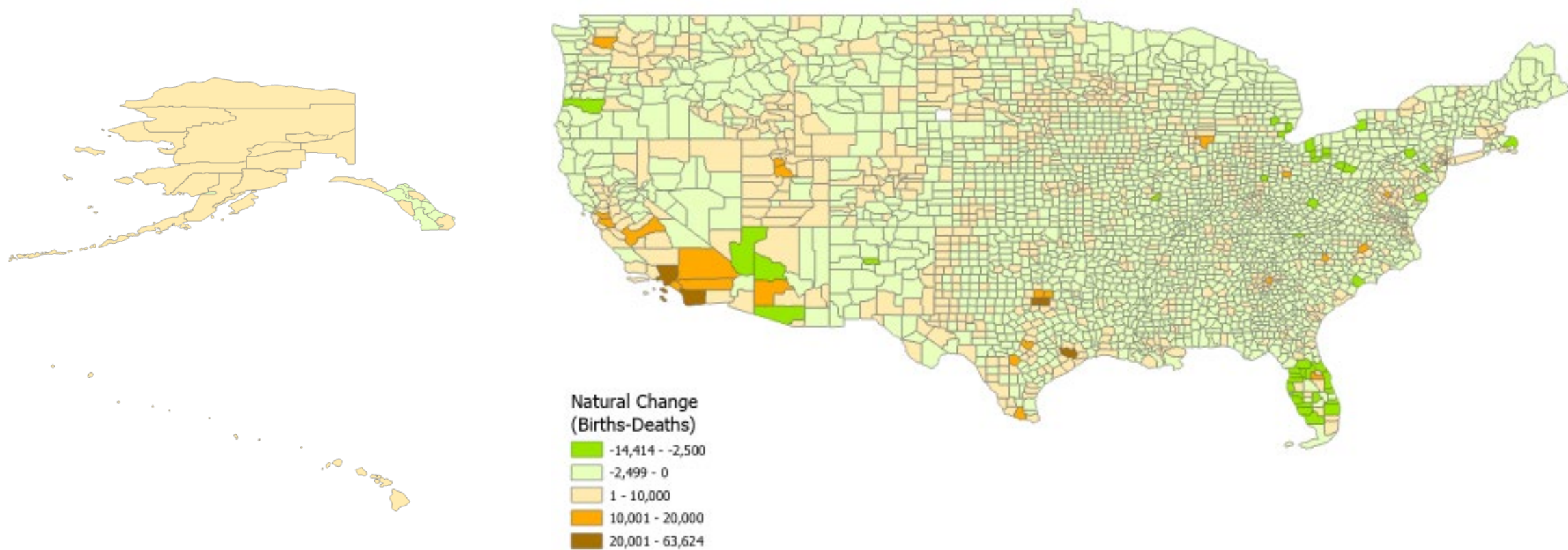


## Total Fertility Rate (TFR) for Select States, 2008-2018



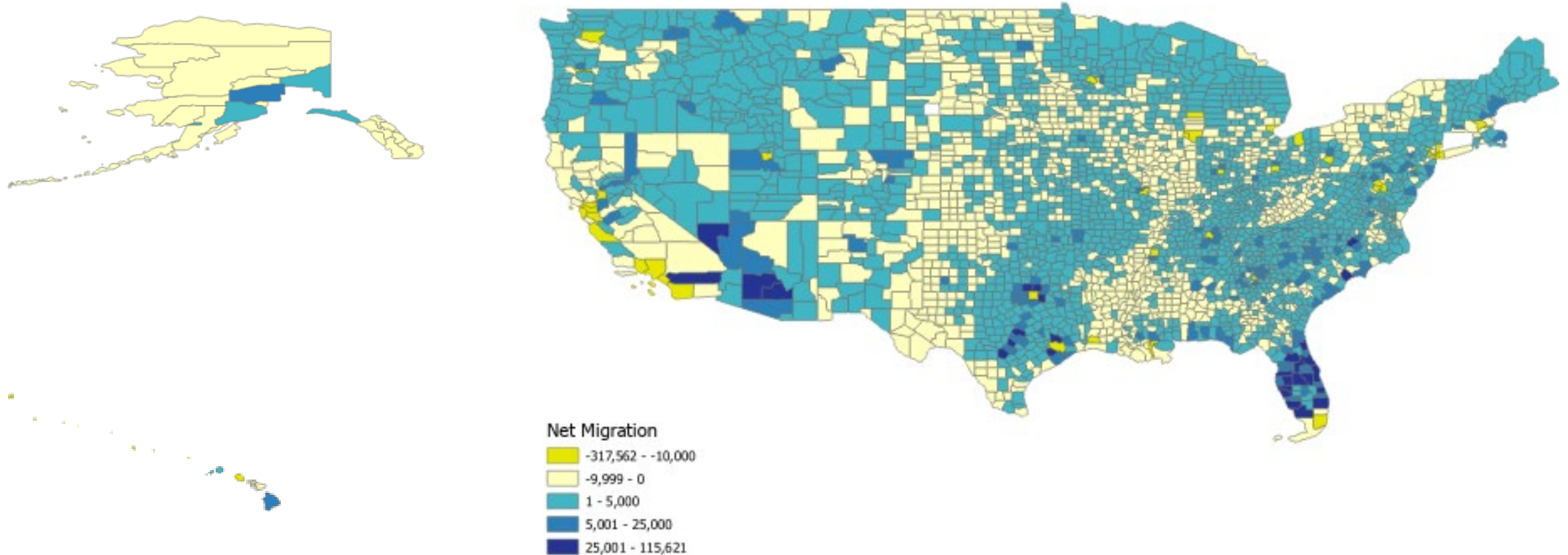


# Natural Change, U.S. Counties, 2020-2022



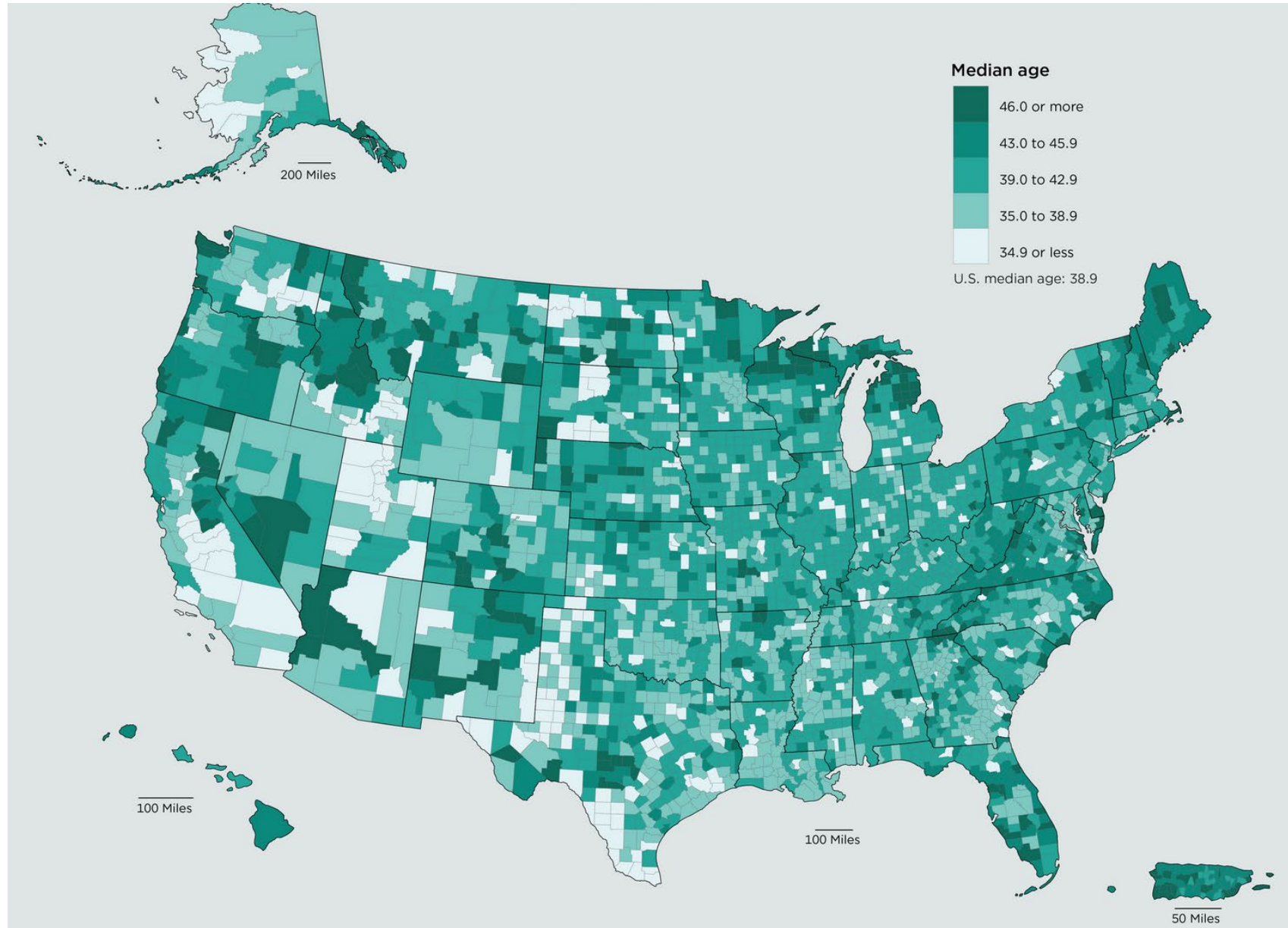


# Net Migration, U.S. Counties, 2020-2022



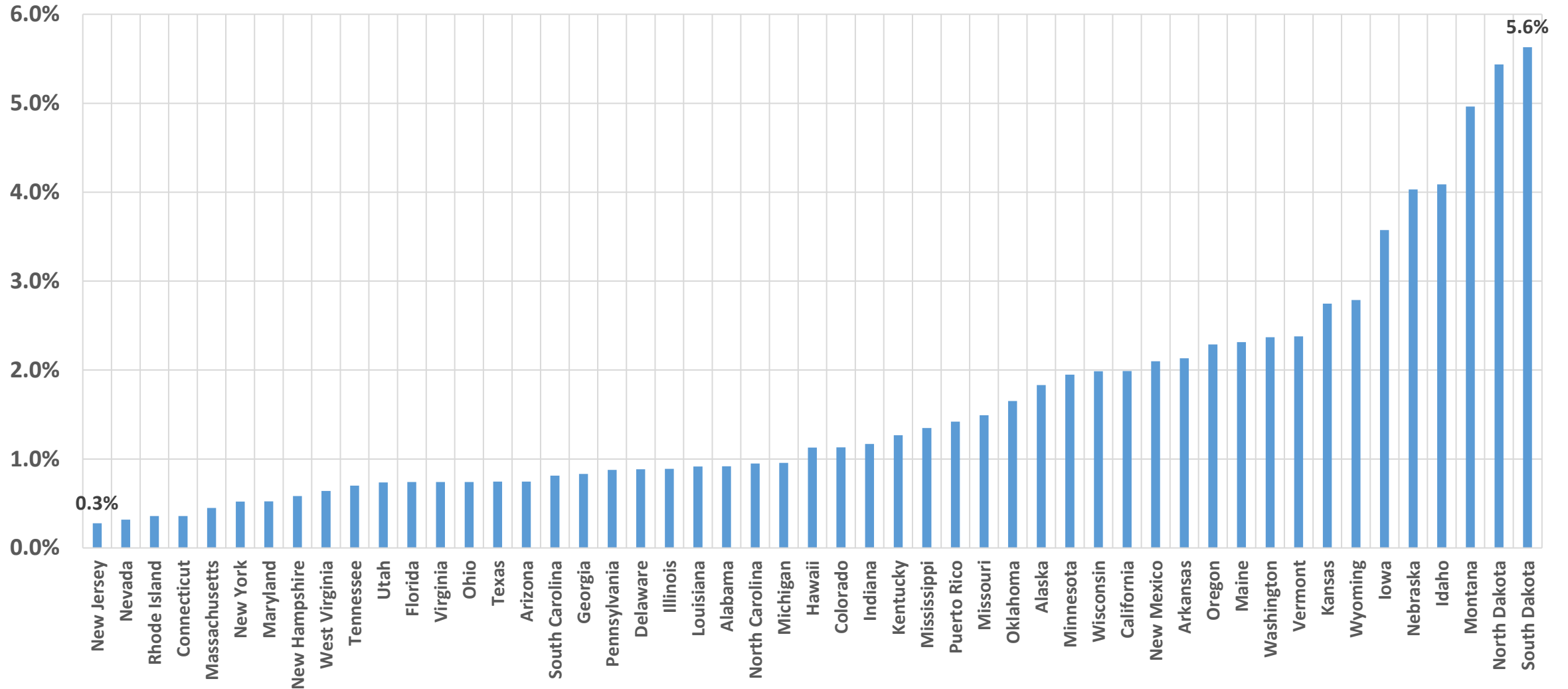


# Median Age by County: July 1, 2022



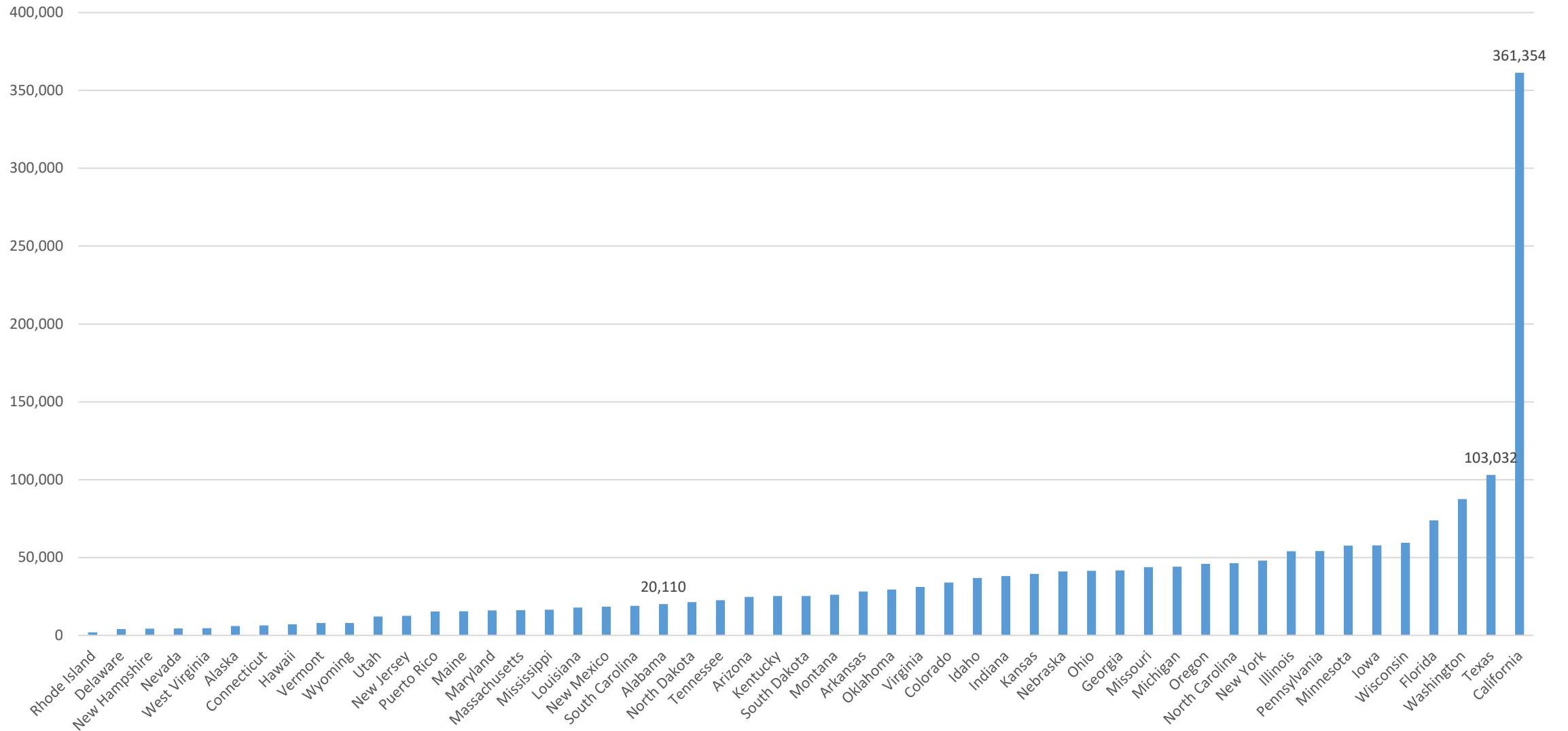


# Percent of the labor force working in agricultural occupations,\* States, 2021



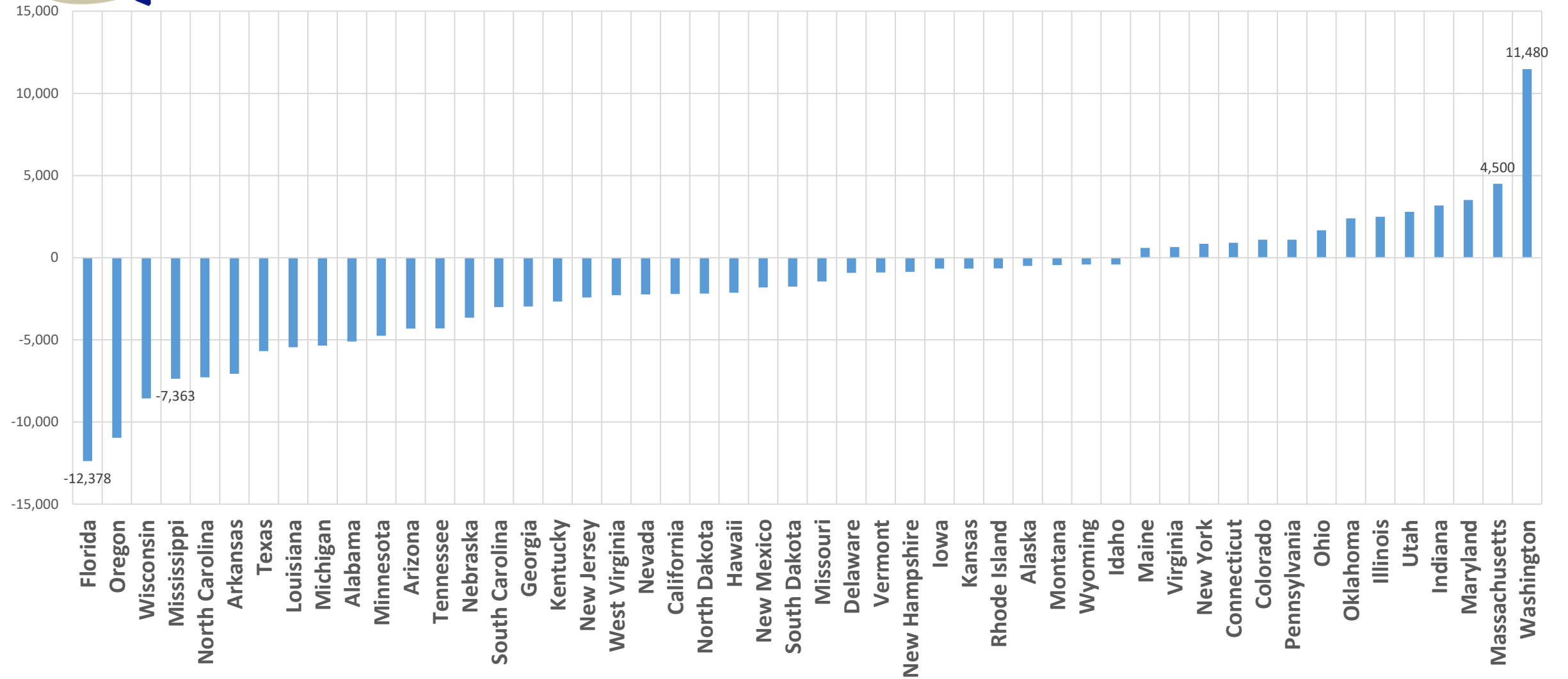


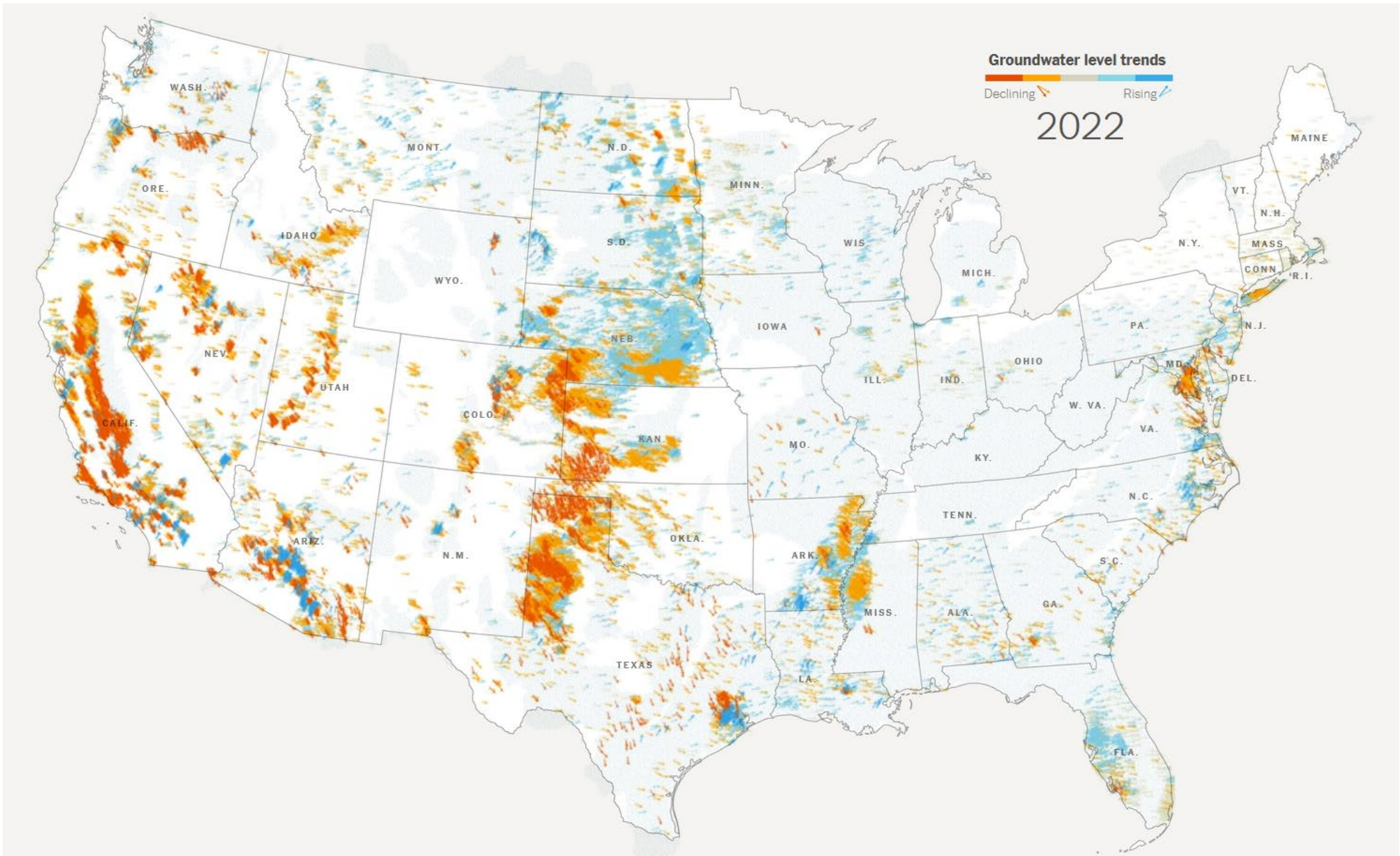
# Estimated number of workers in agricultural occupations,\* States, 2021





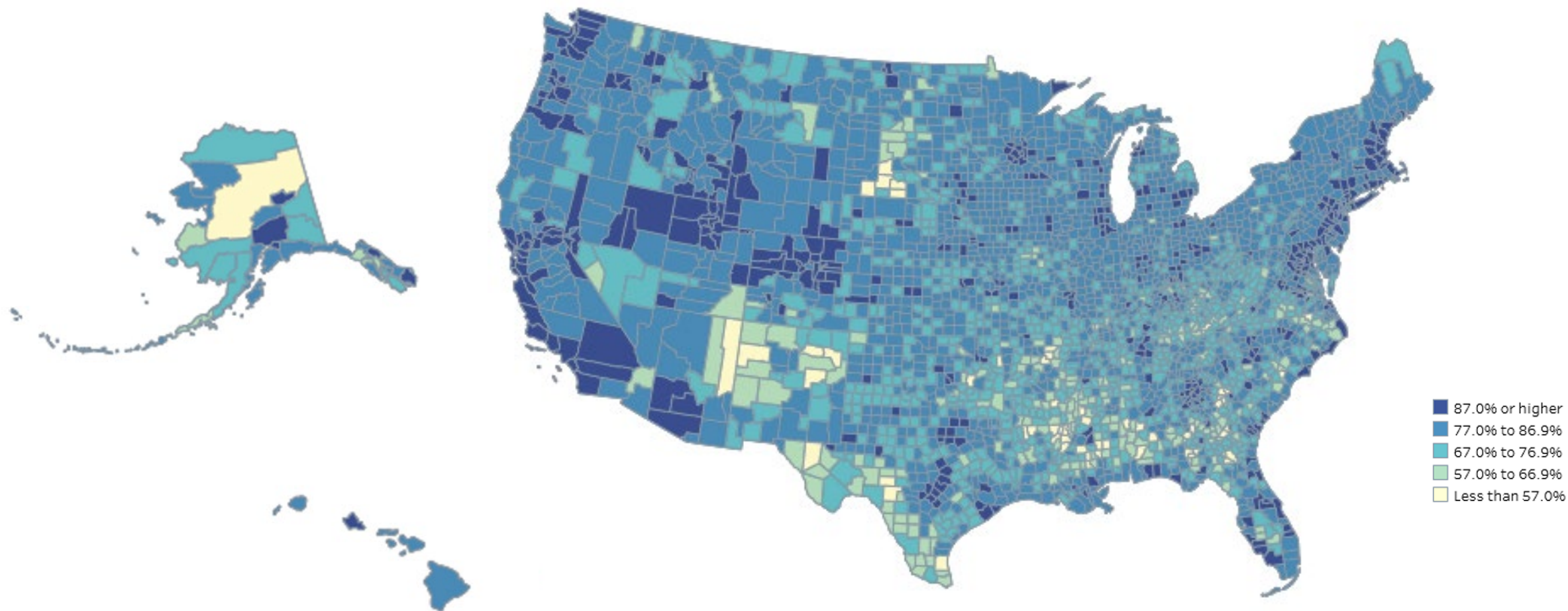
# Estimated change in the number of workers in agricultural occupations\* from 2011 to 2021, States







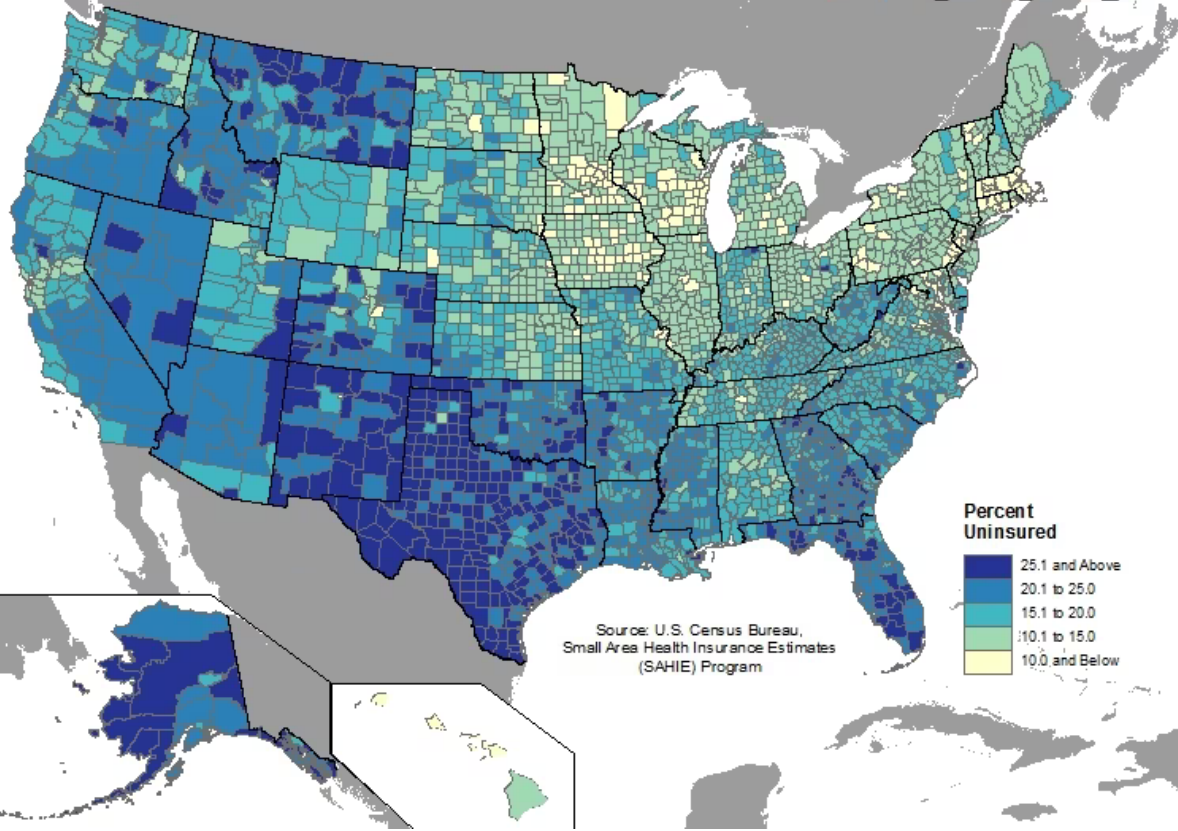
# Households With a Broadband Internet Subscription: 2016–2020



# Small Area Health Insurance Estimates (SAHIE)

Percent uninsured under age 65

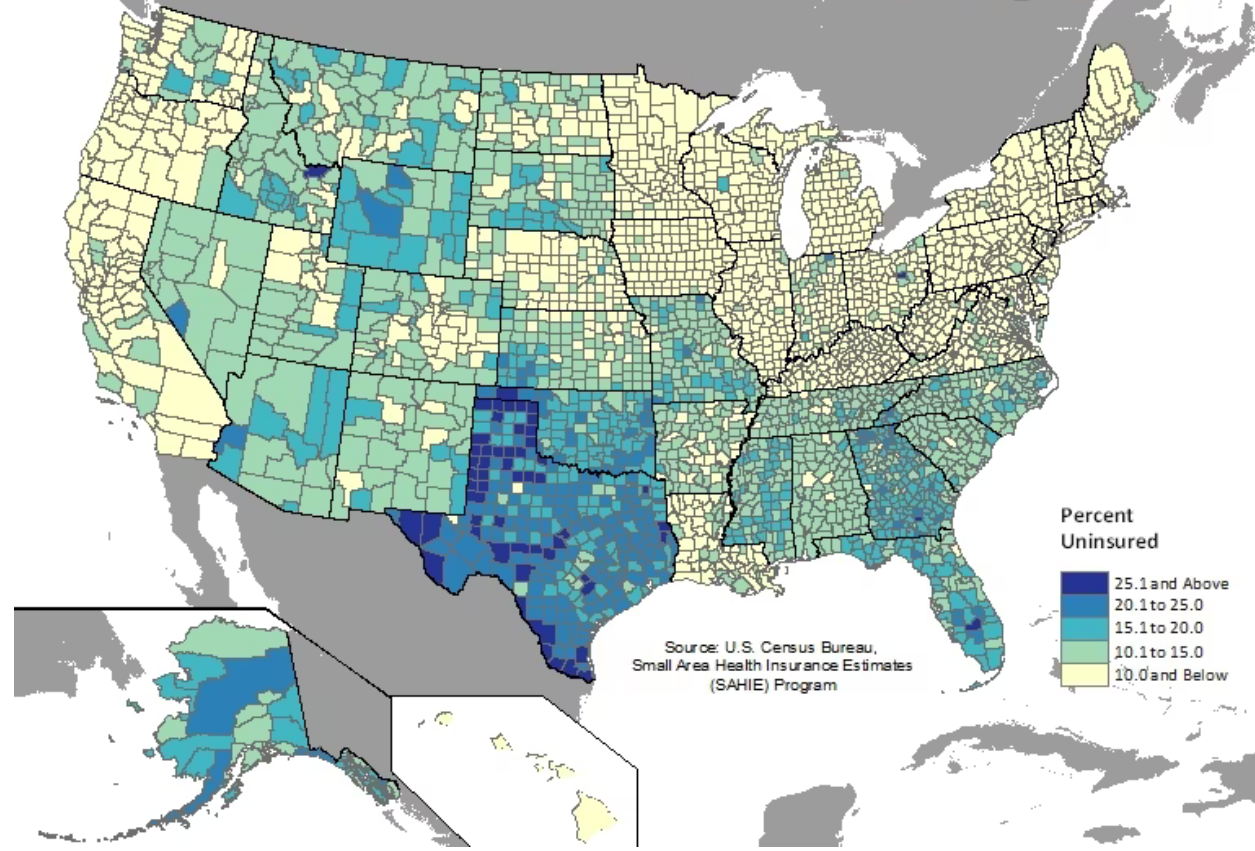
# 2008



# Small Area Health Insurance Estimates (SAHIE)

Percent uninsured under age 65

# 2021





---

# Lloyd Potter, Ph.D.



(210) 458-6530



TDC@UTSA.edu



Demographics.Texas.gov



@TexasDemography