

# Demographic and Socioeconomic Trends in Texas and the North Texas Area

Presented to



January 27, 2023



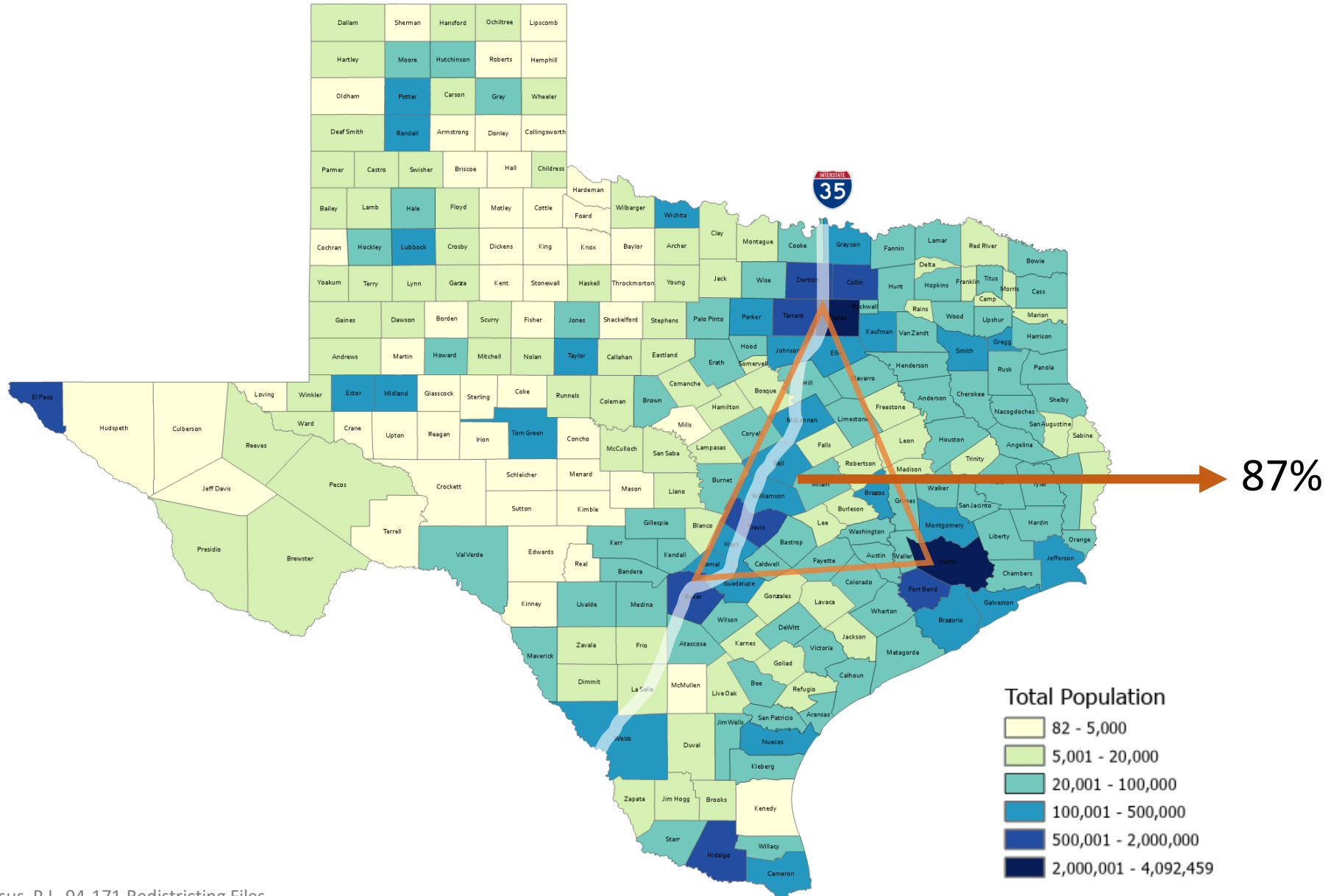


## Population Change, the US and Selected States, 2010-2020, 2020-2021, 2021-2022

	2010 Population	2020 Population	Numeric Change 2010-2020	Percent Change 2010-2020	Numeric Change 2020-2021	Percent Change 2020-2021	Numeric Change 2021-2022	Percent Change 2021-2022
United States	308,745,538	331,449,281	22,703,743	7.4%	520,042	0.16%	1,256,003	0.38%
<b>Texas</b>	<b>25,145,561</b>	<b>29,145,505</b>	<b>3,999,944</b>	<b>15.9%</b>	<b>326,390</b>	<b>1.12%</b>	<b>470,708</b>	<b>1.59%</b>
Florida	18,801,310	21,538,187	2,736,877	14.6%	238,467	1.11%	416,754	1.91%
California	37,253,956	39,538,223	2,284,267	6.1%	-358,662	-0.91%	-113,649	-0.29%
New York	19,378,102	20,201,249	823,147	4.2%	-250,804	-1.24%	-180,341	-0.91%
Arizona	6,392,017	7,151,502	759,485	11.9%	84,934	1.19%	94,320	1.30%
Colorado	5,029,196	5,773,714	744,518	14.8%	26,432	0.46%	28,629	0.49%
Utah	2,763,885	3,271,616	507,731	18.4%	55,328	1.69%	41,687	1.25%

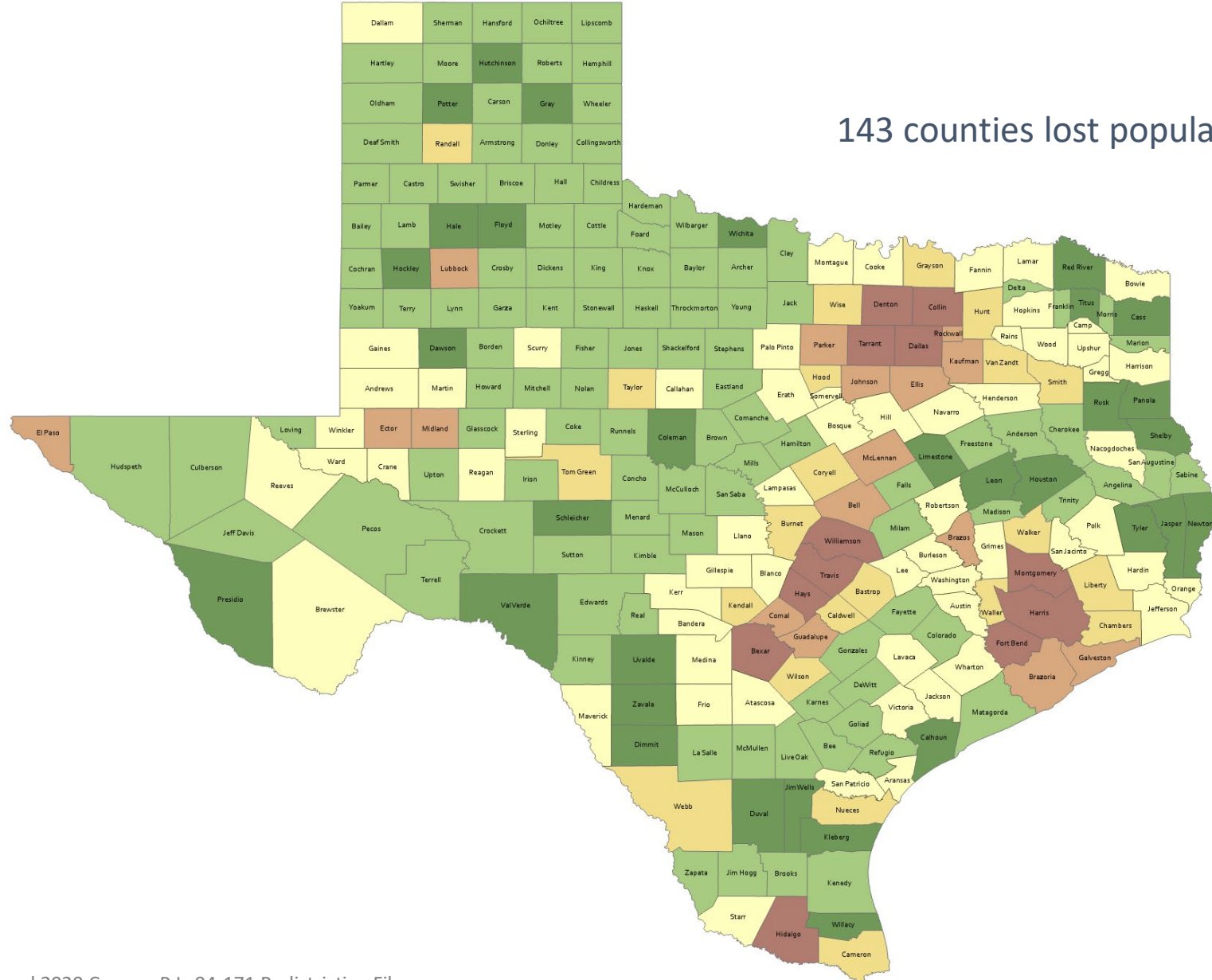


# Census 2020 Population, Texas Counties





# Numeric Change, Texas Counties, 2010-2020



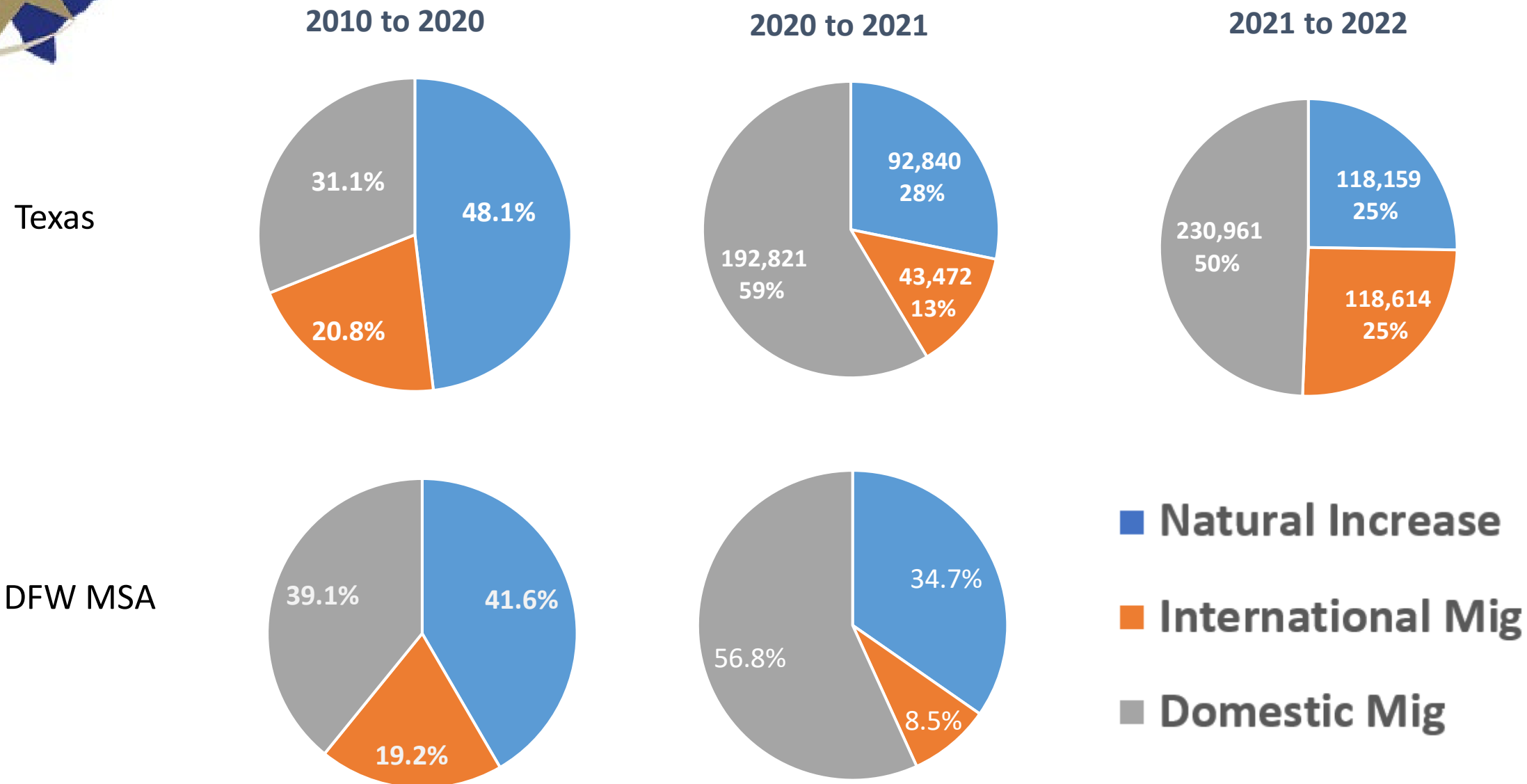


# Population Change, the North Texas Region, 2010-2020, 2020-2021

	2010 Population	2020 Population	Numeric Change 2010-2020	Annual % Change 2010-2020	Numeric Change 2020-2021	Annual % Change 2020-2021
<b>DFW MSA</b>	<b>6,426,214</b>	<b>7,708,190</b>	<b>1,281,976</b>	<b>2.0%</b>	<b>99,814</b>	<b>1.3%</b>
<b>As % of TX</b>	<b>25.6%</b>	<b>26.4%</b>	<b>32.0%</b>		<b>32.2%</b>	
Dallas	2,368,139	2,613,539	245,400	1.0%	-24,907	-1.0%
Tarrant	1,809,034	2,110,640	301,606	1.7%	11,768	0.6%
Collin	782,341	1,064,465	282,124	3.6%	36,313	3.4%
Denton	662,614	906,422	243,808	3.7%	27,747	3.0%
Ellis	149,610	192,455	42,845	2.9%	8,406	4.3%
Johnson	150,934	179,927	28,993	1.9%	6,547	3.6%
Kaufman	103,350	145,310	41,960	4.1%	10,782	7.3%
Rockwall	78,337	107,819	29,482	3.8%	7,291	6.7%



# Estimated Components of Population Change, Texas and North Texas



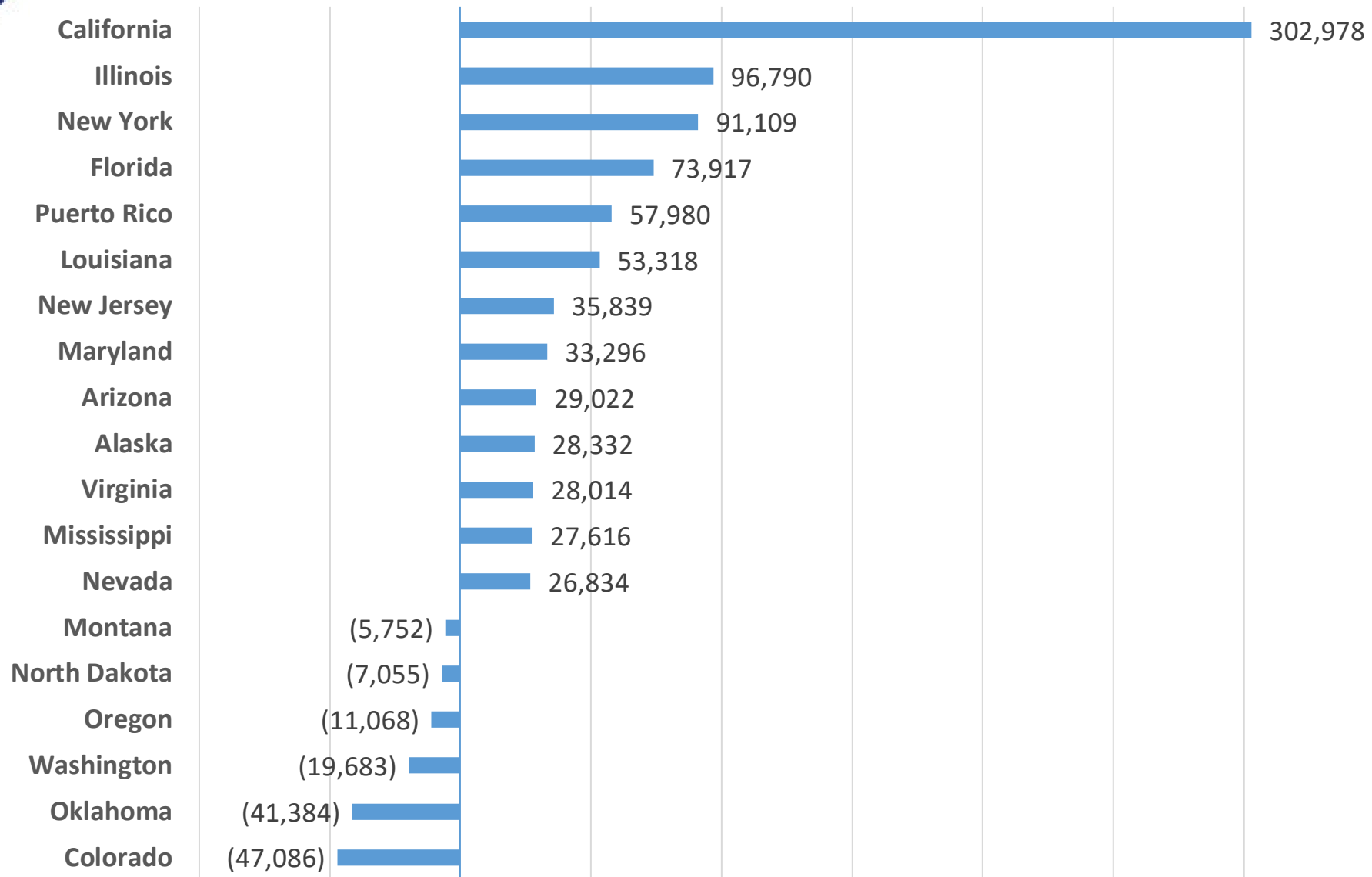


## Estimated Components of Population Change for Selected Counties in the NTX Region, 2010-2020

	Pop Change 2010-2020	Natural Change		International Migration		Domestic Migration	
Dallas County	2,368,139		87.9%		44.3%		-32.3%
Tarrant County	1,809,034		49.9%		19.9%		30.2%
Collin County	782,341		23.6%		16.9%		59.5%
Denton County	662,614		24.6%		8.9%		66.6%
Johnson County	150,934		24.2%		1.1%		74.8%
Ellis County	149,610		21.5%		2.1%		76.4%
Kaufman County	103,350		17.3%		1.4%		81.3%
Rockwall County	78,337		14.8%		3.4%		81.8%



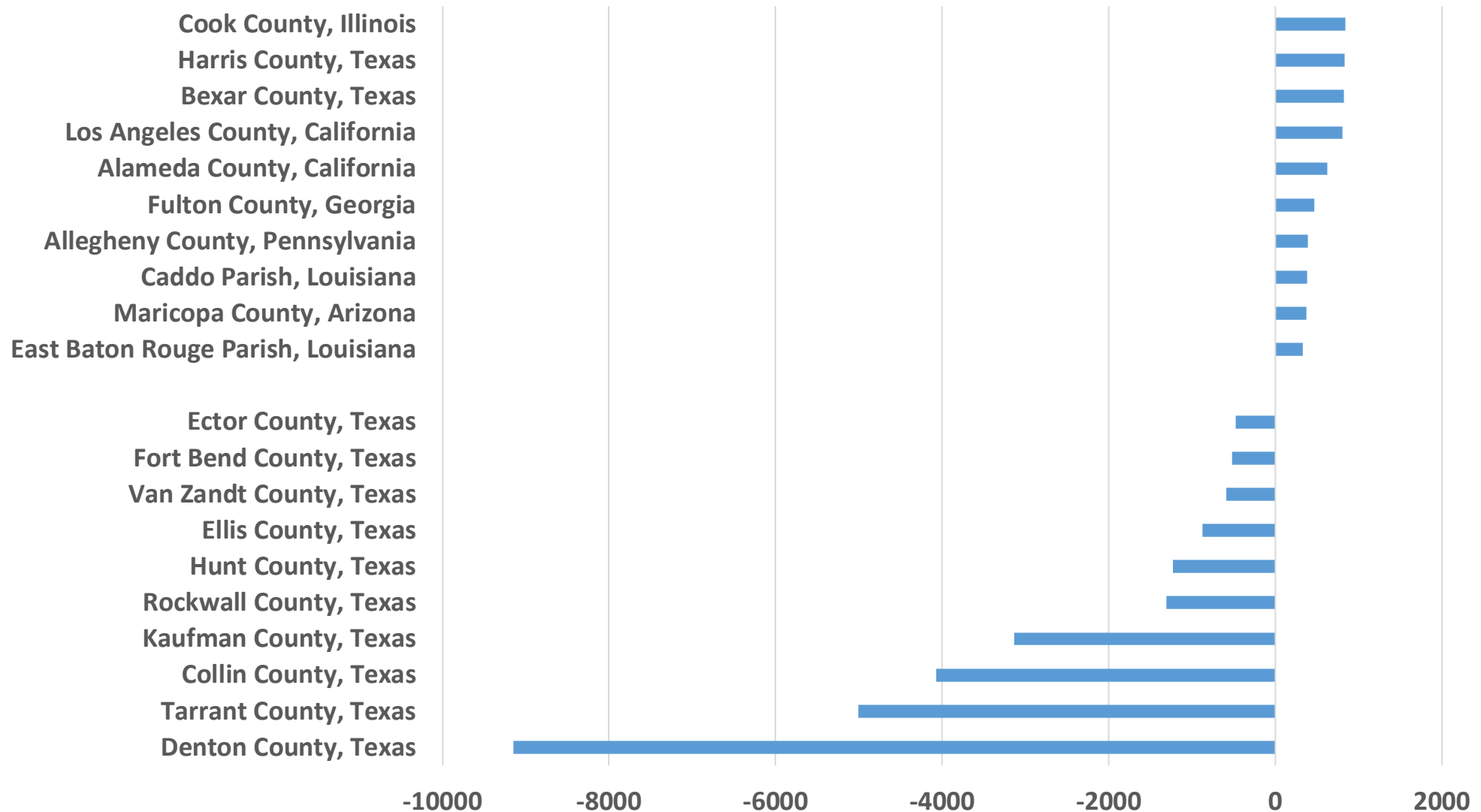
## Estimated Net Domestic Migrants Between Texas and Other States, 2010-2019







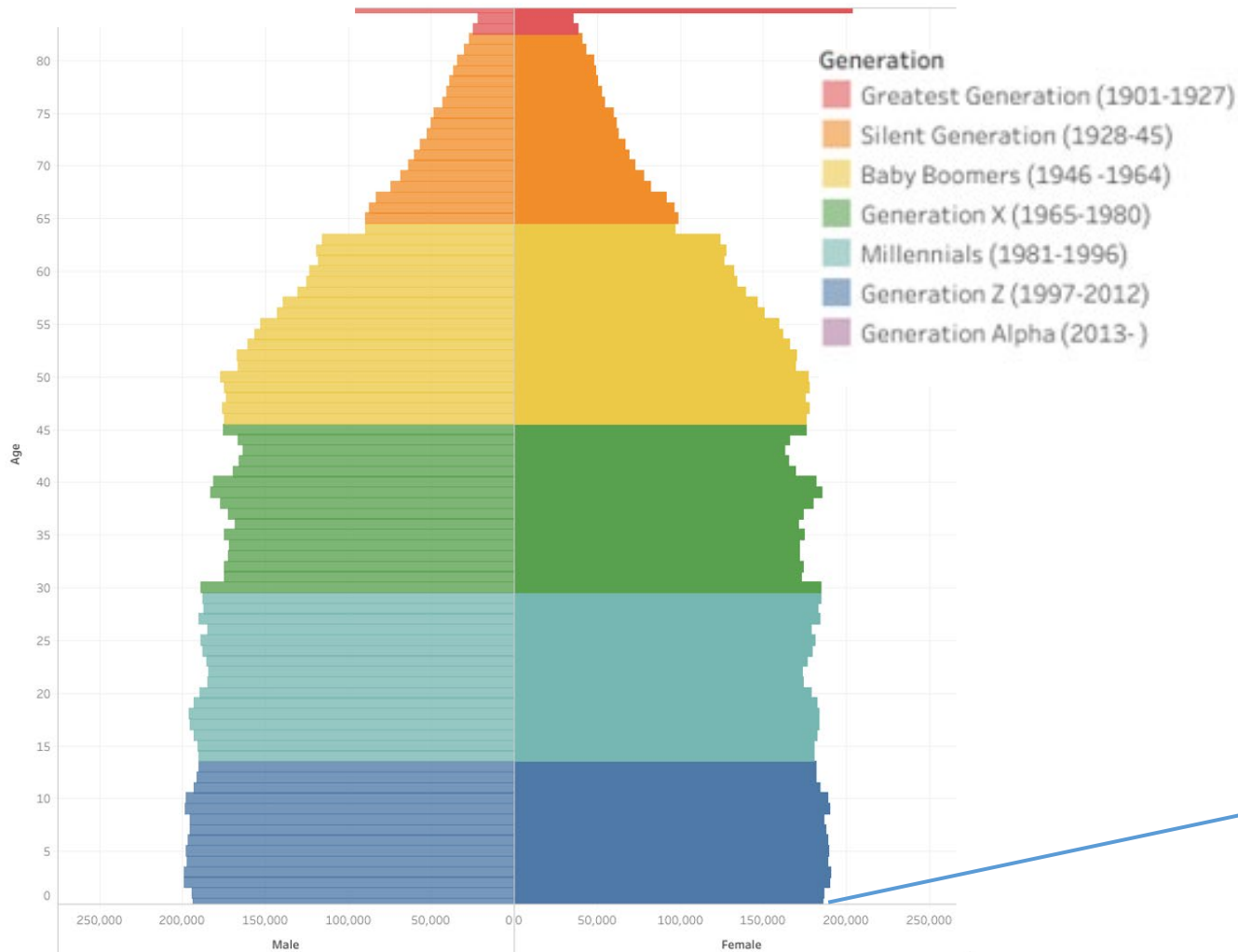
## Estimated Net Domestic Migrants Between Dallas County, TX and Other Counties, 2015-2019



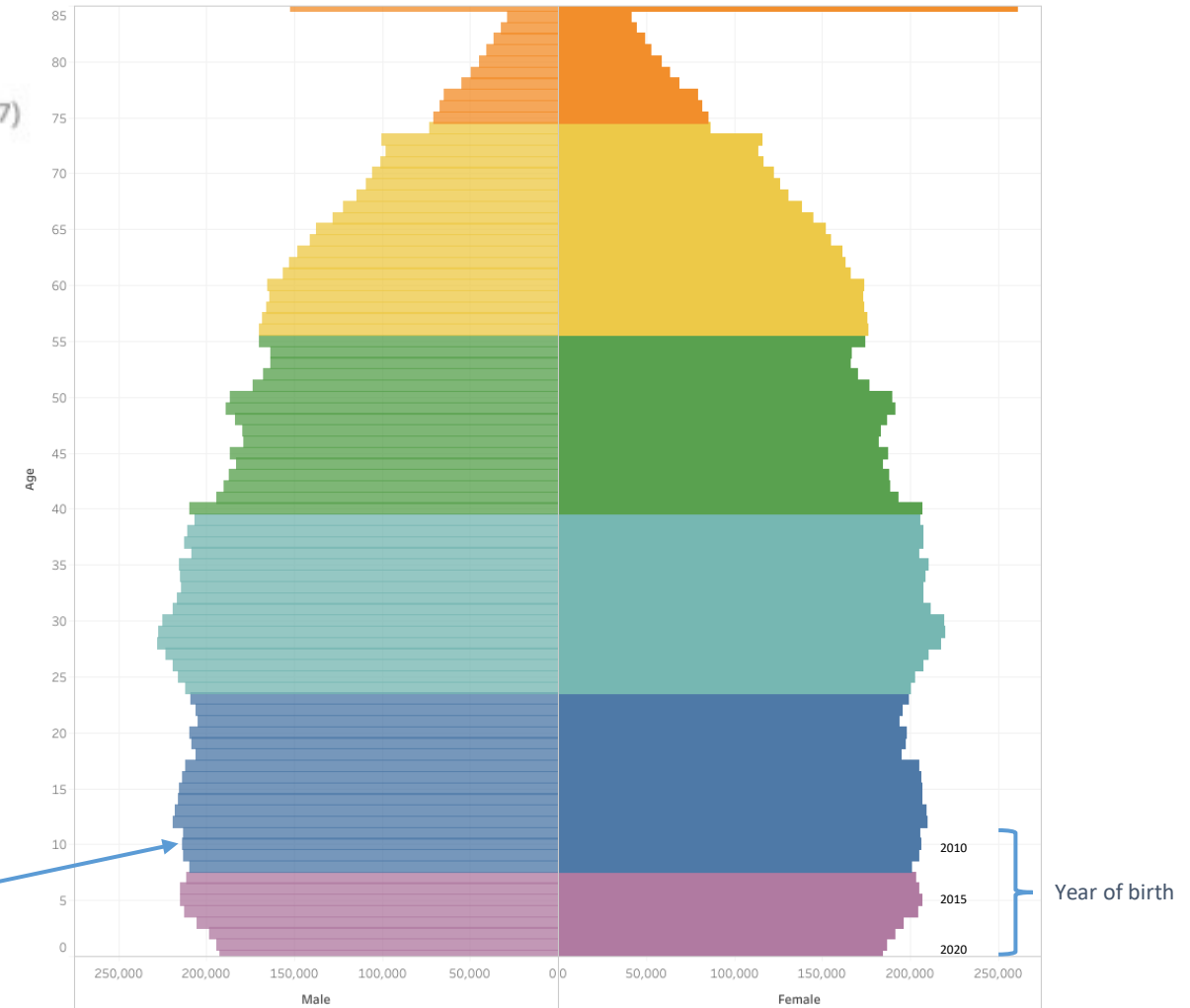


# Generational Population Pyramids, Texas, 2010 and 2020

2010

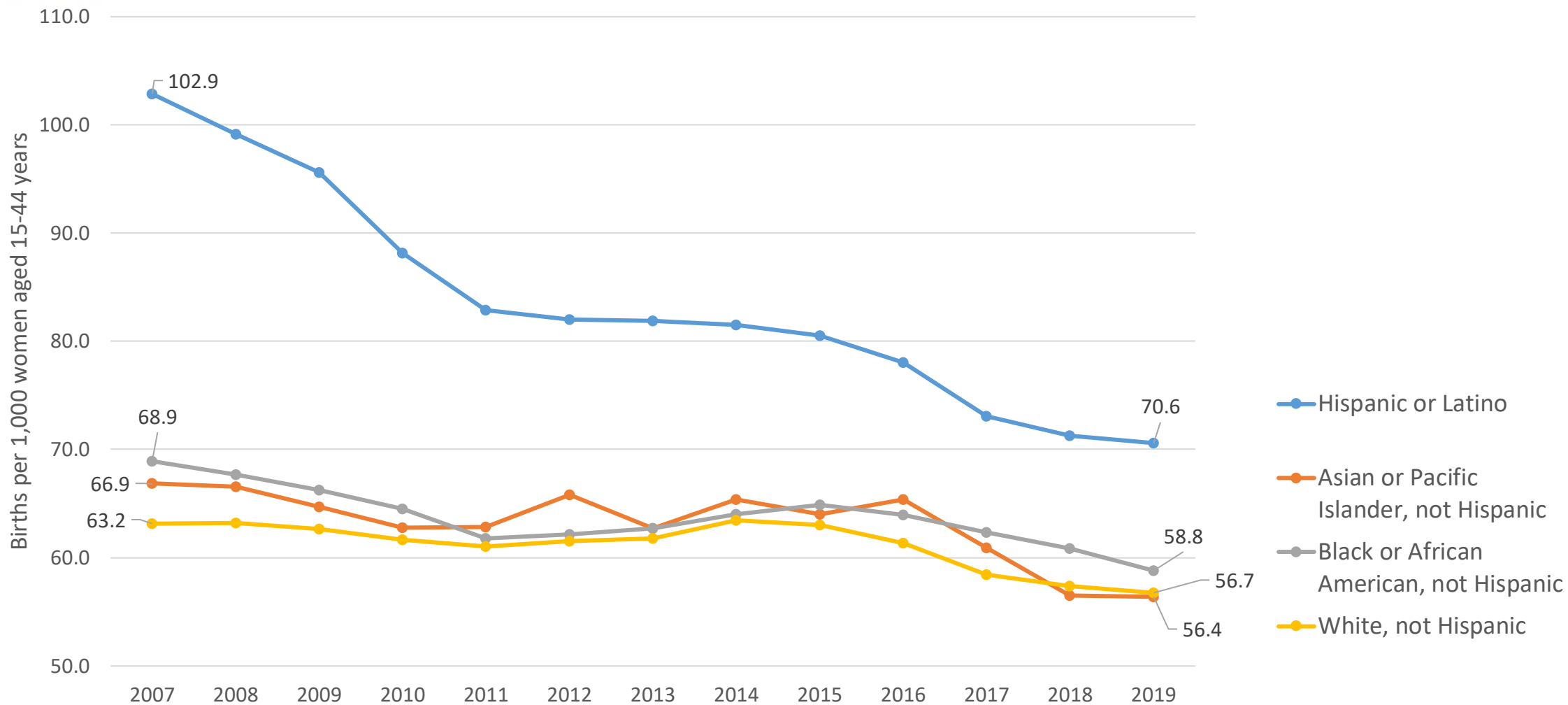


2020





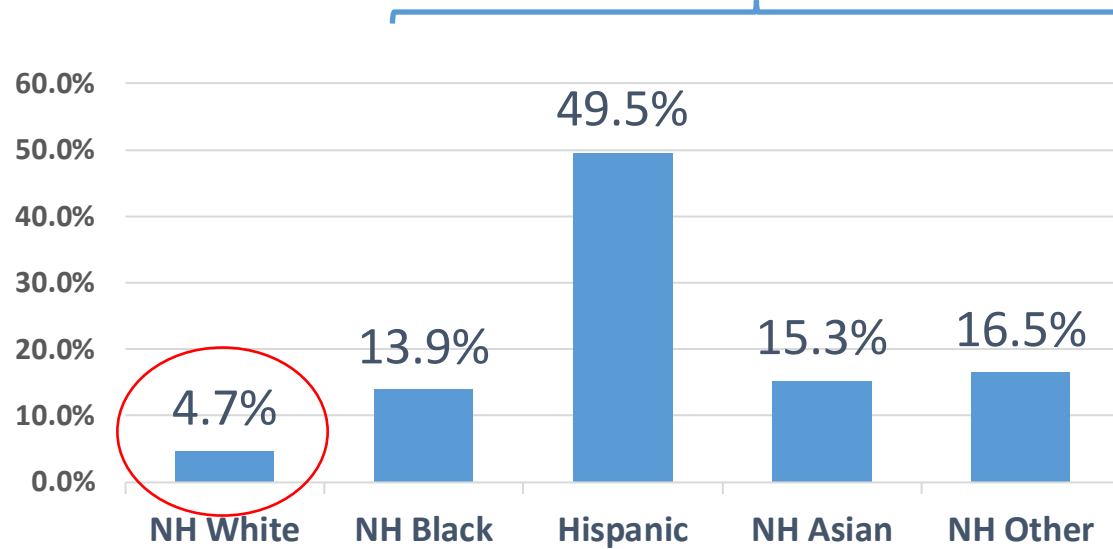
## Texas Birth Rates, 2007-2019





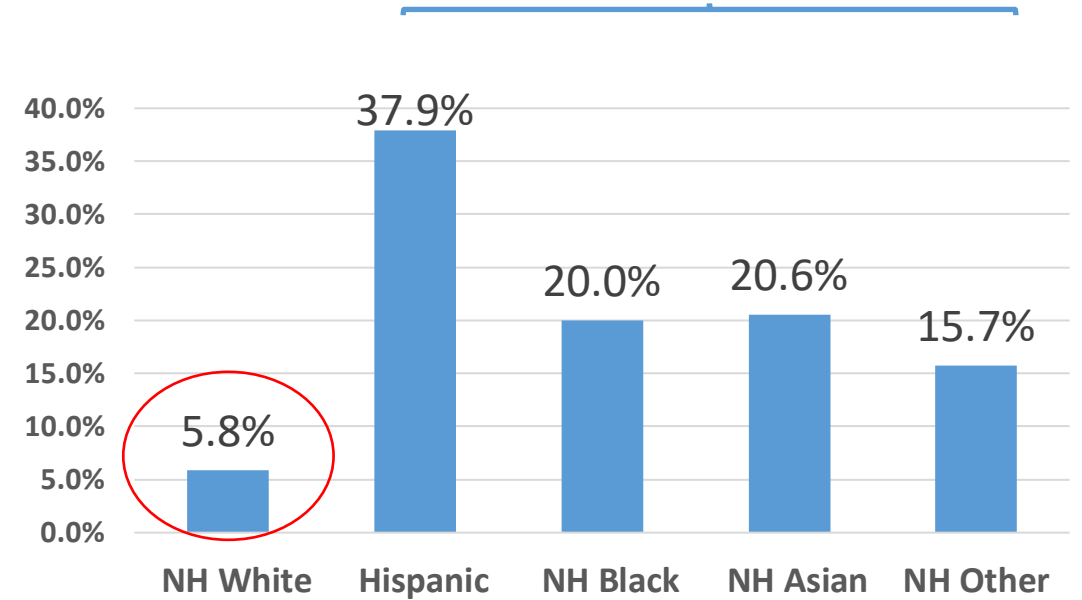
## Racial/Ethnic Contributions to Population Growth, 2010-2020

**3,999,944 new Texans**  
**95.3% attributable to growth of population of color**



Texas

**1,281,976 added Population to the DFW Area**  
**94.2% attributable to growth of minority populations**

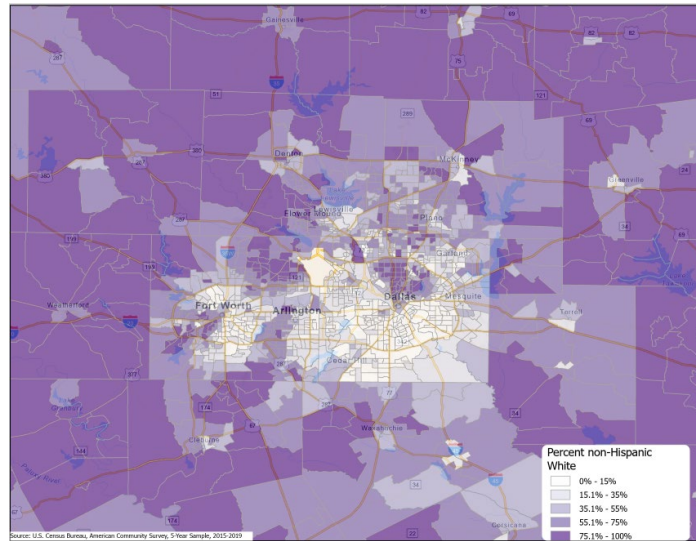


DFW Area

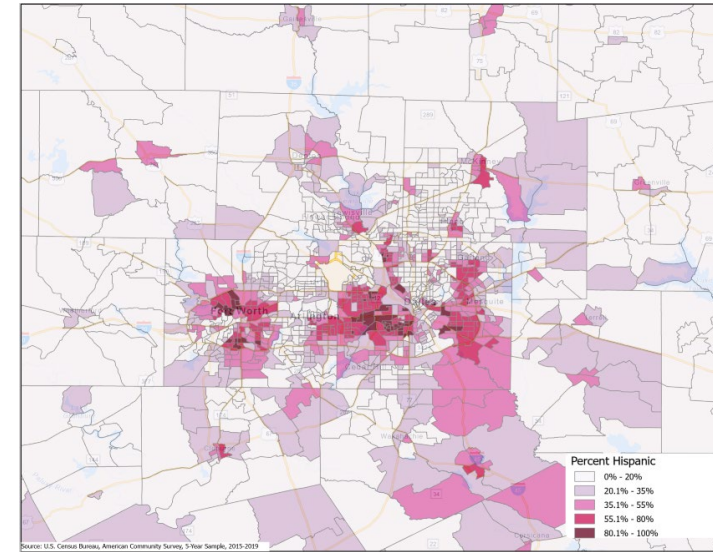


# Percent of Population by Race/Ethnicity, Metroplex area, census tracts, 2015-2019

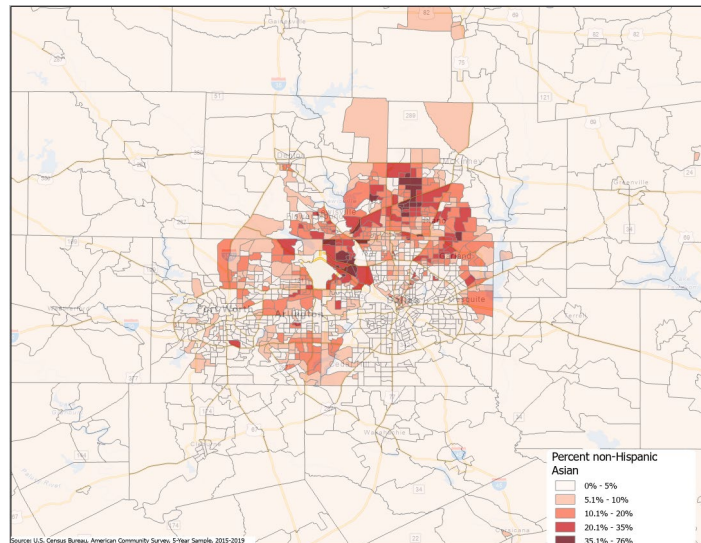
NH White



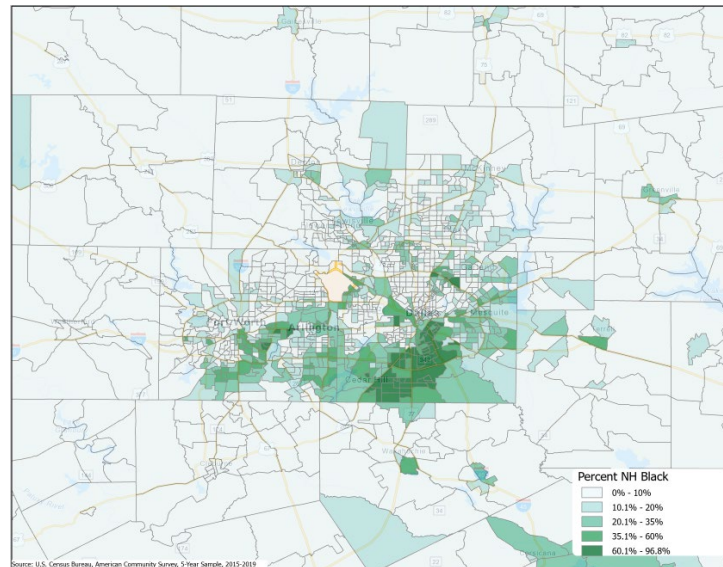
Hispanics



NH Asian



NH Black

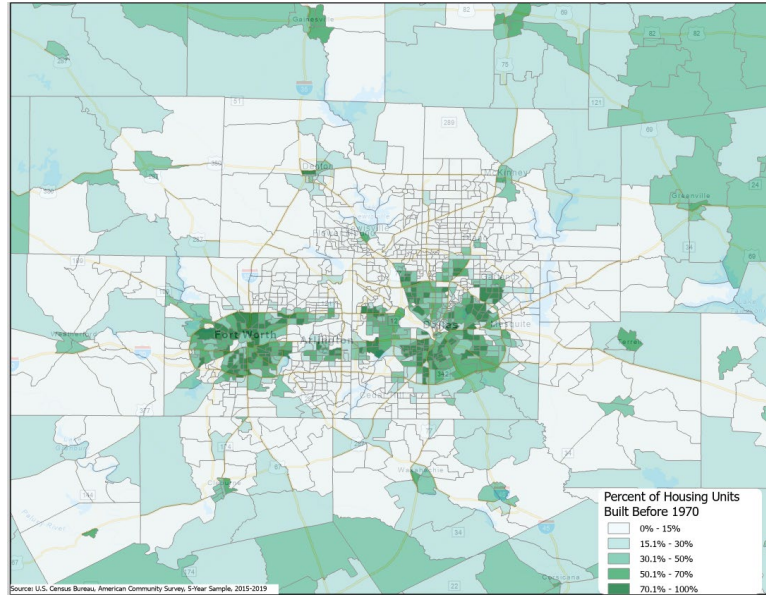




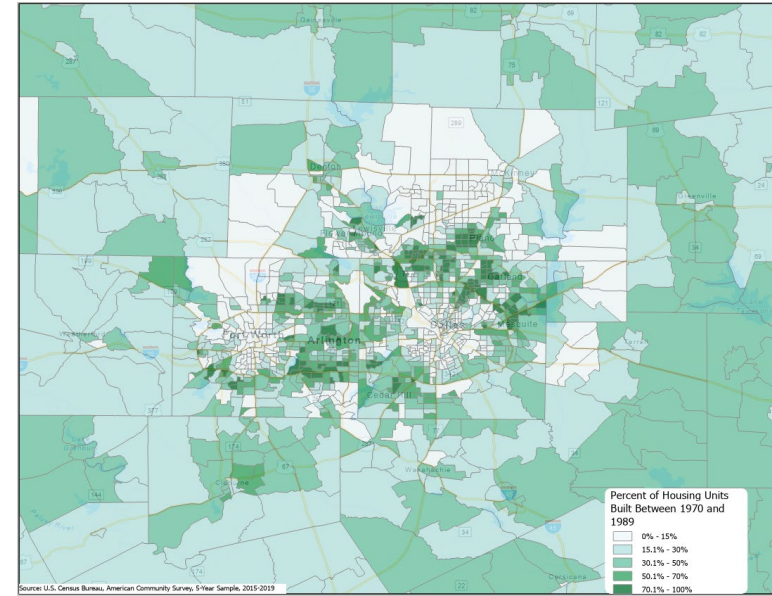


# Percent of housing stock by year built, Metroplex area, census tracts, , 2015-2019

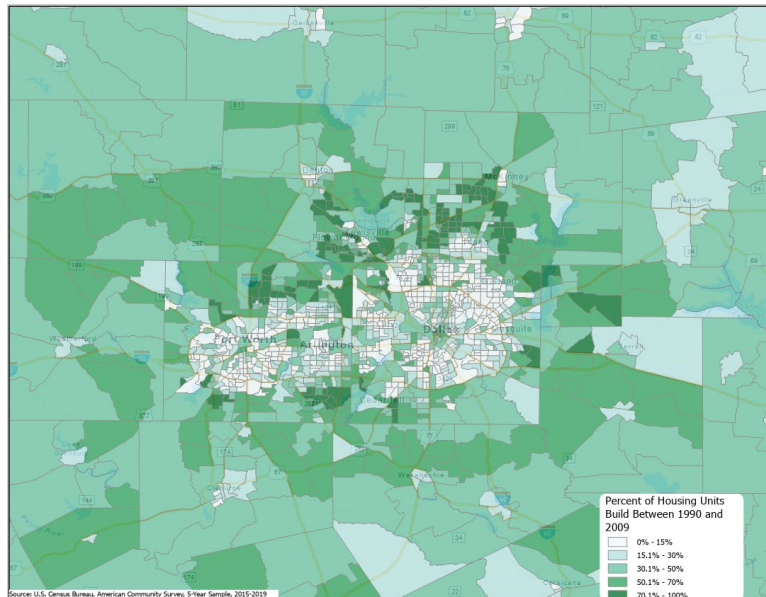
Before 1970



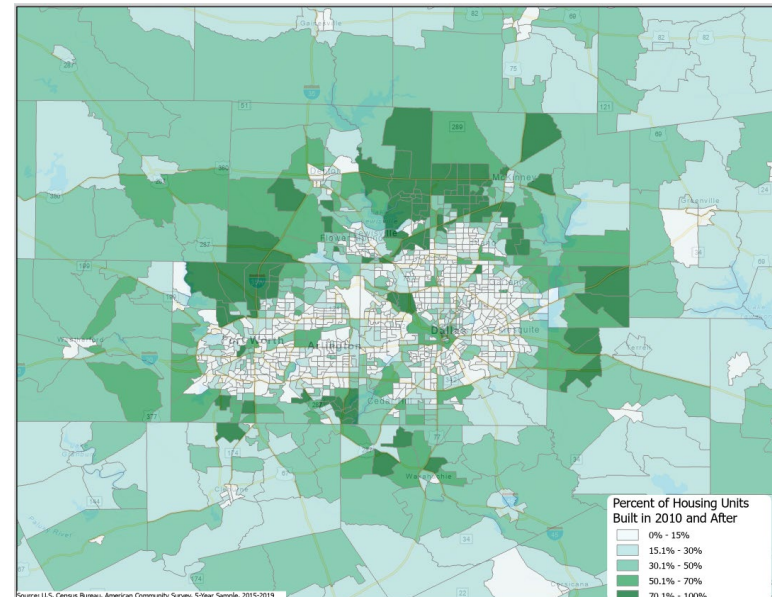
1970-1989



1990-2009



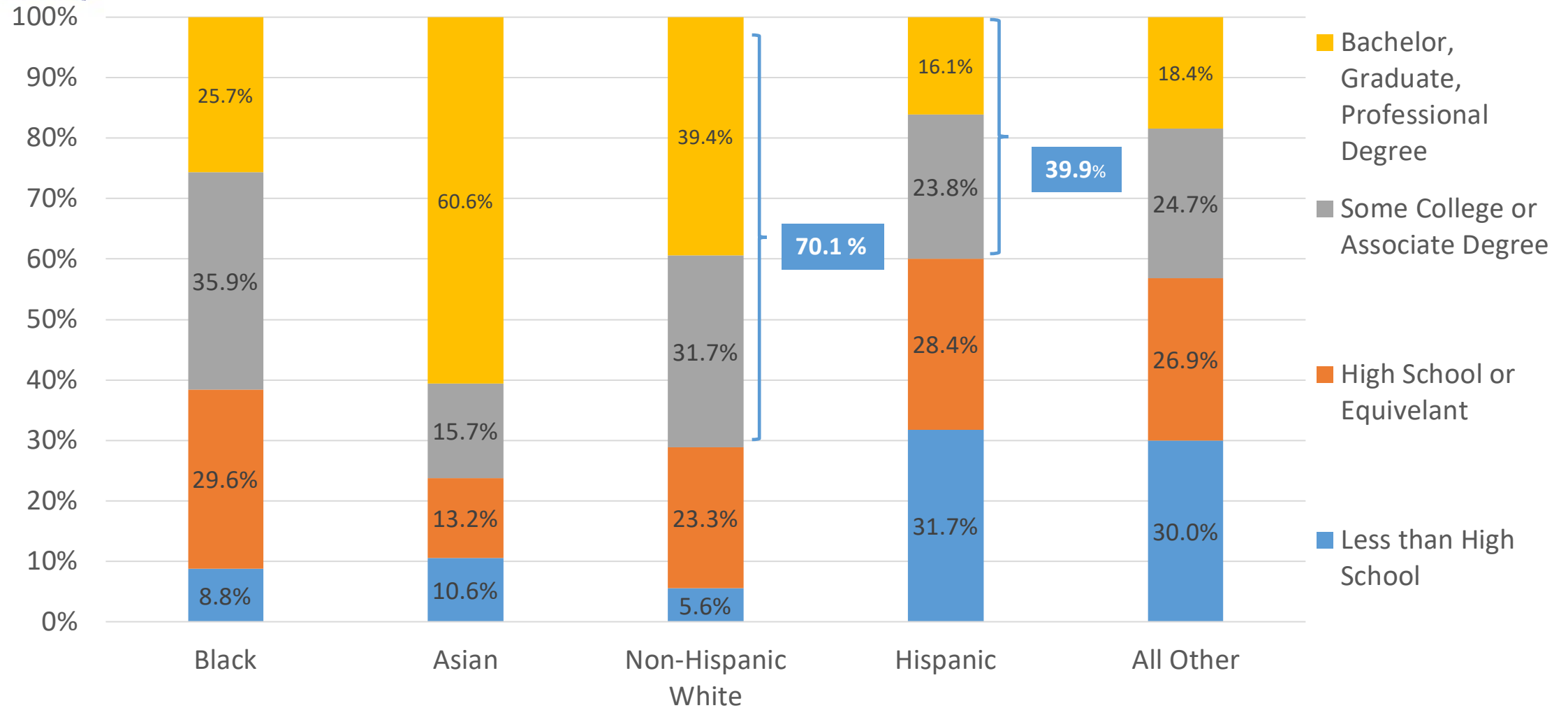
2010 and later



SOURCE: US Census Bureau, 2019 5-Year American Community Survey Summary File

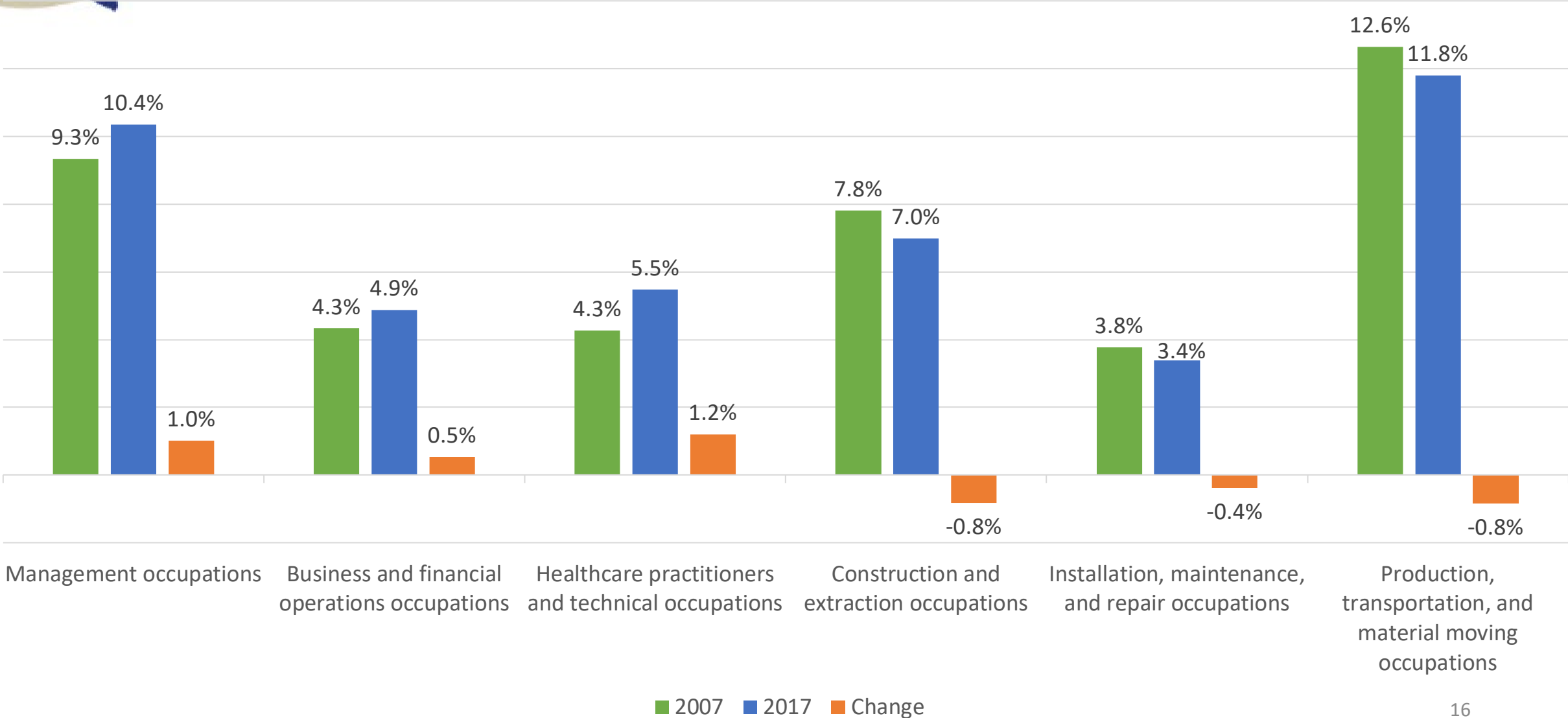


## Educational Attainment of Persons Age 25 Years and Older by Race/Ethnicity, Texas, 2019





# Percent of Civilian Labor Force by Occupation, Texas, 2007, 2017 and 2017-2017 Change

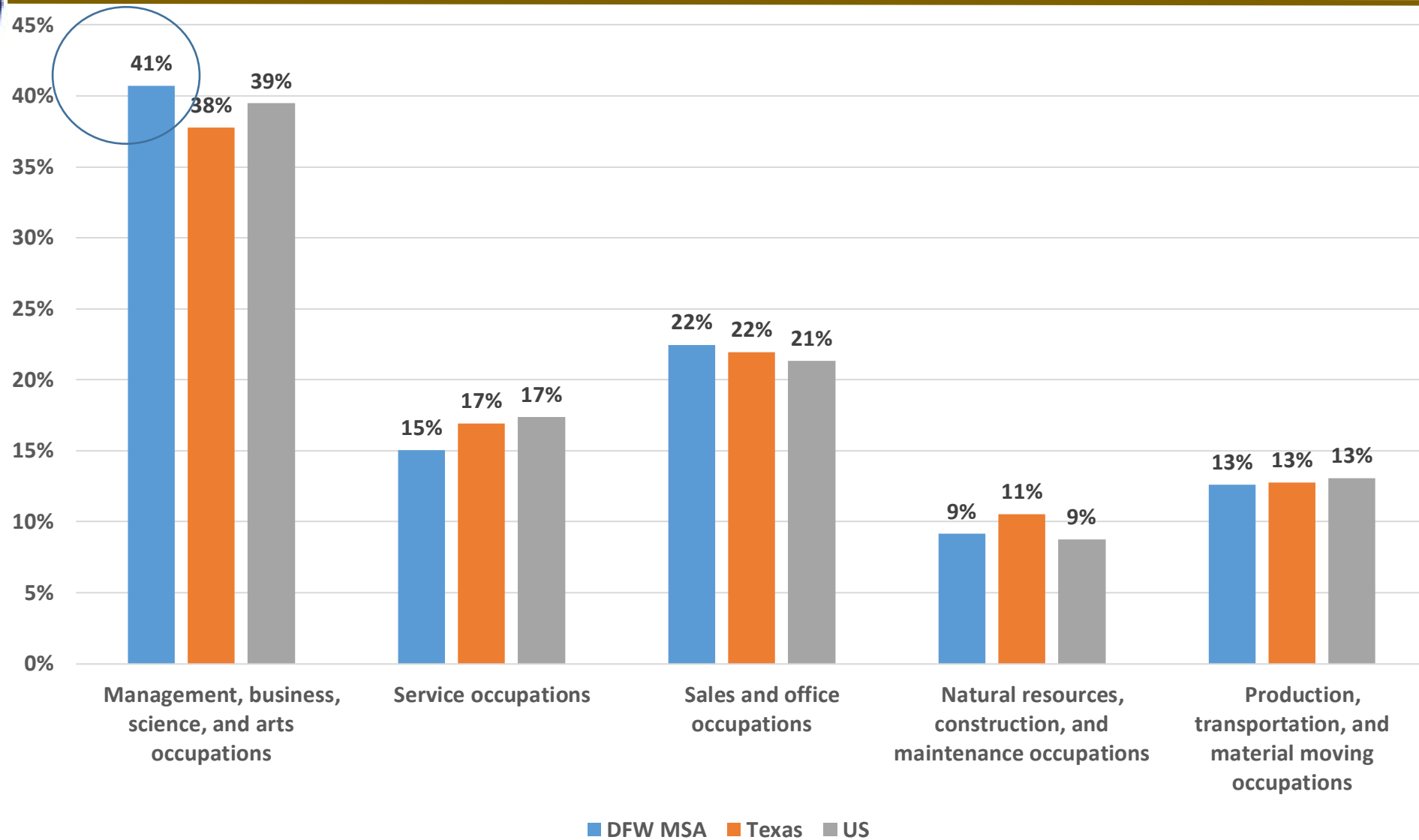


Source: US Census Bureau, American Community Survey, 1-Year Sample, 2007, 2017



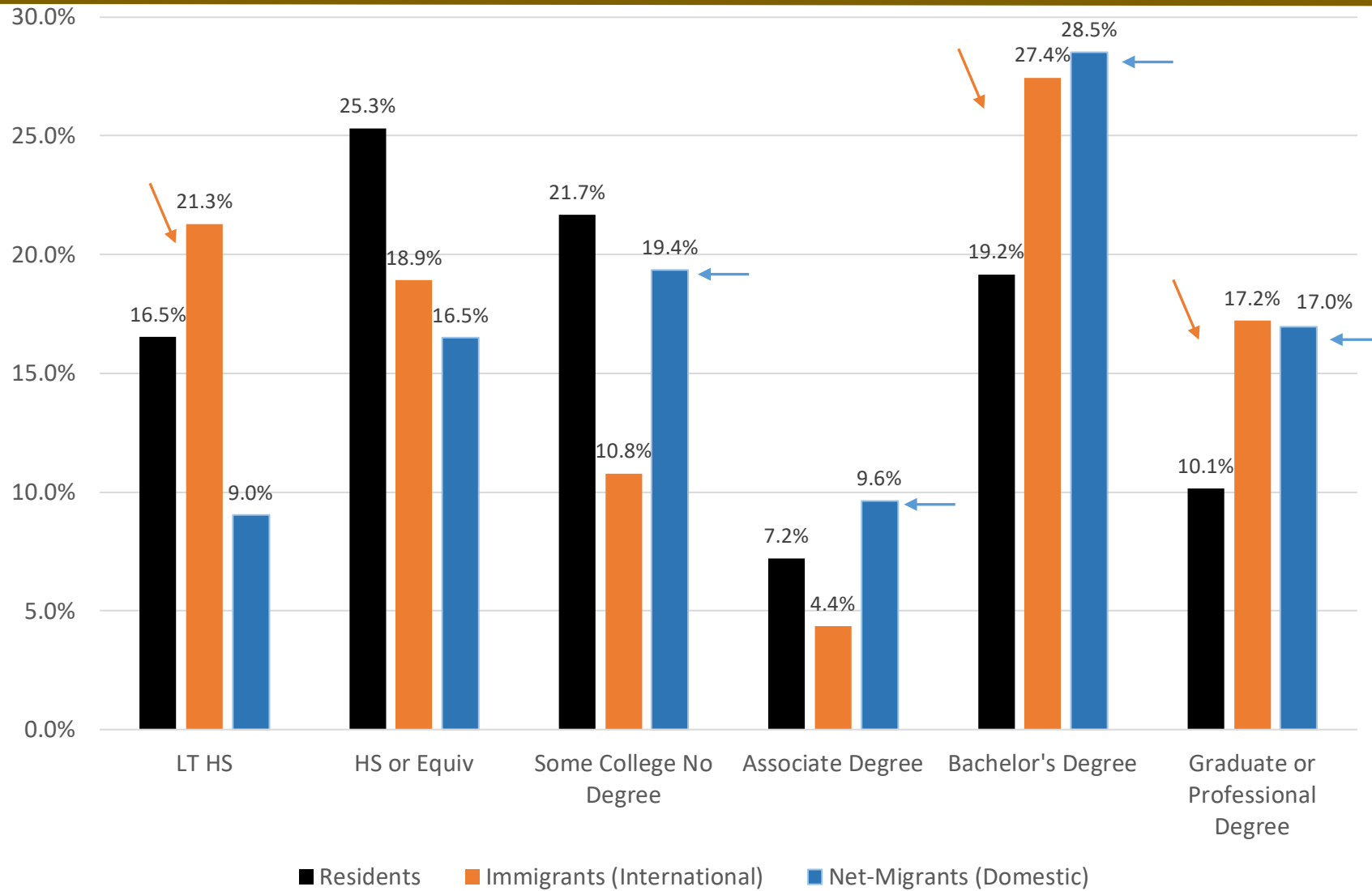


## Occupations for the Civilian Employed Population 16 Years and Older DFW, Texas and the US, 2016-2020



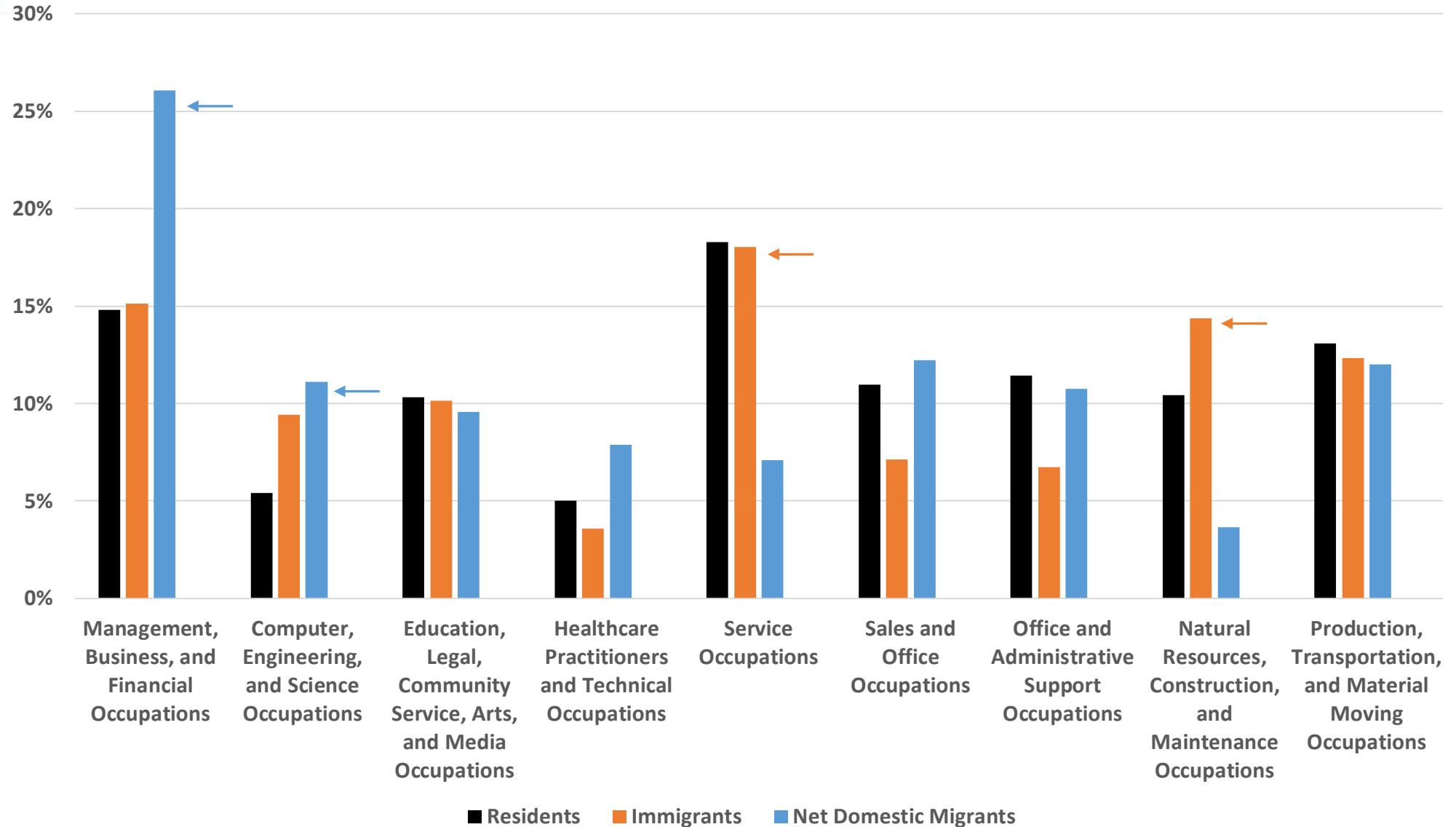


## Percent Distribution by Education Attainment of Texas Residents (Non-Migrants), Immigrants (international) and Net-Migrants (domestic) Aged 25 Years and Over, Texas, 2015-2019



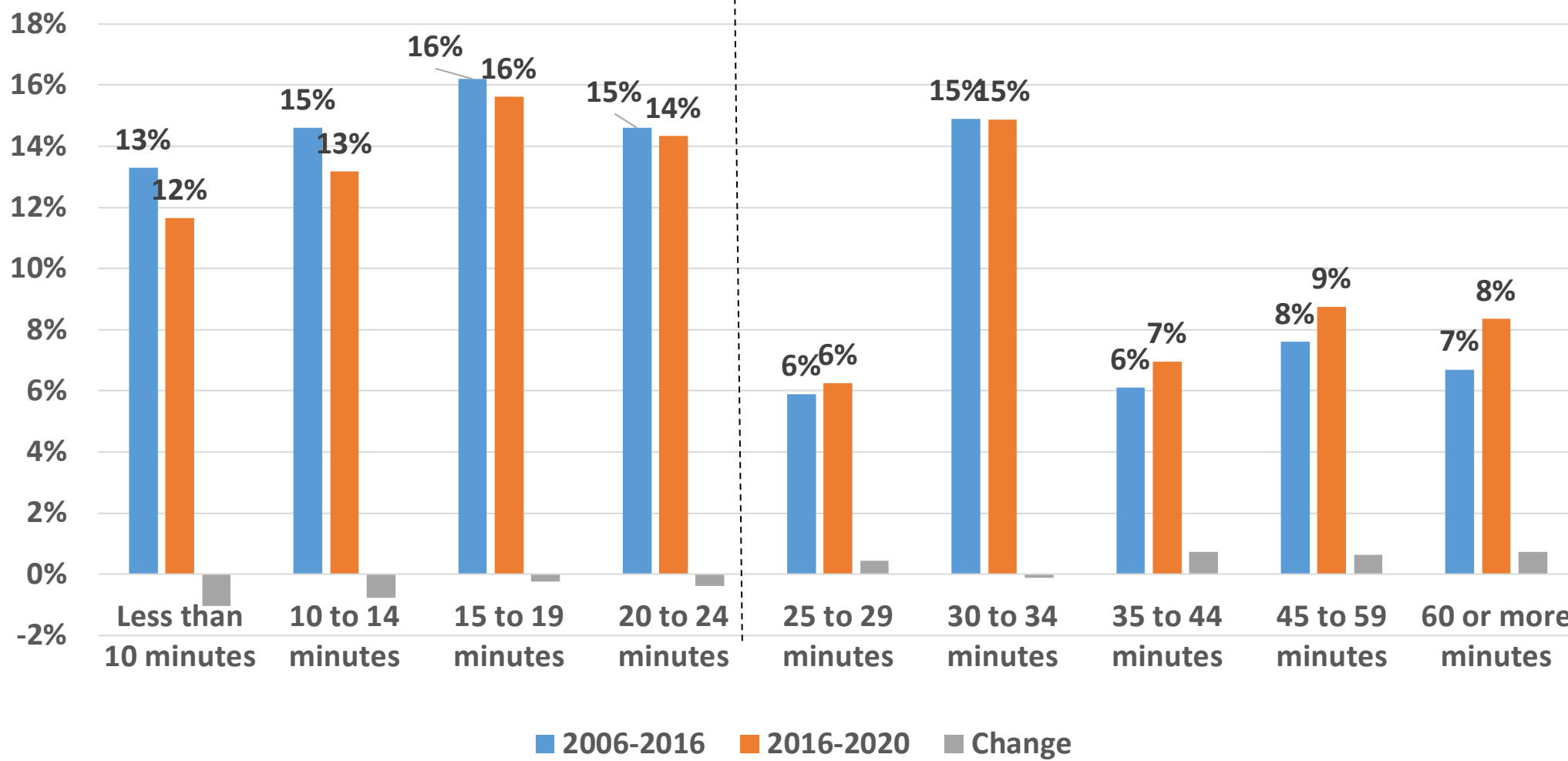


# Percent Distribution by Occupation of Non-Migrants (Texans) and Net-In Domestic Migrants Aged 25 Years and Over, Texas, 2006-2019





## Change in Travel Time to Work, Texas, 2006-2010 and 2016-2020



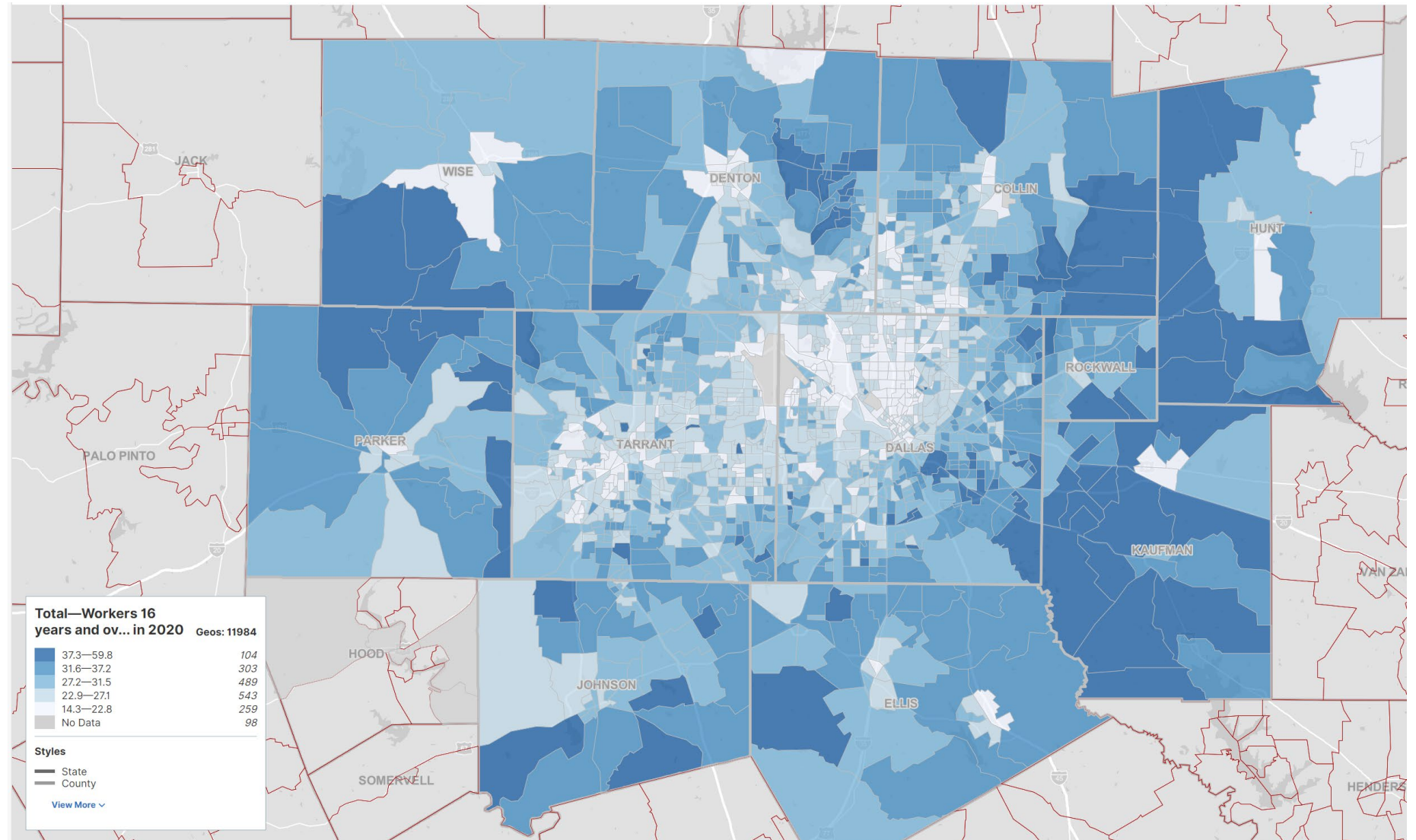


## Mean Travel Time to Work (minutes), Metroplex area, Census Tracts, 2016-2020

Nation: 26.9

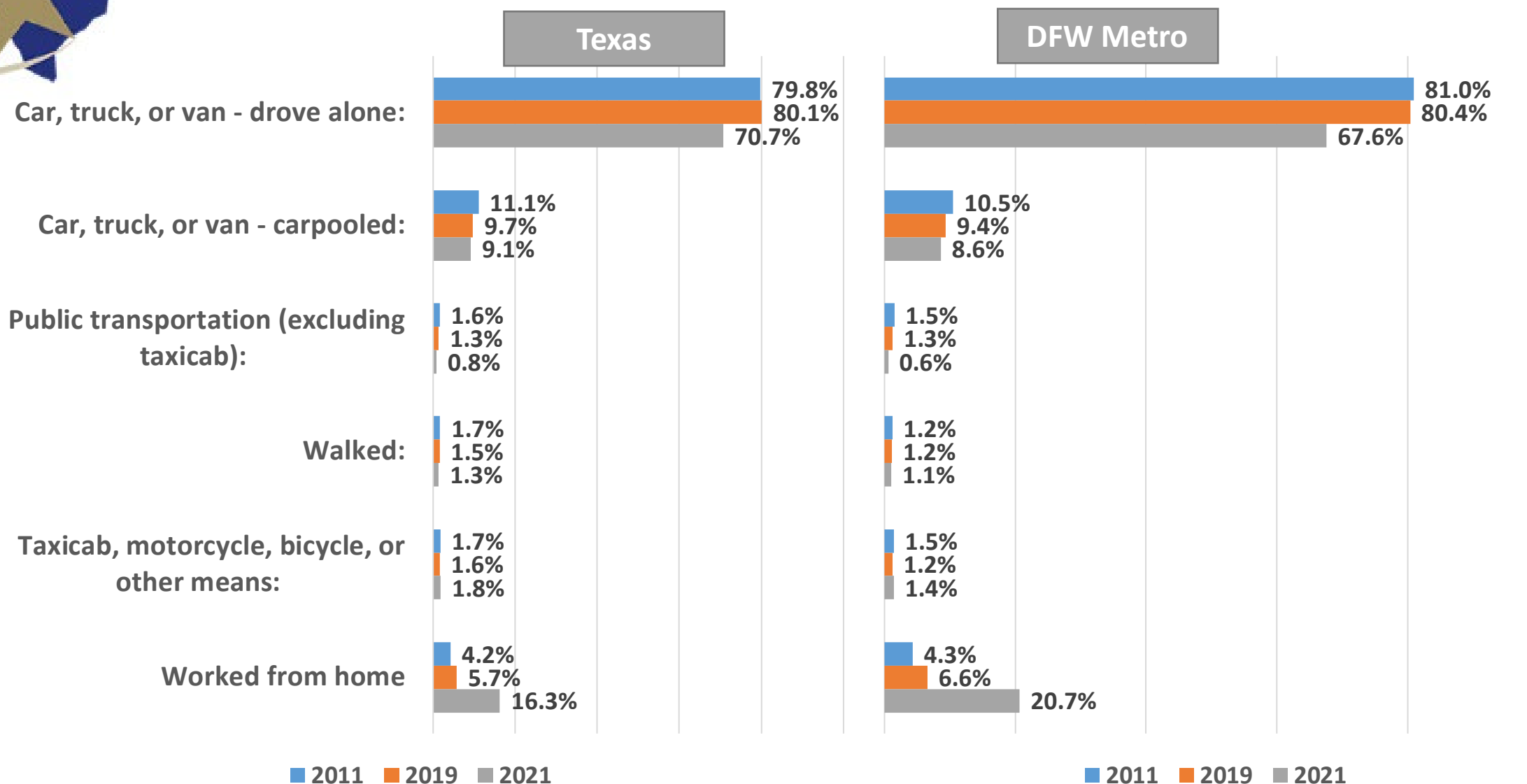
Texas: 26.6

DFW MSA: 28.4



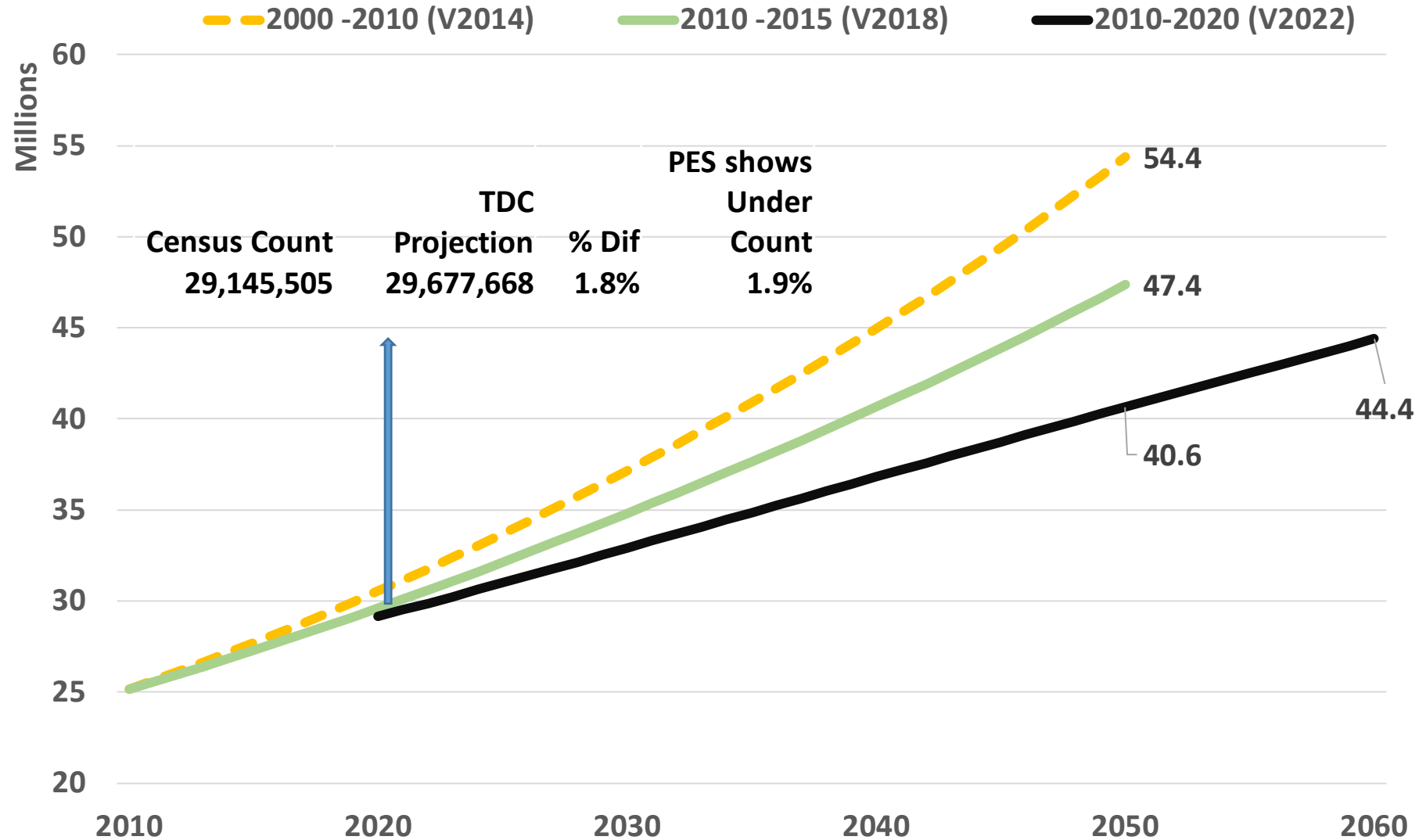


## Means of Transportation, 2011, 2019, 2021



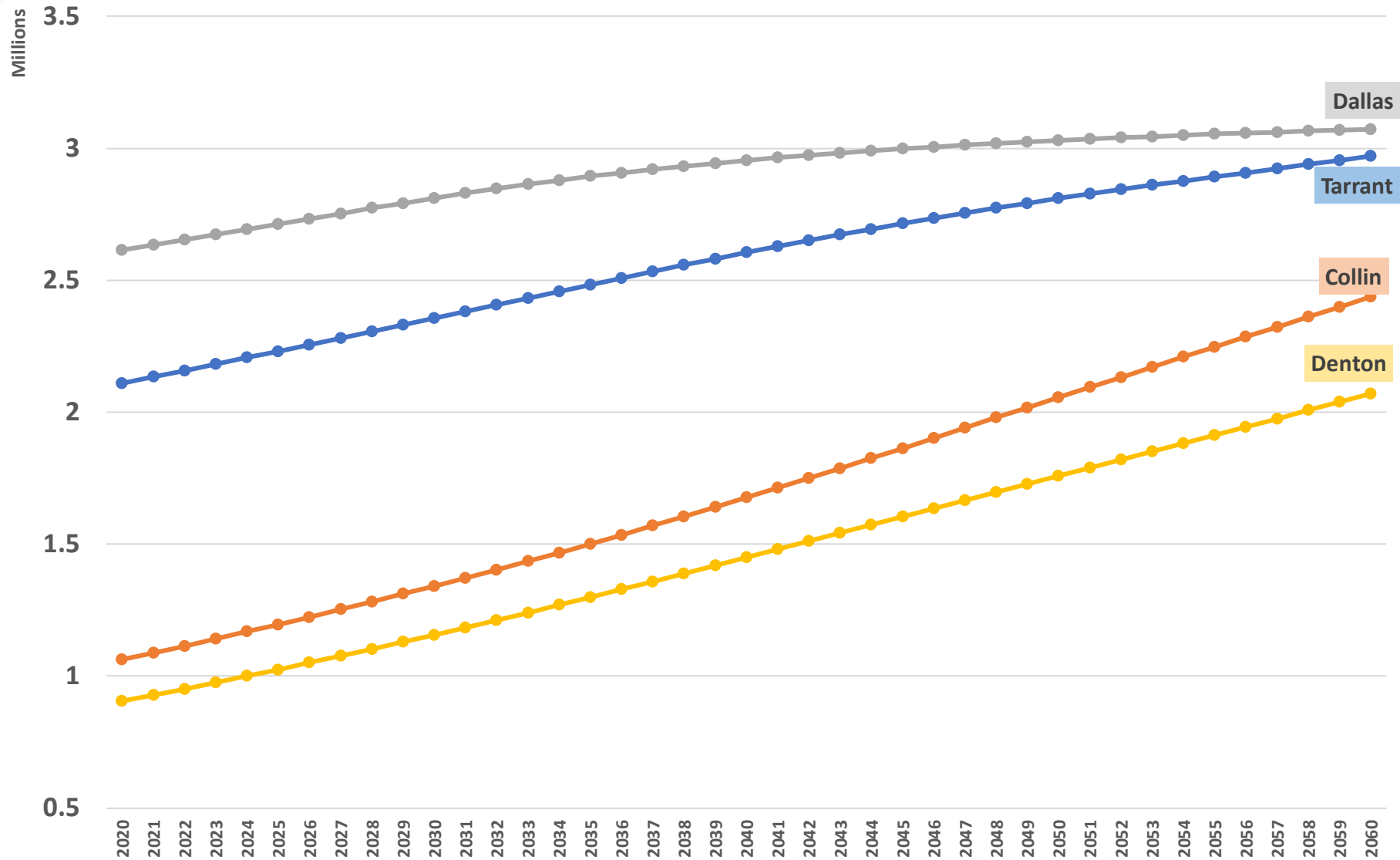


# Projected Population Growth in Texas with Various Migration Scenarios





## Population Projections, DFW Metro Largest Counties, 2020-2060







## Population Growth in the New Decade, North Texas Counties

	2010-2020 Migration Scenario				Half of 2010-2020 Migration Scenario			
	2020	2030	Numeric Change	Percent Change	2020	2030	Numeric Change	Percent Change
Dallas	2,613,539	2,811,320	197,781	8%	2,613,539	2,790,940	177,401	7%
Tarrant	2,110,640	2,356,541	245,901	12%	2,110,640	2,281,675	171,035	8%
Collin	1,064,465	1,341,877	277,412	26%	1,064,465	1,213,030	148,565	14%
Denton	906,422	1,156,452	250,030	28%	906,422	1,047,144	140,722	16%
Ellis	192,455	234,017	41,562	22%	192,455	215,095	22,640	12%
Johnson	179,927	205,405	25,478	14%	179,927	194,081	14,154	8%
Kaufman	145,310	193,144	47,834	33%	145,310	170,145	24,835	17%
Rockwall	107,819	137,756	29,937	28%	107,819	122,693	14,874	14%



## To Conclude

---

### ❖ Major demographic trends

- ☐ Continued growth despite the pandemic
- ☐ Increasingly driven by migration
- ☐ Race/ethnic diversity
- ☐ Aging

### ❖ Implications for

- ☐ Education
- ☐ Labor force
- ☐ Housing and where people live
- ☐ Transportation

### ❖ Future Growth

- ☐ Slow-down of natural increase
- ☐ Domestic migration – slow-down of the US growth
- ☐ Immigration?

### ***Food for thought***

- ② How to attract talents and improve education to build a strong labor force
- ② How to cater to the needs of an increasingly diverse population



# <https://demographics.texas.gov/>

https://demographics.texas.gov/Data/Decennial/2020/#redistricting-tile

## P.L. 94-171 Redistricting Data Summary

Public Law (P.L.) 94-171, enacted by Congress in December 1975, requires the Census Bureau to provide states the opportunity to identify the small area geography for which they need data in order to conduct legislative redistricting. The law also requires the U.S. Census Bureau to furnish tabulations of population to each state, including for those small areas the states have identified, within one year of Census day.

United States<sup>®</sup>  
**Census 2020** U.S. Census

### Quick Links

- Legacy Format Summary Files
- Technical Documentation - State
- Technical Documentation - National
- Data Maps (pdf format)
- more...

TEXAS<sup>®</sup> DEMOGRAPHIC CENTER Tx Demographic Center

### Texas Area Data Files

#### Total Population, Housing Unit, and Group Quarter Data by Area

Select File

#### Voting Population Data by Area

Select File

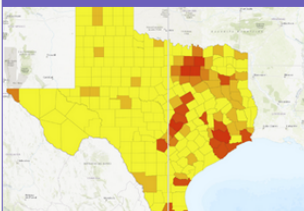
## Visualizations

### Interactive Data Tool



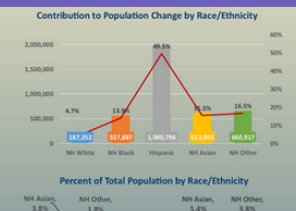
Redistricting Data for Texas  
Places, 2000-2020

### Interactive Map



Redistricting Data for Texas,  
2010-2020 Swipe Maps

### Infographic



Who Contributed to Texas'  
Population Growth?  
2010-2020

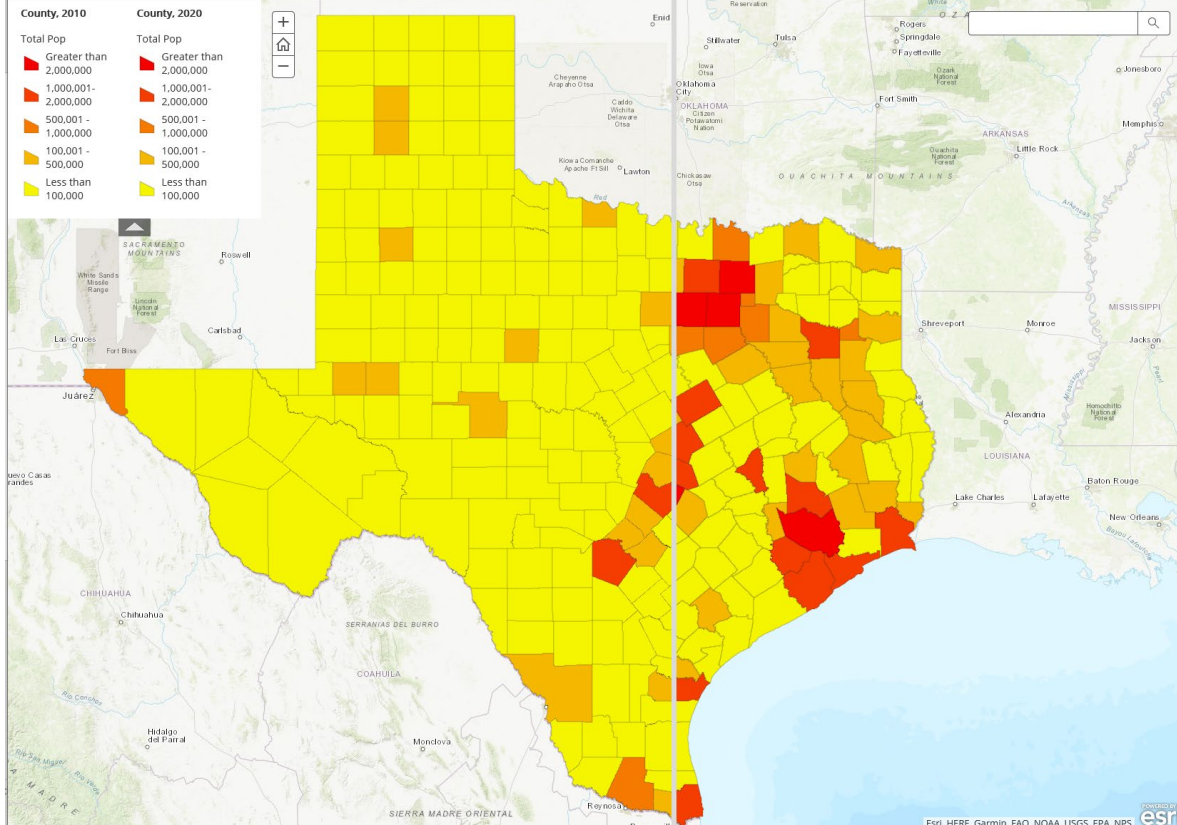
## Redistricting Data for Texas, 2010-2020

Source: U.S. Census Bureau, Decennial Census P.L. 94-171 Redistricting Data.  
Note: Swipe from left to right to highlight changes in population from 2010-2020.  
Zoom in to see county, tract, block group and block level data. Click on the map to learn more.

Total Population Percent Hispanic Percent NH Black Percent NH White Percent NH Asian Percent NH Other Race

### Total Population, 2010-2020

Texas Counties, Census Tracts, Block Groups and Blocks



Texas Demographic Center

TEXAS<sup>®</sup> DEMOGRAPHIC CENTER

Esri, HERE, Garmin, FAO, NOAA, USGS, EPA, NPS



---

# Helen You, Ph.D.



(210) 458-6530



TDC@UTSA.edu



Demographics.Texas.gov



@TexasDemography